

**12' Steel Flat Bed**  
**On Self-Contained Hoist**  
**w/Sides & Tailgate**  
**(610) 932-8382**

**Huntingdon Equipment**

Rentals  
 Available

**GOOD  
 USED EQUIPMENT**

Huntingdon Valley, PA • 215-672-9667 • 1-800-543-3833 • Eddie

**LOST OUR LEASE - EVERYTHING MUST GO!**



**Vermeer M-470 Trencher with backhoe**  
 This is one of six units we have all ready to work Starting at \$4,500.



**Flat Bed - Diesel 8 2 - 5 speed auto with 2 speed rear** GVW - 26,000



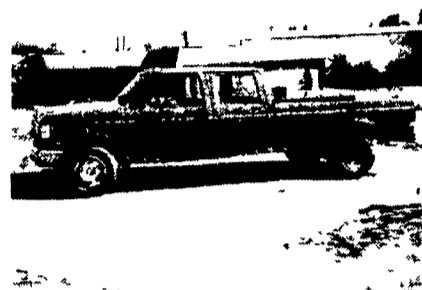
**1986 Chevy 5 Man Cab Dump, 3208 Cat - 5/2, Air Brakes** Dump with Lift Gate Dump 14 Long, GVW 34 000 pounds



**Material Handler Bucket Truck - 42** Bucket with Jib 1981 and 1982 Diesel Engine - Auto or Stick - Special \$9,995



**Stake Body Boom Truck 45 Height** 14 000 lbs cap 1985 GMC - Gas - 5 Speed - 2 Speed Rear

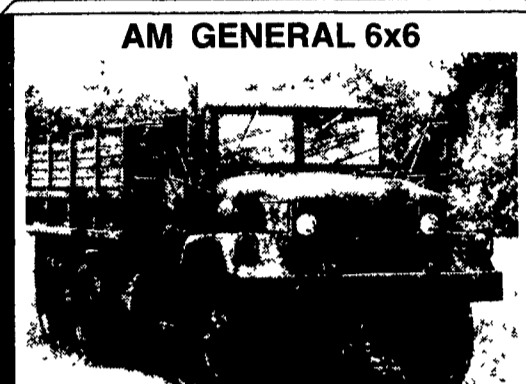


**One of Two 1987 Ford F 350** 460 Eng 4 spd great for pulling trailers

**DIGGER DERRICKS/AERIAL BUCKETS/UTILITY EQUIPMENT**



**1985 GMC Top Kick 7000**  
 GVWR 51240, A/C, Air Brakes, Reman Cat Motor, 3208T, 250 HP, Reman RT 610 Trans. 1C Spd., 5,000 Miles on motor & trans, 2 - 1000 Gal Tanks, 1 - 500 Gal. Tank, Meter and Hose Reel Excellent Condition  
**1-800-929-2676**



**AM GENERAL 6x6**  
 In-Line 6-Cylinder Cummins, with Turbo. 5 Speed with Hi and Lo Transfer case. 900/20, Tires. Air Brakes. Locking differentials. Cargo body. A must for every farmer or off road work. Some with new engines and transmissions.  
 Priced from \$2,900 to \$10,500.  
 All Road Ready EXCELLENT CONDITION.  
 Call St. Marys, PA.  
 (814) 834-1018

**IT JUST MIGHT SAVE MORE THAN YOUR TIME**



**W4 & W5 MODELS IN STOCK FOR IMMEDIATE DELIVERY**

**ALL WITH: 3 MAN SEATING, ROOMY CABS, UNMATCHED VISIBILITY AND MANUEVERABILITY!**



**W4 FORWARDS IN STOCK!**

#60047, 1998 W45042, 14,250 GVW, 132" WHEELBASE, DIESEL, AUTOMATIC, A/C, WITH 14' VAN BODY

#60051, 1998 W45042, 14,250 GVW, 132" WHEELBASE, DIESEL, AUTOMATIC, A/C, NO BODY

**W5 FORWARDS IN STOCK!**

#58596, 1997 LEFT-OVER W5R042, A/C, 19,500 GVW, 200HP V6 DIESEL, 6 SPEED, 148" WHEELBASE, NO BODY

**GET MORE TRUCK FOR YOUR BUCK TODAY!**

**VISIT OUR WEBSITE AT...www.bergeys.com**

**Bergey's**  
 TRUCK EXCELLENCE SINCE 1924

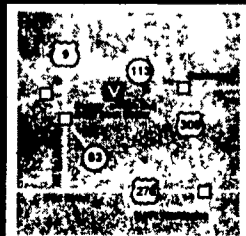


**FREE CALL (877) 237-4393**

**24 HOUR PARTS & SERVICE MON TO FRI**

SHOWROOM HOURS: M-F 9-9 Sat 9-4 • CLOSED SUNDAY

**RT. 113 • SOUDERTON (2.5 Miles N. of Harleysville Wal-Mart & Rt. 63) (3 Miles South from the Rt. 113 from the Souderton Exit of Rt. 309)**



**Best Buys in Used Equipment**  
**Used Trailers**

- 1) **UM 3473** - General 9 Dow Tri-Axle 16' Deck, Tag-Along
- 2) **UM 3656** - Southeast Skidloader Trailer with New Axles & Wheels & Tires
- 3) **UM 3712** - McElrath 16' Grain Trailer with Hay Gate on Rear, Platform Over Deck for Hay Vac - Hyd Brakes, 20,000 GVW, Used Very Little, Like New, **\$14,000**
- 4) **NE 4738** - Demonstrator Eager Beaver 35 Ton Detachable 35 SLGS Trailer Air Ride with Broomwell, Wet Line and Side Channel, Reinforced from Factory - **\$30,958.**

**Gooseneck Trailer**



Tandem Axle, 16' Deck with 3' Beaver Tail, 10,000 GVW  
**Ask For Dean**

**9 Ton Eager Beaver Trailer**



**UM 3823**  
 3 Axle with 16' Deck and 42" Beaver Tail - **\$2,600**  
**Ask For Dean**

**1989 Model 10,000 GVW Trailer**



**UM 3824**  
 Tandem Axle Lamco with G78-15 Tires, 16 Foot Deck Plus 3 Foot Beaver Tail  
**Ask For Dean**  
 Worth The Price! **\$2,600**

**Eager Beaver 10 AP Skid Steer Trailer**



10,000 GVW Tandem Axle with 14' Deck and 2' Beaver Tail Lower Clearance Easy Load

**Used Truck Bodies**

- 1) **UM 3786** 22' Flat Bed, Wood Floor, **\$600 Ask For Dean**

**BINKLEY & HURST BROS., INC.**  
 (717) 625-4705

133 Rothsville Station Rd P.O. Box 0386, LEBANON, PA 17043-0386 Located 1/2 Mile North of Rothsville  
 1-800-414-4705 Fax 717-625-0996

