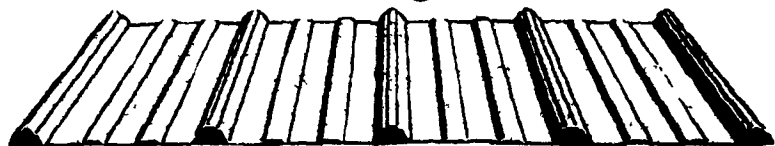


Country Best



Centurydrain® roofing and siding from Wheeling Corrugating: slick looking, tough, economical.

- High tensile galvanized steel for strength, durability.
- Drain channel and tight laps for snug, dry interiors.
- Wide selection of bright, baked-on contemporary colors.

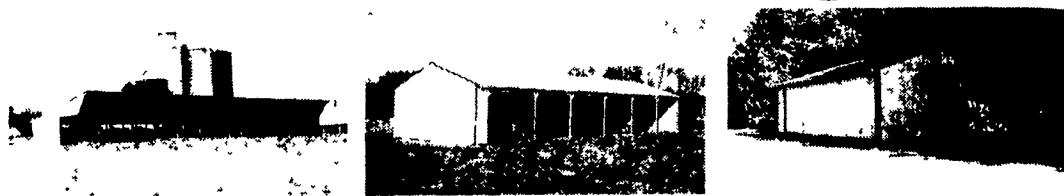


MARTIN'S ROOFING

CALL FOR DISCOUNTS!
(717) 532-3460

258 Walnut Bottom Rd.,
Shippensburg, PA 17257
Rt. 81, Exit 10

POLE Buildings



- Agricultural • Residential • Commercial
Livestock Facilities • Storage Building •
• Garages • Equipment Sheds
• Metal Siding & Roofing



CONSTRUCTION

2459 Noble Rd., Kirkwood, PA 17536

• Free Estimates

Jerri Rohrer
717-529-0936
Fax 717-786-7872

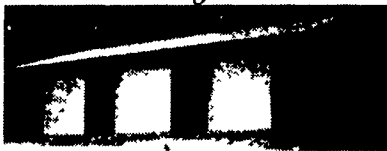
S.M.S BUILDERS

762 Maple Grove Road • New Holland, PA 17557
717-354-8755

Riding Arenas



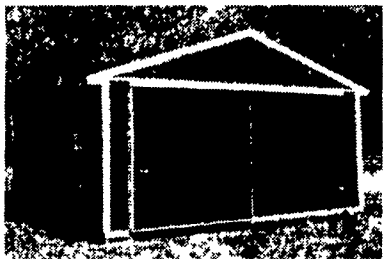
Storage Sheds



Call For Free Estimates
Financing Available

We Build The Size For Your Needs

Horse Barns



Stall Kits



POLE BUILDINGS

CUSTOM DESIGNED & ENGINEERED

- COMMERCIAL AGRICULTURAL RESIDENTIAL
HORSE BARN • ARENAS • GARAGES
IMPLEMENT SHEDS



BYLER
CONSTRUCTION
Delbert Auker
RR 1 Box 514A
Womelsdorf, PA 19567

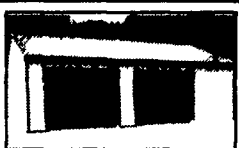
— FREE ESTIMATES —
610-589-2683
FAX (610) 589-1492

Pole Barn Specials



20x24x8 Garage
\$4,700.00

- (1) 3'0"x6'8" steel entry door
- (1) 16'x7' insulated raised panel overhead door
- Choice of colors on roof, sides and trim
- Fully erected



24x40x10 Garage
\$7,700.00

- (1) 3'0"x6'8" steel entry door
- (2) 9'x8' insulated raised panel overhead door
- Choice of colors on roof, sides and trim
- Fully erected



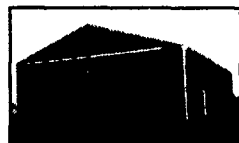
30x40x10
\$7,800.00

- (1) 3'0"x6'8" steel entry door
- (1) 10'x10' sliding door
- Choice of colors on sides and trim, plain galvalume roof
- Fully erected



40x80x14
\$20,500.00

- (1) 3'0"x6'8" steel entry door
- (2) 20'x14' split sliding doors
- Choice of colors on sides and trim, plain galvalume roof
- Glu-laminated posts
- Fully erected



60x150x16
\$48,000.00

- (1) 3'0"x6'8" steel entry door
- (2) 20'x16' split sliding doors
- Choice of colors on sides and trim, plain galvalume roof
- Glu-laminated posts
- Fully erected

- * Residential, Agricultural, Commercial, Horse Barns & Riding Arena
- * Many Styles & Sizes Available
- * Erected or Build Your Own
- * Financing Available
- * Free Estimates & Brochures

CALL US TODAY

Conestoga Buildings Inc.
1-800-544-9464 717-354-2613



" Americas Favorite Fastener Supplier "

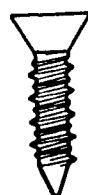
Call Toll Free 1-800-704-8112



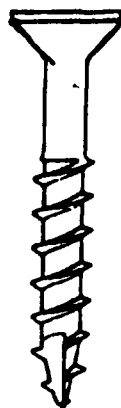
Our Free Catalog Offers Discount Fasteners for Farmers, Builders or Furniture Manufacturers

Over 20,000 Items in Stock

We Sell Grade 2,5, & 8 Bolts & Nuts Carriage Bolts, Lag Screws, Washers



Stainless Deck and Furniture Screws Drywall Screws- Tapcons- Anchor Bolts Roofing Nails - Nail Guns-Shrink Wrap



If You use Fasteners- call us for free Catalog. Dial 1-800-704-8112