



VIRGINIA CATTLE & HOGS

Virginia Feeder Sales
Richmond, VA
Wed June 17, 1998

USDA-VA Dept of Ag Market News
Summary of Livestock Auctions by Areas: Northern Virginia Livestock Summary Including Front Royal, Rockingham, Shenandoah, Staunton Union and Winchester Virgi?week of June 8-13, 1998
Feeder Cattle 715 Head

Steers Med&Lge 1 Med&Lge 2 200-300 75.00 - 84.00 - 300-400 79.00 - 95.50 80.00 - 82.00 400-500 76.00 - 93.00 70.00 500-600 76.00 - 90.00 69.00 600-700 75.00 - 79.50 -

Holstein Steer Med&Lge 2 200-300 67.00 - 70.00 300-500 64.00 - 71.50 700-900 58.25

Heifers Med&Lge 1 Small 1 Med&Lge 2 300-400 67.00 - 80.00 - 70.00 - 81.00 400-500 68.00 - 82.00 65.00 65.00 - 73.00 500-600 65.50 - 75.00 ? 65.00 - 70.50 600-700 63.00 - 71.00 - 58.50 - 70.00 700-800 64.50 - -

Bulls 1 Small 1 Med&Lge 2 200-300 85.00 - - 300-400 75.00 - 85.00 - 77.00 - 80.00 Few 96.00 - - 400-500 78.00 - 94.50 74.00 - 500-600 69.00 - 88.00 - 75.00 600-700 62.00 - 71.00 - 54.00 700-900 45.75 - 59.50 - -

Slaughter Cattle 300 Head
Slaughter Cows 254 Head Breaking Utility and Commercial 2-4 35.00 - 43.75 Cutter and Boning Utility 1-3 33.00 - 42.00

Canner and Low Cutter 1-2 30.00 - 36.50
Slaughter Bulls 46 Head Yg 1-2 900-1300 lbs 45.00 - 58.00 Yg 1-2 1300-1600 lbs 42.50 - 51.75 Yg 1-2 1600 lbs and ov? - 51.75

Baby calves returned to farms 62 head newborn to 4 weeks 15.00-85.00 per head. Over 100 lbs 50.00-70.00 per cwt.

Lambs Total Receipts 282 Head Slaughter Lambs 141 He? New Crop Choice Few Prime 1-2 Few 3 99-105 lbs 82.00 - 84.00 Good and Few Choi?-89 lbs 83.50 - 85.00 Feeder Lambs 84 Head Medium and Large Frame ? lbs 81.00 - 89.00 Medium and Lar? 60-70 lbs 86.00 Slaughter Ewes and Rams 57 Head Ewes Choice 2-4 18.50 - 38.00 Utility and Good 1-3 21.25 - 33.00 Cull and Low Utility 1-2 26.00

Richmond, VA
Wed June 17, 1998

USDA-VA Dept of Ag Market News
Summary of Livestock Auctions by Areas: Southwest Virginia Livestock Summary Including Hollins, Tri-state and Wytheville Virginia for the week of June 8-13, 1998

Feeder Cattle 506 Head
Steers Med&Lge 1 Med&Lge 2 200-300 91.00 - 112.00 - 300-400 80.00 - 88.00 - 400-500 80.00 - 88.00 76.00 - 83.00 500-600 76.00 - 88.00 70.50 - 71.00 600-700 73.50 - 78.00 - 700-800 60.00 - 67.50 68.00 - 69.00 800-900-66.00 -
Holstein Steer Med&Lge 2 200-300 66.00 300-500 66.00 - 73.00 500-700

59.00 - 69.00 700-900 ?00 - 67.50?eifers ?&Lge 1 Small 1 Med&Lge 2 200-300 73.00 - 84.00 - - 300-400 70.00 - 76.00 - - 400-500 67.50 - 77.00 57.00 - 69.00 64.? - 70.00 500-600 69.00 - 72.50 - ? 65.50 - 72.00 600-700 70.00 - ?? - -

Bulls Med&Lge 1 Small 1? Med&Lge 2 200-300 81.00 - 89.00 - - 300-400 77.00 - 84.00 - 74.00 - 77.00 400-500 73.50 - 82.50 64.00 - 69.00 ?0 500-600 73.00 - 84.00 - 67.00 - 70.00 Few - - 50.00 - 58.50 600-700 69.00 - 75.00 - 62.00 - 69.50 700-900 68.00 - 71.00 - 62.00 - 68.00

Slaughter Cattle 153 Head
Slaughter Cows 133 Head Breaking Utility and Commercial 2-4 34.00 - 42.50 Cutter and Boning Utility 1-3 32.00 - 43.50 Canner and Low Cutter 1-2 22.00 - 34.00
Slaughter Bulls 20 Head Yg 1? 900-1300 lbs 44.25 Yg 1-2 1300-1600 lbs 44.50 - 52.50 Yg 1-2 1600 lbs and over 44.50 - 54.00

Baby calves returned to farms 72 head newborn to 4 weeks 15.00-40.00 per head.

Lambs Total Receipts 40 Head Slaughter Lambs 18 Head New Crop Choice Few Prime 1-2 Few 3 121 lbs 68.00 Feeder Lambs 17 Head Medium and Large Frame 1-2 83 lbs 79.50 Slaughter Ewes and Rams 5 Head Ewes Choice 2-4 240 lbs 20.00 ?and Good 1-3 158 lbs 24.50

Richmond, VA
Wed June 17, 1998

USDA-VA Dept of Ag Market News
Summary of Livestock Auctions by Areas: Central and Southeast Virginia Livestock Summary Including Southside (Blackstone) Virginia for the week of June 8-13, 1998

Feeder Cattle 168 Head
Steers Small 1 Med&Lge 2 300-400 77.00 82.00 - 84.00 400-500 - 77.00 - 83.50 500-600 - 73.50 - 80.00 600-700 - 69.00 - 77.00
Heifers Med&Lge 1 ? ?300-400 73.50 - 76.50 65.00 - 66.00 70.00 - 73.00 400-500 - - 67.00 - 71.00 600-700 67.00 - 58.00 -

Carlisle Livestock

Carlisle, Pa.
June 16, 1998

SLAUGHTER CATTLE: STEERS CHOICE 1100-1400 LBS. 63.50-66.00, 1450-1600 LBS. 59.75-64.75; SELECT AND LOW CHOICE 58.75-63.00, SELECT 57.00-62.00; HOLSTEINS CHOICE 55.00-58.00, SELECT AND LOW CHOICE 48.00-54.00; HEIFERS CHOICE 60.00-63.50; COWS, ACTIVE! BREAKING UTILITY AND COMMERCIAL 40.50-45.00; CUTTER AND BONING UTILITY 37.00-42.00; CANNER AND LOW CUTTER 33.00-36.75; BIG MIDDLE 35.00-38.00; SHELLY 30.00 AND DOWN.

BULLS: 43.75-54.00.
FEEDER CATTLE: HEIFIERS 200-400

LBS. 70.00-82.50; HOLSTEINS/DAIRY TYPES 600-880 LBS. 48.50-59.00; BULLS 200-400 LBS. 80.00-99.00; HEREFORDS 650-880 LBS. 50.50-70.00; HOSLTEINS/DAIRY TYPES 48.00-58.00.

CALVES: VEALERS STANDARD AND GOOD 40.00-72.50; RETURNING TO FARTM, HOLSTEIN BULLS #1 90-140 LBS. 75.00-88.00, HOLSTEINS HEIFERS #1 90-125 LBS. 100.00-140.00; BEEF X BULLS TO 80.00.

SWINE: HOGS US#1-3 220-270 LBS. 42.50-43.00, 200-215 LBS. 40.00-40.25; US#2-3 41.00-42.00.

BOARS: 17.00-20.00.
SOWS: US#1-3 300-600 LBS. 24.75-32.00; THIN/WEAK/ROUGH TO 24.00; FEEDER PIGS BY THE HEAD, 10-25 LBS. 10.00-23.00, 30-45 LBS. 18.00-26.00.

GOATS: BY THE HEAD, MED/LRGE NANNIES AND BILLIES 60.00-85.00, FANCY KIDS 60.00-70.00, FLESHY KIDS 43.00-57.50, SMALL/THIN KIDS 7.00-36.00.

LAMBS: GOOD AND CHOICE 75-120 LBS. 81.00-102.00.

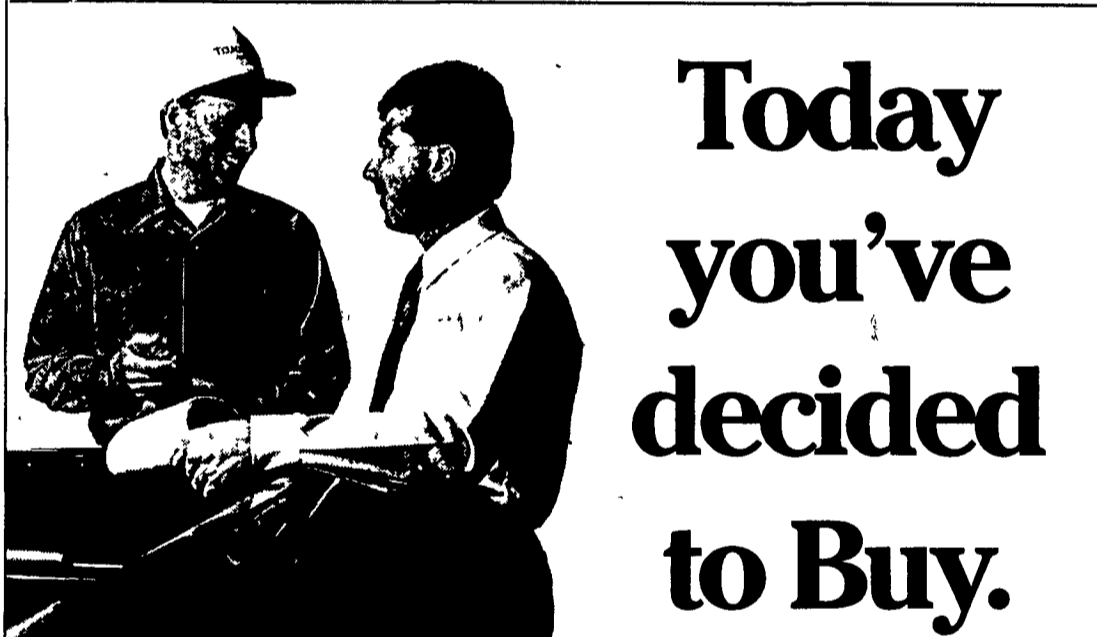
SHEEP: FAT, ALL WEIGHTS, 18.00-35.00.

SALE EVERY TUES. 5 P.M. FOR RABBITS, POULTRY AND EGGS, 6:30 P.M. FOR LIVESTOCK, STARTING WITH CALVES.

NEXT FED CATTLE TUES., JULY 7 AND 21.

SPECIAL FEEDER CATTLE SALE TUES., JUNE 21.

STATE GRADED FEEDER PIG SALES FRIDAY, JUNE 26. RECEIVING FROM 6:30 A.M. TO 10:30 A.M. SALE STARTS AT 1 P.M. PEN LOTS OF CATTLE SOLD IN ORDER RECEIVED. EARLYBIRD PENS CLOSE TUES. 2 P.M.



**Today
you've
decided
to Buy.**

But do you know about agribusiness leasing?

- Can you lease?
- Why you should lease equipment, vehicles or buildings instead of owning them?
- Are there tax advantages for you?
- What payment schedule does your business need?
- Is leasing more expensive than owning?
- Will leasing complement your estate planning?
- What happens at the end of the lease?

Call your local Telmark representative or the Telmark Customer Service Center to find out about lease financing for equipment, buildings and vehicles.



Ken Darlington
610-793-0150



Doug Snee
724-627-5941



Andrew McLean
410-827-5052



Elizabeth Anderson
410-651-4128



Mike Dixon
814-684-5707



Fred Dixon
724-346-3455



Lisa Francisco Sonnen
717-866-9217



Frank Hunter
716-595-3954



Mike Fullam
717-966-9202

TELMARK INC.
800-451-3322

Quality Assured Case IH Parts
BEST PARTS.... BEST DEAL.... BEST VALUE

When You Need Parts,
Call SALEM For FAST
Courteous Service.
Express Service To Your Farm....
Please Call Today.

"Thanks for your business!"

SALEM FARM SUPPLY

Route 22; Salem, NY
1-800-999-FARM (3276)
FAX: 518-854-3057
CASE CREDIT CARD - FARM PLAN - VISA - MASTERCARD - DISCOVER

1998 CASE CORPORATION
Visit us on the Internet at <http://www.casecorp.com>
Case IH is a registered trademark of the Corporation

CASE IH

BUY FACTORY DIRECT

TAKE ANOTHER 40% OFF!

SUPER HEAVY STEEL BUILDINGS!

- Equipment storage
- Workshops
- Hay and animal shelter

- 100% made in the U.S.A.
- 20 year warranty
- Do-it-yourself/easy, fast construction

Available models:
25x32 (2 left)
30x44 (3 left) 50x100 (2 left)
40x62 (4 left) 55x200 (2 left)

Factory Direct **800/825-5059**

American STEEL SPAN