

# TWO-DAY PUBLIC AUCTION

## Friday & Saturday, July 3 & 4, 1998

Commencing At 10 A.M. Each Day

Ridge Fire Company

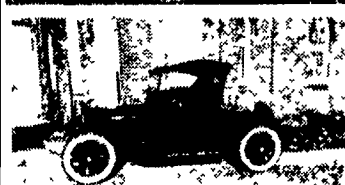
Along Rt. 23, Between Phoenixville, PA. And Rt: 100 (West of Valley Forge Or Midway Between Allentown & Wilmington) EXHIBITION: Thurs. Noon Till Nine, From 8 A.M. Fri. & Sat.

**ANTIQUE CARS & PARTS, TOYS, AUTO SALES LIT & MANUALS, COUNTRY STORE & GAS STATION SIGNS, MEMORABILIA & EQUIPMENT, COCA COLA COLLECTION, JUKE BOX AND PINBALL MACHINE**

**SELLING FRIDAY AT 10 A.M.** - A Private Collection of Country Store Signs & Equipment, Coke Cookers Of All Kinds, Neon Beer Signs, Pedal Cars & Toys; Specifically, A Pre-War Red & Green 2 Lid Embossed "Serve yourself" Coke Cooler, Other Open Coolers, 1950's Refrigerated Cooler, Coke Picnic Coolers, Coke Menu Board, Thermometers, Cases & Carriers, 18 in. Elec. Clock, Coke Wagon, Etc. About 100 Toys of All Kinds Incl. 1950's Buddy "L", Marx Tin Litho, Hard Plastic & Battery Op Toys. Ornate Turn of The Century Commercial Coffee Roaster in Brilliant Chrome. Calso Gas Pump w/"Supreme" Inserts, Vintage Outdoor Illuminated Erlanger Beer Sign, 3 Neon Beer Signs, Beer Menu Boards, Thermometers And Trays. Lg. Movie Posters For Ava Gardner "In Little Hut," Ruth Roman & Edmond O'Brien in "Shangnai Story", Rod Cameron & Johnny Mack Brown in "Short Grass." Pedal Cars And Bikes - Restored Murray Chrysler Type, Murray Tractor, Murray Auto Cycle & Scooter W/Seat. English Jeep Pedal Car, Roadmaster Girl's Motor Bike, Enlarge Frame Photos of Reading Street Scenes & Nice Selection of Old Tools And Victorian Door Hdw.) Movie Lobby Candy Machine, Cigarette Vendor, Gum Ball Mach., Big Barrel Root Beer Dispenser, Soda Fountain Goodies, Hamilton Beach Mixer, Postage Stamp Machine, Counter & Wall Displays.

**A 10% Buyer's Premium will be charged Friday Only. Absentee Bids May be Left During The Preview On Thursday.**

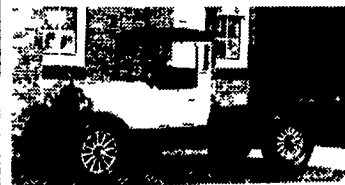
**SELLING SATURDAY AT 10 A.M.** - Exciting Automobiles, Gas Station And Car Dealer Signs, Collection of Ford Advertising And Memorabilia, Collection of Early Dodge Brothers Cars, Parts, Catalogs, Photos, Brochures & Manuals, Toys & Promos. Specifically, The Beautiful Yellow 1977 Eldorado From The Gruber Estate w/Only 22,000 Miles, A 1962 Buick Electra 225 w/Only 23,000 Miles, A Tough Old 1950 Packard Straight 8 Sedan, And My Personal Collection of Antique Dodges All At No Reserve As Follows: 1932 DK-8 5 Pass. Coupe, 1917-? Roadster, 1925 Business Coupe, 1922 Roadster, 1924 4 Pass. Coupe, 1924 Graham Bros. Truck. All These Cars Run, Most Are Exceptionally Solid, And Some Are Ready To Show. All Dodge Items Sell After 1:00 P.M. Also: Early Ford Neon Window Display, 50 Porcelain & Tin Signs, Posters, Show Room Pictures, Gas Pump Globes, Huge Flying "A" Service Station Sign In Iron Frame, Pottstown Cast Iron Street Light Complete W/Globe, Antique Hit & Miss Gas Engine w/Pump on Sprayer Tank; 10 pc. Tootsie Toy Set In Display Box, Other Auto Related Toys, Collection Of 100 Pcs. Early Dodge Sales Lit And Advertising. Seeburg Model B Jukebox - Working, United Shuffle Alley, Arcade Champion Rifle, Coca Cola Bottle Machine, Surfer Pinball Machine-Working, New York Station Gum Machine. Camper Trailer w/"Barn Door" Rear For Auto Flea Market Work - A Real Opportunity.



1922 Dodge Brothers



1925 Dodge Brothers



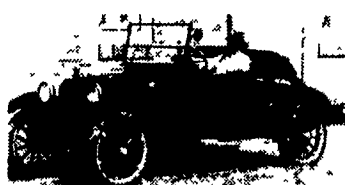
1924 Grayham Brothers



1924 Dodge Brothers



1932 Dodge 8 Cyl.



1917 Dodge Brothers



"ELDO Selling Saturday"



**TED MAURER (AU-000593-L)**

Successful Auction Management

1003 Brookwood Drive

Pottstown, PA 19464-3022

Office: (610) 323-1573

Warehouse: (610) 367-5024

