

### Public Auction Register

Closing Date Monday 5:00 P.M.

of each week's publication

Internet Sale Register will be updated every Sat. at 2:23 P.M.

SAT JUNE 27 - 9AM Along Hog Hollow Rd, off road from Cross Keys to Waterloo, 25 mi S of Port Royal on 25 mi S of Millfin, Lack Twp., Juniata Co., PA Chandler books, dozer, pickup truck, tractors, farm mach., guns, antiques, Hh goods & coll. By Q Brooks Lauthers Bryan D Imes, Auct., 717-527-2449

SAT JUNE 27 - 9AM 606 York St., Gettysburg, PA Longaberger baskets, accessories, molds & pottery Industrial Recovery Services, 717-854-0316

SAT JUNE 27 - 9AM Peoples Plaza, Corner of Rt 40 & Old 896, Glasgow, DE Lumber & Building Material Sale By Brosius-Elias Iron Hill Auct., 302-453-9138

SAT JUNE 27 - 9AM Complete store fixtures and restaurant equipment Jay's Supermarket Just off Rt. 23, Lancaster, PA take route 30 to 23 west, 2 miles to sale on left Wolgemuth Auction

SAT JUNE 27 9AM Travelnorth on Rt 180 toward Milton PA take Broadway Exit and bear right, continue to Stamms Rest turn left and go 2 mi to Beaver Rd turn left and go to the sale Tools equipment & vehicles By John Hackenberg Kenneth Hasinger & Neil Courtney Aucts 717-658-3536

SAT JUNE 27 9AM Btwn Harisburg & York PA travel 83 S to Exit 13 south on Rt 382 approx 2 1/2 mi to Texaco Gas Station turn right 1st road on right 3rd house Antiques coll furniture & guns Edward Shuler Kevin M Wickard Auct 717-243-1018

SAT JUNE 27 9AM 429 E Walnut St Palmyra Lebanon Co PA Antiques furniture coins tools coll local postcards & advertising By Bud & Jean Stauffer Harry H Bachman Auct 717-867-1809

SAT JUNE 27 - 9AM 706 White Oak Rd From Lanc take Rt 222 S L at L M Prange Svc Station 1 mi to sale Lanc Co., PA Real estate antique baler tractors 150 milk bottles, farm toys, antiques HH goods cars, tools lawn equip toy farm animals & more By Marvin & Alma Miller Snyder's Auct Svc., 717-733-7052

SAT JUNE 27 - 9AM Real estate - 12 Noon Amty Twp., Berks Co PA 15 Acre farmette, w/modern house, barn, horse stalls, 2 ponds tillable fields, pasture & farm equip JR's Auctioneering, 610-489-3661

SAT JUNE 27 - 9AM 7863 Route 25 Spring Glen Dauphin Co PA Real estate Hh goods, antiques coll coins & misc By Ruth A Ochs Scott A Klouser Auct Svc 717-362-9688

SAT JUNE 27 - 9AM Antiques

collectibles household Paxinos, PA, Northumberland Co From Shamokin go 5 miles N on Rt 61, then approx 1/4 mile N of Rt 61 & 487 Jct turn left off Rt 61 onto Reading Rd, the right on Tulip Rd to sale site Owner Donald W Hertzog Mark J Jones auct

SAT JUNE 27 - 9AM Fawn Grove Farmers Mkt, take Rt 851 to Fawn Grove, go north on 425 1/2 mi to site on right, York Co., PA Tractors, trucks, farm machinery & tools By Chris & Vernon Thompson & other consignors Susquehanna Auct Team, Inc., 717-382-1145

SAT JUNE 27 - 9AM Farm machinery, butcher equip, antiques collectibles household

real estate, farm Estate of the late Dorothy Hough of Tylersville, Pa From Rt 64 at Lamar, Pa take Rt 880 N for 8 miles turn on Rt 192 toward Rebersburg, Pa Bill Tressler, auct

SAT JUNE 27 - 9AM Corner of Rt 100 & Cadmus Rds Pottstown, PA Inspection Station & Machine Shop Auction By Fitch Bros Ken Geyer, Auct., 800-554-5005

SAT JUNE 27 - 9AM Antiques & personal property at 270 Stevens Rd., Stevens, East Cocalico Twp., Lanc Co By Mazie Gray-bille Estate Art Pannebecker, aucts

SAT JUNE 27 - 9AM Reale state, farm machinery, classic car, tools 144 Pine Lane, Douglassville, Pa By Dorothy Kramer Jr's Aucts

SAT JUNE 27 - 9AM From Creek Bndge, in Catawissa, PA, Rt 487 S for 3 2 mi, turn to Ashton Hollow Rd 9 mi, turn on Hemlock to 1st home on left Saw mill, wood working tool, chain saws, tools, truck, tractors, farm equip., produce, machinery, camping, bees, bows & more By Allen W & Dorothy E Bone George J & George R Henry, Auct., 717-799-5351

### PUBLIC SALE

OF REAL ESTATE 5 ACRES;

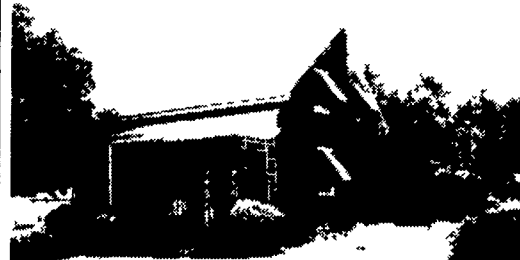
ANTIQUES, CAR,

PERSONAL PROPERTY AND COINS

SAT., JULY 11, 1998

Sale at 9:00 A.M. R.E. at 1:00 P.M.

Located at 45 Sandy Hill Rd West Cocalico Twp Lanc Co From Rt 272 N of Ephrata at PP&L Building take Schoeneck Rd about 4 miles to Sandy Hill Rd Watch for signs!!!



Real Estate consists of 5.2 ACRES having erected thereon a 2 story sandstone dwelling, containing kitchen, dining room, living room, full bath, 3 bedrooms upstairs, basement oil hot air heat, well and sewer system on site Also on property is a 2-car block garage, and other out buildings

10% down day of sale, balance at settlement, for inspection of property call 717-336-5408 or 336-6983 for app't J Noel, Att'y

Terms by:

**REBECCA M. CARPENTER**  
ESTATE



#AU001476L  
717-336-6983 or 336-2933 Fax  
Barry Wanger #AU001229-L  
Ben Habecker #AU001296-L

### "Horst Auction Center"

### PUBLIC SALE

ANTIQUES, HOUSEHOLD GOODS, COLLECTIBLES & TOOLS

WED., JUNE 24, 1998 AT 2 PM

Sale to be held at the Horst Auction Center, located at the corner of Rt. 322 and Durlach Rd. (approx. 2 1/2 miles west of Ephrata, parking lot entrance is on Durlach Rd., just north of the traffic light), Ephrata, Lancaster County, PA.

**FURNITURE:** ANTIQUE BLIND DUTCH CUPBOARD; Schoolmaster's Desk (Sheraton Style w/Top); Cherry 6 Leg Table; Set of 6 Half Spindle Chairs; Victorian Gentleman's & Lady's Chairs; Pr. Marble Stands; Marble Coffee Table; Cane Seat Chairs; Decorated Rocker; New England Chair; Mahogany Table Set (Leather Top); **FINE SUMTER CHERRY BEDROOM SUITE;** Cherry Credenza; **MODERN OAK-** Dinette Set; Hutch; **MAPLE -** Desk Dresser; **MODERN PINE -** Sofa Tables; Ladderback Rocker; Living Room Suite; Love Seat; Recliners; Box Springs & Mattresses; Trunk; School Desks; Child's Table & Chairs; Child's Hutch; Ice Cream Parlor Chairs; Poker Table; Filing Cabinets.

**APPLIANCES:** Refrigerator; Maytag Auto. Washer; Dryer; Microwave; Riccar Sewing Machine; Exercise Equipment; Lamps; Cookware; Ornate Brass Andirons; R.R. Lantern; Iron Animals

**CHINA & GLASSWARE:** Chocolate Set; R.S Germany; Mustache Cups; Ironstone, Blue Willow; German, Warwick; Tea Sets, Set of Bavarian China; Pr. of Coronation Mugs; Franklin Mint Vases; Set of Sierra Dishes, Bone China, Stoneware Crocks & Cookie Jars, Roseville & Art Pottery Shaker Collection Occupied Japan; Pressed & Pattern Glass; Ruby Rimmed Glass, **COLLECTION OF HEISEY GLASSWARE;** Opaescent Hobnail; Westmoreland Glass, Bristol Vase, Collection of Elephant Figurines

**LINENS:** Fancywork; Painting of Hinkletown Mill (by Book); Prints

**TOYS & GAMES:** Fisher Price Toys; Marx Elec Train Set; Child's Sewing Machine, Erector Set, Chemistry Sets, Marble Roller, Dollhouse; Puppet, Dolls, Pedal Tractor & Wagon; Coaster Wagon;

**TOOLS:** Hand Tools, Pellet Guns; Fishing Equipment; Fish Finder, Sets of Golf Clubs; Bicycle, Sled; Wooden Shaft Golf Clubs

No out of State Checks Unless Accompanied by a Current Bank Letter or Prior Arrangement with Auction Service.

**HORST AUCTS.**  
T. Glenn (717) 859-1331 • (717) 738-3080  
Timothy G. Fax # (717) 738-2132  
Thomas A. "VOICES OF EXPERIENCE"

### ESTATE AUCTION

SAT., JUNE 27, 1998

Starting 9:00 AM Sharp

Estate of the late Dorothy Hough of Tylersville, PA - Clinton County - From Route 64 at Lamar, PA - Take Route 880 N for 8 miles turn on Route 192 toward Rebersburg, PA Look for Auction Signs

**Farm Machinery; Butcher Equipment; Antiques - Collectibles; Household; Real Estate - Farm**  
**FARM MACHINERY - Sold First**

2-Allis Chalmers W/C Tractors, as is, A/C Blower, Int 7 ft Mower Int 6-ft Combine, New Holland Spreader, 10-ft Cultipacker Flat Wagon, Wagon Chassey, John Deere Flail Chopper, 8-ft Disc Gehl Corn-Grass Harvester, John Deere 2-Row Corn Planter 2-Ontario Disc Grain Drills, 28-in Tractor Tires 40-ft New Idea Elevator, A/C Corn Cultivator Syracuse Horse Plow Wood Grain Elevator, Side Hitch 4-in Grain Auger, False End Gates, Wagon Side-Boards, Log Chains, Vise, Fence Stretchers, tap & Die Set, 25 Endless Belt, Bag Cart, Straw Forks Feed Scoops Feed Boxes, Wagon Tongs, Wood Ladders Gehl Hammer Mill, Feed Carts, Feed Bags, Fogger, Milk Cans, 3-Surge Milkers, 5 HP Motor w/DeLaval Milk Pump, 250-Gal Girtion Milk Tank, Wash Tubs, Carrying Buckets, 2-DeLaval Milkers Farm Sprayer, Scrap Pile, Misc Farm Items, Old Machinery sold as is

#### BUTCHER EQUIPMENT

2-Large Kettles, Hog Hangers, Sealer Machine, Meat Hooks, Scalding Trough, Cutting Tables, Reducer-Trans -Elec Motor for Meat Grinder & Bench, Scrapplie Pans, Metal Funnel

#### ANTIQUES-COLLECTIBLES

Library Table, Smoke Stand, Wood Barrel, Metal Ice Box Crocks Pie Case Plank Chairs Set of Plant Chairs, Spoon Oak Dresser Single & Double Iron Beds, Old Pictures Frames, Cabinet w/Wood Bow Front Doors, Wood Double Beds High Back Oak Rocker Wood High Chair, Doll Crb, Playpen, Plank Rocker, Pitcher & Bowl Set, Wood Strands, Oak Dresser w/Mirror, Fancy Iron Brass Double Bed, Pin Oak Dresser, Blonde Dovetail Dresser Cane Bottom Rocker Empire Dresser Wood Wardrobe Oak Washstand w/ Towel Rack Pine Washstand Oak Chest of Drawers Press-Back Cane Chairs Wood Iron Board Wood Benches Pine Drop-Leaf Table Set Back Kitchen Cabinet Night Stand Pine Dovetail Dresser Kitchen Cupboard Set of 5 Plank Chairs Cupboard Tops Wood Box, Oak Cupboard B&K Disinfect Wood Box, Paroway Wood Box, Wood Push Sweeper, Wood Stands, Comforters Rogers Silverware Bed Light, High Dry Sink Pine Depression Coffee Cups Blue Drepression Coffee Cups, Blue Flower Vase Carnival Bowls Press Glass Green Anchor Vases Royal Ruby Glasses & Pitcher Fire King Cups & Saucers Meat Plates Coal Bucket Red Painted Blanket Chest

#### HOUSEHOLD

Upright Freezer 2 Chest Freezers Auto Washer Maytag And Wringer Washer Canning Jars Misc Dishes Fan Iron Carnival Doll - Clown Plywood Wardrobe Kenmore Elec Sewing Mach Daybeds Bedding Kenmore Microwave Frying Pans Wood Desk Mag Racks Couch Stuffed Chairs Tree Rack Maple Chairs Porch Chairs Touch Lamps Single Beds Pots & Pans Smoking Strands Kitchen Utensils Silverware Metal Kitchen Cabinets

#### REAL ESTATE - FARM

Approximately 97 Acres - Wood House, Shingle Roof Full Bath 1/2 Bath 10 Rooms Fireplace on First Floor, Full Attic Full Cellar Closed Porch Front & Back Porches Smoke House Large Barn Milk House Pole Equip Shed Corn Cribs Wagon Shed Shell Pit Water Stream runs on land

TERMS: 10% down day of auction Balance within 30 days Owner has right to accept or reject all bids

Lunch Served - Job Johnny - Tent, if needed

TERMS: Cash or Good Check Day of Auction

All Out of State Checks Must Have Bank Letter

NOTE: Auctioneer & Owner not responsible For Accidents - All announcements day of sale take precedence over all others

Bill Tressler, Auctioneer, AU953L  
PA Licensed and Bonded  
R D #3, Box 451  
Mill Hill PA 17751  
717-726-3200

### Public Auction

**SATURDAY:**  
**JUNE 27, 1998**  
**9:00 A.M.**

ANTIQUES FURNITURE COINS

TOOLS COLLECTIBLES LOCAL POSTCARDS & ADVERTISING

LOCATION: 429 East Walnut Street, Palmyra, Lebanon County, PA. From Route 422 traffic light at Klick Lewis - South on Forge Road 4 blocks - right onto Walnut Street From Route 322 at east end of Campbelltown - North on Rt. 117/Forge Road to Forge Street Elementary School - left on Walnut Street

Marble top bureau w/mirror; cherry walnut 1 drawer stands, cherry drop leaf table, candle stand, 8 - 2 lid wood box, spool bed w/boxspring & mattress; red, white & blue 2 pc coverlet; granite milk pail; miners lamps; tools; CLOCKS Inc. walnut regulator, unusual brass Ansonia & gingerbread; selection of kerosene lamps, small mortised bench, large Dietz Pioneer lantern; old deeds; miners lunch bucket, slaw cutter; 3 pc. Wedgewood Pitcher set; wooden meat grinder; tobacco cutter; cigar mold ABC plates, wooden dumb bells; advertising tins & boxes; yard sticks; R.R. lanterns; framed pictures; chapel bell; tobacco sizers; brass kettle; set of Otoo Indian postcards, brass ladle; baskets; Palmyra Old Home Week postcards; Hershey books; store scales w/brass scoop; nutmeg grinder, local postcards; mush pots; Palmyra & local advertising pcs.; broad axe; wooden planes, wooden noodle roller; copper tea kettle; wooden forks & rakes; flax breaker; meat grinders; grain flail, hames; pie boards; copper ladle; sleds; set of 12 Stangl plates; rug beaters; gypsy pot; buck saw; 2 man saw; school bell; goat bucket; wash board; brass candle stick; old picture of Palmyra farm; fire tongs, meat forks; clever; N England cheese knife; valentines; demijons; copper measure, Aurora platter; meat forks, picture of Cornwall mine; pictures of Palmyra, farm lanterns, cow bells; ice tongs; copper coffee pot; wooden measures; canes & walking sticks, R R conductors box; 1950 Blaupunkt radio, Philco Jr Cathedral radio, pocket knives, campaign buttons; pitch forks; wooden mal-let; hay knife; tea pots, dough scraper, 1843 \$2 1/2 gold piece, silver dollars; V nickels; silver & clad halves, Indian cents, key wind pocket watch; milk white sugar shaker w/brass top, pr. cobalt vases, Hess trucks; wooden tools boxes; photos of 1910 Old Home Week, photo of Palmyra Iroquois band; trivets, cast iron toy stove w/utensils, jardinere and many other unlisted items.

Jean and I are happy to offer at auction this fine collection of antiques, collectible and local memorabilia. Clean, quality items ready for your home.

NOTE: Inspection of items auction day only. Terms are cash or approved check. No out of state checks unless accompanied by a current bank letter of credit. Food and toilet facilities.

Auction by

**BUD and JEAN**  
**STAUFFER**

**HARRY H. BACHMAN**  
AUCTIONEER  
2051 Horseshoe Pike  
Annville, Pa 17003  
(717) 867-1809



### PUBLIC AUCTION

Construction Equip; Trucks

Fri., June 26, 10 AM

At 340 Bowers Road, Bowers, Berks County, PA (between Topton and Fleetwood turn north off Fleetwood Road onto Bowers Road, cross RR tracks)

#### Equipment

1987 Case 580K 4x4 extended hoe backhoe/loader, 5700 hrs; 1987 CASE 1854C skid loader, 3400 hrs; 1981 JD 755 track loader, very good condition;



#### Trucks

1979 Mack 10 wheel dump, 285 eng, 44 rears, 16 front, 9 spd, Fuller trans; Hudson 5 ton trailer; (2) 1991 Ford F250 extended van; 1990 Ford F250 4x4 pickup w/tow pack, Myers snowplow; Myers salt spreader, like new, used only twice; 1988 Chev 1500 pickup; 1984 Chevy pickup w/tow pack; 1972 GMC 16' flat bed dump;

#### More Equipment

25' Scissor man lift w/5'x12' platform, gas eng; 1800 psi hot water high press washer;

Pacer trash pump w/gas eng; DeWalt 12" compound mitre saw; Makita 10" mitre saw; hvy duty Milwaukee rotary hammer; 3 Milwaukee hammer drills; 5-2500, 3500, 4000 watt Generac generators; 5 - Twin Tank Emglo air compressors w/Honda engs; 2 - Emglo twin tank compressors with elec motors; Wacker dirt compactor; Stihl 14" mason saw w/gas eng; (2) Eagle-2 self level Laser transit levels w/tripod; Eagle-1 Laser level transit w/tripod; 2 sight transits; Stihl chain saws; air & elec impact wrenches; stationery Speed Air shop comp; lot Senco Sn4 & Sn70 framing nailers; lot Stantec framing nailers; Senco trim & Staple nailers; Bostich roofing nailers; 1/2" DeWalt & Milwaukee drills inc right angle; 3/8" Makita drills; lot of Milwaukee 7-1/4" circ saws; DeWalt, B&D, Milwaukee sawzalls; fiberglass & alu ext ladders; lot 6' & 8' fiberglass step ladders; pole, roof & ladder jacks; alu scaffold planks; 2 alu coil breaks; scaffolding; Craftsman tool box & tools; new windows, doors, siding, soffits, sewer, & drain pipes; 18", 24", 36" storm sewer pipes; lot elec ext cords, air hoses; alu bull floats, rakes, shovels, concrete pins & tools; plus many fine items too numerous to list.

Auct. Note: Most equip & tools are in very good cond

Terms -- Cash, PA Check

Selling for **JB Construction**

**Z Ralph W. ZETTEMAYER AUCTION Co., Inc.**  
820 Nursery St. • Box 215 (610) 395-8084 Fax (610) 395-0227  
Fogelsville, PA 18051-0215 "Proven Service Since 1955"

AU-001809-L