

## Adams Conservation District Schedules Field Day

**JINNY WILT**  
Adams Co. Correspondent  
GETTYSBURG (Adams Co.)  
— Does making your farming operation more profitable intrigue you?

Information on doing just that will be on the agenda of Farm Field Day sponsored by the Adams County Conservation District from 8:30 a.m. to 4 p.m. June 30.

David Kann Jr., the district's Chesapeake Bay nutrient management technician, asks those wanting to join the tour to call (717) 334-0636 to reserve a spot for the day, which kicks off with coffee and donuts at the United Brethren Church in Heidlersburg, next to the fire hall.

The group will first travel to the Lobaugh Farms, where different types of manure storage will be discussed.

"It's not too often that you have farm operations that has three types of manure storages in close proximity so it makes it very accessible for the bus to come in . . . there are three distinct styles with the slurry above ground, a slurry with a ramp inground, and a stack storage," Kann said.

The most recent storage facility built on a Lobaugh farm is an 80-foot circular concrete tank in the ground with a ramp and was constructed under the Chesapeake Bay Program, according to Kann.

"Those storages are very new and in fact the design for those was approved in 1996. The first storage like that went in in Franklin County.

"So with farmers using a lot more bedding or different styles of bedding with lime and sand, their

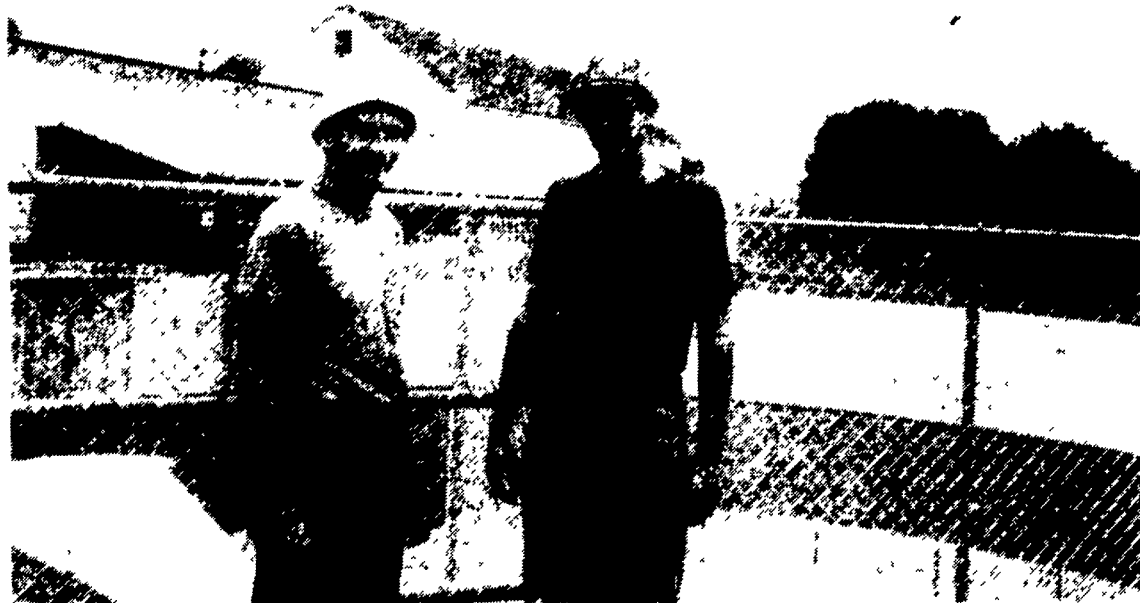
fear was that you couldn't get down and get that material out of the bottom. Now the engineers have designed these storages with the ramps so you can pump out as much as you can, but if you get a lot of heavy stuff settling in the bottom you can access with the ramp. You can go down there with the front end loader and clean the heavier stuff out," Kann explained.

Depending on the weather, the manure will be able to be hauled as a solid or a liquid.

A second manure storage is an above-ground tank that has been in operation since 1980, according to Dean Lobaugh.

And the third is the stackable facility on the farm operated by Vince Lobaugh. Its contract with the Chesapeake Bay Program will end this fall.

On this storage pit, Kann said, "Whatever rain falls on it bleeds out through a pipe system and the material going through the pipe goes on vegetation. The grass can actually suck up the nutrients that are in that dirty water. We don't like these types of storages for barn lots that have a lot of exposed area and get a lot of rain water be-



At left, Dean Lobaugh and his brother Vince Lobaugh are in partnership in three farms off of Lobaugh Road near Aspers in Adams County. They are standing in front of a recently completed concrete ramp manure pit on the one farm. The new pit was installed under the Chesapeake Bay Program through the Adams County Conservation District.

cause it's just too much water to go through a pipe work and send into a filter such as a grassy area," Kann said.

Speakers at the Lobaugh farms will talk about options for manure storage and odor control.

Kann will also provide information on manure spreader calibration.

Gary Helm of the Pennsylvania

Farm Bureau Legal Service will provide information on estate transfer including common estate planning documents, taxes affecting operations and transfer and tools for lifetime transfer of a farm.

Amy Skvarka of Pennsylvania Farmlink, Inc. will discuss her agency and what it has to offer.

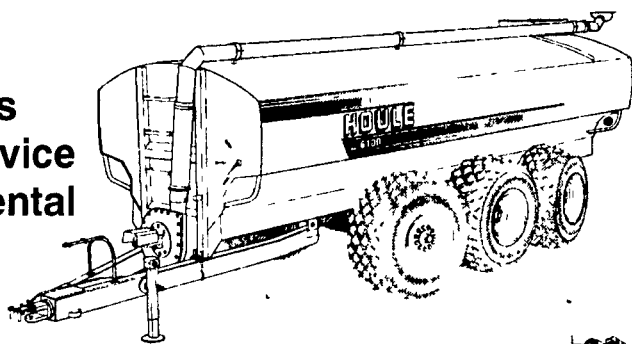
Larry Swartz of Penn State Co-

operative Extension and Vince McCollum of the conservation district will provide information on nitrogen trials.

There will also be information on the tour on a stream bank fencing program and riparian buffers, alternative crops, a woodlot management plan and the best management practices for woodlots and harvesting techniques.

## NOBODY STICKS THEIR NOSE IN OUR BUSINESS

- Sales
- Service
- Rental



- Custom Application
- Installation
- Custom Design

Liquid Manure is a valuable resource and a challenge to handle. You need an expert!

At Mid-Atlantic Agrisystems, liquid manure is our bread and butter not a sideline. To solve your problems we carry the most

complete line of equipment in the region, have years of practical hands-on experience, and offer valuable knowledge about products and the latest, most effective manure handling equipment.

Call the experts.  
Call Mid-Atlantic.

### USED/RENTAL LIQUID MANURE EQUIPMENT

#### June Special

1995 Houle 5,250 gal. w/6 28Lx26 tires, exc. shape, all options ..... \$24,000

#### Spreaders

1998 Houle 4800 gal. w/28Lx26 tires, steering and brakes ..... \$21,900

1998 Houle 6000 w/Brakes 28Lx26 tires ..... \$20,400

1998 Houle 3600 gal. w/23.1x26 tires ..... \$12,500

1997 Houle 3600 gal. w/23.1x26 tires ..... \$11,500

1992 Houle 4,250 gal., w/ 23.1x26 tires ..... \$11,800

1997 Houle 4,800 gal. w/28Lx26 tires, no brakes, excellent condition ..... \$15,500

1978 IH Paystar Truck w/approx. 4,000 gal. Diller tank ..... \$15,000

Hesston 2,200 gal. Tank, Good Undercarriage, As is ..... \$1,000

1997 Balzer 3,350 vacuum 23.1x26 rental ..... \$15,900

1992 Calumet 3750, 1992 w/50x21-20 used ..... \$7,000

1997 Houle 42' Lagoon Pump w/Duals ..... \$7,200

Houle 42' Multi-purpose pump ..... \$11,800

Houle 28" Maxi-Pump ..... CALL

1997 Houle 42' Lagoon SUPER PUMP, excellent for thick manure w/sand ..... \$8,150

Houle pto irrigation pumps, rental unit ..... CALL

Houle 42' and 32' Agi Pumps ..... CALL

Butler Lagoon Pump Working Condition ..... \$2,000

1997 Houle 42' Lagoon SUPER PUMP, excellent for thick manure w/sand ..... \$8,150

Houle pto irrigation pumps, rental unit ..... CALL

Houle 42' and 32' Agi Pumps ..... CALL

Butler Lagoon Pump Working Condition ..... \$2,000

**POURED WALLS**

**MANURE PITS WITH SLATTED FLOORS OR LAGOONS**

**AARON E. FISHER**  
434 Newport Road  
Ronks, PA 17572  
717-656-6486 Leave Message or Call Monday, Wednesday, Friday 7 PM - 7:30 PM

**POURED WALLS**

**Painting - Sandblasting - Power Washing**

Farm Buildings - Deck - Fences - Masonry Walls  
Specializing in roof painting & coating

**Amos Fisher**  
303 Pequea Valley Rd.  
Kinzers, PA 17535  
717-768-3722

**MILK WANTED NOW!!**

Lanco Dairy Farmer Co-Op Inc. Need Milk For Summer & Fall. Farmers Are Welcome.

Time: June 30, 8:00 P.M.  
Place: Brunnerville Fire Hall Lititz, PA 17543

Let Us Help You Take More Control Over Your Farm Business

**LANCO -Farmer's Helping Farmers**  
Phone 410-658-7532



See one of our latest installations of Houle Chain Alley Scraper at Skyline Acres, Shartlesville, PA June 25

Top Volume  
**HOULE**  
Dealer in Northeast Last 5 Years  
Second Largest Houle Dealer In The World!

## Mid-Atlantic AgriSystems

4019 Ashville Rd., Quarryville, Pa. 17566

800-222-2948

717-529-2782

