

## KEYSTONE TARPS

SERVICE & SALES

Is A Manufacturer Of Custom Tarps

- Systems
- Tarps
- Storage Covers
- Load Straps
- Gloves
- Used Railroad Ties



1-800-798-TARP  
(8277)



FAX 717-435-0036 717-435-0752

1979 Ford 7000 tractor, S/A.

1994 Hillsboro 28' Gooseneck Trailer, Beaver Tail, Dual Wheels.

(610) 444-1651



Int. Diesel Water Truck, Set up for Race Track or Construction \$2,500  
610-944-9871

## TRUCKS TRUCKS

- 91 Dodge Dakota, 4WD, Auto, Air, P/S, P/B, Bed Liner, 66,000 Orig. Miles \$4,500 OBO
- 88 F-350, 2WD, Cab Chassis, Stick, Motor Bad... \$2,900 OBO
- 87 F-350, 2WD, 6.9 Diesel, Auto, 10' Flatbed, Runs Well... \$3,800 OBO
- 79 Mack DM S/A Dump, New Paint, Body, Full Hyd. for Plow, Spreader, 43,000 Orig. Miles, Real Nice... \$25,000 OBO

973/347-1101

1968 - 1998

# KEEN

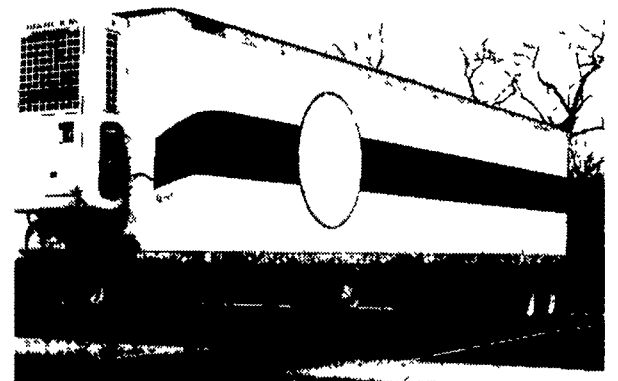
## TRUCK RENTAL & LEASING

801 Katie Court  
Harrisburg PA 17109

717-564-4511  
FAX 717-564-4519



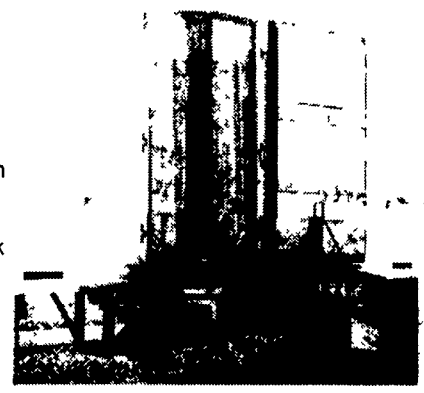
1995 Ford F350 Crew Cab Dually 460 Elec Gas, A/T w/Overdrive, Ratio 3.90, A/C, P/S, P/W, P/L, P/B w/Elec Brake Bench Cloth Seats, Centerian Trk. Pkg, 23,000 Miles Lots of Chrome Goodies, Clean, Priced To Sell



1990 Great Dane Reefer 45'x96" Rear Roll Up Door, Sliding Tandem, Tires 275/80R 22.5. Unit-Thermo King Super II Hours 23,082 8 Year Old Tri Nice Condition

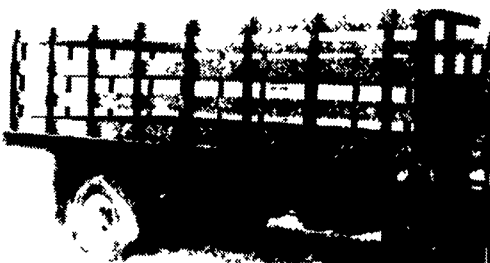


1997 Utility VS2R 45'x96" 13' Height 36" King Pin, Air Ride Suspension, 142" Slider, Dump Valves on Air Ride, 12" Crossmembers, C/S Side Door, 6" Additional Height, w/2000 Lb. Liftgate, Strip Curtain, 1 Halogen Spot Light Rear Roll Up Door w/Strip Curtain, Maxon 2000lb Rallift, 2 Halogen Spots E-Track 24" and 36" Length of Trailer ABS Brakes 1 1/4" Alum Extruded Floor Thermo King Super II Smart Reefer, 2,636 Hours (Excellent Condition—Priced To Move)



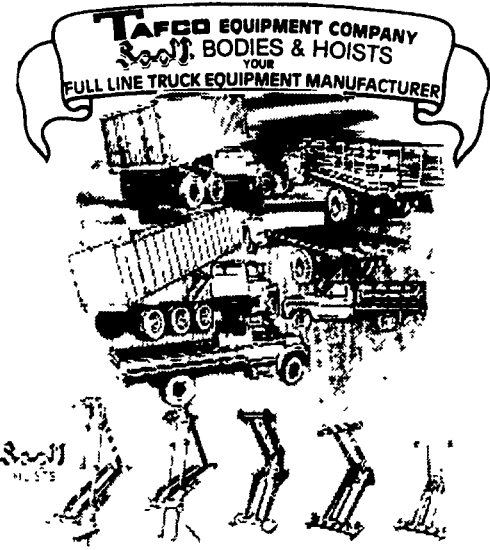
## Binkley & Hurst Bros. Cash & Carry Sale On Truck Flat Beds With

**Scott** POLY BOARD RACKS



## New Scott Truck Bodies In Stock

- (1) 14x96" Flat Bed w/Racks ... \$2,200
  - (2) 16x96" Flat Bed w/Racks ... \$2,500
  - (1) 14' Contractor Body w/Fold Down Sides - Not Set Up - Cash & Carry ... \$2,600
  - (1) 18' Scott Ensilage Body w/Hyd. Tailgate, No Hoist, 7GA Steel Floor ... \$5,400
  - (1) 18'x62" Steel Grain Body, Wood Floor ... \$4,825
- Truck Hoist Starting At ... \$1,200 & Up



Call Today and Ask For Dean Truck Bodies In Stock



1988 Ford Super Duty, 17 Ft. Chevron Rollback w/Tow Bar \$9,500



1995 UllHaul 3-Car 48' Carrier Trailer, 14,000 GVW, Gooseneck Hitch, Twin Axle \$7,300



1997 International T444E 5-Spd. Loaded, 19 Ft. JerDan Rollback w/Wheel Lift, 42,000 Miles \$32,500



(1) 89 & (1) 91 International 9670 Cab Overs, Cummins Diesel, 9-Spd. Trans, Call for Individual Specs. \$9,400



1990 Ford F350 14 ft. Alum. Stake Dump, V8, At, New Inspection, 90,200 Miles \$9,100



1998 UD 1800 Loaded Cowell/Danco Rollback, Wheel Lift - Call for Details -



'97 & '98 UD 1400 & 1800, 16' & 18' Van Bodies and Cab & Chassis Avail. - Call for Details -



1998 UD 1800 With 10ft. Dump Body \$36,031



1993 GMC Diesel w/14' Van Body, Auto Trans, AM/FM, 14,250 GVWR \$9,200

## CENTRAL GARAGE, Inc.

610-589-4581 or 800-860-4581

South 2nd St. (Rt. 419) Womelsdorf, Berks County, PA



BINKLEY-HURST BROS. INC.



133 Rothsville Station Rd.  
P.O. Box 0395, Lititz, PA 17543-0395  
(717) 626-4705 1-800-414-4705 Fax (717) 626-0996