



Your Mailbox Market listing will also appear on our Lancaster Farming Internet Web Site. This web page is updated every Saturday evening. Check Us Out at [www.lancasterfarming.com](http://www.lancasterfarming.com)

Email address [farming@lancasterfarming.com](mailto:farming@lancasterfarming.com)

**MAILBOX MARKET FOR SALE**

Honda Big Red 200cc rack, new front tire, hi-lo, reverse, exc plastic, hitch, needs carb work, nice, \$300 OBO 610-488-7211 Berks Co

77 Kenworth w/16' silage, grain body ta 301-371-7704 Fred Co

Steel curtain roll-up door, 20' W x 14' H, good cond, w/electric opener Also poly tanks on skids 717-354-4996 Lanc Co

Flat bed diamond plate floor w/head board off 1-ton truck, \$125 OBO After 5 410-939-4365 Harford Co

Farquhar threshing mach., 1969 Chevy p/u trk w/cap 1978 Datsun 280Z 717-367-6108 Lanc Co

Clark 4000 lb forklift, \$800, Ingrand 175CFM Comp dies, \$1500, 88 Ford F250 p/u, 7.3 dies, auto \$3000 Wauk dsl pwr unit 410-348-2785 Cecil Co

Oliver superior small manure spreader, Ser #7-5197, ground driven, rubber tires, needs some work, 18"x40"x8-1/2", not junk, \$225 410-357-4580 Balt Co

Gravelly tractor mod 20-G, VG cond, new 20 hp engine w/2 yr warranty, 60" deck, \$4800 610-857-9920 Chester Co

955K loader, 1969 Diamond Reo tri-axle, 18-ton Eager Beaver trailer, 1939, 1-ton Ford trucks for parts or restore 717-249-2100 Cumb Co

6-ton running gear, 323 Weaverline, new chain, \$500, wanted watering tubes for mums 717-486-8578 Cumb Co

Bradford white electric hot water heater, 80 gal, 2, 4500 watt elements, new September 1997, \$350 717-776-3427 Cumb Co

NH 56 rake, good cond, metal teeth, weathered, \$1000 610-837-1086 Northampton Co

English bulldog puppy, AKC, beautiful brindle and lots of white male, \$1000, also a younger litter, white 717-374-5630 Snyder Co

Registered Shropshire yearling rams, ewes Vaccinated, ready for fall breeding 717-949-3653 Leb Co

D S machine bucket-a-day water heater, \$50, 323 com picker w/engine, field ready Levi Z Fisher, 520 Caines Rd, Gap, Pa 717-442-8835 lv mssg Lanc Co

Willys Jeep, 1946 set of axles, \$250 or BO, 11 hp Little Wonder leaf blower Call before 9 pm 610-589-2874 Berks Co

Railroad ties, 7.50 ea, also I-beams 8x14, 10x14x29, 10x10, 10-15 cents per lb Amos Stoltzfus, 58 Picadilly Rd, Quarryville, Rd, 17566

Horse trailer, B P, ramp, full escape doors, swing divider, exterior brush boxes, dressing room, saddle racks, shelves, \$2000 610-494-5128 Del Co

Dunham 10' cultivator, 275 gal fuel tank, 35 Rem pump M141 w/scope, sling, 1-1/2 bxs ammo JD 3 pth plow, 2x14 w/coulters 610-593-5601

JD 2-14 plow, good cond, \$350 OBO, rear springs from GMS Topkick 6000 lb, make offer 610-298-2412 Lehigh Co

JD-455 54" cut, \$8750, JD-425 48" cut, \$6850, JD-F510, 38" cut, \$2800, JD 47" snow blower comp, \$1950, 880 Trac-Vac, \$1650 215-536-7997 Bucks Co

David Brown Model 1200 tractor for parts, missing diesel motor, rad and sheet metal, \$650 whole or parts 610-273-2423 Chester Co

12x65 mobil home, \$250, #10 corn picker, \$150, Ford 4 speed trans, \$75, F150 cab, \$100, good cond 717-423-5306 Cumb Co

3/4 and 7/8 Boer Buck kids born March 1998, dehorned, vaccinated, CAE and Johnes Negative Herd, \$150 ea 860-349-1310 Middlesex Co

Ford 152 plow, semi mounted, auto, reset, 6 bottom, 16 inch 717-386-2215 Carbon Co

New Holland grinder, mixer, 355 extension auger, 2 screens, like new ground, less than 30 mixings, \$4975 540-984-8884 Shenandoah Co Va

Oats for feed and seed, seed corn, timothy, clover, barley, alfalfa, ear corn 717-444-3968 Perry Co

Hauimark 18 enclosed trailer rear doors, jacks, brakes, brand new, cost 4600, sacrifice 3500, health forced sale 610-489-1253 Montg Co

#58 New Holland bale thrower, good shape, \$450 OBO New Holland 275 baler for parts, best offer Belgian mare, 14.3 H 717-733-9141 Lanc Co

Army trucks 5-ton, red, \$700, GMC, \$900, Int'l, \$6,000, Farmall Tractor C, \$1100 410-838-5091 Harford Co

8 yr old standard bred pacer, holds hard, \$1300 717-661-7316 Lanc Co

JD 4230 factory cab, clean, good cond, JD 14' 210, totally rebuilt disc, 16' cultipacker No Sunday calls, 717-530-1182 Frankl Co

3 r, 7' bar mower, 45 baler elevator, all for \$100, Slulle grain moisture tester, \$75 717-733-4605 Lanc Co

Vermeer 3 pt disc mower, 7', older unit but functions ok, now shroud, \$875 717-273-5941 Leb Co

2 - 13 inch disk hillers, 1-1/4 shaft electric hospital bed, like new 717-784-0848 Col Co

1996, 16' Hudson trailer, 10,000 lbs, exc cond, w/add on tool box, \$2000 717-776-7311 Cumb Co

Hereford Bull, 2 yrs old, proven breeder, \$850 OBO Miniature donkeys, Grer Dunn, Jack White, Spotted Jenette R1, Box 216 A, Spring Mills, PA 16875

430 Int baler, 7700 JD combine for parts or whole, barley straw out of field 610-448-6201 Berks Co

MF 410 combine H43 com head, 13' grain head, \$2000 or BO 610-926-7825 Berks Co

Bees, 9 frames, hives of honeybees in your box New Queens this year, marked, \$70 717-768-3606 Lanc Co

Goats, kids, Pygmys all dehorned, does, \$75, reg wethers, \$50, will make exc pets, small and quiet 610-469-9234 Chester Co

2-way radios complete set, 4 mobile, 2 hand-held, used only 6 mos, like new, 1500 for all 717-733-7415 Lanc Co

JD 328 baler w/#40 kicker and big impiment tires, like new cond. 814-695-1264 Blair Co

Flashy, 6 yr old, reg. AQHA sorrel mare, 15 2 h, exc. all around western horse for trail, show, rodeo. 717-724-3740 Tioga Co

Ford 4500 diesel tractor w/1 yd loader, also 3 pt 32" treespade, best offer Cash or trade. 410-658-3015 Cecil Co

Gehl 1080 discbine, also 10 gal electric water heater Wanted. used Harvestore silo 717-656-9523 Lanc. Co.

1978 Chev. Impala, 9 pass, station wagon, 93,000 orig mi., 1 owner, dk blue, good cond., \$800, pnce neg 717-733-4269 Lanc Co

Ford 1971, F-250 dual-wheel rear, 410 ratio; also woodwork equipment, planer, shaper, biscuit joiner, saws, sander. 717-889-3659 Schuyl Co

Honda lawn tractor H4514H, 13 hp liquid cooled 2 cyl engine, 38" deck, VG cond, just serviced, \$2950 610-857-3191 Chester Co

28 acres wheat straw, near Swedesboro, NJ to be baled, best offer takes it 215-345-9395 Bucks Co

Ford Commander six thousand, JD M restored Cub w/cultivators 914-374-2412 Orange Co

WD45 CA B cultivators, plows, subsoilers, SC blade, B rear, WC front, factory steel, D-14, WE45 B parts. 717-284-2540 Lanc Co

JD42 combine, 9 ft. cut, round back, good cond, 4 new North Brook 10 cell cow mattresses and covers 717-292-6361 York Co

1951 Massey Harris 30 3 pth, \$2000, 2 rims 10x28, 8 bolt holes, 6" center, \$100, 7x24 turf tires for Cub mounted on rims, \$150 610-588-7545 Northampton Co

New vending machines 4 compartments w/decorative animal outside shell, 4 different kinds take all 25 at \$125 ea 609-587-0608 Mercer Co

18' 18,000 GVW tri-axle gooseneck equipment trailer, low deck height, call after 6 pm \$4800 OBO 717-274-1646 Leb Co

2 seated carriage, rubber tire, good shape, kettle and tri-pot wooden rakes, saws Lloyd Martin, 704 Red Run Rd., New Holland, PA 17557 Lanc. Co.

Collectors Farmall Super MTA 1954 Model S/N 75398 show room cond, new rear tires, power steering, live hyd. 717-367-9052 Lanc. Co.

1155 MF w/Cab, good running cond, 7500, Oliver 5 bottom plow, 16" auto-trip, 400, trips good 717-653-5819 Lanc Co

Nubian goats, dehorned, vaccinations, Brucellosis and TB test neg, wormed, ready to go. Make good pets or milker 717-756-3792 Susquehanna Co.

White tail deer fawns, bottle fed. 610-652-4314 Berks Co.

White Eskimo spits puppy Jonas J King, 248 Blank Rd., Narvon, Pa., 17555.

1979 Ford Thunderbird 302, 74,000 mi., orig. owner, very good shape, chrome perfect, has never been bumped \$1800 609-767-3523 Camden Co

7 tooth Brillion chisel plow depth wheels, high clearance, 3 pt, \$1100; NH 770 chopper for parts 717-776-4261 Cumb Co

1970 Chevy Malibu convertible, \$3000. 610-869-2826 Chester Co

JD 140 Garden Tractor, 14 hp Kohler engine, 48" mower deck, also snowblade w/hydraulic lift, asking \$2000. 814-674-5917 Cambria Co

Travel trailer, 1984, 29' Terry Taurus Fleetwood, AC Fridge, gas hot water stove, available July 610-845-7955 Berks Co.

AKC Boxer pups, 4 males, 4 females, shots and wormed to date Ready 7/8/98 717-445-5704 Lanc Co.

Wheat straw, \$150 bale, or \$90 ton Mt. Joy, Pa 717-653-8837 Lanc. Co.

Year 75 AC gleaner combine M model, 15' grain head, floating head, 6 cyl diesel, new raddle chain, AC gleaner 609-499-0715 Burl Co.

Case 660 combine, 13' head, shed kept, variable speed drive belt for a 960 Case combine, (new), 814-652-9494 Bedford Co.

Ford 311 planter, 4 r, dry fert, shed kept, \$400; Chestnut beams, make offer, foundation stone, \$50, pick-up load, 717-246-7734 York Co.

International 3 bottom plow, 16 in. reset. 717-354-9147 Lanc Co.

Mobile home 12x66 new in 1973, best offer. Near Terre Hill, Lanc. Co. 610-286-9176 Lanc. Co.

JD 1240 plateless corn planter, insecticide boxes, new runners, discs, rebuilt fingers, excellent, \$1500, going no till 814-267-5896 lv mssg. Somerset Co

26 ft. 5th wheel flatbed, 2 axle trailer, good for roll bale hay, \$1500, 5th wheel incl 410-378-2086 Cecil Co.

Heavy power over head garage door 12'x14', 510 JHC 16 disc grain drill, all attachments, good condition. 814-445-4230 Somerset Co

PA type 41 tobacco plants 717-626-0820 Lanc Co

7 Holstein steers, 400 to 600 lb, your choice, 260 cents/lb. 717-664-2060 Lanc. Co

GQF stackable quail layer pens, feeders, automatic watering eggs, roll out front for easy gathering, \$200 ea 717-687-5143 Lanc. Co.

Ear corn, \$100 ton, hay by bale, \$2-\$3, new crop, hay orchard grass and timothy Exit 11 83 717-764-5306 York Co

For sale barley straw, clean & dry 717-627-3567 Lanc Co.

100 gals hydraulic oil tank 160 Birdell Rd, Honey Brook, Pa 19344-8672 Chester Co

36" gas stove/oven, white 4 burners, good shape, clean, \$100 610-265-1110 Montg Co.

**WANTED TO BUY:**  
J.D. Frt. Rnd. Spoke Steel  
Wheels For GP or Cast Frt. for GPO  
**FOR SALE: 6" GP Block and Pistons, head Restored, J.D. AR on Steel, Nice \$3,900.00**  
**717-563-2322**  
Lackawanna Co.

**Diesel Power Systems**  
415 PETERS ROAD GORDONVILLE, PA 17529  
Specializing In  
MID RANGE • HEAVY DUTY  
DIESEL ENGINES  
POWER UNITS  
PTO's  
PUMP DRIVES  
CLUTCH REDUCTIONS  
SALES - SERVICE  
LARGE INVENTORY OF NEW & USED PARTS & ENGINES  
**Used, Rebuilt And Exchange 3208 Caterpillar Engines**

• COMPRESSOR • HYDRAULIC • GEAR • TRANSMISSION • GREASE • 2 CYCLE • BAR & CHAIN • CLEANERS • FULL FLOW, BY PASS & AIR FILTERS • FUEL ADDITIVES  
**For More Information Write to Address Above or Call (717) 354-4801 Service**

**JAY ZEIGLER Standing Seam Metal Contractor**

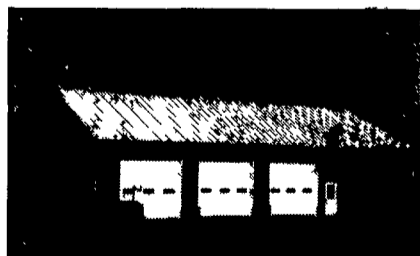
Since 1963 "Simply The Very Best Roof Available"

**FREE Estimates**

**Call For Information**



Use on Barns Or Garages



Light Commercial.



Reroof w/Metal



New Construction

**ADVANTAGES:**

- Roof can last for 100 years - cost efficient
- Can be installed over existing roof (Asphalt, roll roofing, wood shingles)
- Is environmentally safe
- Beauty - colorful (galvanized, 40 lb. terne, terne-coated stainless, and painted steel in over 20 different colors.)
- Can be installed on flat roof with as little as 1/2" pitch per foot.
- Good for homes, farm buildings, garages, commercial buildings.
- Sheet in continuous length installed with concealed fasteners with double lock seam for water tight application.

PO Box 231 Rehrersburg, PA 19550

(717) 933-4666 (717) 933-5305 FAX/PHONE