

# YOUR FARM EQUIPMENT SPECIALISTS



## NEW HOLLAND

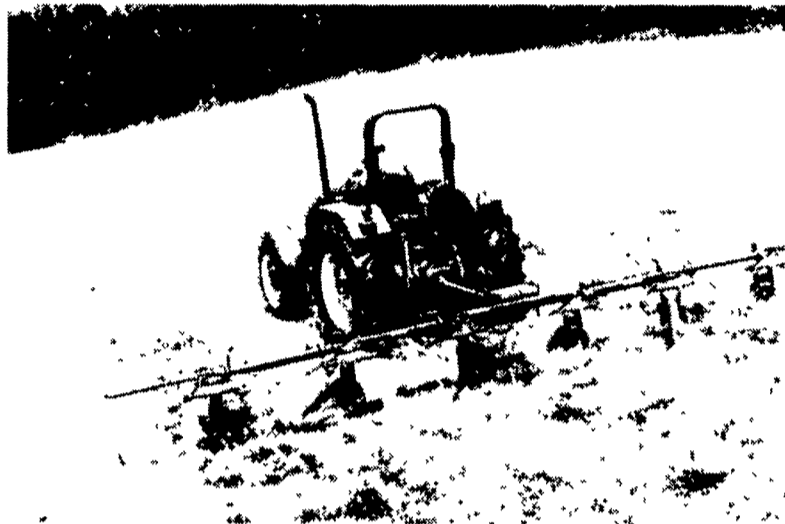
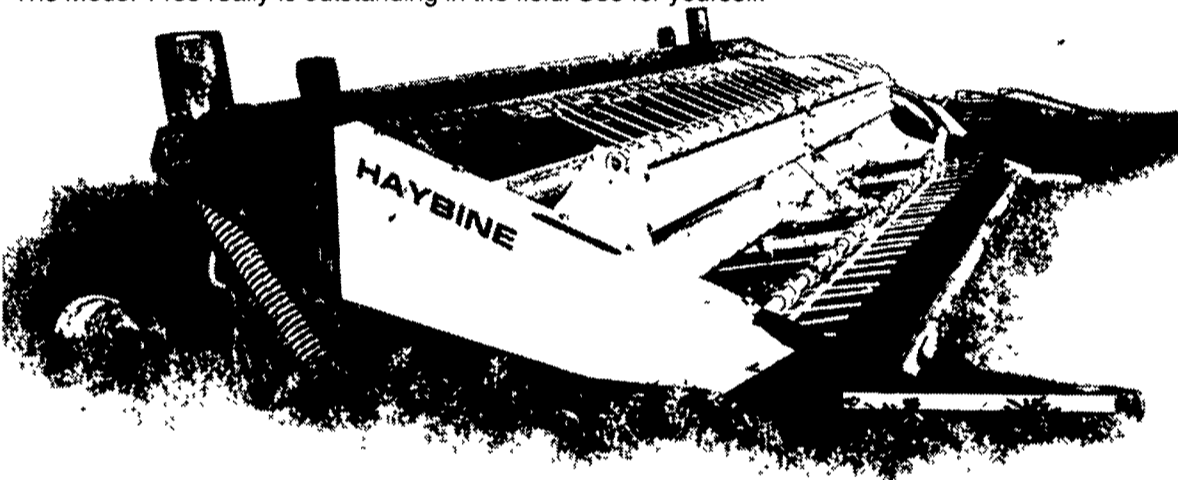
### High-performance Haybine®

The New Holland Model 1465 Haybine® mower-conditioner has a five-bat reel for more uniform crop flow into the nine-foot cutter bar. The "1465" provides fast reaction time to field obstructions and has an enclosed wobble gearbox for smooth, dependable operation.

Other proven advantages include:

- Conditioner roll drives with straight spline telescoping shafts for extra durability
- A spring-loaded reel drive idler for improved performance, added header durability and less maintenance.
- A cutterbar assembly with square back-bar guards, adjustable hold-downs, and a back-hardened knife assembly for long wear and less maintenance

The Model 1465 really is outstanding in the field. See for yourself.



### Fluff 3 windrows in one pass

You'll cover acres fast, and bale or chop sooner with the Model 169 tedder. It uses six rotors to ted a wide 22'8" area. That's wide enough to fluff three windrows from a 9' mower-conditioner. Yet transport width is a narrow 9'8" for easy maneuvering. The frame of the "169" is fully articulated, so it hugs the ground to fluff all of your crop for fast drying.

And the Digidrive® coupling provides smooth, reliable operation.

Beat the weather with the model 169. Stop by for details.



NEW HOLLAND



NEW HOLLAND

### Fast and tough in the field

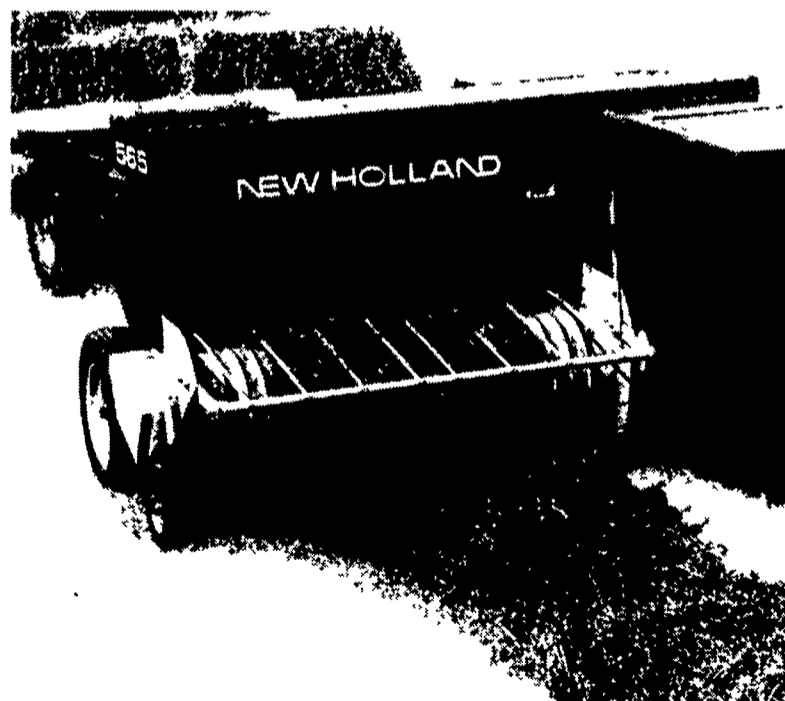
The "565" New Holland square baler... designed to meet your capacity and quality requirements.

- Wide Super-Sweep™ pickup gets all the hay.
- Big feed opening... swallows big windrows.
- Strong feeding system... Flow Action® feeder for long life.
- Strong materials... in bale case and plunger.
- Gear-driven twine system.

The New Holland "565" consistently gives you tight, 14x18-inch bales. But don't take our word for it. Stop in today for a demonstration.



NEW HOLLAND



### Super Boom™ is best

Why choose a New Holland skid-steer loader?

- Superior visibility
- Unbeatable stability
- Faster speeds
- Superior dump height & reach
- Greater bucket & lift capacity
- The most attachments
- Unmatched dependability

Stop by today and see for yourself why no other skid-steer can compare.



Makes it easy to own the best.