

## North Atlantic Shell Eggs

June 11, 1998  
Atlanta, Ga.

PRICES WERE UNCHANGED. THE MARKET TONE WAS GENERALLY STEADY. DEMAND HAD SLOWED AND WAS MOSTLY MODERATE. SUPPLIES WERE AT LEAST ADEQUATE WITH THE LARGER SIZES SLIGHTLY MORE AVAILABLE. BREAKING STOCK SUPPLIES WERE ADEQUATE FOR THE LIGHT DEMAND AND THE UNDERTONE WAS STEADY. OFFERINGS OF SPENT HENS WERE SUFFICIENT FOR FULL SLAUGHTER SCHEDULES.

PHILADELPHIA: PRICES TO RETAILERS, SALES TO VOLUME BUYERS, USDA GRADE A AND GRADE A WHITE EGGS IN CARTONS, DELIVERED STORE DOOR, CENTS PER DOZEN: EXTRA LARGE .66-.69; LARGE .64-.67; MEDIUM .41-.44.

## NY Phil Frozen Eggs

ATLANTA, GA.  
JUNE 05, 1998

\*\*\* CORRECTED COPY - PREVIOUS NARRATIVE INCORRECT \*\*\*

EASTERN REGION FROZEN EGGS, JUNE 05, 1998. FEDERAL-STATE

Prices were unchanged. The market tone was steady. Demand was light to moderate. Supplies remained adequate. Liquid and frozen eggs (ingredients included) processed under federal inspection in the Eastern region for the week ending May 30, 1998 were 10% more than last week, and 2% less than the same week last year. Plants worked at least full schedules.

## WHOLESALE SELLING PRICES (CENTS PER POUND IN 30 LB. CONTAINERS)

TRUCKLOTS LTL (MIN. 25 CONT.)  
RANGE MOSTLY RANGE

WHOLE 45-48 46-47 48-58 BLENDS

(/) TFEWR 57-70 WHITES 35-38 36-37 39-48 SUGARED YOLKS (MIN 43% SOLIDS) 68-73 69-71 74-80 SALTED YOLKS (MIN 43% SOLIDS) 64-70 65-68 71-77

(/) - WHOLE PLUS YOLK PLUS SWEETENER, GENERALLY 28-32% EGG SOLIDS.

## E. PA. & NJ

### Poultry

ATLANTA, GA.  
JUNE 08, 1998

SOUTHEAST HEAVY LIVE HEN REPORT, JUNE 8, 1998. FEDERAL-STATE

Majority prices were slightly lower when compared to a week earlier. Demand was moderate for fully adequate to ample offerings. Processing schedules were seasonal normal. Trade sentiment was generally steady.

HEAVY TYPE HENS (7 POUNDS AND UP) \*

FINAL PRICE, CENTS PER LB., GENERALLY FOR SLAUGHTER THE WEEK OF 08-JUN-98

RANGE MAJORITY WTD AVG  
AT FARM BUYER LOADING 14.5-23.25 CENTS/LB. 17.25-20.5 18.54  
AT FARM PRODUCER LOADING TOO FEW TO REPORT FOB PLANT TOO FEW TO REPORT

\* WEIGHTS UNDER 7 LBS. SUBJECT TO DISCOUNT.

## Belleville Poultry

Belleville, Pa.

Wednesday, June 10, 1998

Report supplied by Auction

Geese: 3.00-4.00 ea.  
Turkeys: 17.00 ea.  
Guineas: 10.00 ea.  
Roosters: 3.50-7.75 ea.  
Bantams: 1.00-3.00 ea.  
Heavy hens: 2.50 ea.  
Silkies: 3.00 ea.  
Muscovy hens: 5.00-7.00 ea.  
Muscovy ducks: 14.00-16.00 ea.  
Mixed ducks: 4.00-5.00 ea.  
Barn pigeons: 2.00 ea.  
White birds: 4.00 ea.  
Fancy birds: 23.00 ea.  
Peacocks: 41.00 ea.  
Pheasants: 4.00 ea.  
Doves: none.  
Quail: 3.50 ea.  
Guinea Pigs: 3.00 ea.  
Rabbits: under 4 lbs. 1.50-4.00 ea., 4-6 lbs. 4.00-6.00 ea., over 6 lbs. 6.00-9.00 ea.  
For more information phone 717-242-2898.

## Delmarva

### Broiler

ATLANTA, GA.  
JUNE 10, 1998

DELMARVA BROILER/FRYER MARKET. FEDERAL-STATE

Movement of ready-to-cook whole birds was noted as mostly fair to instances good. Offerings were in close balance to short on 3 pound and lighter sizes, heavier sizes were fully adequate. Live supplies were moderate with weights ranging desirable to heavy. Processing schedules were moderately heavy. Less than trucklot asking prices were unchanged at 65 to 79 cents.

Lancaster Farming, Saturday, June 13, 1998-A5

Trade sentiment was steady. In the parts complex, breast and leg items were adequate. Wings were adequate to fully adequate.

ESTIMATED SLAUGHTER OF BROILER/FRYERS IN DELMARVA (000)

ESTIMATED ACTUAL AVG. WEIGHT ACTUAL AVG. WEIGHT  
06/10 06/08 06/08 06/03 06/01 2,481 2,495 5.02 2,454 5.02

\*BROILER/FRYER CURRENT NEGOTIATED PRICES FOR IMMEDIATE DELIVERY INCLUDES MOSTLY MULTIPLE-DROP SHIPMENTS OF BRANDED AND WING TAGGED TO NEW YORK CITY FROM DELMARVA BRANDED U.S. GRADE A RANGE 60-89 WEIGHTED AVERAGE 68.62 NO. OF BOXES 6,959

\*7 of 9 plants reporting.

## Hackettstown Poultry & Egg

Hackettstown, N.J.

Report Supplied by Auction

Tuesday, June 9, 1998

Report Supplied by Auction

HEAVY FOWL .70-1.10 LB., 2.50 EA.  
LEGHORN FOWL .80 LB.  
MIXED FOWL .30-.80 LB.  
DUCKLINGS EACH 2.00-3.75.  
CHICKS .25-.75 EA.  
TURKEYS 1.70 LB., 6.00 EA.  
BANTAMS .75-6.50 EA.  
ROOSTERS .20-1.20 LB., 3.50-4.75 EA.  
BUNNIES .50-9.00 EA.  
DUCKS 1.35-3.10 LB.  
RABBITS 1.10 EA., .55-1.25 LB.  
PIGEONS 1.25-3.75 EA.  
GUINEAS 13.00-13.50 EA.  
BROILERS .20-.65 LB.

GRADE A EGGS: WHITE JUMBO .90-.93, EX. LARGE .88-.89, LARGE .65-.73, MEDIUM .40-.50, PULLETS .38. BROWN JUMBO .75-.87, EX. LARGE .78-.83, LARGE .50-.77, MEDIUM .43-.45.

## Leinbach's Hay

Shippensburg, PA

June 6 and 9

Report Supplied by Auction

36 LOADS.  
ALFALFA: 90.00-100.00.  
MIXED HAY: 50.00-107.50.  
TIMOTHY: 72.00-97.00.  
CLOVER: 70.00.  
BROMEGRASS: 47.00-80.00.  
ORCHARDGRASS: 80.00-90.00.  
STRAW: 100.00.  
EAR CORN: 102.50-116.00.  
OATS: 1.65 BU.

## Belleville Hay

Wednesday, June 10

Belleville, PA

Report Supplied by Auction

ALFALFA HAY: 4 LOTS, 65.00-115.00.  
MIXED HAY: 13 LOTS, 70.00-92.50.  
STRAW: 2 LOTS, 100.00-122.50.  
EAR CORN: 5 LOTS, 95.00-102.50.

## Vintage Hay

Paradise, PA

Thurs., June 11, 1998

Report Supplied by Auction

ALFALFA: 106.00-174.00.  
TIMOTHY: 122.00.  
MIXED HAY: 73.00-119.00.  
STRAW: 115.00.  
SALE TIME 12 NOON.

Forney Longenecker  
Vice President/Financial Consultant  
Commodities Only

## SMITH BARNEY

717-295-8914 • 800-441-1997

A Member of TravelersGroup

SMITH BARNEY INC  
29 East King Street  
Suite 200  
Lancaster, PA 17602-2852

## Painting - Sandblasting - Power Washing

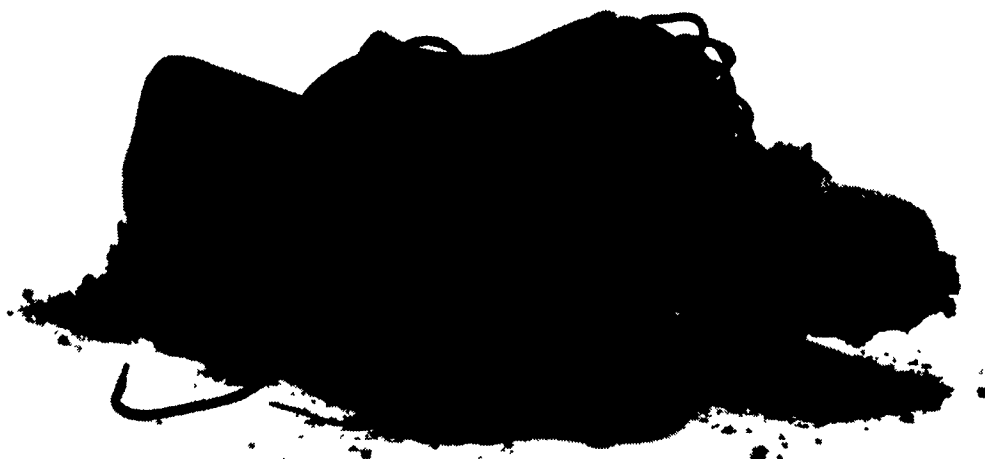
Farm Buildings - Deck - Fences -  
Masonry Walls

Specializing in roof painting & coating

## Amos Fisher

303 Pequea Valley Rd.  
Kinzers, PA 17535  
717-768-3722

# Out standing in your field.



The Agri-specialists from Farmers First aren't a bunch of deskbound bankers waiting around for the phone to ring. We get involved with you. Right where you live and work. We lend the money farmers need to keep growing.

And, we can help your business in a lot of other ways, too.

We talk the talk. And we walk the walk.

(wherever that might lead us)

## The Agri-specialists

# FARMERS FIRST BANK

A SUSQUEHANNA BANC

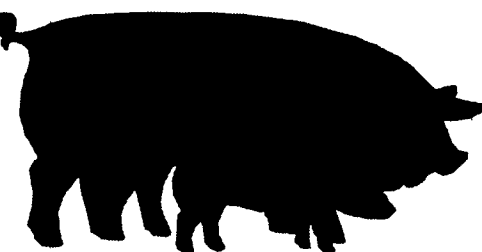
Member FDIC



ANDY TERRELL  
(717) 626-4735  
EXT. 264



JAY HERSHEY  
(717) 768-8256



- MARKET HOGS
- BOARS
- SOWS
- CULL PIGS

## GOOD'S LIVESTOCK, INC.

Monday 6:30-11:00 A.M.

Friday 6:30-10:00 A.M.



Route 897 • 1 Mile North of Fivepointville, Denver, Pa  
(717) 445-5776 • Fax (717) 445-6963

## Pennsylvania Agricultural Commodities Marketing Association, Inc.

FORWARD PRICING



FEED INGREDIENTS

Corn  
Soybeans  
Wheat  
Soybean Meal  
Cottonseed

Soybean Meal  
Distillers Grains  
Hominy  
Cottonseed

Hogs  
Cattle

CASH GRAIN MARKET

Feed Grains  
Wheat  
Oilseeds

RISK MANAGEMENT

Hedging Services  
Market Consultation  
Min./Max. Contracts  
Specialized Contracts

A privately held full service commodity merchandising firm.

Call today to see how PACMA can broaden your marketing efforts whether you're BUYING or SELLING Agricultural Commodities

Rail Facilities are available at Green Castle & Palmyra, PA  
475 East High Street, Palmyra, PA 17078  
800-PACMA Inc. • 717-838-7050

1-800-722-6246

Started by Producers for producers

