

# Woodcrest Motors

SPECIALIZING IN TRUCKS & VANS

1200 North Reading Rd., (Rt. 272) Stevens, (Lancaster Co) PA 17578  
717-336-3130



91 FORD F250 EXT CAB XLT, V8 AT, A/C, Most Options, 8600 GVW 81,000 Miles



95 FORD CLUB WAGON XLT 7.3 Power Stroke Diesel AT Dual A/C, PW, PL, 15-Passenger, Alum Wheels, 66,000 Miles



94 DODGE RAM 3500 Handicap Van, V8, AT, Dual A/C & Heat, Wheelchair Lift, 79,000 Miles, Dk Blue



(2) 92 GMC TOP KICK Lo-Pro 366 V8 Gas, AT, PS, PB, 79,000 Miles



94 FORD CLUB WAGON V-8, AT Dual A/C & Heat, 12 Passenger 54,000 Miles, Lt Blue

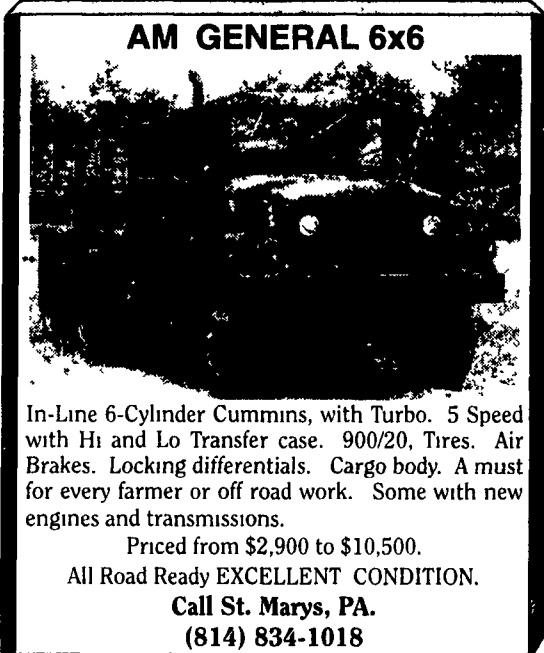


95 DODGE RAM 2500 4X4 SLT Laramie, Cummins Turbo Diesel, AT, A/C, Most Options, 24,000 Miles, Green



1972 GMC Compost Truck with Model 110 Prentice Hydraulic Loader. Loader equipped with auxiliary American V-M Diesel, 4 Cylinder Engine. \$7,500.

(610) 268-8735



## AM GENERAL 6x6

In-Line 6-Cylinder Cummins, with Turbo. 5 Speed with Hi and Lo Transfer case. 900/20, Tires. Air Brakes. Locking differentials. Cargo body. A must for every farmer or off road work. Some with new engines and transmissions.

Priced from \$2,900 to \$10,500.

All Road Ready EXCELLENT CONDITION.

Call St. Marys, PA.

(814) 834-1018

- 1996 Chevy Silverado Ext. Cab, 4x4, Short Bed, V8, AT, AC, PW, PL, Alloys, Black/with Grey Int., 14,000 Miles Only \$21,900
- 1996 Dodge Ram 1500 4x4, Short Bed, SLT 360, AT, AC, PW, PL, 41,000 Miles, Wheel, Maroon/Silver. \$18,900
- 1997 Ford F150 XLT Ext. Cab, Short Bed, Step Side, 2WD 4.2 Ltr. 5 Sp., PW, PL, 2WD Black, Alloys, 46,000 Miles, Cheap Truck. \$15,900
- 1995 Ford Ext. Cab 250 XL Heavy Duty, 300 6 cyl., AT, AC, High Miles, But Drives New, Was \$10,700. Now Only \$9,900
- 1972 Chev C-20 2WD 3/4 Ton 4 Sp., 350, Only 77,000 Miles, Local Owner, Decent Truck. \$3,500
- 1993 Chev. Silverado Reg. Cab, 4x4, V8, 5 Sp., AC, PW, PL, Alloy, Push Bumper, Tarp, Dual Exhaust. Only \$15,900
- 1990 Ford 150 4x4 AT, AC, V8, 72,000 Miles, New Exhaust, New Tires, Matching Topper, Local 1 Owner. \$8,900



(717) 949-6513

- 97 Ford F-150 Ext-Cab XLT, 4x4, White, 4.6 V8 A/T, AM/FM/Cas, AC, PW, PL, CC, Tilt, Airbags, Keyless Entry, 33,210 mi \$22,500
- 96 Dodge Dakota SLT, 4x4, Ext Cab, Magnum, Black/Gray, V8, A/T, AM/FM/Cas, AC, PW, PL, CC, Tilt, Airbag, 43,585 mi. \$16,900
- 96 Ford F-250 XLT, 4x4, Green, 351 V8, 5 spd, AM/FM/Cas, AC, PW, PL, CC, Tilt, 8600/GVW, 33,355 mi. \$18,900
- 96 Ford Bronco XLT, 4x4, White, 302 V8, 5 spd, AM/FM/Cas, AC, PW, PL, CC, Tilt, Airbag, 67,360 mi. \$14,900
- 96 Ford E-150 Cargo Van, White, 300, 6 cyl., AT, AM/FM/Cas, ABS, 66,690 mi \$11,900
- 95 Ford Aerostar Cargo Van, White, 3.0 V6, AT, AM/FM St., A/C, Airbag, 73,550 mi. \$7,900
- 95 GMC Jimmy SLT, 4 dr., 4x4, Vortec, Black, 4.3 V6, A/T, AM/FM/Cass, PW, PL, CC, Leather Int., Keyless Entry, Pwr Seat, Phone, Airbag, 50,075 mi. \$14,900
- 95 Chevy Astro CS, AWD, 7 pass., Silver, 4.3 V6, AT, AM/FM/St, AC, PW, PL, CC, Tilt, Airbag, 63,460 mi. \$11,900
- 95 Jeep Wrangler Sport Softop, 4x4, Black, 4 cyl., AT, AM/FM/Cas, Tilt, 43,170 mi \$10,900
- 94 Ford Clubwagon XLT, 8 pass., Green, 302 V8, A/T, AM/FM/Cas, AC, PW, PL, CC, Tilt, Dual Heat, Airbag, 138,065 mi. \$8,900
- 94 Dodge Ram 2500, 4x4, Cummins Turbo, Black, Diesel, A/T, AM/FM/Cas, AC, 104,825 mi. \$12,900

**Brubaker's Auto Sales**  
Myerstown, PA  
717-866-5237

## "THIRSTY"?

**"Quench It"!**  
**International VOF**  
Gas T/A Tractor, P/S with 5,000 Gallon Heil water Tank  
Former Fire Co. Truck  
Looks and Runs Great  
**\$4,990**  
Call Ray 609-424-6300

PRE-OWNED CARS	PRE-OWNED TRUCKS	PRE-OWNED MPV'S
'94 PONTIAC FIREBIRD A/C, 5 Speed, Bright Red	'89 FORD F250 XLT 6600 GVW, Light Duty, 6 Cyl., 5 Spd., AM/FM/ Super Clean	'96 CHEVY BLAZER LS A/C, Auto, AM/FM Cass., Local Trade, Sharp!
'96 FORD TAURUS GL A/C, A/OC, PDL, PW, AM/FM Cass., Power Seats, Beautiful Rose	'96 FORD RANGER XLT 6 Cyl., Auto., AM/FM Cass., One Owner, Priced To Sell	'95 FORD WINDSTAR GL A/C, Auto., AM/FM Cass., 3 to Choose From
'96 FORD CONTOUR Sdn., A/C, A/OD, AM/FM Cass., 3" to Choose From - Must See	'97 F-150 4x4 XLT V-8, A/OD, A/C, Power Equipment	'93 FORD EXPLORER SPORT 4x4, A/C, Auto, AM/FM Cass., Must See - Super Clean
'96 LINCOLN TOWN CAR Signature Series, Fully Loaded with Luxury, 3 to Choose From	'94 FORD F-150 4x4 Supercab, V-8, A/C, A/OD	'94 FORD BRONCO EB 4x4, A/C, AutoD, AM/FM Cass., Fully Loaded
'93 TAURUS GL WAGON 3.0L, A/OD, A/C, 53,000 Miles	'96 F250 4x4 A/OD, A/C, 7.3L Diesel & More	'95 WINDSTAR LX Front & Rear A/C & Heat, 30,000 Miles
'89 MAZDA RX-7 A/C, 5 Speed, 69,000 Miles	'90 FORD F-150 S/CAB XLT A/C, AM/FM Cass., Auto Lots of Extras	'95 JEEP WRANGLER 5 Spd., AM/FM Cass., 4 WD Hard Top, Super Clean, Fun to Drive
'95 LINCOLN CONTINENTAL Sunroof, Luxury, 8 Cylinder Fun To Drive	'93 RANGER XLT V-6, Extended Cab, A/C, 5 Speed	'95 GEO TRACKER 4x4 LSI A/C, Auto, AM/FM Cass., Convertible, Fun to Drive
'95 MERCURY SABLE GS SDN A/C, A/OD, AM/FM Cass., Super Clean, Well Taken Care Of	'94 DODGE 1500 ST 4x4, Auto, V8, A/C, AM/FM Cass., Super Clean	'95 JEEP GRAND CHEROKEE 4x4, Laredo, A/C, Auto., AM/FM Cass., 5 To Choose From
'96 PONTIAC SUNFIRE SE A/C/S, 5 Spd., AM/FM Cass., Only 12,000 Miles, One Owner	'95 CHEVY C1500 WT A/C, Auto, AM/FM, Dependable Work Truck	'95 JEEP CHEROKEE COUNTRY 4X4, A/C, Auto., AM/FM Cass., A Must See
'94 CHEVY CAVALIER CONV. Rare Beauty With V-6 Engine	'93 FORD F350 CREW CAB XLT Diesel Turbo, A/OD, Lots of Extras, Super Clean	'92 CHEROKEE LAREDO 4.0L, AT, AC, 63,000 Miles

# ENGLE-RISSINGER AUTO GROUP

Midway Between Halifax And Millersburg • 717-896-3421 • 1-800-242-8075  
HOURS: Monday-Friday 8:30 AM - 8:30 PM; Saturday 8:30 AM - 3:00 PM

**12' Reefer Body,**  
under body refrigeration unit, Uses 220 electric Has damage

**3- 40' Steel Flatbed Trailers**  
with sliding tandems all in good condition

**1981 Volkswagon Rabbit**  
Diesel 4 Spd 177 354 Mi  
2 Door Needs Driver Side Fender

**1973-75 Mack Cement Mixers**  
10+11 Yard Barrels 6 Spd., + 13 Spds 44+  
55 000 Lb Rears All Runs Excellent  
Asking \$8,500

**1993 Toyota Pickup**  
4 Cyl 5 Spd Trans AM-FM Radio, A/C Excellent Condition, High Mileage

**1977 Mack R Model tractors,**  
300 engine, 5 spd, 38,000 lb rears, power steering

**1500 gallon Sludge Tank**  
w/2cyl Deutz Diesel

**Aluminum Tanker/Trailers**  
7500 gal and up

**New flatbeds available**  
Sizes currently available are 12, 14 20 22 and 24 Racks are also available

**19' NEW Lumber Body**  
w/Ratchet Tie-Downs w/Dumping Hoist  
**4 I-Beams**  
49 Long, 28" High w/12-1/2" Web

**International Industrial Loader**  
4cyl Diesel engine, runs good

**Expanding Business Looking For Mechanics & Mechanics Helpers CALL FOR DETAILS!!**

**Wm. Cohen & Sons**  
**Thorndale, PA**  
(610) 269-1298  
Call between 7 am - 4:30 pm

1976 GMC Motorhome Edgemount 455 V-8 engine, FWD, 26 Long 3 spd trans 4 beds bathroom kitchen needs work  
Hundreds of Used Truck Tires For Sale Sizes from 18" to 24"

1979 Crane Carrier Cement Mixer, 10 Yd Rex Mixer, 230 Cummins 8 Spd Trans 44,000 Lb Rears Asking \$8,500

Used Overhead Door For Sale 16'H x 14'W Asking \$550

Aluminum Loading Ramps 9 & 10 also some other sizes available  
Yale Electric Hoists 1/2 ton cap., 440 volt single and three phase Asking \$350/ea.  
Pedestal Grinder Baldor 2 Hp., 3 phase, 220 amps  
Toledo Scale 1 000 lb Capacity  
Oil Heaters 250,000 BTU s