

MISCELLANEOUS TRUCK PARTS

(Used & Rebuilt)

- Detroit Diesel
- Misc. Transmissions & Rears

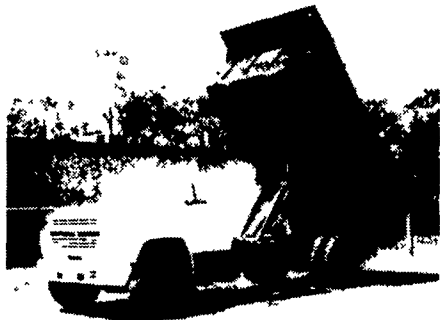
John D. Bohr, Inc.

470 Palmyra - Bellegrove Rd.,
Annville, PA 17003

717-867-4631 or 800-233-0520

TRUCKERS

27' RATCHETS.....\$15.95
WINCH STRAPS.....\$12.95
RUBBER T. STRAPS...54¢
COMPLETE ROLL TARP SYSTEMS
TIRONIE TARPS
(800) 874-2928 • FAX: (717) 584-3127



1986 F700, 89,000 m, 28,000 GVW, 16
ft Stake Dump, good shape, \$9500 OBO
215-547-4628

LEED TRUCK CENTER

402 South Chiques Rd
Salunga Exit, Route 283

717-898-1200



86 IHC S1654
7.3 Liter 5 & 2 Spd P/S No CDL
Needed 25,000 GVW 18 Flatbed
With Sides
Priced To Sell



1986 IHC S1654
7.3 Liter 5 Spd P/S Hyd Brakes
23,000 GVW No CDL Needed 18
Van Body Clean
Call For Details



81 FORD LN8000
3208 CAT Diesel 5&2 spd P/S A/B
31,800 GVW 20 C&C New Paint &
Insp Clean
Reduced To \$6,500



85 IHC S1654
Low Pro 6.9 Liter 5 Spd P/S Hyd
Brakes No CDL Needed 20,500
GVW 15 Van
Call For Details

1979 Ford 7000

tractor, S/A.

1994 Hillsboro

28' Gooseneck

Trailer,
Beaver Tail,
Dual Wheels.

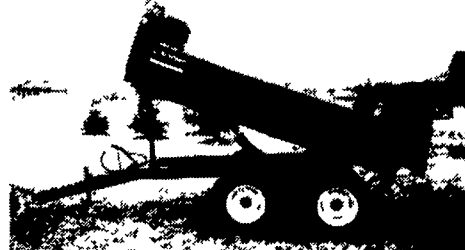
(610) 444-1651



96 Kauffman Gooseneck Trailer, 14,000
GVW, Radial Tires, 20'x5'
Fixed Beavertail
\$3,250
717/336-7375
No Sunday Calls

FARM DUMP TRAILERS

(Direct from the Manufacturer)

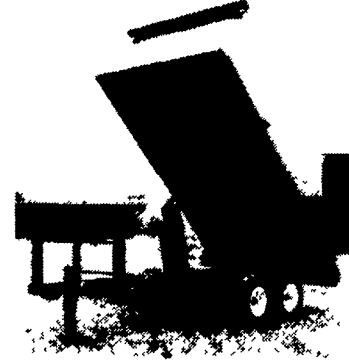


6-Ton Dump Trailer

- 10 ft. x 7 ft.
- Floating Tandem Axle
- 3 ft. Front, 3 ft Tailgate &
Grain Chute
- 16 in Extendable Sides
- 10 ga Floor & Sides
- 11Lx15 Flotation Tires
- 2-Way 4 in x 24 in
Hydraulic Cylinder

7-Ton Road Dump Trailer

- Fifth wheel or bumper type
- 16 ft x 8 ft deck 3 ft front rack and
pockets side & back
- D C. hydraulic pump & battery
mounted in locking tool box
- 12 ton drop leg jack
- 10 ga. floor
- 6x3x3/16 tube main frame
- Sealed beam lighting
- 7000 lbs per axle rating
- Electric brakes on both axle
- 16" tires on white spoked rims
- \$6400 U S delivered in Northeast
U.S.A.



BERKELMAN'S WELDING

RR 7, AYLMEER, ONTARIO, CANADA N5H 2R6

(519) 765-4230

Best Buys in Used Equipment Used Trailers

- 1) **UM 3473** - General 9 Dow Tri-Axle 16' Deck,
Tag-Along
- 2) **UM 3656** - Southeast Skidloader Trailer with
New Axles & Wheels & Tires
- 3) **UM 3712** - McElrath 16' Grain Trailer with
Hay Gate on Rear, Platform Over Deck for Hay
Vac - Hyd Brakes, 20,000 GVW, Used Very
Little, Like New, **\$14,000**
- 4) **NE 4738** - Demonstrator Eager Beaver 35
Ton Detachable 35 SLGS Trailer Air Ride with
Broomwell, Wet Line and Side Channel,
Reinforced from Factory - **\$30,958.**

Gooseneck Trailer



Tandem Axle, 16' Deck
with 3' Beaver Tail,
10,000 GVW
Ask For Dean

9 Ton Eager Beaver Trailer



UM 3823
3 Axle with 16' Deck and
42" Beaver Tail - **\$2,600**
Ask For Dean

1989 Model 10,000 GVW Trailer



UM 3824
Tandem Axle Lamco
with G78-15 Tires,
16 Foot Deck Plus
3 Foot Beaver Tail
Ask For Dean
Worth The Price! **\$2,600**

Eager Beaver 10 AP Skid Steer Trailer



10,000 GVW Tandem
Axle with 14' Deck and 2'
Beaver Tail Lower
Clearance Easy Load

Used Truck Bodies

- 1) **UM 3786** 22' Flat Bed, Wood Floor, **\$600 Ask
For Dean**

BINKLEY & HURST BROS., INC.

(717) 626-4705

133 Rothsville Station Rd
P.O. Box 0395 Litzle PA 17543 0395
Located 1/2 Mile North of Rothsville

1-800-414-4705
Fax 717-626-0996

Melard's Truck & Auto Sales

1289 Division Hwy.
Ephrata, PA 17522
Specializing in Mini Vans
(717) 738-4870

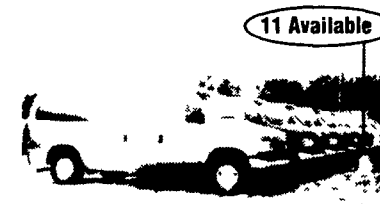
- 1996 Dodge Grand Caravan SE, 3.3 Auto, Air,
Cruise, Cass, Privacy Glass, Tilt, Elec. Locks/
Windows, Silver Fern, 64,000 Miles.....\$14,500
- 1995 Plymouth Grand Voyager SE Rally, 3.3
Auto, Dual Air & Heat, Elec. Windows/Locks,
Cruise, Tilt, Cass, Privacy Glass, 48,000
Miles, Black.....\$13,900
- 1995 Dodge Grand Voyager SE 3.3 Auto, Air,
Cruise, Tilt, AM-FM Cass, Elec. Windows/
Locks, Privacy Glass, 64,000 Miles,
Maroon.....\$11,900
- 1995 Ford Aerostar XLT 4.0 Auto, Dual Air &
Heat, Elec. Windows/Lock, Cruise, Tilt,
AM-FM Cass, Privacy Glass, 33,000 Miles
Black.....\$13,500
- 1994 Plymouth Grand Voyager Sport 3.3 Auto,
Air, Cruise, Tilt, AM-FM Cass, Elec. Windows/
Locks, Privacy Glass, 59,000 Miles,
Black.....\$11,500
- 1992 Mazda MPV V6 Auto, Air, Elec,
Windows/Locks, Cruise, Tilt, Privacy Glass,
53,000 Miles, Dark Blue.....\$9,500
- 1994 Pontiac Grand Prix SE 2 Dr, 3100, Auto,
Air, Cruise, Tilt, Elec. Windows, Locks,
Steering Wheel Radio Controls, 42,000
Miles, Green.....\$10,500
- 1994 Geo Metro 4 Dr, 5 Speed, Air,
44,000 Miles.....\$4,400
- 1993 Ford Tempo 4 Dr., 4 Cyl., Auto, Air,
85,000 Miles, Teal.....\$3,900
- 1990 Chevy Extra Cab 4x4 Silverado 350,
Auto, Air, Elec Windows/Locks, Cruise,
Tilt, AM/FM Cass, 65,000 Miles, Local Trade,
1 Owner, Blue.....\$12,500
- 1994 Chevy Astro Ext. 4.3 Auto, Air, Cruise, Tilt,
Privacy Glass, 58,000 Miles, Black.....\$10,900
- 1995 GMC Safari Ext. AWD, 4.3 Vortex Auto,
Dual Air & Heat, Priv Glass, Elec Windows/
Locks/Seats, Cruise, Tilt, AM/FM Cass,
45,000 Miles, 2-Tone Teal.....\$15,900
- 1995 GMC Safari Ext. AWD, 4.3 Vortex Auto,
Air, Elec Windows/Locks, Cruise, Tilt,
AM/FM Cass, 42,000 Miles, Tan.....\$14,900
- 1996 Ford Aerostar XLT ETD AWD, Auto, Dual
Air & Heat, Elec Windows/Locks, Cruise,
Tilt, AM/FM Cass, Priv Glass, Child Seats,
49,000 Miles, Green.....\$14,500
- 1993 Chevy Blazer Tahoe, 4x4, 4.3 vortec, auto,
air, cruise, tilt, electric windows/locks/ seats,
sun roof, dark glass, AM/FM cass.,
73,000 Miles, maroon.....\$11,900
- 1993 Honda Accord LX, 4 cyl, auto, air, cruise, tilt,
electric windows/locks, 68,000 mi.,
white.....\$10,900
- 1987 Dodge Caravan LE 2.6 auto, "warm air"
elec windows/locks, cruise, tilt, 117,000
miles.....\$2,000
- 1991 Ford Ranger extra cab, 3.0 V6, automatic,
air, 84,000 miles.....\$5,995



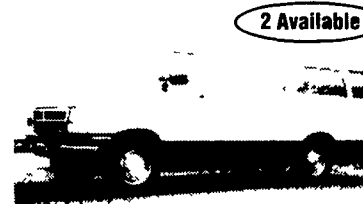
1993 Ford E150 XLT, 8 Pass, 302 V8,
AT/OD, Dual AC & Heat, Tilt &
Cruise, PL, PW, 89K Mi #2651



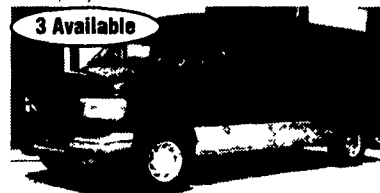
1995 Ford E350 Super Cargo High
Top 351 V8 AT/OD, PW, PL, 9400
GVW, Shelving, 36K Mi #2577



1997 Ford E150 XLT, 8 Pass Triton
V8, AT/OD, Dual A/C Heat, PW, PL,
Tilt, Cruise, Privacy Glass, 26K-29K
Mi. \$18,900



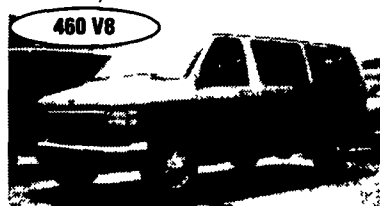
1996 & 97 Dodge B3500 SLT, 15 Pass
360 V8, AT/OD, Dual A/C & heat,
privacy glass, PW, PL, Tilt, Cruise,
25K & 46K Mi.



1997 Ford E150 Chateau 5.4 Triton V8,
AT/OD, Dual AC & Heat, Privacy
Glass, Tilt, Cruise, PL, PW, Captains
Chairs, 21K Mi Also 95 & 96
available, #2679



1997 Dodge B2500 SLT 8 Pass., 318
V8, AT/OD, Dual A/C & Heat,
Privacy Glass, PW & PL, Tilt, Cruise,
19K-30K mi



1996 Ford E350 XLT, 12 pass, 460 V8,
AT/OD, Dual A/C & Heat, Privacy,
Tilt, Cruise, PL, PW, 65K mi #2669



1997 Chevy G1500 Express LS, 350
V8, AT/OD, Dual A/C & Heat,
Privacy Glass, PW, PL, Tilt, Cruise,
57K mi., #2571

Specializing In Vans

Four Way Auto Sales

770 W. Main New Holland, Pa. 17557

717 354 3199

717 355 0625 FAX

Toll Free 1-888-847-8029 Many Other Vans In Stock