

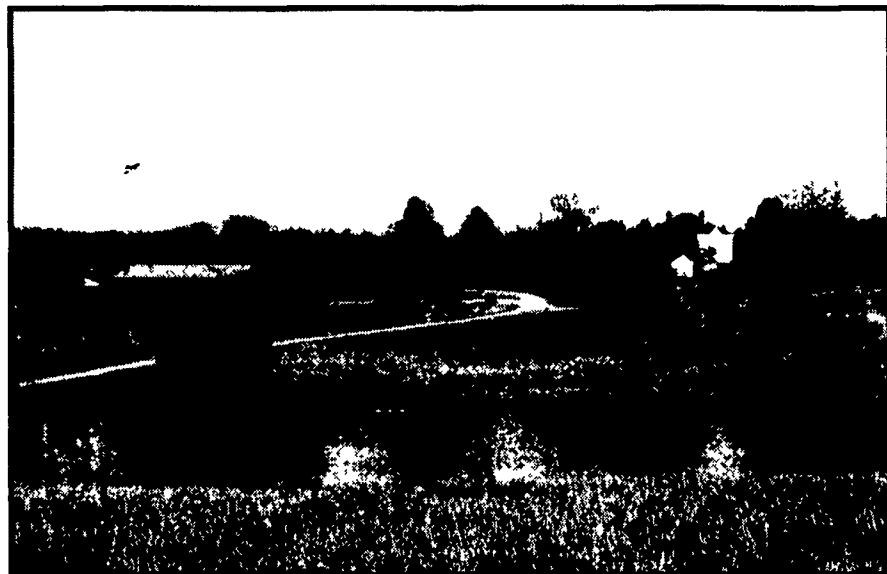
REAL ESTATE AUCTIONS

WOUNDED KNEE FARM CHARLOTTESVILLE, VA

Owned and developed by Worrell Land & Cattle for 20 years, "Wounded Knee" includes over 1,000 acres, 5 homes, show barns and stables, an old country store, and beautiful private lakes and building sites - selling in 21 separate tracts. Also selling are the famous registered Limousin and Belted Galloway cattle - all equipment, tools and machinery - and two homes of antiques, collectibles and furniture.

This is a remarkable showplace property with miles of year round streams, pristine lakes and valleys and wooded hillsides offering complete privacy and abundant wildlife, less than 20 miles east of Charlottesville and 50 miles from Richmond. Located just off Hwy 15, south of I64/Hwy 250 and less than ten minutes from Lake Monticello and Marina near the Rivanna River, golf courses at Glenmore and Laurel Ridge; and the city of Palmyra. Though offered in separate parcels, buyers may combine any tracts desired when they are the high bidder to create the perfect sized estate.

Directions: I64 to exit 27 (Zion Crossroads), 2.8 miles south on Hwy 15 to Rt 631 (6 miles north of Palmyra), west and north 1/2 mile to Farm entrance on left Drive-by land at your convenience Register for Open Houses on Sundays at Main Home, Tract 1



Sells 12:00 pm Wednesday, July 1 at Tract 1 * Open for Viewing 2-4pm Sundays June 14, 21, 28th

LIMOUSIN

The final dispersion of the Worrell Land and Cattle Company, one of the foundation herds of the Limousin breed. Selling 14 females, 10 calves and 2 bulls, featuring the sale of Wulf's Ebony 6503U, record selling cow of the breed. Four of her daughters and four granddaughters sell, many by WLCC Major Domo. Also selling four embryo sisters by Major Domo out of Express Ranches donor female WLCC Arapahoe 3A.

BELTED GALLOWAY

Selling 1 herd bull, 25 Galloway cows and 20 calves, most daughters and granddaughters from the Aldermere herd, the oldest continuous Belted Galloway herd in the country. Microwave.

APPLIANCES & MISC.

Toaster oven
Wooden clothes dryer
RCA television
Sharp VCR
Freezer
Refrigerator
Coffee grinder
Carving set
Serving platter
Knives - Steak, Antler Handles,
Carved Handles, Shingle, Corn,
Sugar Cane
Misc dishes, utensils, etc

EQUIPMENT

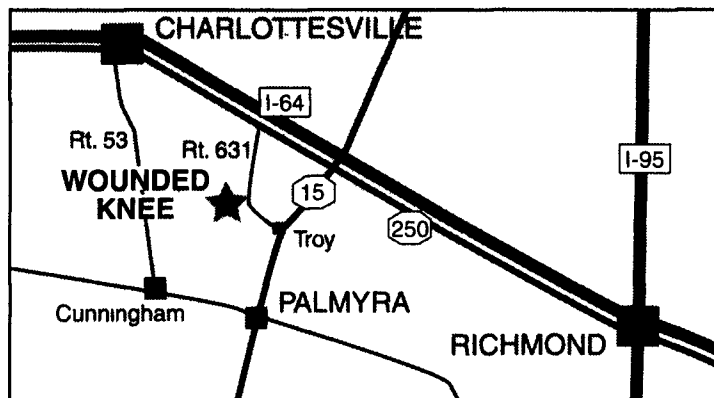
JD 2955 tractor
Int'l 464 tractor
JD 430 round baler
JD 1550 power till seeder
JD hay elevator
JD 115 hydraulic blade
JD AMT 4 x 6 gator,
Int'l 420 2 bot plow
Super Chief 420 3 bot plow,
Heston round baler mover
Athens 83 disk
Chain harrow
Danuus post driver
(4) Farm wagons
480 battery charger
Toro 220 mower,
1989 F150 Ford truck
1990 Adams trailer
NH 273 square baler
NH 256 hay rake
NH 263 trail tedder
NH 492 9' haybine
NH 451 sycle bar mower
Akey M50P manure spreader
7' Bush hog
Scraper blade
SS-961 Brillion 8' pull seeder
Mid West boom fork
Danuser M51 log splitter
EZEE Flow fertilizer spreader
Ferguson hydraulic bale unroller
Pittsburgh 5' rotary cutter
Ford 7' scraper blade

CATTLE EQUIP.

Paul scales
Paleo loading chute with panels
Complete set WW
Corral
Hoof trimming table
Powder River catch chute & panels
(3) Creep feeders
(2) Show barn chutes
(2) Handi Clasp chutes
(2) Semen tanks
(4) Fans
Set of show boxes
Sets of clippers
Assortment of livestock show equip

ANTIQUES, FURNITURE, & PAINTINGS

(2) quilt stands (cherry & oak)
Oak window bench
(2) washbowls & pitcher, wash stand
(2) wooden mirrors
Pie safe, Fruit press
(2) magazine racks, (2) trunks
(2) Floor lamps, floor ash tray
Arrowhead collection, Bear hide/trap
Gram rake, bellows
Misc bottles
African spears
Antique work bench
Sleigh bells & (3) cow bells
Shaving horse
Flour chest, Heavy pine table
Meat saw & (2) meat cleavers
Wooden wash basin, Wood box
Apple picker
Steel target
Maple hutch
Oak sideboard, buffet china cabinet
Oak table w/six chairs, (2) oak tables
Maple tea cart
White oak kitchen table & 3 chairs
(14) cane bottom chairs
(2) split oak bottom chairs
Leather bottom rocker
Oak/wicker chair
Ladderback rope chair
(2) recliners
Overstuffed chair
Drop leaf table
Pine coffee table, (2) Pine tables
Spanish cabinet
Antique oak dresser w/mirror
Dropleaf chest, Blanket chest
Rope bed
(2) Maple beds, (2) iron beds
Oak bunk beds
(4) Maple dressers & (2) night stands
Pine night stand and wardrobe
(2) Maple mirrors
Bentwood dresser & mirror
Beautiful selections of paintings and prints, including paintings by R. Beason *Rural Scene, Cades Cove Cabin, Flowers Refuge, Child and Child w/doll* as well as *Scenes* by Gerald Langford *Boy Indians & Buffalo Plowing, Dogs, Cows By River* and many others.



ALSO SELLING EQUIPMENT, MACHINERY, & TOOLS

1986 JD 2950 4wd 85hp tractor w/cab
1990 JD 2955 4WD t 85hp tractor w/JD 265 loader
1984 JD 4040 85hp tractor
AC WD45 Collectible tractor
(4) 18" bottom auto reset white plows
MF 12' Disc
20' fold-up disk harrow
JD 4-row #7,000 corn planter
Stone picker
MF 18-hole grain drill
14' cultipacker
3pt hitch fertilizer spreader
NH 790 field chopper w/2-row corn head & pick-up head
(2) self-unloading wagons
JD 256 blower
JD 327 hay baler with thrower
NH 256 hay rake
(4) hay wagons with running gears
JD 1360 discbine mower (5 yrs old)
36 Allied hay conveyor
NH 306 manure spreader
Pull-type AC combine (works)
Gehl 7,200 flail chopper
Lots of misc parts and inventory

COMPLETE DISPERSION CHAPMAN VIEW FARM MONTGOMERY COUNTY, NY

30 minutes west of Albany, at Charleston Four Corners (between I-90 and Hwy 20), a scenic old dairy farm, selling in 11 tracts from 10 to 100 acres each. Beautiful rolling pastures with home and barns, private woodlands and several tracts bordering pristine state lands.

Tract 1 - 55 acre woodland property with some fields and private access at end of Humphrey Rd. Electric to site and private lane, could be excellent private country estate.

Tract 2 - 46 acre sister property to Tract 1 (across private lane).

Tracts 3 & 4 - 26 and 30 acres. Gently rolling meadows with woodland bldg sites.

Tracts 5 & 6 - 30 and 47 acres, mature woodlands.

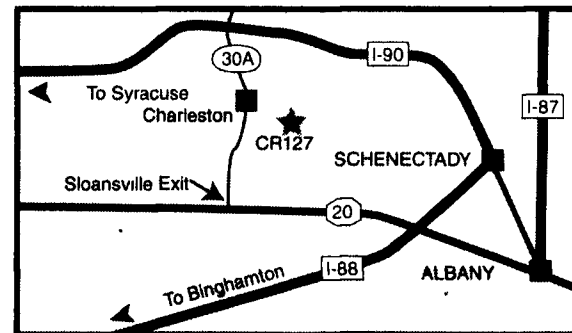
Tract 7 - 40 acres. Woodlands and meadows with stone fence and valley with brook.

Tract 8 - 46 acres with small garage/barn. Woodlands, small field, and stream.

Tracts 9 & 10 - 75 and 45 acres with meadows, and hilltop building sites.

Tract 11 - 65 acres with 4 Bdrm, 1 Bath frame country home with cut stone fireplace, antique cook stove and wood burning stove (sell separately), 38'x180' barn (67 dairy stalls - all equip. sells separately), 40'x72' equip shed, 2 story multi-purpose barn, 22'x40' shop w/heat, and 2 cement stove silos.

Directions: Hwy 20 west of Albany/Schenectady to Sloansville exit, north on Rt 30A to Davis Corner, east on CR127/Goewey Rd. for 2.2 miles to property.



Sells 11:00 am Tuesday, June 30 at Tract 11 * Open for Viewing 2-4pm Sundays June 21, & 28th



Williams & Williams
REALTORS

Uncommon Marketing for Distinctive Properties
7666 E. 61st * Tulsa, OK 74133 * (918) 250-2012
VA AUC T #2907002556 NY RI #694819



PHONE FOR BROCHURE
(918) 250-2012, EXT. 0