

**Central Carlot
Pork Report**

DES MOINES, IOWA
Wednesday, June 3, 1998

USDA NATIONAL CARLOT PORK REPORT Equated to FOB Omaha Basis as 3:00 P.M.

Compared to Tuesday's Close: Fresh bone-in 13-19# loins mostly 2.00-4.00 lower; butts weak to 5.00 lower; sknd. hams bone-in hams 3.00-7.00 higher; adls. bellies 12-14 lbs. steady to 3.00 higher; lean trimmings 1.00-2.00 higher. Trading moderate to active, with light retail demand on moderate to heavy offerings, while demand for processing items moderate on light offerings.

Loads PORK CUTS : 123.25 Loads TRIM/PROCESS PORK : 15.5 USDA ESTIMATED COMPOSITE PORK CARCASS CUTOFF Based on FOB Omaha carlot pork prices and industry yields.

Calculations for a 185 lb Pork Carcass 51-52% lean, 0.80"-0.99" backfat at last rib Total Today's Primal Composite Values Date Loads Cutout Loin Butt Pic Rib Ham Belly 06/03 138.8 63.21 92.97 69.33 33.36 133.95 48.77 60.65 Change : 0.19 -3.06 -2.76 2.28 -3.22 2.80 2.69 06/02 153.8 63.02 96.04 72.09 31.09 137.17 45.96 57.95 06/01 100.4 62.08 95.50 75.04 32.28 137.17 43.66 53.90 05/29 105.0 62.21 97.21 78.54 32.22 129.44 42.81 53.14 05/28 120.0 62.69 97.21 85.30 30.30 129.44 43.64 51.93 Current Five Day Simple Average - 62.64 95.79 76.06 31.85 133.44 44.97 55.51

NOTE: Value may change without adequate test.

FRESH PORK CUTS LDS PRICE RANGE WGTD AVG. LOINS, BONE-IN, FRESH 1/4" Trim 13-19# 8.0 115.00-125.00 119.56 1/8" Trm/less 13-19# 2.0 133.00 133.00 1/4" Bladeless 145.00 145.00 D 1/4" Trim 19-23# 1.0 116.00 116.00 combos 23/Up# 2.0 59.00 59.00 LOINS,CNTRCUT,10-11 RIB,1/4"TRM Tender-in FLO 8-13# 1.0 177.00 177.00 Tender-out FLO 8-13# BNLS Strap-on 5-9# 1.5 190.00 - 194.00 192.67 BNLS Strap-off 5-9# 1.5 215.00 215.00 WHILE BNLS LOINS 7-11# 154.00 154.00 A BNLS SIRLOIN .75-1# 1.5 147.00 - 152.00 148.67 BONE-IN SIR 2.5-3.5# BLADE ENDS 2-4# TENDERLOIN 1.25/DN# 0.25 245.00 245.00 LOIN BACKRIB (BOXED) FRSH/FRZN 1.5/DN# * 1.75/DN# * 1.75-2.00# 320.00 320.00 B * 2.00/UP# LOIN BACKRIB (COMBOS) 1.75/DN# PICNIC, FRESH Smkr Trm, RS, combo Smkr Trm, SS, boxed PICNIC CUSHION MEAT Combo 92% Fresh 0.50 105.00 105.00 Boxed 92% Frozen 84.00 84.00 A BOSTON BUTT 4-9# FRESH 1/4" Trim 12.5 83.00 - 92.00 86.40 1/8" Trim 3.0 88.00 - 89.00 88.67 1/4" Trim Neck-off 17.5 94.00 - 97.00 96.74 1/8" Trim Neck-off 5.0 96.00 - 104.00 100.80 BNLS, Cellar Trim combo's 9/UP# SPARERIB, FRESH 3 BAG/3 PCVAC 3.8/DN# 1.5 142.00 - 149.00 145.67 2 BAG/3 PCVAC 3.8-5.8# 131.00 131.00 B COMBOS 3.8/DN# 127.00 127.00 D COMBOS 3.8-5.8# HAM,BONE-IN,TRIMMED 17-20# TS1

(sel) 2.0 53.00 - 54.00 53.50 17-20# TS2 (com) 20-23# TS1 (sel) 7.0 53.00 - 54.00 53.14 20-23# TS2 (com) 23-27# TS1 (sel) 2.0 52.00 52.00 23-27# TS2 (com) 20-27# TS1 (sel) 22.0 49.00 - 54.00 51.93 20-27# TS2 (com) 1.0 49.00 49.00 27#up TS2 (com) HAM,BNLS MUSCLES 94-96% * 3 Muscle Group * 4 Muscle Group 2.0 107.00 107.00 * 5 Muscle Group 3.0 107.50 107.50 Inside Outside Knuckle Lite Butt Inner Shank HAM TRIMMINGS (CHEMICAL LEAN) Combo 72% Fresh Boxed 72% Frozen Combo 90% Fresh Boxed 90% Frozen Outer Shank Frozen BELLY, SDLS, FRESH SKIN-ON, TRIMMED Fresh 10-12# unq Fresh 12-14# 10.0 59.00 - 62.50 60.40 Fresh 14-16# 5.0 61.00 - 62.50 62.20 Fresh 16-18# 56.00 - 60.00 57.63 A Fresh 18-20# 9.0 55.50 55.50 Fresh 20-25# 2.0 48.00 - 52.50 50.

25 SKINLESS, SQUARED Fresh 9-11# Fresh 11-13# Fresh 13-15# Fresh 15-17# SKINLESS, CENTER CUT Fresh 8-10# Fresh 10-12# Fresh 12-14# Fresh 14-16# PORK TRIMMINGS/BONELESS PROCESSING PORK (CHEMICAL LEAN) Combo 42% Fresh 5.0 21.00 - 25.50 22.95 Boxed 42% Frozen 23.00 23.00 A Combo 72% Fresh 5.0 39.00 - 40.00 39.70 Boxed 72% Frozen 38.00 38.00 A BONELESS PICNIC MEAT Combo 72% Fresh 3.0 40.00 - 40.50 40.33 Boxed 72% Frozen 44.00 44.00 A SKINNED JOWLS Combo Fresh 2.0 18.50 - 21.00 19.75 Boxed Frozen 23.50 23.50 E FAT, VISUAL TRACE OF LEAN Combo Fresh 19.00 19.00 A Boxed Frozen TRIM, VISUAL TRACE

OF LEAN Combo 12-16% Fresh 18.00 18.00 D Boxed 12-16% Frozen

Specifications for all reported cuts available upon request.

STANDARD CONVERSION FACTORS FOR RETAIL CUTS (all retail items vacuum packed unless otherwise noted.) Loins (13-22#s): Butts (4-9#s): Vacpak - report basis Vacpak - report basis Gas Pak - add \$2.00 Gas Pak - no conversion Paper - add \$5.00 Paper - add \$3.00 Combo - add \$6.00 Combo - add \$4.00 Spareribs: Bone-in Center Cut Loins: Vacpak - report bas False Lean Off - basis Polywrap - add \$7.00 False Lean On - add \$5.00 Boneless Center Cut Loins: 1/4" Trim - report basis 1/8" Trim - subtract \$6.00

ABCDE after quotes represents days since last actual market test. Quotes are dropped after 5 days of no test or before if they no longer reflect current market conditions.

New Holland Dairy

New Holland Sales Stables
Wednesday, June 3, 1998

Report supplied by auction

56 DAIRY COWS, 55 HEIFERS, 15 BULLS. MARKET STEADY.

LOCAL FRESH COWS 535.00-1225.00.

LOCAL SPRINGERS 835.00-1035.00. FRESH HEIFERS 400.00-1060.00. UPSTATE LOADS FRESH

775.00-1275.00. BETTER FRESH COWS 1125.00-1275.00. SPRINGING HEIFERS LARGE 1085.00-1175.00, SMALL 550.00-800.00. SHORTBRED HEIFERS 510.00-735.00. OPEN BREEDING AGE HEIFERS 535.00-785.00. SMALL OPEN HEIFERS 200.00-450.00. BULLS 350.00-585.00, PUREBREDS 485.00-800.00.

Jersey Shore Livestock Market, Inc.

Auction every Thursday at 4:00 p.m.

Jersey Shore, Pa.

Report supplied by Auction Thursday, June 4, 1998

RETURN TO FARM CALF 50.00-71.00.

GOOD VEAL: 30.00-49.00. COMMON VEAL: 10.00-29.00. CHOICE STEERS: 62.00-65.50. SELECT STEERS: 58.00-61.00. COMMON STEERS: 46.00-57.00. COMMERCIAL COWS: 35.00-41.00. CANNERS - CUTTERS: 30.00-37.00. SHELLS: 24.00-29.00. CHOICE HEIFERS: 62.00-65.25. SELECT HEIFERS: 58.00-61.00. COMMON HEIFERS: 40.00-57.00. GOOD FEEDERS: 60.00-70.00. COMMON FEEDERS: 38.00-59.00. BULLS: 42.00-45.00. SOWS: 19.00-30.00.

LEBANON VALLEY ENTERPRISES, INC.
Manufacturing • Powder Coating • Precast



Loop Stalls

Versatile design offers generous lunge space between loop Heavy construction with 2 3/8" high yield steel tubing with 12 gauge wall

Gates & Fencing

Round corners for safety & strength. Constructed with 1.9 tubing with a 13 gauge wall.



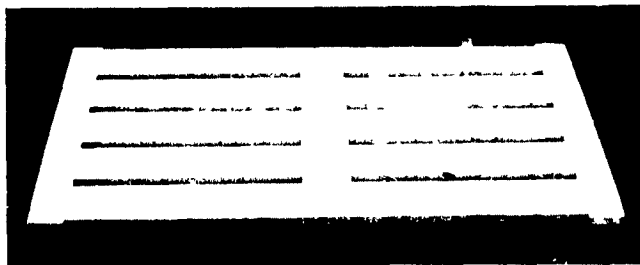
Head Locks

Auto release for downed cows Adjustable neck opening for calf to cow Heavy 1" schedule 40 pipe for uprights



Cattle Slats

Heavy duty cattle slat is wet cast with a 1/2" diameter welded rebar cage 6 1/2" thick throughout the entire slat with 1 3/4" slots Slow cured for extra strength

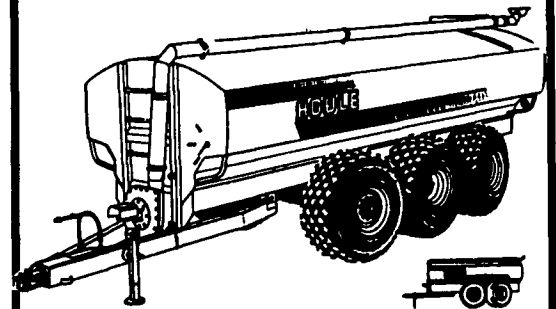


LEBANON VALLEY ENTERPRISES, INC.
Manufacturing • Powder Coating • Precast
P.O. Box 187, Myerstown, PA 17067 • (717) 866-2030

Thank You
DAIRYMEN
For Your Past Patronage.
And wishing You A Prosperous Future.

LIQUID MANURE SPREADER

WITH FLOTATION TIRES TO MINIMIZE SOIL COMPACTION Available with complete line of spreading tool bars and precise flow control to spread manure the ecological way eliminating spray drift and reducing odors. Our tool bars are designed to apply hog or dairy manure on growing fields, between rows of corn or on harvested fields.



4 - 8 ON 8 WHEEL SPREADERS WITH POWER STEERING - 3000 TO 9000 US GAL.

SPREADERS WITH SINGLE AXLE OR TANDERS - 2300 TO 6000 US GAL.

• "V" shape bottom for more complete clean out. • Standard exterior finish: epoxy primer and urethane paint. • Low profile tank for maximum visibility and stability.

HOULE FARM EQUIPMENT MANUFACTURER

Call For SAVINGS
On 1998 Rental Units

SPREADER TANKS and PUMPS AVAILABLE FOR SALE OR RENT

"We're Here To Serve You"
SNOOK'S EQUIPMENT
RD 3, Box 130, Mifflinburg, PA 17844
717-966-2736
Ask For Ernest or Dean