

**35 TRUCKS & TRAILERS**

The **only way**  
to **buy a truck.**

**O'CONNOR**



1992 Ford CF8000  
22' Morgan Van,  
7.8L (210 H.P.)  
6 speed, air brakes  
33,000# GVW,  
power steering,  
109,000 miles,  
fresh paint  
Stock# A05518  
\$22,500

Over 300 more to  
choose from

**O'CONNOR**  
TRUCK CENTERS

SOUTH PHILADELPHIA  
1-800-229-3825  
215-937-4300

HOURS OF OPERATION: MONDAY-FRIDAY 8:30-6:00 • WEDNESDAY TILL 8:00 • SATURDAY 9:00-1:00 SALES ONLY

96 Kauffman Gooseneck Trailer, 14,000  
GVW, Radial Tires, 20'x5'  
Fixed Beavertail  
**\$3,250**  
717/336-7375  
No Sunday Calls

1979 Chevy C30 Stake Body Dump, 350,  
4 speed, Excellent Condition, \$4,800  
**(717) 539-2558**

**USED TOW TRUCK!**

GET  
MORE  
TRUCK  
FOR YOUR  
BUCK  
AT  
BERGEY'S!



JUST  
MINUTES  
FROM  
EXIT 31  
OF PA  
TURNPIKE  
I-476!

1973 GMC, Model 9500 (1985 CAB) 750 Holmes  
Wrecker Body, 238 Detroit, 13 Spd Trans., 2 Spd Rear,  
A/C, In Daily Use By Dealership, Well-Maintained!

**\$14,900**  
PRICED TO SELL!

**\*\* CALL TOLL FREE 1-800-BERGEY3 \*\***

**24 HR  
PARTS &  
SERVICE**

**Bergey's**  
EXCELLENCE SINCE 1924

**GMC  
COMMERCIAL  
VOLVO**

**Truck Center**

SHOWROOM HRS

M-F 9A to 9P

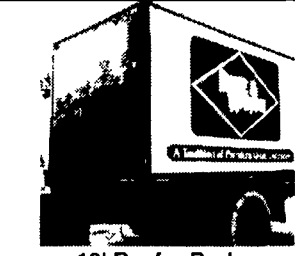
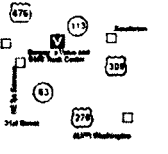
Sat 9A to 4P

CLOSED SUNDAY

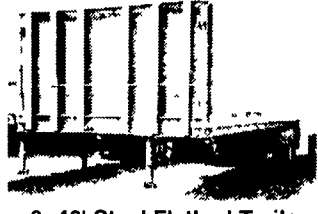
ROUTE 113, SOUDERTON, PA. • LOCAL CALL (215) 721-3400

- Just off Exit 31 of I-476, Rt. 63 West to Rt. 113 North.

- Souderton Exit of Route 309, Rt. 113 South, only 3 miles.



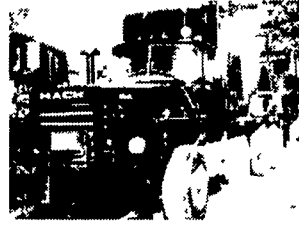
12' Reefer Body,  
under body refrigeration unit  
Uses 220 electric Has damage



3- 40' Steel Flatbed Trailers  
with sliding tandems all in good condition



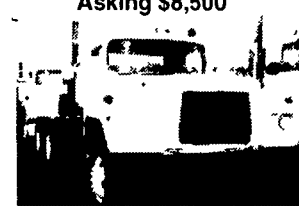
1981 Volkswagen Rabbit  
Diesel 4 Spd 177 354 Mi  
2 Door Needs Driver Side Fender



1973-75 Mack Cement Mixers  
10+11 Yard Barrels 6 Spd + 13 Spds 44+  
55 000 Lb Rears All Runs Excellent  
Asking \$8,500



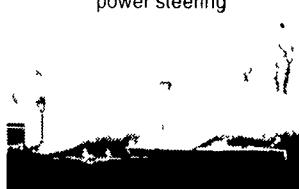
1993 Toyota Pickup  
4 Cyl 5 Spd Trans AM-FM Radio  
A/C Excellent Condition High Mileage



1977 Mack R Model tractors,  
300 engine 5 spd, 38,000 lb rears  
power steering



1500 gallon Sludge Tank  
w/2cyl Deutz Diesel



Aluminum Tanker/Trailers  
7500 gal and up



New flatbeds available  
Sizes currently available are 12', 14', 20'  
22' and 24' Racks are also available



3000 Sludge Tank



19' NEW Lumber Body  
w/Ratchet Tie-Downs  
w/Dumping Hoist

Expanding Business  
Looking For Mechanics  
& Mechanics Helpers  
CALL FOR DETAILS!!



International Industrial Loader  
4cyl Diesel engine, runs good

**Wm. Cohen & Sons**  
**Thorndale, PA**

(610) 269-1298

Call between 7 am - 4:30 pm

1976 GMC Motorhome  
Edgemount 455 V-8 engine, FWD, 26' Long 3  
spd trans 4 beds, bathroom,  
kitchen needs work

Hundreds of Used Truck Tires For Sale  
Sizes from 16" to 24"

1979 Crane Carrier Cement Mixer,  
10 Yd Rex Mixer 230 Cummins  
8 Spd Trans 44 000 Lb Rears  
Asking \$8,500

Used Overhead Door For Sale  
16 H x 14' W  
Asking \$550

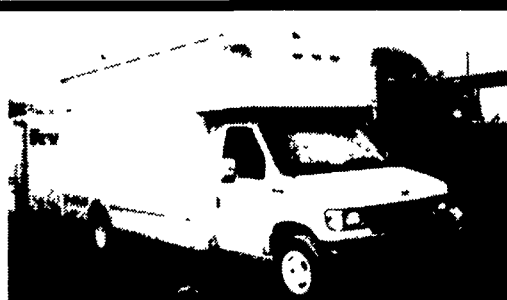
Aluminum Loading Ramps  
8'x10', also some other sizes available

Yale Electric Hoists  
1/2 ton cap, 440 volt,  
single and three phase  
Asking \$350/ea.

Pedestal Grinder  
Baldor 2 Hp, 3 phase, 220 amps

Toledo Scale  
1,000 lb Capacity

Oil Heaters  
250,000 BTU s



1993 Ford E350, 460 V8, 230 HP, Gas,  
Auto, Power Steering, Air Conditioning  
**\$11,500**



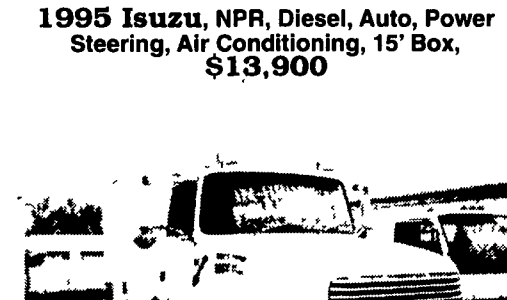
1995 Mitsubishi, 6D31T, 145 HP,  
Diesel, Auto, Power Steering, Air  
Conditioning, 79,163 Miles, 17,000 GVW  
**\$21,000**



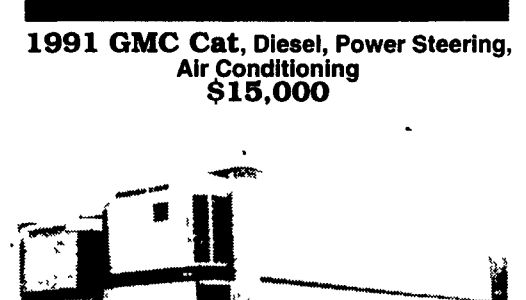
1995 Isuzu, NPR, Diesel, Auto, Power  
Steering, Air Conditioning, 15' Box,  
**\$13,900**



1991 GMC Cat, Diesel, Power Steering,  
Air Conditioning  
**\$15,000**



1993 Ford KTLA9000, Tandem Axle,  
Cummins 350E 9 Speed, Power Steering, Air  
Conditioning, Air Ride **\$24,900**



1989 Utility, 43' 50x96, Swing Doors,  
Sliding Tandem Axles, Thermulti Temp Reefers  
**\$9,000**

**Ryder**  
Transportation Services

\* 1 (800) 767-2278 / (717) 796-5950 Fax (717) 796-6095

Home of Road Ready Used Trucks  
\* Complete Maintenance Records Available  
\* Limited Warranty  
\* Ask for John Verdonk