

LESHER Mack SALES & SERVICE

27th & Cumberland St. Lebanon, Pa 17042
Route 422 West

1974 Int. Loadstar
392 V8, 4 Spd., Auto,
10 Ft Bed, 10' Road
Plow, New PA
Inspection, 26,000 Lb.,
Runs Good



1995 Parker Dump
O A. Length 34ft.,
3-Axle Air Ride,
11R22 5, Spoke

LEASE IT!
1999 Isuzu NPR 14 Ft.
Supreme Van Body, Call
For Details
Ask For Leasing Dept.



NEED A SLEEPER OR DAYCAB?
Sleeper boxes can be removed -
plenty to choose from
1994's - 1995's

E7-350 RTLO14610B - 10
Spds., DS404 - 3.9OR on Air,
Steel Disc Hub Pilot, 295/75R
22.5 192 WB, 42" Highrise,
400,000 Miles



717-273-4535

Stock Trailer: 1987, Bonanza, 20x6x6 1/2 gooseneck, good floor, no rust, new inspection, \$2,800. (717)423-6758.

WANTED: R-700 Mack w/V8 engine to restore. Call A & B Garage INC. 717-263-4139.

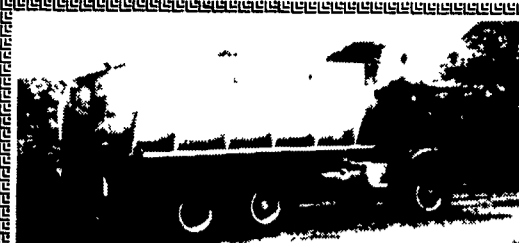
WANT tanker trailer, suitable for driveway sealer

BICYCLE CARRIERS

SAVE \$\$
FREE UPS
1-800-WEAVER-D
1-800-932-8373



(2) ALUMINUM TRAILERS
Single Compartments
6000 gallon \$4,000
6800 gallon, insulated \$5,000
Used for water storage
215-855-2946



16' Spreader Truck
Ideal for spreading poultry, lime or compost. Ready for work. Best offer.

717/684-6680
No Sunday Calls

KEIM

YOUR CHEVY GEO FAMILY

(717) 768-8225
(800) 223-KEIM

RT. 30 Lincoln Highway East
Paradise, PA 17562

YOUR TRUCK, VAN & 4x4 HEADQUARTERS
1-800-223-KEIM



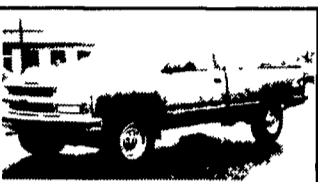
90 CHEVY
Extended Cab, 4x4 1500
Silverado, V8, At, A/C,
50,000 Miles



95 CHEVY TAHOE LT 4X4
Black, AS, AC, CC, EW, EL,
PSEAT 31,000 Miles



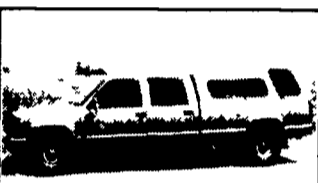
93 CHEVY K1500 4x4
SILVERADO Short Bed, Flare
Side Custom Conversion, V8,
Auto, A/C, 55000 Miles



97 CHEVY REG. CAB
3/4 Ton, Silverado, V8, Auto,
A/C, PW, PL
\$18,900



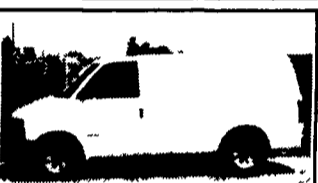
95 GMC SIERRA
EX CAB 4X4
Burg. & Silver, AT, AC, EW, EL,
CC, CASS, 44,000 Miles



96 CHEVY C3500
CREW CAB
Silverado, Single Wheel,
454 V8, Only 21,000 Miles



95 CHEVY K1500
EXTENDED CAB 4x4
Silverado Z71, 350 V8, Auto
A/C, Boards, Cab Lights,
50,000 Miles



95 CHEVY ASTRO
CARGO VAN
4 3 V6, Auto, A/C,
50,000 Miles

97 DODGE RAM 2500 CLUB CAB 4x4
Laramie SLT Pkg., Cummins Turbo Diesel
AT A/C Most Options 35 000 Miles

95 FORD F350 CREW CAB DUALY
Power Stroke Diesel, XLT, AT, A/C, C, T,
PW, PL, Alum Wheels, Fiberglass Cap,
73,000 Miles, Dk Green, #F727

96 FORD F250 SUPER CAB 4x4
Power Stroke Turbo Diesel, Short Bed, XL
Trim, 5-Speed, AC, C,T, Dual Tanks, Only
23,000 Miles, Black #F651

93 FORD F250 XLT
7 3 Diesel, AT-OD, A/C, C, T, PL, PW, Dual
Tanks, Running Boards, 65,500 Miles
Blue/Li Blue, #F649

89 IVECO 14FT. STAKE BODY
Turbo Diesel, 5-Speed, PS, PB, 11,000
GVW, 99,000 Miles #IV101

85 FORD F250 HEAVY DUTY
6 9 Diesel, 4-Spd., AM/FM Cass, C,T, Only
95,000 Miles #F733

93 FORD F350 CREW CAB DUALY
7 3 Turbo Diesel Centurion Conversion
Pky, 5-Spd A/C Most Options 80 000
Miles Maroon w/Stripe Pkg

90 FORD F250 SUPER CAB 4X4
7 3 Diesel XLT, AT, A/C, Most Options,
Gooseneck Hitch, Capt Chairs, 120,000 Miles,
2-Tone Blue/Tan

94 CHEV K3500 4X4 CONTRACTOR DUMP
6.5 Turbo Diesel, 5-Spd, A/C
Am/Fm Cass, Class III Hitch, Tool Box,
70,000 Miles, #C451

91 FORD F250 SUPER CAB
7 3 Diesel, XLT, AT, A/C, S, T, Hitch,
66,000 Miles, Brown/Gold

OVER 120 TRUCKS

Preferred Warranties Available on Most Trucks

Bobby Gerhart's Truck World

2400 E. Cumberland St. Rt. 422 Lebanon, PA 17042 717-273-7995

Mon. - Fri. 9-8, Sat. 9-3

97 FORD F350 CREW CAB 4x4
Power Stroke Diesel AT, AC, XLT Pkg Alum
Wheels, PW, PL, C.T. Only 18,000 Miles
Black #F714

97 CHEV 1500 EXT. CAB
3 Dr 4x4, 350 Vortec, AT, A/C Silverado
(most options), Only 4,000 Miles Blue
#C472

95 FORD F350 CREW CAB DUALY
7 3 Power Stroke Diesel XLT AT A/C
Most Options, Running Boards 30,000
Miles, Black-Grey Interior

91 DODGE UTILITY DUMP
Cummins Turbo Diesel, AT, AM/FM,
Dual Wheels, Utility Body w/Dump
Insert, 64,000 Miles #D210

94 CHEV. 3500 10FT. FLATBED
6 5 Turbo Diesel 5 speed A/C
#473 85,000 Miles Tool Box

95 DODGE RAM 3500 4x4
Contractor Dump, Cummins Turbo Diesel Plow,
5-Spd., A/C, AM/FM, 25,000 Miles

95 CHEV K2500 SUBURBAN
4x4 6 5 Turbo Diesel LT Pkg AT Dual
A/C Leather & Lots Options Alum
Wheels 64 000 Miles, Dk Green #C470

96 GMC 2500 EXT. CAB
Heavy Duty Sierra Pkg 454 Vortec, AT, A/C
Cruise, 31 000 Miles Red #G192

95 GMC K-2500 EXT. CAB 4X4
6 5 Turbo Diesel AT A/C, C, T, SL Trim
118 000 Miles, White, Looks & Runs Good
#G190

92 FORD F350 SUPER CAB DUALY
Diesel, Centurion Astin Pkg, XLT Trim, AT,
A/C, Most Options, 41,000 Miles

95 CHEV K3500 CREW CAB DUALY
4x4, 454 V8, AT, A/C, Silverado Pkg, PW, PL, C
T, 48,000 Miles, Black, #C468

90 FORD F350 CONTRACTORS DUMP
460 V8, 5-Speed, AM/FM, PS, PB, Dual
Tanks, 57,000 Miles, Green #F735

90 FORD F350 4X4 UTILITY DUMP
460 V8, AT, AM/FM, PS, PB, Dual Tanks,
Blue #F734

94 CHEV K3500 4X4 CONTRACTOR DUMP
6.5 Turbo Diesel, 5-Spd, A/C
Am/Fm Cass, Class III Hitch, Tool Box,
70,000 Miles, #C451

91 FORD F250 SUPER CAB
7 3 Diesel, XLT, AT, A/C, S, T, Hitch,
66,000 Miles, Brown/Gold

94 FORD F350 CREW CAB DUALY
7 3 Turbo diesel, XLT, AT, A/C,
Most Options, 112000 Miles
2-Tone Blue/White,
Looks & Runs Excellent

90 FORD F350 4X4 UTILITY DUMP
460 V8, AT, AM/FM, PS, PB, Dual Tanks,
Blue #F734

94 CHEV K3500 4X4 CONTRACTOR DUMP
6.5 Turbo Diesel, 5-Spd, A/C
Am/Fm Cass, Class III Hitch, Tool Box,
70,000 Miles, #C451

91 FORD F250 SUPER CAB
7 3 Diesel, XLT, AT, A/C, S, T, Hitch,
66,000 Miles, Brown/Gold

91 FORD F250 SUPER CAB
7 3 Diesel, XLT, AT, A/C, S, T, Hitch,
66,000 Miles, Brown/Gold