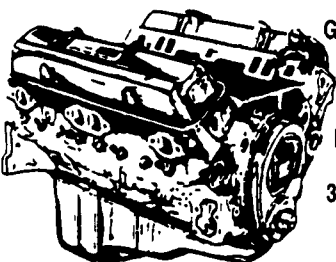


# JONES

## Goodwrench ENGINE HEADQUARTERS



GM GOODWRENCH  
350 V8 1973-85  
Part Number  
10067353  
New Engine - Not  
Rebuilt  
36 Month or 50,000  
Mile  
Warranty

New Engine - No Core Fee **\$1199<sup>00</sup>**

**WE'LL  
MATCH ANY  
COMPETITOR'S  
PRICE!**

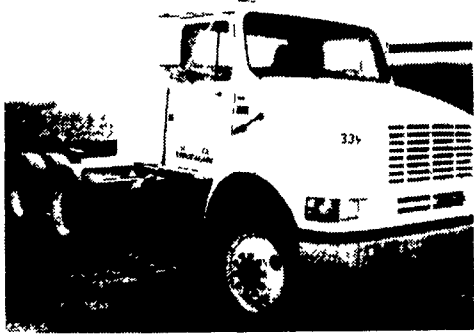
**6.5L  
GOODWRENCH  
DIESELS  
From  
\$3,175**

Call 394-0711 for prices on other New or Remanufactured Goodwrench Engines. 2.5 Liter thru 454 cid. Gas and Diesel

Chevrolet - Pontiac - Olds - Buick - Cadillac - GMC

## JONES GM PARTS CENTER

1335 Manheim Pike, Lancaster, PA 17604  
Easily Located on Rt. 72 Just off of Rts. 283 & 30  
Hours: Mon-Fri 7:30 a.m. - 9 p.m. Sat 7:30-3  
(717) 394-0711



91 IHC Truck Tractor, tandem,  
9sp 300 Cummins.....\$12,500

Curry Supply Co., Curryville, PA  
1-800-345-2829

1997 Ford F150 XLT, Ext Cab, 3rd. Door 42 Ltr, 5 Spd, AC, PW, PL, Step Side, 2 WD Alloy Black - Nice Driver.....Only \$15,900

1996 Chev Ext Cat 4x4, 1500 Series, Silverado, 3rd Door, At, 350, Ac, Local, 1 owner, Green, PW, PL, 41,000 Miles..... Only \$21,900

1996 Dodge Ram 1500 Short Bed, 4x4 SLT Maroon/Silver, AT, 360 8V, AC, PU, PL, Wheels 41,000 Miles..... \$18,900

1995 Ford F250 Ext Cab Heavy Duty Longbed, 300 6 Cyl., AT, AC, High Mile Nice Truck..... was \$10,900 Now \$9,900

1995 GMC Suburban SLE, 3rd Seat, Dual, AC, Alloys, Blue, Tint Glass, 350, 4x4, AT, PW, PL..... \$21,900

1993 Chev. Silverado 1500, Reg Cab, 4x4, 5 Spd., 305, Green AC, PW, PL, Alloys. \$15,900



(717) 949-6513

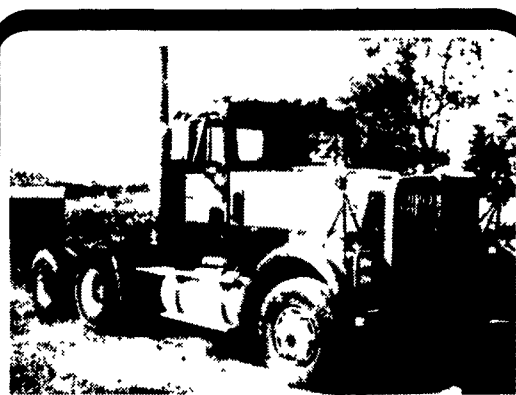
'93 Dodge LE 150 Club Cab, 2WD, 360 auto, PS, PB, PW, PDL, cruise, tilt, air, AM-FM cassette, limited slip diff., charcoal & silver w/matching fiberglass cap, one owner, excellent condition, \$10,900. 717-733-2873

Kingston Horse Trailer-76" in height. 2 Horses. \$800. After 5:30pm. 717-336-4049.

Knapheide utility bed, wide box, 90"x9", \$950 OBO. 717-426-2659

MACK PARTS FOR SALE: Engines, blocks, heads & cranks, cabs, hoods & doors, trans, rears, ALL MACK PARTS REASONABLE PRICES MACK TRUCKS BOUGHT (complete or parts) 888-625-6485.

Menac 45' flatbed trailer, 1986 w/Tico 6-ton traveling boom (same as Hiab), \$11,000. 717/354-3105.



1985 International 9370

350 Cat, 15 Speed Trans., Double Frame, 44,000 lb. Rears, Hendricksen Suspension

**\$10,500**

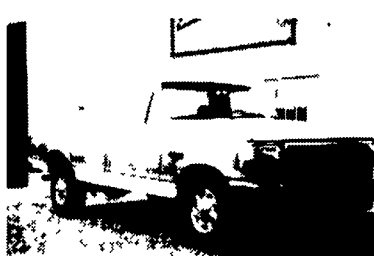
Curry Supply Co., Curryville, Pa.

1-800-345-2829



## AUTO BODY & SALES

3394 Division Hwy.  
New Holland, PA • 717-355-0644



1994 Ford F-350 XLT  
2 WD, 7.3 Diesel, Auto, PS, PB, Air, PW, PDL, 90,000 mi.  
**\$11,900**



1989 Chevrolet  
Scottsdale 2500 6.2  
Diesel, Auto, Air 216,000 mi.  
**\$3,900**

# "CLEANEST TRUCKS AROUND"



'87 Ford L9000, T.T NTC 350 Cummins, 13 Sp Trans, Jake Brake, Custom Int, P.S., Air Brakes, A/C, Exc. Condition 50,000 GVW **\$23,500.**



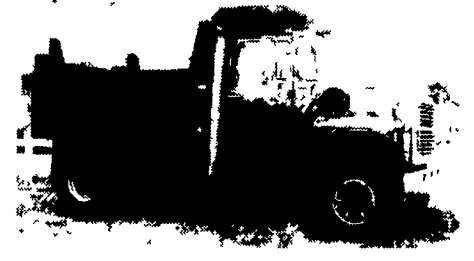
'85 L9000 Tandem NGW 14' Dump Body, Very Good Cond, 6.71 Detroit w/Turbo, 8LL Trans, 54,000 GVW **\$25,500**



'85 2300 with Complete New 10' Dump, 10 Cummins Eng., 7 Speed Trans, Air Brakes, AC, Exc. Cond, GVW 35,000 **\$21,500**



'85 L8000 New 10' Dump Complete, Exc. Cond., 3208 Cat, 7 Sp Trans, GVW 38,400, Air Brakes, P.S **\$22,500**



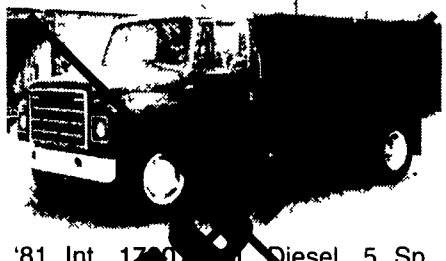
'88 L8000 Complete, New 10' Dump & Hoist, Exc. Cond., 7.8L Ford Diesel, 7 Sp Trans, GVW 39,000, Air Brakes, P.S. **\$25,000**



'88 Int. S1900, w/New 10' Dump Bed, DT 466, 5 Sp. Trans, 2 Sp. Rear, Air Brakes, P.S. 32,300 GVW 49,000 Miles Exc. Cond. **\$24,500**



10' Used Dump Body, w/Good Sub Frame & Hoist **\$3,200**



'81 Int. 1700, 6.2L Diesel, 5 Sp. Trans., 100,000 Miles Hyd. Brakes, 14' Flat Bed, Under CD, 21,500 GVW, Very Good Cond. **\$7,500**



'87 Ford LN8000 C&C, 3208T, 215 HP, 5 Sp. Trans, Air Brakes, P.S., A.C., 33,000 GVW, C. to A. 176", W.B. 204, Exc. Cond. **\$11,500**



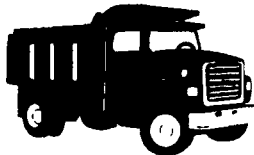
'94 Ford LN 8000 C&C, 8.3L Cummins 250 HP, 7 Sp Trans, Custom Int., P.S., Air Brakes, A/C, AM/FM. Cass & C.B., Tilt Wheel, C to A 186", WB 234" **\$25,500**



'91 Int. 4900, C&C, DT 466, 7 Sp. Trans, Air Brakes, P.S., 32,700 GVW, C to A 186", WB 254", Exc. Cond. **\$16,500**



'81 Int. 1800, C&C, 3208 Rem, 210 Hp, 5 Sp. Trans, 2 Sp. Rear Air Brakes, P.S., WB 206", C to A 135", GVW 33,700 **\$11,500**



# AL HAMILTON MANAGEMENT COMPANY

Used Medium & Heavy Duty Trucks

P.O. Box 157 • 55 Doe Run Road • Manheim, PA 17545  
Phone: 717-665-7145 • Fax 717-665-2137