

Salesmen:
Alvin Martin
Bob Lentz
Dave Wenger

WENGBERS OF MYERSTOWN FARM MACHINERY



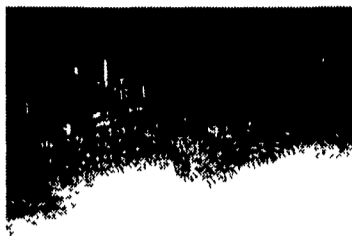
814 S. COLLEGE ST. (ROUTE 501)

(717) 866-2135

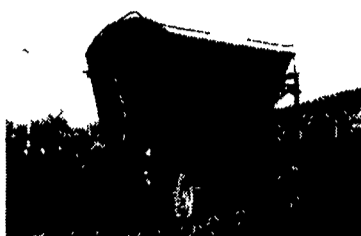
MYERSTOWN, PA 17067



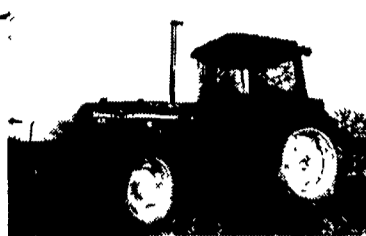
JOHN DEERE 338 w/40 Ejector,
 Very Good Condition



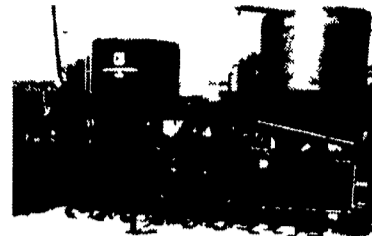
Yetter 12' and 15' Rotary Hoes



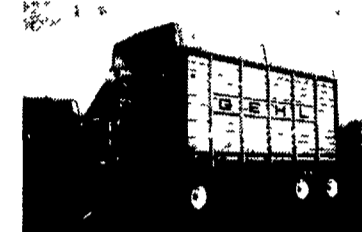
RICHARDTON 1200 Side Dump
 (Sharp)



JOHN DEERE 2950 MFWD,
 priced right



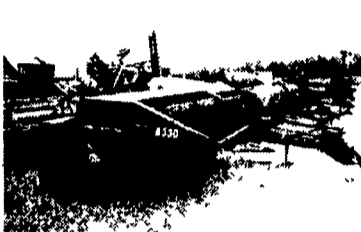
HOWARD heavy duty 11' 3 pt.
 1000 PTO rotovator



GEHL 970 Tandem Axle, Roof,
 3 Beater, Good Condition



WHITE 2-85 w/Cab, Good Condition



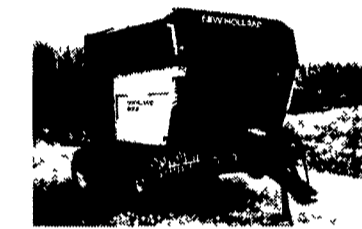
CASE IH 8330
 9' Mower Conditioner



FORD 4610 Diesel w/Loader,
 Very Nice



NEW HOLLAND 852 Round Baler,
 Economically Priced



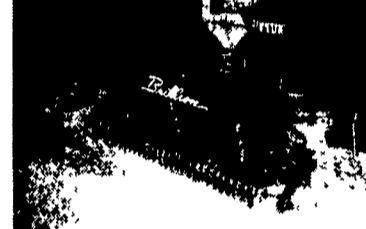
NEW HOLLAND 853 Round
 Baler



1995 Case IH 7210 MFWD, 3489
 Hrs 18.4x46, weights, nice



GEHL 980 Hydraulic Drive, Tandem
 Axle, 18', Near New (No Roof)



BRILLION 5'6", 3 pt. Seeder,
 Very Good Condition



JOHN DEERE 1219
 9' Haybine

TRACTORS

- Case IH 7210 MFWD
- JD 4240 CAQ
- JD 4030, 4 post, quad-range
- JD 4430 open station, quad
- JD 2950 MFWD, cab
- JD 2640 utility, nice
- JD 435 2cyl. GM diesel, very average
- 2) Case IH 265 Hi-Offset w/Cultivator
- IH 1066, factory cab, weights, nice
- IH 684 w/2250 loader, nice
- Ford 6640 open station
- Ford 5610 II w/loader
- Ford 4610 w/new 195 loader
- Ford 4610 rollbar and canopy
- Ford 445A 4WD Industrial loader w/3pt.
- Ford 5600 w/Ford 772 loader
- Ford 6000 Commander diesel
- White 2-85 w/cab
- Oliver 550 w/loader
- Case 430 gas tricycle
- Case 570 gas w/loader
- Case VAC w/3 pt.
- Allis Chalmers WD 45 gas wide front
- Farmall H w/Snow blade
- Farmall H WF w/sprayer
- Farmall MD w/P.S.
- JD LA w/cultivator

CORNPLANTERS

- AC 2R 3pt Notil cornplanter
- JD 7000 6R30 Liquid Planter
- JD 7000 4R Dry Fert.
- 3) JD 80 Planting Units
- JD No-Til Coulters for 7000 Planters
- IH 800 4R30, liquid cyclo air
- IH 400 4R 30 No Til
- JD H 2R Mtd. Planter
- Black Hawk 2R 3 pt. planter
- 4) Ford 309 2R 3 pt. corn planter

COMPACT TRACTORS

- IH 284 28HP gas 2WD w/snow blade
- 1980 GMC 20' rollback, 27,500 GVW,
 gas engine
- IH 154 low boy w/loader
- JD 1050 4WD w/Loader & Canopy

ROLLOVER PLOWS

- 3) JD 4200 4x16, 3x base.....\$2200 ea
- JD 4200 4x16, 3x base.....\$2850
- JD 4200 4x18, 3x base.....\$2200
- IH 140 4x16.....\$2600
- 2) IH 125 4x16.....\$2200 ea
- Ford 145 4x18 on land.....\$2000
- Case 600 4x16.....\$2750
- JD 3825 2x switch plow.....\$1950

CHISEL PLOWS & FIELD CULTIVATORS

- Krause 21' Landsman Sharp
- Wilbeck 7T soil saver (sharp)
- Glenco 7T Soil Saver
- Glencoe 5T Soil Saver
- Brillion 3T 3 pt. Soil Saver
- Brillion 5T 3pt chisel
- Bush Hog 12T 3pt chisel 8T base
- 2) 1 Shank 3 pt. Sub Soiler
- Kewanee 11T 3 Pt.
- Brady 7T 3pt chisel
- AC 7T 3 pt. chisel
- IH 4500 13' wing fold field cult.
- IH 45 16' 3pt f/cult
- Hiniker 1120 18' flat fold f/cult.

MOWERS

- JD 616 6' 3 pt rotary
- 3) Woods 3180 15' Batwings
- Woods 2126 10-1/2' mower
- 2) Woods Cadet 7' 3 pt.
- King Kutter 4' thru 6', 3 pt & pull
- Woods RD 7200 rear discharge 6'
- Woods RM 660, 6' estate
- Woods belly mowers for Cub & A
- 2) Toro reel mowers
- Bush Hog 7' 3pt. rotary mower
- IH 6' 3 pt. rotary mower
- BEFCO 110 9' estate mower
- Mott 38" Flail w/8 HP engine
- 2) Woods C114 9 1/2' rotary mower
- Case IH, NH, Deutz 3pt. disc mowers
- Ford 917, 5 1/2' 3 pt. flail mower

SKID LOADERS

- Gehl 3825 33 HP Kub. diesel
- Hydra Mac 6C mini skid steer
- Ford NH LX485 (sharp)
- Ford CL-35 (Coming in)

BALERS AND HAYBINES

- NH 853 round baler
- NH 852 round baler
- JD 410 round baler
- Farmhand (Vermeer) 405 HDS round baler
- 2) NH 488 9' haybines (nice)
- FNH 489 9' haybine
- 2) JD 1219 9' haybine
- Case 550 9' haybine
- Case IH 8330 9' haybine
- JD 338 w/40 ejector
- 2) JD 327 baler w/ejector
- FNH 316 Baler w/Thrower (sharp)
- NH 65 compact baler

DISC HARROWS

- Case IH 475 13' disc, sharp
- JD 230 20' wing fold, sharp
- JD 220 18' Center Fold (Coming In)
- Kewanee 1100 21' flat fold
- Kewanee 12' rockflex, nice
- Kewanee 10' rock flex
- Case 11' disk, nice
- Hutchmaster HD 12' offset
- 4) IH 8' & 10' transport disk
- White 271 18' wingfold rock flex
- AC 8' transport disk
- JD 8' transport disk
- IH drag disks

COMBINES, HARVESTERS & CORNPICKERS

- JD 4420 combine, cab, air, diesel
- JD 300 Husker w/2RN
- (2) NH 770 Harvester 1R, 2R and hay
- IH 82 pull type combine
- IH 80 pull type combine
- JD 443 & 643 oil bath corn heads
- JD 213 13' flex head
- Massey Harris 26 Combine

PLOWS

- JD 3600 5x18 Auto Reset Pull Type
- JD 2800 8x Variable Auto Reset
- Ford 140 3x16 Auto Reset, 3 pt.
- Oliver 348 3x16 3 Pt. Auto Reset
- Oliver 3x16 3 pt. cushion trip
- JD F145 3x16 3 Pt. Trip
- IH 720 4x18 auto reset
- 2) IH 450 3x16 3 Pt. Auto Reset
- IH 2x14 3pt. trip bottom
- IH 1x Fast Hitch Plow
- Super A and Cub Plows
- Several 2x 3 Pt. Plows
- Imco 1x3 pt. Plow
- Oliver 2x14 Pull Plow
- IH 2x16 FH
- IH 3x FH

ROLLER HARROWS AND PACKERS

- Brillion 18' packer w/end trans
- Brillion 16' Packer w/end trans
- Brillion 10' packer
- Dunham 10' cultimulcher
- Brillion 10' cultimulcher
- Dunham 12' Cultimulcher
- Brillion 12' Cultimulcher
- 3) Brillion 15' Cultimulcher

HAY EQUIPMENT

- 3) Pequea 710 PTO tedder
- NH 254 rake/tedder
- Kuhn 3 pt. rake/tedder
- NH tandem rake hitch
- Ag Wrap 5x5 3pt. bale wrapper
- 3) 3 pt. bale mover
- Loader mount bale spear (Universal)
- Loader mount bale hugger
- Zimmerman 32' corn/hay elevator
- Zimmerman 40' hay/corn elevator
- NI 30' corn/hay elevator
- Allied 40' corn/hay elevator
- MF Hay Rake (very nice)

MISCELLANEOUS

- Richardton 1200 side dump (sharp)
- JD 8250 14x7 DD w/grass & fert.
- JD 8300 18x7 DD w/grass
- JD 8300 24x6 DD w/grass
- IH 510 17 DD w/grass & fert.
- Woods 6500 3 pt. backhoe attachment
- Woods 750 3pt backhoe (sharp)
- Kelley 30 3 pt. backhoe attach.
- Yetter 12' & 15' rotary hoe
- (5) Belt 16' Alum. Elevator
- JH 1R PTO Potato Digger
- Oliver 2R Potato Digger
- (10) Gravity Bin Wagons
- EZ Flow & JD 8' and 10' lime drill
- 2) Howard 11'3 pt. HD rotovator
- 18.4x38 Open Center Duals

FINANCING AVAILABLE - TRUCKING AVAILABLE