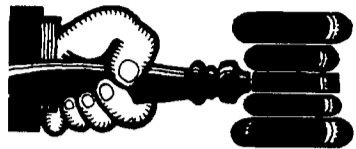


## Public Auction Register

Closing Date Monday 5:00 P.M.  
of each week's publication  
Internet Sale Register will be updated  
every Sat. at 2:23 P.M.

MON NOV 23 - 10AM 100 W Jackson St, New Holland, Lanc Co, Pa Hay, grain & straw auction A & C Dffenbach Auction, Inc  
TUES NOV 24 - 9AM 100 W Jackson St, New Holland, Lanc Co, Pa Quilt, craft, & buggies

A&C Dffenbach Auction Inc  
WED NOV 25 - 109 N Maple Ave., Leola, Lanc Co, PA Farm Equipment Auction, Wolgemuth Auction, 717-656-2947  
WED NOV 25 - 9AM 100 W Jackson St, New Holland, Lanc Co, Pa Quilt & craft auciton



### AUCTIONEER'S DIRECTORY

Call 717-626-1164 to list your auction service.

## NOTICE!!!

Look For Public Sales  
Scheduled Past Deadline  
On Second To Last Page  
Of Section A

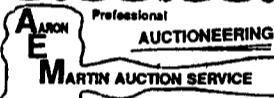
Office:  
717/291-1542

Residence:  
717/354-9534

## JACK DELP

Certified General Appraiser  
Specializing in Farms & Land

148 East Broad Street  
New Holland, PA 17557



410 W. Church Rd.  
Ephrata, PA 17522  
(717) 733-3511

Real Estate • Farm Equipment  
• Antiques • Household Goods

It doesn't cost to use our Auction Service...It Pays.  
CALL TODAY!!



KREIDER, KLINE & GOOD

AUCTIONEERS  
COMPLETE PROFESSIONAL AUCTION SERVICE  
REAL ESTATE - FARMS & RESIDENTIAL  
PERSONAL PROPERTY - ANTIQUES -  
FARM STOCK SALES - LIQUIDATIONS  
RANDAL V. KLINE LLOYD H. KREIDER  
AUCTIONEER-REALTOR AUCTIONEER  
717-733-1006 717-786-3394

ROY E. GOOD, JR.  
AUCTIONEER  
(717)445-4309



HORNING

Farm Agency, Inc.

Courteous Real Estate Services  
Professional Auctioneers  
State Certified Appraisers  
Specializing in Farms and Land  
Alvin Horning, Broker  
Route 23, Morgantown, PA  
(610) 286-5183

"Honesty is a Priority in my Bid-ness"

PHILIP HURST  
Professional  
AUCTIONEER

AU-003375-L

Call HURST FIRST  
(717) 336-5443

20 South Ridge Rd.  
Reinholds, PA. 17569

A&C Dffenbach Auction Inc  
WED NOV 25 - 10AM Wolgemuth Auction, 109 N Maple Ave, Leola, Lanc Co, PA Wolgemuth Hay Sale Dennis Wolgemuth, Auct  
FRI NOV 27 - 10AM New Holland Sales Stables, Inc, 101 W Fulton St, New Holland, Lanc Co, PA. Beef Sale 717-354-4341  
FRI NOV 27 - 1PM 548 Alexander Spring Rd, Carlisle, PA State graded feeder pig sale Carlisle Livestock Market, Inc, 717-249-4511  
FRI NOV 27 - 6PM New Holland Sales Stables, Inc, 101 W Fulton St, New Holland, Lanc Co, PA Feeder Cattle Sale 717-354-4341  
SAT NOV 28 - 8:30AM - Tack 11AM Horse Sale Middleburg Livst Auct Sls Inc, Middleburg PA Clarence Shirk & John Shirk,

Owners. 717-837-2222  
MON. NOV. 30 - 10AM 100 W Jackson St, New Holland, Lanc Co, Pa. Hay, grain & straw auction A & C Dffenbach Auction, Inc

### DECEMBER

TUES DEC. 1 - 548 Alexander Spring Rd, Carlisle, PA Fed Cattle Sale Carlisle Livestock Market, Inc., 717-249-4511.

TUES DEC 1 - Rogers Comm Auct, 20 mi S of Youngstown, OH on St. Rt 7, to Rogers, OH, 1 mi W on SR 154 to auction Equipment Consign Auct, lawn & garden, firewood, lumber & more Rogers Community Auction, Inc., 330-227-3236

WED DEC 2 - 109 N Maple Ave, Leola, Lanc Co, PA. Lumber & Building Materials Sale. Wolgemuth Auction, 717-656-2947

WED DEC 2 - 10AM Wolgemuth Auction, 109 N Maple Ave, Leola, Lanc Co, PA Wolgemuth Hay Sale Dennis Wolgemuth, Auct

WED DEC 2 - 6:30PM 100 W Jackson St, New Holland, Lanc Co, Pa Winross, Hess, farm & toys A&C Dffenbach Auction Inc  
FRI DEC 4 - 7PM New Holland Sales Stables, Inc, 101 W Fulton St, New Holland, Lanc Co, PA Horse Sale 717-354-4341

FRI DEC 4 - 7PM Fingerlakes Livstock Exc, 3865 Rt 5&20, Canandaigua, NY Feeder Cattle Sale 716-394-1515

### NOTICE

To assure that your Public Sale appears in the Public Sale Section we must have your advertisement by 5 P.M. Tuesday of each week's publication.

## ROGERS COMMUNITY AUCTION INC.

"WHERE BUYER AND SELLER GET TOGETHER"

JIM, KEN, BILL BAER AUCTIONEERS  
5640 RALEY ROAD, NEW WATERFORD, OHIO 44445  
330-227-3233

DIRECTIONS: 20 miles South of Youngstown, Ohio on St. Rt. 7 to Rogers, Ohio, then West 1 mile to Auction or 8 miles East of Lisbon, Ohio on State Route 154 to Auction. Corner of St. Rt. 154 and Riffle Road.

**\*\*NOTE NEW DAY FOR EQUIPMENT CONSIGNMENT AUCTION\*\***

### TUESDAYS

Equipment Consignment Auctions

Selling farm, commercial, lawn and garden and rental equipent as well as tools, cut lumber, firewood and misc. items.

**!! The First Tuesday of Each Month !!**

7 Auctioneers operating part of the day. A variety of concession stands and hardgoods vendors on the grounds.

### STARTING TIMES

NOTE: New starting time on Lawn and Garden Equipment - 4:00 P.M.

Misc. Items - 3:00 P.M.

Firewood and Lumber- 5:00 P.M.

Equipment - 6:00 P.M.

### Check In Times

Monday before Auction - 8:00 A.M. to 8:00 P.M.  
Tuesday day of Auction - 8:00 A.M. to 3:00 P.M.

### Check Out Time

Day of Auction-Wednesday - 8:00 A.M. to 8:00 P.M.

### WEDNESDAYS

Hay and Grain Auctions

Selling truck loads of hay, straw, ear corn, etc. By the bale or ton.

**Every Wednesday at 1:00 P.M. Sharp - Year Round**

### Check In Times

Mondays - 8:00 A.M. to 4:00 P.M.  
Tuesdays - 8:00 A.M. to 4:00 P.M.  
Wednesdays - 8:00 A.M. to sale time

### FRIDAYS

Open Air Market - Eggs, Produce and Poultry Auctions

**!!! EVERY FRIDAY ALL YEAR AROUND !!!**

### MARKET

The largest open air market in the tri-state area! Open 7:30 A.M. to ??? every Friday. Over 4 miles of outside vendors spaces and 300 vendors under roof. Fresh produce, antiques and collectibles, food concessions, meats, cheeses, tools, etc. Both new and used, Market office opens at 7:30 A.M.

### AUCTIONS

Auctioning farm fresh eggs and produce in individual and wholesale quantities. Misc. household and hardgoods immediately after produce. Nursery and greenhouse items in season. Poultry auction selling chickens, rabbits, goats, fancy birds, etc. every Friday year around

### Auction Starting Times

Eggs, Produce and Misc. - 5:00 P.M.

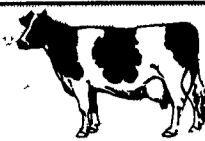
Poultry - 6:00 P.M.

### Auction Check In Times

Fridays 7:30 A.M. till Sale Time

## Dairy and Livestock Sales

### NEW HOLLAND SALES STABLES, INC.



New Holland, Pa.  
Located 12 Miles East of Lancaster, just off Rt. 23

### DAIRY SALE WEDNESDAY, JUNE 3, 1998

10:30 A.M. OPEN & BRED HEIFERS  
12:00 NOON BULLS, FRESH COWS, SPRINGERS

### Weekly Consignors

- Merle Breneman
- Dale Hostetter
- Marvin Eshleman
- Jim Hostetter
- Leroy Smucker
- Daniel Z. Stoltzfus

**Note To Consignors!**  
Please send all information along with your cattle Tues. Fresh date, breeding dates, milk weights, TB & blood test charts with your trucker.

Load of Fresh 1st and 2nd Calf Cows  
Sell From New York

Also Local Fresh and Springer Cows Sell

### NOTE:

June 6, 1998, 2nd Springer Heifer Sale -- 10:00 A.M.  
See Ad Below.

Sale Managed By

New Holland Sales Stables, Inc.

Barn 717-354-4341 Fax 355-0706 Home 717-397-5538

Norman & David Kolb, Mgrs. 61L

### NEW HOLLAND SALES STABLES, INC.



New Holland, Pa.  
Located 12 Miles East of Lancaster, just off Rt. 23

### 2nd Spring Heifer Sale

June 6, 1998

Saturday 10:00 AM



Approximately **800** Head Sell  
Registered and Grade Heifers  
All Ages Sell - Fresh, Bred, Short Bred and Open,  
And Service Age Bull Sells

Call Us Now With Your Consignments--- Our 1st Sale We Had 1200 Head And The Demand For Good Heifers Was In New Holland -- We Expect The Same This Sale --

40 Registered Heifers Sell from a New Jersey Herd  
Also 15 Registered Heifers Bred, from Wayne Co. Herd.

Our Sale Order: 10:00 A.M. Bred Heifers (Springers)  
12:00 Noon, Fresh Heifers And Bulls  
Followed by Short Breds, Open Heifers, And Small Heifers and Calves.

Note-- Pa Heifers Don't Need Health Charts-- However -- We Expect Many Out-Of-State-Buyers Who Will Require 30 Day TB and Blood Test-- Your Heifers Will Bring A Premium If You Have Charts-- Out of State Buyers, Please Bring Letter of Credit. Thank You!

Sale Managed By

New Holland Sales Stables, Inc.

Barn 717-354-4341 Fax 355-0706 Home 717-397-5538

Norman & David Kolb, Mgrs. 61L

MILK AMERICA'S HEALTH KICK