

1978 GMC Brigidere, 6V53 Detroit diesel, 25,000 miles on new engine, 10 speed trans., 33,500 GVW, good Michelen radial tires, double frame, hyd. PS, mechanical sound, but needs some cosmetics.....\$7,500 OBO

1981 1700 IHN, 9 liter diesel, new rebuilt, 5-speed trans. & 2-speed rear, almost new Michelen radial tires w/Daffin mobile feed grinder, slowed down mill, hyd. feed table augers, hyd., air-locks & concentrate auger w/rebuilt 471 Detroit. Truck & mill in excellent condition. Will separate.....\$25,000 Complete

Daffin Mill Parts:

A complete rotor w/pulleys
Singer feed for feed table
Roughgizer complete

Rear mixer shield, fair cond.

(2) Hyd. tanks

Pneu-weigh system complete, should be rebuilt **Make Offer**

9 speed Spicer, trans., good cond. \$500 OBO

2-way radio system

(3) 25 watt mobil radios

(1) 40 watt mobil radio

10' base antenna, (3) mobil antennas (2) 110 volt to 12 volt converters, (1) power booster. 80' tower \$1500 OBO - Will separate.

ED'S CUSTOM MILLING

7500 Rice Road, Shippensburg, PA 17257

717-530-1778 • 717-532-3842



1981 S-1950
35,000 GVW, Rebuilt DT 466, 13 spd.
Hay Rack + Body 26' Long.
Excellent condition.
(724) 349-4010

CASH FOR USED DIESEL TRUCKS!

WE NEED 1/2 TON TO ONE TON:

- FORD DIESELS
- SUPERCABS
- CREW CABS
- DODGE CUMMINS
- 2WD OR 4X4
- DUALIES
- DUMPS
- UTILITY BODY
- FLAT BEDS
- CAB & CHASSIS
- SUPER DUTIES

LOW MILEAGE ONLY PLEASE

Before you sell or trade your diesel in somewhere else for **LESS**.

CALL US!

We Pay More for Used Diesel Trucks Than Anyone.

TRY US!

717-949-2000

OR 610-678-3243

Ask for Smokey or Kay



RD 7, Box 405
Lebanon, PA
17042

WILLIAM H. WESSELS USED CARS



93 Ford Aerostar 5-Pass, V-6, Auto, PS, PB, AC, 76,428 Miles \$5,990



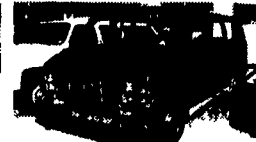
87 GMC Suburban High Sierra 4x2, 8 Pass., Local Trade, Nice \$5,990



94 GMC K1500 Ex. Cab, 6.5 Turbo Diesel, 73,206 Miles \$16,900



95 Ford F150 X Cab, Short Bed, 4.9 6 Cyl, 5 Spd, AC, PS, PB, 64,380 Miles \$9,900



85 Dodge B350 8-Pass Van, Ugly But Functional \$2,190



86 Chevy Scottsdale 4x4, 305 V8, Auto, PS, PB, 145,307 Miles \$4,990



91 Chevy Ex Cab 4x2, 350 V8, 5 Speed, 186, 207 Miles \$6,990



93 Chevy Ext. Cab, 4x4, 350 V-8, Auto, AC, 103,206 Miles \$14,900



90 Ford Bronco XLT 5.8, Auto, AC, 80,107 Miles \$8,990



95 GMC Yukon 4x4, 350 V8, Auto, Nicely Equip, Barn Doors, 38,206 Miles \$23,900



94 Ford F250 X-Cab, 4.9-6cyl, Auto, PS, PB, No AC, 87,454 Miles \$9,900



87 Chevy K20, 4x4, Only Average, 181,207 Miles \$4,990



96 Ford Aerostar, 7 Pass., V-6, Auto, PS, PB, AC, 60,182 Miles \$8,990



90 Chev C1500 Pickup, 350 V-8, Auto, PS, PB, AC, 51,521 Miles \$9,900



81 International 20-passenger Bus w/Wheelchair lift, 16,000 Original Miles \$8,990



96 GMC 7000, 14' Stake Truck, 23,000 GVW, 7.4L, 54,208 Miles \$7,990



91 Ford E250 Cargo Van, 6 Cyl., Auto, 118,206 Miles \$6,990



95 Chevy Tahoe LS, 350 V-8 Auto, Nicely Equipped. \$21,900



91 Chev K2500 Ex Cab 4x4, 350 V-8, Auto, PS, PB, AC, 113,387 Miles \$11,900



95 Subaru Outback Wagon, 4x4, 4 cyl, Auto, PS, PB, AC, 46,148 miles \$14,900



89 Chevy Suburban Silverado 4x2, Barely Average, Defective Motor, Driveable \$2,490



95 Chevy K2500 Ex. Cab 4x4, 8,600 GVW, 350 V8, Auto, AC, 73,206 Miles \$17,900



95 Ford F150 XL, 4.9, 6 cyl, Auto, PS, PB, No AC, 40,206 Miles \$5,990



86 Chevy Flea Marketter, 350V-8, Auto, AC Very Inexpensive Mobile Show Room \$2,990



89 Chevy Suburban 4x4, 350 V-8, 3 Seats, Rear AC, Tail Gate, 145,608 Miles \$6,990



94 Chevy 18' Alum. Walk-In Van, 350 V8, Gas, 90,206 Miles, 1 Owner-Nice! \$15,900



95 Ford F150 XLT X-Cab 4x4, 302 V-8, Auto, Nicely Equipped 49,708 Miles \$18,900



91 Chevy Suburban K2500 4x4, 350 V-8, 119,112 Miles, No Rear Seats \$7,990



91 Chevy Silverado K1500, 350 V-8, Auto, AC, 37,207 Miles \$13,900



94 Ford F150 Work Truck, 6 Cyl., Straight Stick 57,206 Miles \$7,990



Many Mini Cargo Vans, '93 & '95 \$3,990 to \$6,990



95 Chevy Suburban 4x4, 350 V8, 66,927 Miles \$22,900



88 GMC - 2 Car Hauler, Diesel \$10,900



89 Util Master Cargo Van 4 Cyl, Auto, PS, PB, AC 78,126 Miles \$5,990



89 Chev 3500, Enclosed Utility Body 350 V-8, Auto, PS, PB, 185,918 Miles \$6,990



93 GMC Enclosed Utility Bucket Truck, 350 V8 \$18,900

WILLIAM H. WESSELS USED CARS

811 Route 15 Dillsburg, PA
1-800-440-4433 1-717-432-2918
Notary Public - Temporary Tags

FORD FORD FORD FORD FORD FORD FORD

KELLER BROS.

(Buffalo Springs) Lebanon, PA

717-949-2000 or 1-800-363-2767

HEAVY DUTY & LIGHT TRUCK CENTER

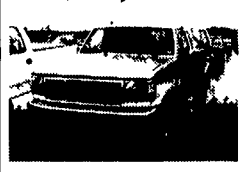
1999 FORD F550 DUMP TRUCK
Power Stroke Diesel, 4x4, AT, A/C, 12 Ft. Dump Box



1997 FORD F350 CREW CAB 4x4
Turbo Diesels (1 In Stock)



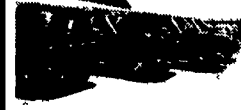
1994 FORD F150 XLT 4X4
AT, V8, Green & White \$15,495



3 WINDSTARS
1-1995, 2-1996 All Loaded, Dual Air, Ready To Travel



JUST TRADED FLEET OF 5 4 CREW CABS
1 Ton Pickups All Automatics Starting At \$3,995



1996 FORD F350 CREW CAB Gas, 5-Speed, XLT, 4x4



1998 FORD F150 SUPER CAB
Off Road, AT, V8, XLT, 10,000 Miles, Local Trade



1991 FORD F150 SHORT BOX
Very Clean, Low Mileage, Red JUST ARRIVED



(2) 1997 FORD F450 STAKE BODIES
Power Stroke Diesel, 4x2 AT, A/C, 6 Speed, Dual Rear Wheels, XLT Trim



1994 BUICK LESABRE CUSTOM
Low Mileage, Clean



(2) 1993 MERCURY SABLES STATION WAGONS
Third Seat, I-GS, I-LS, Loaded Starting At \$9,700



1996 FORD EXPLORER SPORT
AT, A/C, 4x4, Moon Roof, PW, PL, C,T



99 FORD F-350 CREW CAB 4X4 DIESEL
Chassis Cab JUST ARRIVED



COM-PAC SAILBOAT
16ft. W/Trailer Price Reduced! \$2,250



1996 FORD ASPIRE
2 Dr., AT, A/C, Cassette Sporty Red, Balance Factory Warranty



1994 CHEV C30 4X4 DUMP
5.7 V8, AT, Local Trade



94 FORD MUSTANG GT CONVERTIBLE
Leather, Low Miles, 5 Spd., Green



1994 FORD RANGER SUPER CAB
4x4, AT, 4L, A/C, XLT JUST ARRIVED



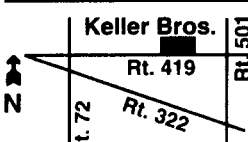
1985 SHASTA CAMPER TRAILER
Local Trade, self Contained (Very Nice)



1991 FORD F150 XLT 4x4
AT, V8, Loaded, Low Mileage, Green - Sharp



1999 FORD F250
Heavy Duty, AT, A/C, White



KELLER BROS. FORD HAS SERVED CENTRAL PENNA. AREA FOR MORE THAN 75 YEARS.

FORD FORD FORD FORD FORD FORD FORD