

(2) '82 Mack Tri Axle
 (1) '85 Mack Tri Axle
 Call For Prices!
Curry Supply Co. Curryville, PA
1-800-345-2829

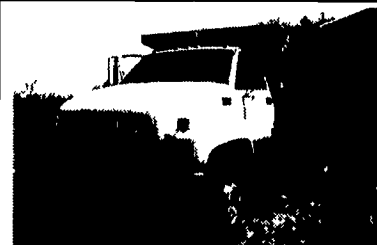
Liquid Manure Spreading Business
 Morgantown Area, Serving 4+ Counties
 5000 gal Vac Truck, (2) Manure Pumps (Lagoon & Pit),
 11-year Established Customer Base Netting \$45K
\$30,000 for all
610-286-9708

LEFEVER BROS. CHEVROLET CHEVY TRUCKS

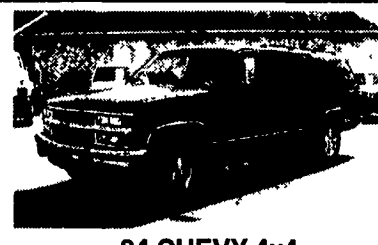
406 U.S. Route 15 North, Dillsburg PA
 Quality Dealer Since 1921 **717-432-9611**



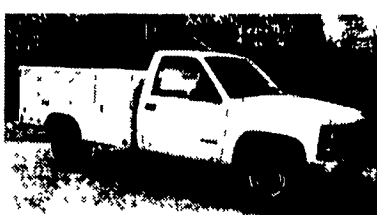
98 CHEVY C70
 Cab & Chassie
 259" Wheelbase
 (can shorten),
 25,950 GVW,
 190 HP
 Cat. 3126
 AC



97 CHEVY C-60
 Low Pro 10' Gallon Dump,
 25,900 GVW, 366 Gas



94 CHEVY 4x4
 Suburban Silverado, Low
 Mileage, Bucket Seats
\$21,900



98 CHEVY HD 3/4 TON
 Reading Utility Body,
 V-8, Auto, AC



98 CHEVY K30 DUMP w/CHUTE
 12,000 GVW, Hinged Sides
 350 HP Gas, Auto.

PRE-OWNED CARS	PRE-OWNED TRUCKS	PRE-OWNED MPV'S
'94 PONTIAC FIREBIRD A/C, 5 Speed, Bright Red	'89 FORD F250 XLT 6600 GVW, Light Duty, 6 Cyl., 5 Spd., AM/FM/ Super Clean	'96 CHEVY BLAZER LS A/C, Auto, AM/FM Cass., Local Trade, Sharp!
'96 FORD TAURUS GL A/C, A/OC, PDL, PW, AM/FM Cass., Power Seats, Beautiful Rose	'96 FORD RANGER XLT 6 Cyl., Auto., AM/FM Cass., One Owner, Priced To Sell	'95 FORD WINDSTAR GL A/C, Auto., AM/FM Cass., 3 to Choose From
'96 FORD CONTOUR Sdn., A/C, A/OD, AM/FM Cass., "3" to Choose From - Must See	'97 F-150 4x4 XLT V-8, A/OD, A/C, Power Equipment	'93 FORD EXPLORER SPORT 4x4, A/C, Auto, AM/FM Cass., Must See - Super Clean
'96 LINCOLN TOWN CAR Signature Series, Fully Loaded with Luxury, 3 to Choose From	'94 FORD F-150 4x4 Supercab, V-8, A/C, A/OD	'94 FORD BRONCO EB 4x4, A/C, AutoD, AM/FM Cass., Fully Loaded
'93 TAURUS GL WAGON 3.0L, A/OD, A/C, 53,000 Miles	'96 F250 4x4 A/OD, A/C, 7.3L Diesel & More	'95 WINDSTAR LX Front & Rear A/C & Heat, 30,000 Miles
'89 MAZDA RX-7 A/C, 5 Speed, 69,000 Miles	'90 FORD F-150 S/CAB XLT A/C, AM/FM Cass., Auto Lots of Extras	'95 JEEP WRANGLER 5 Spd., AM/FM Cass., 4 WD Hard Top, Super Clean, Fun to Drive
'95 LINCOLN CONTINENTAL Sunroof, Luxury, 8 Cylinder Fun To Drive	'93 RANGER XLT V-6, Extended Cab, A/C, 5 Speed	'95 GEO TRACKER 4x4 LSI A/C, Auto, AM/FM Cass., Convertible, Fun to Drive
'95 MERCURY SABLE GS SDN A/C, A/OD, AM/FM Cass., Super Clean, Well Taken Care Of	'94 DODGE 1500 ST 4x4, Auto, V8, A/C, AM/FM Cass., Super Clean	'95 JEEP GRAND CHEROKEE 4x4, Laredo, A/C, Auto., AM/FM Cass., 5 To Choose From
'96 PONTIAC SUNFIRE SE A/C/S, 5 Spd., AM/FM Cass., Only 12,000 Miles, One Owner	'95 CHEVY C1500 WT A/C, Auto, AM/FM, Dependable Work Truck	'95 JEEP CHEROKEE COUNTRY 4X4, A/C, Auto., AM/FM Cass., A Must See
'94 CHEVY CAVALIER CONV. Rare Beauty With V-6 Engine	'93 FORD F350 CREW CAB XLT Diesel Turbo, A/OD, Lots of Extras, Super Clean	'92 CHEROKEE LAREDO 4.0L, AT, AC, 63,000 Miles

ENGLE-RISSINGER AUTO GROUP

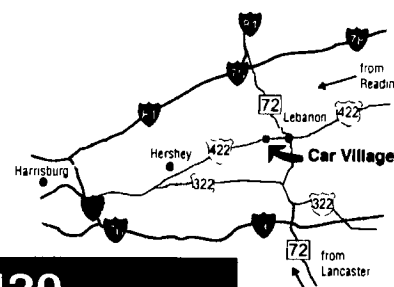
Midway Between Halifax And Millersburg • 717-896-3421 • 1-800-242-8075
 HOURS: Monday-Friday 8:30 AM - 8:30 PM; Saturday 8:30 AM - 3:00 PM

Business Hours:
 Mon.-Fri. 9 to 9;
 Sat. 9-4

RTE. 422 WEST
 LEBANON, PA
 (Across From Lebanon
 Valley Mall)

CAR VILLAGE

HEAVY DUTY TRUCKS



PHONE 717-274-2000 Toll Free 1-800-650-1420

<p>4x4 CLUB CAB DUALLY 95 DODGE Black Beauty Is Here, Cummins Turbo Diesel, AT, A/C, 4:10 Gears, Tow Pkg, Chrome, Simulators, 32,000 Miles</p>	<p>QUAD CAB - 4 DOOR, 98 DODGE 3500 4X4 Almost New, Only 700 Miles, Cummins Turbo Diesel, 5 Spd., AC, 4:10 Limited Slip Axle, Great Tow Machine</p>	<p>5 SPD. DUALLY 97 DODGE 3500 SLT LARAMIE Awesome Tow Machine, Cummins Turbo Diesel, 5 Spd., AC, Tilt, Cruise, Heavy Duty Frt. & Rear Dana Axles, 4.10 Gear, New Truck Warranty</p>	<p>5 SP. CUMMINS CLUB CAB, 4 WHEEL DRIVE, 95 DODGE 2500 Very Clean, 50,000 Miles, Tow Pkg.</p>	<p>14,000 GVW 97 FORD SUPER DUTY ALUMINUM CUBE VAN Haul The Big Loads, 16 Ft Aluminum Body, Powerstroke Diesel, AT, Roll Up Rear Door, Only 15,000 Miles, Remaining New Tk. Warranty</p>
<p>5 SPEED CLUB CAB DUALLY 97 DODGE 4 WHEEL DRIVE Powerhouse Cummins Turbo Diesel, 5 Sp., A/C, Loaded Laramie SLT, Leather Seats, CD Player, Tow Pkg.</p>	<p>5 Sp. Cummins 90 DODGE HEAVY DUTY, 3/4 Ton, Power to pull Cummins Turbo Diesel 5 sp., A/C, Gooseneck Hitch. Give It A Try.</p> <p>\$7,900</p>	<p>4X4 CLUB CAB 95 DODGE 250 LE Nice Tk - Only 65,000 miles, Cummins - Auto, A/C, Tow Pkg. Real Clean</p>	<p>MADE TO TOW 5 SP DIESEL DUALLY 91 DODGE 350 LE Very Strong. Ideal Tow Machine, Cummins Turbo Diesel, 5 Sp. A/C Class 3 Hitch, Excellent Body, Only 74,000 Miles</p>	<p>33,000 ORIGINAL MILES 88 FORD F350 Long 161 W.B Chassis Cab, 84" C A 351 V8, Auto, Dual Tanks, Big Swing Out Mirrors, Ready For Your Body</p>
<p>2-WHEEL DRIVE 96 CHEVY CREW CAB DUALLY Perfect, Like New, Only 11,000 Miles, High Output, 6.5 Turbo Diesel, Auto, AC, Tilt, Cruise, 4:10 Limited Slip Gear, Nice Tow Machine</p>	<p>MECHANICS SPECIAL 90 FORD F250 XLT 4 Wheel Drive, 5 Spd. Diesel, 7.3 Diesel, Lock Out Hubs</p>	<p>WESTERN HAULER 94 CHEVY CREW CAB DUALLY Only 58,000 Original Miles, Strong 454 f i. V8, Auto, A/C, Gooseneck Hitch, This Truck Will Tow Big Loads \$17,900</p>	<p>4 WHEEL DRIVE 94 CHEVY 4 DOOR DUALLY Excellent Tow Machine, 5sp, High Output 6.5 Turbo Diesel 4:10 gears, Gooseneck Hitch, Only 40,000 Miles, New Tk Warranty</p>	<p>SUPER DUTY CHASSIS 94 FORD SUPER DUTY Big 15,000 GVW, Turbo, 7.3 Diesel, 5sp, A/C, Dual Tanks, Long 161 W B</p>
<p>4x4 SUPER CAB DIESEL, 94 GMC SLE Good Lookin & Only 48,000 Miles, 6.5 Turbo Diesel, AT, A/C, Capt. Chairs, Console, Aluminum Wheels, Remaining Factory Warranty \$18,900</p>	<p>4X4 UTILITY 95 FORD F350 XL 460 V8 Auto, 9ft body, Ladder Racks, will sell as Chassis</p>	<p>1 TON DIESEL 4x4 - 2 Available 97's Powerstroke Turbo Diesel, AT, A/C, Tow Pkg, Aluminum Wheels</p>	<p>21,500 GVW - 87 FORD F600 DUMP 370 V8, 5 Sp. Trans., 2 Speed Axle, Very Nice, Clean Dump</p>	<p>4-Door Crew Cab, 94 CHEVY, Room for the Family or Work Crew. Local 1-Owner Trade, Only 50,000 Miles, 6.5 Turbo Diesel, AT, A/C, Silverado Pkg. Beautiful</p>
<p>INSULATED BOX 12 Ft. Aluminum, Excellent Condition \$2,500</p>	<p>4X4 RACK BODY - 95 CHEVY 3500 Nice & Clean, Only 19,000 Miles, V8, 5 Spd., 9 Ft. Body</p>	<p>5 SP. SUPER CAB 4X4 94 FORD F250 XLT A Must See - Very Clean 51,000 Miles, Turbo, 7.3 Diesel, 5 Sp., A/C, Capt. Chairs, Tow Pkg., Runs Great</p>	<p>4x4 Club Dually 93 Dodge LE Power To Tow & Room For The Family, Very Clean, Only 45,000 Miles, Cummins Turbo Diesel, AT, A/C, Tow Pkg, Lock Out Hubs</p>	<p>WE GOT ONE 99 FORD 350 SUPER DUTY 4x4 Crew Cab, Powerstroke Turbo Diesel, AT, All Options, Great Big Trade-ins. \$\$\$ For Your Trade</p>