



1978 Chev Grain Dump & Cattle Gate,
27,500 GW, Recent Rear Brakes, Drums
& Lining in Good Condition. Lanc. Co.
(717) 626-6768
No Sunday Calls



1985 Mack Super Liner
350 Cummins, 10-Spd. Trans., Good Rubber,
New Brakes, AC
\$9,500
717-529-2512 No Sunday Calls

CHEV
Silverado, 350 Engine,
400 Turbo Trans,
11,000 GVW, 11 ft. Bed.
Call **717-866-2135**
ask for Alvin
734-2000

Stock Trailer: 1987, Bo-
nanza, 20x6x6 1/2
gooseneck, good floor, no
rust, new inspection,
\$2,800. (717)423-6758.

Tandem axle dump truck.
717-463-3701
WANT tanker trailer, suit-
able for driveway sealer
storage. 1-800-373-3703.

USED TRUCKS



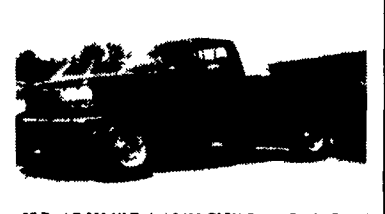
97 GMC SL 2500 Ext-Cab 4x4 350 Vortec Eng AT
AC AM-FM-Cass Cruise Tilt 3.73 Limited Slip Rear
Local One Owner 28,000 Miles Green
\$22,900



97 GMC Crew Cab Dual Wheel SLV 454 Vortec AT/OD
PL PS PW Cruise Tilt AM-FM-Cass CD 4.10 Lsd Slip
Rear Blue 12,000 Miles
\$26,500



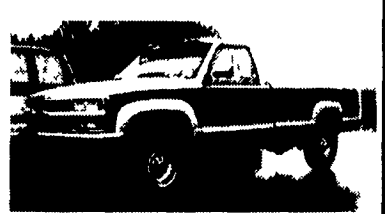
95 Chevy K 2500 Cheyenne 4x4 350 F1 Eng AT AC
AM-FM Cass Cruise Sliding Rear Window 8600
GVW 4.10 Limited Slip Rear Red 51,000 Miles
\$16,700



97 Ford F 250 XLT 4x4 8600 GVW Power Stroke Diesel
5 Spd PS PB AC PW PDL 4.10 Limited Slip Rear
23,000 Miles
\$24,900



95 Chev Cube Van 14 Ft 10,000 GVW 350 Ft Auto PS
PB AC 20,000 Miles Pa One Owner
\$17,400



94 Chev K-2500 Silverado 4x4 6.5 Turbo Diesel AT AC
Loaded 8,600 GVW 4.10 Limited Slip Rear 45,000 miles
Black & Silver
\$18,300

MARTIN'S AUTO SALES

1025 W. Main St. New Holland, PA 17557
(717) 656-6621

4294 E. HARRISBURG PIKE
DEPARTMENT LF CATALOG
MIDDLETOWN, PA 17057
(717) 944-0318
Route 230 Between
Elizabethtown & Middletown

**FREE CATALOG
CALL OR WRITE
NOW!!**

**MOST CLASS III HITCHES
\$79⁹⁹ to \$89⁹⁹**

**SAND BLASTERS &
BLAST CABINETS**

**NEW
GAS TANKS,
RADIATORS**

SAVE \$\$\$

**TOOLS
AND
EQUIPMENT**

**AUTOBODY PARTS,
PAINTS & SUPPLIES**

**BUILD OR REPAIR YOUR
TRAILER. WE HAVE PARTS.**

USED 4x4's Pickup's, Bronco's & Blazer - Call For Our Low Prices

NEW UTILITY TRAILERS
3,000 GVW, Extra Heavy Frames
w/Treated Lumber Deck, Lights,
Chains, Etc Included!!!
5'x10' Deck.....**\$750**
6'4"x12' Deck.....**\$875**
Add-On Landscape
Ramp/Gate.....**\$145**

**WE BUILD OUR
OWN TRAILERS**

"NEW" 16' Deck Car Hauler
Has Two 24" Wide Diamond Steel Runners, Tube Steel Frame,
4-Wheel Brakes Safety Breakaway Kit & Full Lighting
Beavertail & Ramps, Removable Left Fender & More For **\$1,799**

Hours: Tues.-Fri. 9 AM - 6 PM Saturday 9 AM - 2 PM Closed: Sunday & Monday

**OVER
120
TRUCKS**

Preferred Warranties
Available
on Most
Trucks

Bobby Gerhart's

Truck World

Mon. - Fri. 9-8, Sat. 9-3

2400
E. Cumberland St.
Rt. 422
Lebanon, PA
17042
717-273-7995

97 DODGE RAM 2500 CLUB CAB 4x4
Laramie SLT Pkg. Cummins Turbo Diesel.
AT, A/C, Most Options 35,000 Miles

95 FORD F350 CREW CAB DUALY
Power Stroke Diesel, XLT, AT, A/C, C, T,
PW, PL, Alum. Wheels, Fiberglass Cap,
73,000 Miles, Dk Green, #F727

96 FORD F250 SUPER CAB 4x4
Power Stroke Turbo Diesel, Short Bed, XL
Trim, 5-Speed, AC, C.T. Dual Tanks, Only
23,000 Miles, Black #F651

93 FORD F250 XLT
7.3 Diesel, AT-OD, A/C, C, T, PL, PW, Dual
Tanks, Running Boards, 65,500 Miles,
Blue/Lt Blue, #F649

89 IVECO 14FT. STAKE BODY
Turbo Diesel, 5-Speed, PS, PB, 11,000
GVW, 99,000 Miles #IV101

85 FORD F250 HEAVY DUTY
6.9 Diesel, 4-Spd., AM/FM Cass, C,T, Only
95,000 Miles #F733

95 CHEV K2500 SUBURBAN
4x4, 6.5 Turbo Diesel, LT Pkg., AT, Dual
A/C, Leather & Lots Options, Alum.
Wheels, 64,000 Miles, Dk Green #C470

94 DODGE RAM 3500 DUALY
Cummins Turbo Diesel, AT, A/C, PW, PL,
C,T, 45,000 Miles, Red/Driftwood #D212

93 FORD E350 SUPER VAN
15 Passenger, XLT, At, 351 V8, Dual A/C & Heat,
PW, PL, White, 75,000 Miles #F691

**90 FORD F350
COVERED UTILITY BODY**
351 V8, AT, A/C, AM/FM, Dual Tanks,
85,000 Miles, White, Very Nice #F676

90 FORD SUPERDUTY CAB & CHASSIS
7.3 Diesel, AT, PS, PB, Dual Tanks, 111,000
Miles, White, Ready For Your Body, #F725
(also 1991 XLT Chassis in Stock)

**94 CHEV K3500 4X4 CONTRACTOR
DUMP** 6.5 Turbo Diesel, 5-Spd, A/C,
Am/Fm Cass, Class III Hitch, Tool Box,
70,000 Miles, #C451

96 GMC 2500 EXT. CAB
Heavy Duty, Sierra Pkg, 454 Vortec, AT, A/C,
Cruise 31,000 Miles Red #G192

95 GMC K-2500 EXT. CAB 4X4
6.5 Turbo Diesel, AT, A/C, C, T, SL Trm,
118,000 Miles, White, Looks & Runs Good
#G190

92 FORD F350 SUPER CAB DUALY
Diesel, Centurion Astin Pkg, XLT Trm, AT,
A/C, Most Options, 41,000 Miles

90 FORD F350 4X4 UTILITY DUMP
460 V8, AT, AM/FM, PS, PB, Dual Tanks,
Blue #F734

94 CHEV K3500 4X4 CONTRACTOR
DUMP 6.5 Turbo Diesel, 5-Spd, A/C,
Am/Fm Cass, Class III Hitch, Tool Box,
70,000 Miles, #C451

88 CHEV C30 CREW CAB CHASSIS
350 V8, 4-spd, PS, PB, Good Condition
#C467

97 FORD F350 CREW CAB 4x4,
Power Stroke, Diesel, AT, AC, XLT Pkg, Alum
Wheels, PW, PL, C.T. Only 18,000 Miles,
Black #F714

97 CHEV 1500 EXT. CAB
3-Dr, 4x4, 350 Vortec, AT, A/C, Silverado
(most options), Only 4,000 Miles, Blue
#C472

90 FORD F250 SUPER CAB 4X4
7.3 Diesel, XLT, AT, A/C, PW, PL,
C,T, Teal/Grey Int., Hi Miles #F702

91 DODGE UTILITY DUMP
Cummins Turbo Diesel, AT, AM/FM,
Dual Wheels, Utility Body w/Dump
Insert, 64,000 Miles #D210

94 CHEV. 3500 10FT. FLATBED
6.5 Turbo Diesel, 5-speed, A/C,
#473 85,000 Miles, Tool Box

95 DODGE RAM 3500 4x4
Contractor Dump, Cummins Turbo Diesel Plow,
5-Spd. A/C, AM/FM, 25,000 Miles