

Farmers Produce Auction

MOUNT HOPE, OHIO
May 26, 1998

Market supplied by auction.

ASPARAGUS: 1.50-1.75 LB.
RHUBARB: .50-1.00 LBS.
STRAWBERRIES: 1.75-2.56 QT.
TOMATOES: HYDROPONIC .95-1.10.
FLOWERS: ANNUALS 2.00-5.50;
HANGING BASKETS 4.00-7.50; POT-
TED GERANIUMS .75-.85.
VEGETABLE PLANTS: 1.00-5.00
FLAT.

Leola Produce Auction

Leola, PA
May 26, 1998

Report Supplied by Auction

-ASPARAGUS: 1.55 12 OZ. BUNCH.
BEANS: GREEN 25.00-45.00 BU.
LETTUCE: ICEBERG 2.75-5.75 12-18
CT.; ROMAINE 5.50-8.00 12-18 CT.;
GREEN AND RED LEAF 7.50-10.50
12-18 CT.
ONIONS: SPRING 9.50-15.50 40 CT.
BUNCH.
PEAS: SUGAR 19.00; SNAP 15.50,
EACH 10 LBS.; HULL 9.50-14.00.
RADISHES: 9.50-14.50 40 CT.
BUNCH.
RHUBARB: 6.50-10.50 15 LBS.

SPINACH: 8.75-14.00 BU.
STRAWBERRIES: 12.00-21.00 8 QT.

FLAT.
TOMATOES: HYDROPONIC
8.00-11.00 10 LBS.; SMALL 15.00-25.00,
LRGE. TO EX. LRGE. 25.00-32.00 25
LBS.

ZUCCHINI: 9.00-16.00 1/2 BU.
FLOWERS: BEDDING PLANTS
4.25-7.25 FLAT, 40-1.10 POT.
PERENNIALS AND HERBS: 3.00-5.75
FLAT, 40-95 POT AND 1.50-3.75 POT;
GERANIUMS .55-90 POT; HANGING
BASKETS FLOWERING 3.25-6.75,
FOLIAGE 3.00-5.50.

VEGETABLE PLANTS: CANTA-
LOPE, WATERMELON, CUCUMBER
2.75-6.50; TOMATO, EGGPLANT, PEP-
PER 3.00-5.25.
NEXT WEEK'S SALE DAYS ARE
MON., TUES., THURS., FRI., 9 A.M.

New Jersey Fruit (seas)

BRIDGETON

FEDERAL-STATE 5/25/98 Weather:
overcast 60 Auction sales prices to grow-
ers. VINELAND, NEW JERSEY

-ASPARAGUS: Bunched Med/Large
(583) 10.50-22.50 avg 19.52 Small (94)
20.00-26.50 avg 21.88 ---BEETS: 12S
(682) 5.20-10.00 avg 7.23 ---CHINESE
CA various crt chinese cab (602) 5.70-6.90
avg 6.54 ---ENDIVE: crt (1075) 7.20-9.75

JAMES & CLARK, LLP Attorneys-At-Law

Mark L. James James R. Clark

Estate Planning for Farm Families

- Wills, trusts and tax planning
- Charitable giving

Business Planning for Farm Families

- Farm partnerships and corporations
- Succession Planning/Farm Transfers

Real Estate

- Tax-free exchanges of real estate
- Real estate settlements
- Tax planning for sale of conservation easement

Estate Settlements

- Prompt and courteous settlement
- Tax planning during settlement

1907 Division Hwy
Ephrata, PA 17522
(717)355-2800

Lancaster Farming, Saturday, May 30, 1998-A13

avg 8.50 ---ESCAROLE:
(1596)9.60-15.75 avg 13.31 ---GREENS:
broc rabe (40) 8.75-9.00 avg 8.91 Collards
16s (258) 6.30-6.70 avg 6.43 Dandelion
14s (422) 9.50-11.25 avg 10.53 Kale 16s
(50) 6.50-6.50 avg 6.50 Kohlrabi 12s (98)
7.60-7.80 avg 7.

69 Swiss Chard-green (323) 18.25-23.00
avg 20.95 Swiss Chard-red (185)
7.00-13.50 avg 10.58 ---HERB: 4/5 buct
bchd Arrugula (148) 15.50-20.50 avg
17.91 Cilantro-bchd (325) 8.40-11.00 avg
9.72 Cilantro-lse (398) 8.50-9.75 avg 9.18
Dill (599) 15.00-18.75 avg 17.48 sm ctn
Basil (201) 9.00-10.50 avg 9.84 ---
LEEKS: crt bchd 12s (369) 9.10-12.25 avg
10.43 ---LETTUCE: Bibb (51) 6.10-6.20
avg 6.16 Boston (1035)7.00-11.00 avg
9.96 Leaf Green 24s (2923)6.00-11.00 avg
6.87 Leaf Red (1123)9.00-12.75 avg 10.65
Romaine 24s (4885)8.50-12.75 avg 11.16
---PARSLEY: crt Curley 60s
(1135)13.75-19.50 avg 16.78 Plain 60s
(717) 18.75-24.00 avg 20.61 ---PEAS:
Green (216) 21.50-25.50 avg 23.57 ---
SPINACH: Loose (160) 18.00-20.00 avg
18.75 ---SQUASH: 1-1/9 bu Green-med
(96) 6.40-7.00 avg 6.65 1/2 bu Green-sml
(168) 6.40-6.40 avg 6.40 ---TURNIPS:
(537) 6.70-8.00 avg 6.82

Kutztown Produce Auction

Fleetwood, PA

May 19 and 21

Hay and Straw at 9:00 a.m. Sat. followed
by produce

Report Supplied by Auction
ASPARAGUS: .40-1.50 LB.
EGGS: .30-.70 DOZ.
ONIONS: SPRING .20-.25 BUNCH.
TOMATOES: GREENHOUSE
1.00-1.80 LB.
FLOWERS: ANNUALS 2.50-10.00
FLAT, .15-3.50 POT; PERENNIALS 3.00
FLAT, .25-5.00 POT; GERANIUMS
.50-8.50; DRACINE SPIKES .40-1.00;
SUNFLOWERS .50-2.00 POT; HANG-
ING BASKETS 3.00-8.00; PLANTERS
1.50-12.00.
NURSERY STOCK: TREES 5.00-7.00;
SHRUBS 2.00-10.00.
HERBS: .10-1.25.
VEGETABLE PLANTS: 1.00-10.00
FLAT.

Snyder County Produce Auction

May 18, 20, 22

Port Trevorton, PA

Report Supplied by Auction

ASPARAGUS: .75-1.70 LB.
ONIONS: SPRING 20-30 BUNCH.
PEAS: SUGAR 1.70-2.20, SNAP
1.00-1.60, BOTH BY THE LB.
RADISHES: .25-.35 BUNCH.
SPINACH: 10.00-14.00 BU.
STRAWBERRIES: 2.00-2.85 QT.
FLOWERS: ANNUALS 1.00-8.00;
HANGING BASKETS 2.00-7.00.
NURSERY STOCK: 2.00-12.00.
SALES DAYS MON., WED., AND FRI
AT 11 A.M.

LEINBACH WHOLESALE PRODUCE AUCTION

Open Every Tuesday,
Thursday & Friday at 10 A.M.



NOW SELLING LOCAL, AND FRESH
SOUTHERN PRODUCE, FLOWERS & SHRUBS
PRODUCE REPORT FOR MAY 20, 22 & 26

Asparagus - .90 to \$1.40 lb.
Spring Onions - \$6.00 to \$8.00 1/2 Bu.
Spinach - \$3.00 to \$5.00 1/2 Bu.
Sugar Snow Peas - \$12.00 to \$20.00 10 lb.
Sugar Snap Peas - \$15.00 to \$18.00 10 lb.
Strawberries - \$12.00 to \$24.00 8 qt. flat

VINE RIPE SOUTHERN PRODUCE

10,000 Cantaloupes, Small to Large - \$1.00 to
\$2.50 each
1200 Vine Ripe Tomatoes - \$12.00 to \$21.00
30 lb. box
4000 Watermelons, Small to Large - \$3.50 to
\$4.75 each
800 Sugar Baby Melons, Small to Large - .50 to
\$2.00 each
Peaches - \$12.00 to \$14.00 1/2 bu.
Annuals, All Varieties - \$3.00 to \$7.00 flat
Perennials, All Varieties qt. pots - .35 to \$1.25
each
Gallon Pots Perennials - .35 to \$3.00 each
Trees and Shrubs - \$3.00 to \$12.00 each
10" Hanging Baskets - \$2.00 to \$6.00 each
10" Geranium Baskets - \$4.00 to \$6.00 each
Geraniums - 4 1/2" pots - .35 to \$1.25 each

NOTE THESE PRICES ARE FOR
#1 PRODUCE ONLY

WHY PAY MORE FOR INFERIOR PRODUCE WHEN
YOU CAN BUY IN THE COUNTRY AND SAVE!

TRY LEINBACH AUCTION

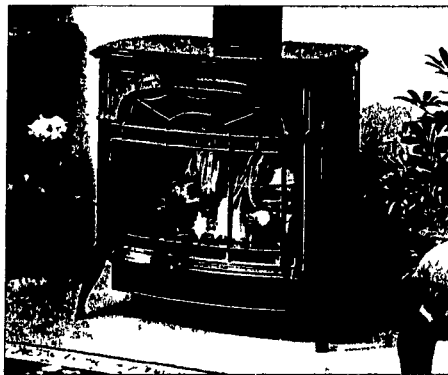
Leinbach Produce Auction

(1 Mile North of Shippensburg)

1120 Ritner Hwy., Route 11 Shippensburg, PA 17257

The Beauty of Wood. WARM Gas Heat Convenience. WINTER

Your
Chance To
Save
\$360-\$525
Off
While They
Last!



Come in and learn about the convenient line of
Vermont Castings gas stoves and fireplaces
Rugged cast-iron construction and easy to operate
And now at the lowest price ever

Made in the U S A

1060 Division Hwy
(Rt 322 E)
(717) 733-4973

Ephrata PA 17522
800-642-0310

**BOWMAN'S
STOVE & PATIO
INC.**

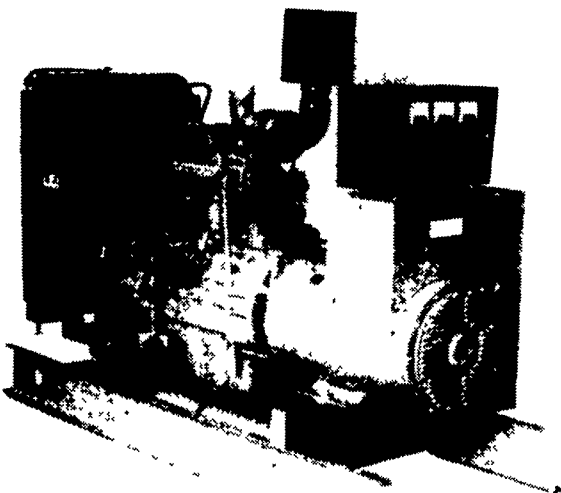
www.bowmansstove.com

HOURS

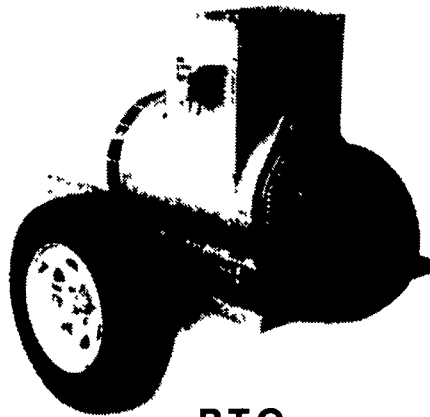
Mon., Tues., Wed. 10 to 6
Thurs., Fri. 10 to 8; Sat. 10 to 4



Agricultural Generators



Automatic
L.P. Gas, Diesel, Natural
Gas Generators
5 to 2,000 KW



P.T.O.
Generators
25 to 100 KW

Service - Rental - New - Used

PENN POWER SYSTEMS

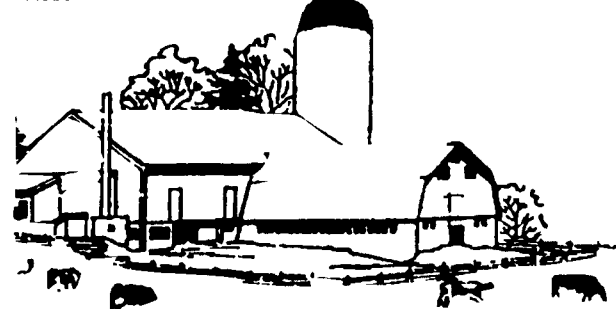
Power Generation Systems Specialists

Call Leonard Martin

717-866-6404

WHITEWASHING with ADVANTAGE FARM WHITE

- DRIES WHITE • NO WET FLOORS
- IS COMPATIBLE WITH DISINFECTANT AND FLY SPRAYS
- DOES NOT RUB OFF EASILY
- WASHES OFF WINDOWS & PIPELINES EASILY



BARN CLEANING SERVICE AVAILABLE WITH
COMPRESSED AIR

To have your barn cleaned with air it will clean off dust cob webs & lots of the old lime
This will keep your barn looking cleaner & whiter longer

CALL US ABOUT ON THE FARM FLY CONTROL

Serving Southeastern Pa. And More

BEITZEL'S SPRAYING

Witmer, PA 17585 717-392-7227 or
Toll Free 1-800-727-7228 7:00 AM to 5:00 PM
CERTIFIED COMMERCIAL APPLICATORS
LICENSED 37 YEARS EXPERIENCE INSURED

5 Trucks For Air Cleaning And Whitewashing

RADIO DISPATCHED TRUCKS

Barn Spraying Is Our Business, not a sideline.
Spraying Since 1961