



1996 Chevy S-10 LS 4X4, 4.3L, V6 5 Spd., AC, Delay wipers Cassette, 30,645 mi. Damage to left door and bedside. Runs Good

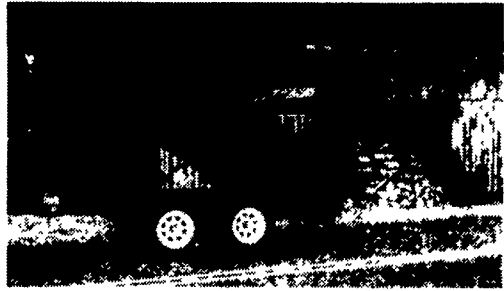
\$5,500
717-361-9296

'81 Ford 350, 351 motor, steel 10' bed, 5th wheel hook-up & brake, nice **\$2600**

'82 Ford 350 w/300 motor, 10' wooden bed, very nice **\$2600**

814-667-2297

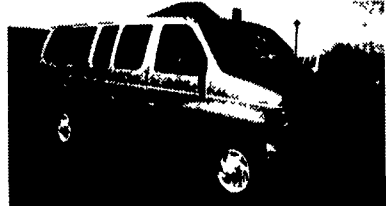
Load Boss Trailers



Quality Built Hwy. Dumps
Built To Suit Your Working Needs

6x10 7,000 GVW.....**\$2,999**
6x10 10,000 GVW.....**\$3,299**

Delivery Available
Save \$ Buy Direct
From The Manufacturer
814-623-8696



1997 Ford E250 XLT, 12 Pass., 5.4 V-8, AT/OD, Dual AC & Heat, Tilt & Cruise, PW & L, Privacy Glass, 27K Mi. #2562



1997 Chev G3500 Ext Express LS, 15 Pass., 5700 Vortec, AT/OD, Dual AC & Heat, Privacy Glass, Tilt & Cruise, PL, PW, 19K Mi #2637



'93-'95 Ford E150 XLT, 7/8 Pass., 302 V8, 351 V8, 300 6 Cyl., AT/OD, Dual A/C & Heat, Privacy Glass, Tilt, Cruise, PW & PL, Low to High Miles.



1995 Ford E250 Cargo, 300 6 Cyl., AT, PS, PB, A/C, 51K Mi., #2666.



1997 Ford E150 XLT, 8 Pass, Triton V-8, AT/OD, Dual AC & Heat, Privacy Glass, Tilt & Cruise PW & L, 25-32K Miles.



1996 Ford E350 Super Cargo, 73 Powerstroke Diesel, AT/OD, PW, PL, Tilt, Cruise, 9400 GVW, 54K Mi., #2652



1997 Ford E350 XLT 15 Pass., 6.8 V10, AT/OD, Dual A/C & Heat, Privacy Glass, Tilt, Cruise, PL, PW, P. Seat, P. Mirror, Alloys, 25k Mi., #2638



1995 Ford E350 XLT, 460V8 7 Pass., AT/OD, Quad Captians, & Sofa Bed, PS, PW, PL, Tilt, Cruise, 39K mi., #2636

Specializing In Vans

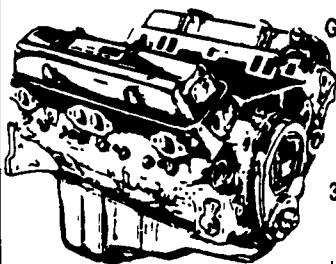
30/Four Way Auto Sales

770 W. Main New Holland, Pa. 17557 717 354 3199 717 355 0625 FAX

Toll Free 1-888-847-8029
Many Other Vans In Stock

JONES

Goodwrench ENGINE HEADQUARTERS



GM GOODWRENCH
350 V8 1973-85
Part Number
10067353
New Engine - Not Rebuilt
36 Month or 50,000 Mile Warranty

New Engine - No Core Fee **\$1199⁰⁰**

WE'LL MATCH ANY COMPETITOR'S PRICE!

6.5L GOODWRENCH DIESELS From **\$3,175**

Call 394-0711 for prices on other New or Remanufactured Goodwrench Engines. 2.5 Liter thru 454 cid. Gas and Diesel

JONES GM PARTS CENTER

1335 Manheim Pike, Lancaster, PA 17604
Easily Located on Rt. 72 Just off of Rts. 283 & 30
Hours: Mon-Fri 7:30 a.m. - 9 p.m. Sat 7:30-3
(717) 394-0711



Appalachian Manufacturing, Inc.
330-222-2468

20,000# G.V.W. Oil Bath Axle
10K Dual Tandem Trailers - Spring Assist Ramps
Pintle Pull, 18x5, Dovetail
Gooseneck, 20x5 **\$4,750**
\$5,000

24' Gooseneck, 4' dovetail, 12,000# G.V.W. 6,000# axels w/easy lube, electric brakes, 7 50-16 tires, breakaway kit, ramps w/pressure treated deck, standard **\$2,950**

16' Car Hauler, diamond plate deck with W/D rings, self storing ramps, 7,000# G.V.W. 3,500# axels w/elect brakes, 82" between wheel wells, breakaway kit incl **\$1,495**

We Special Build For Any Need!

21' Low Profile, 10,000# axel w/easy lube, elect brakes, pressure treated deck, 10,000# G.V.W. gooseneck
Bumper pull **\$3,100**
\$2,950

36 REAL ESTATE

126 ACRES near Elizabethtown, unimproved, 50% wooded. \$3,000 per acre, selling as one tract Call Jeff Shaffer, RE/MAX of Gettysburg (800)765-3280.

14x70 Mobile home very good condition. Located on quiet lot or move to your lot York County. 717-225-6239 \$9,500/obo

16A farm, York Co., Brogue area. Farmhouse, barn, outbuildings, \$129,000. 717-927-8132

2-story house, 2BR, 2-baths, large yard, LR, DR, enclosed front porch, 25 minutes to Ocean City, MD. \$39,000. 410-543-2919 717-349-7508

3 quarters acre on Interstate 81 at exit 38, ideal for towing service etc., also one half-double home adjoining property available if desired. \$79,900 both. 717-467-2679.

80-1/2 ACRE FARM: East Earl Twp., Lancaster Co 5BR, 2800 sq.ft, 2-story house, steer & veal barns, 2-year old broiler house w/32,000 capacity, 40+ Acres tillable, pasture, woodland & stream. Priced for quick sale! \$518K Call Randal Kline, Agent 717-569-8701 or 717-733-1006 res. KINGSWAY REALTY

Acreage, farm, etc, call Jackie, Smith & Associates RE, B H & G, (1800)766-4414.

Berwick, PA. Country views from 6+A site. Perked, sub-divided, ideal for horses, steam borders 2-sides, \$50,000. STRAUSSER REAL ESTATE 717-759-3300

Charlotte Co, VA 730A, 4BR house, barn, haybarn, cattle barn, machinery shed, plenty of water, 150A woodland, rest open. 804-248-6533

COMMERCIAL BUILDING: for lease/sale: 60x80 building for manufacturing or warehouse, large doors, 200 amp service, 2 offices, show room, rest rooms, gas and electric heat, 2 parking lots, includes a 3BR house w/modern kitchen, oil heat. Between Lebanon and Myerstown Will finance. Call (717)866-7315.

Columbia County, 50 acre Beef farm, Excellent outbuildings, small stream \$198,000. Farmette, 27 acres, house. Barn. New garage. All in good cond \$140,00. Call Coldwell Banker Wandell/Sofianek Realty Inc 717-784-8172 Ask for Burt

Crawford County Wisconsin 186 acre dairy, 130 acres class I and II cropland, 30 acres class III Free-Stall housing, 135' heifer barn w/fenceline bunk, hay shed, machine shed, commodity shed, 20x50 stave silo, two bunker silos. \$299,000 608-476-2149. Evenings.

FOR SALE: Demco truck mounted crop sprayer, 300 gal. tank, 5 horse motor, \$1,200. NH 116, 14' hydro-swing mower, \$4,200 (607)336-5151.

FOR RENT: 4,000 sq ft. 4 year old building for ag-warehousing, available in Fall '98, convenience to Rts 283 & 30, large overhead doors. Lancaster Farming (G-204), POB 609, Ephrata, PA 17522

HOSTETLER

Truck Bodies & Trailers

717-667-3921
Milroy, PA - Located between Lewistown And State College on Rt. 322 in PA

Skid Loader Trailers, 82" Between the Fenders, 10,000# GVW
14 Long **\$2,495**
16' Long **\$2,695**
18' Long **\$2,760**

Corn Pro Bumper Pull Livestock trailer, Corn Pro Rubber Torsion Axles, Treated Pine Floor
6 x16 3500# Axles **\$3,350**
6 8' Wide x 16 Long 3500# Axles **\$3,575**
6 8' Wide x 16 Long 6000# Axles **\$3,895**

20' Tilt Deck Trailer, 82" Between the Fenders, 10,000# GVW **\$3,295**

New Design Mortz Livestock Trailers Semi Round Front, New Sides and Rear
6x16 7000# GVW **\$3,350**
6 8' x 16 Long 7000# GVW **\$3,575**

18' Deck Over Trailer, 16 Flat 2' Dovetail with 5' Ramps, 10,000 Lg GVW Adj Coupler **\$3,395**

Financing & Leasing Available

Eby Trailers in Stock, Both Gooseneck & Bumper Pull
CALL FOR PRICES AND AVAILABILITY

Single and Dual Wheel Pick Up Flatbeds, Bulkhead, Coutside Pockets, Rear Skirt, With or Without Gooseneck, Compartments Starting at **\$770**

Tool Boxes, 36 x18 x18 **\$147**
24 x18 x18 **\$132**
30"x18"x18" **\$140**
42"x18"x18" **\$155**
48"x18"x18" **\$163**

Hostetter 4 Wheel Cart 5'x8', Plywood Floor, Auto Type Steering, Rear Axle Brakes, Tongue Mounted Hand Brake, Removable Sides, 9" Tires **\$1,295**

For Sale by Owner:
270 Acre Dairy Farm
Tioga Co., PA
160 tillable, balance pasture & small woodland including recreational springfed pond. 50 acres pasture in rotational grazing setup w/water system. 2 homes, 2-story barn w/77 tie stalls on 2" pipeline, 2 silos w/unloaders, heifer barn. 1/2 mile from US Rt. 6, 4 miles from college town.
Eligible for organic certification
717/549-7281