

**35 TRUCKS & TRAILERS**

**ALUM-LINE, INC.**

The Leader In Heavy Duty Construction

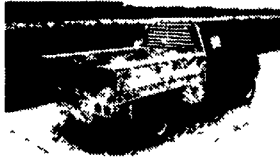
"More Trailer - Less Money"



All-Aluminum Livestock Trailers, Bumpers & Goosenecks • 8' to 39' Lengths • Double Deck Package Available

**"The Finest Truck Bed You'll Own"**

All-Aluminum Stake Body Beds • 6' To 24' Lengths • Many Standard & Optional Features • All Types of Tool Boxes



Also from Alum - Line, a complete line of aluminum pickup boxes and truck tool boxes

**Wolfe Auction**  
9801 Hansonville Rd.  
Frederick, MD 21702  
800-443-9580

**1978 GMC Brigidere**, 6V53 Detroit diesel, 25,000 miles on new engine, 10 speed trans., 33,500 GVW, good Michelin radial tires, double frame, hyd. PS, mechanically sound, but needs some cosmetics.....**\$7,500 OBO**  
**1981 1700 IHN**, 9 liter diesel, new rebuilt, 5-speed trans. & 2-speed rear, almost new Michelin radial tires w/Daffin mobile feed grinder, slowed down mill, hyd. feed table augers, hyd., air-locks & concentrate auger w/rebuilt 471 Detroit. Truck & mill in excellent condition. Will separate.....**\$25,000 Complete**

**Daffin Mill Parts:**

A complete rotor w/pulleys  
Singer feed for feed table  
Roughagizer complete  
Rear mixer shield, fair cond.

(2) Hyd. tanks

Pneu-weigh system complete, should be rebuilt **Make Offer**

9 speed Spicer, trans., good cond. **\$500 OBO**

2-way radio system

(3) 25 watt mobil radios

(1) 40 watt mobil radio

10' base antenna, (3) mobil antennas (2) 110 volt to 12 volt converters, (1) power booster.

80' tower **\$1500 OBO - Will separate.**

**ED'S CUSTOM MILLING**

7500 Rice Road, Shippensburg, PA 17257  
717-530-1778 • 717-532-3842

**WILLIAM H. WESSELS USED CARS**

 <b>\$5,990</b>	 <b>\$4,990</b>	 <b>\$16,900</b>
 <b>\$9,900</b>	 <b>\$2,190</b>	 <b>\$4,990</b>
 <b>\$22,900</b>	 <b>\$14,900</b>	 <b>\$8,990</b>
 <b>\$23,900</b>	 <b>\$9,900</b>	 <b>\$4,990</b>
 <b>\$8,990</b>	 <b>\$9,900</b>	 <b>\$8,990</b>
 <b>\$11,900</b>	 <b>\$6,990</b>	 <b>\$21,900</b>
 <b>\$11,900</b>	 <b>\$14,900</b>	 <b>\$14,900</b>
 <b>\$17,900</b>	 <b>\$5,990</b>	 <b>\$2,990</b>
 <b>\$6,990</b>	 <b>\$15,900</b>	 <b>\$18,900</b>
 <b>\$7,990</b>	 <b>\$13,900</b>	 <b>\$7,990</b>
 <b>\$3,990 to \$6,990</b>	 <b>\$22,900</b>	 <b>\$10,900</b>
 <b>\$5,990</b>	 <b>\$6,990</b>	 <b>\$18,900</b>

CARS	TRUCKS	MPV'S
'95 Chevy Monte Carlo A/C, A/OD, PDL, PW, AM/FM Cass, One Owner 26,000 Miles	'89 Ford F-250 XLT 6600 GVW, Light Duty, 6cyl, 5spd, AM/FM, Super Clean	'96 Chevy Blazer LS A/C, Auto, AM/FM Cass, Local Trade, Sharp!!
'96 Ford Taurus GL A/C, A/OD, PDL, PW, AM/FM Cass, Power Seats, Beautiful Rose	'96 Ford Ranger XLT 6cyl Auto, AM/FM Cass, One Owner, Priced To Sell	'95 Ford Windstar GL A/C, Auto, AM/FM Cass, "3" To Choose From
'96 Ford Mustang CPE A/C 5spd AM/FM Cass V6 Engine 2,000 Miles	'97 Ford F-150 4x4 S/Cab Lariat, A/C, Auto, AM/FM Cass, Only 9,000 Miles	'93 Ford Explorer Sport A/C, Auto, AM/FM Cass, Must See, Super Clean
'95 Ford Escort LX Coupe A/C Auto AM/FM Cass, Only 23,000 Mile	'94 Ford Ranger S/Cab XLT 4x4 A/C 5spd, AM/FM Cass Super Nice	'95 Ford Bronco EB A/C Auto, AM/FM Cass, Fully Loaded
'95 Ford Probe A/C 5spd AM/FM Cass Only 17,000 Miles Super Clean	'96 Toyota Tacoma S/Cab 4x4, A/C, 5spd, AM/FM Cass, Just Traded One Owner	'94 Ford Aerostar XL A/C, Auto, AM/FM Cass, "5" Aerostars To Choose From
'95 Saturn SL1 SDN A/C, AM/FM Cass Auto, Beautiful Plum Color, Low Miles	'90 Ford F-150 S/Cab XLT A/C Auto, AM/FM Lots of Extras	'95 Jeep Wrangler 5spd, AM/FM Cass, 4WD, Hard Top, Super Clean, Fun To Drive
'95 Lincoln Continental Full Loaded with Sunroof 8cyl Fun to Drive	'94 Nissan XE 4x4 A/C, AM/FM, 5spd Only 39,000 Miles Sharp Looking Truck	'95 Geo Tracker 4x4 LSI A/C, Auto, AM/FM Cass, Convertible, Fun To Drive
'95 Mercury Sable GS SDN A/C, A/OD, AM/FM Cass Super Clean Well Taken Care Of	'93 Ford F-150 XLT S/Cab A/C Auto, AM/FM, 29,000 Miles Local Trade	'95 Jeep Grand Cherokee Laredo, A/C, Auto, AM/FM Cass, "5" To Choose From
'96 Pontiac Sunfire SE A/C 5spd, AM/FM Cass Only 12,000 Miles One Owner	'95 Chevy C1500 WT A/C, Auto, AM/FM Dependable Work Truck	'95 Jeep Cherokee Country A/C, Auto, AM/FM Cass, "A Must See"
'93 VW Corrado A/C 5spd, AM/FM Cass, Sunroof, Rare Beauty With VR6 Engine	'96 Ford Ranger XLT S/Cab A/C Auto, AM/FM Cass, Low Miles, Must See	'93 Suzuki Sidekick 4x4, A/C 4DR, 5spd, AM/FM Cass, Sporty

**ENGLE-RISSINGER AUTO GROUP**  
Midway Between Halifax And Millersburg • 717-896-3421 • 1-800-242-8075  
HOURS: Monday-Friday 8:30 AM - 8:30 PM; Saturday 8:30 AM - 3:00 PM

**ALL STEEL REPLACEMENT TRUCK BED**

7'x70"W or 80"W  
8 1/2' Lx80' W or 90' W  
10' Lx8' W, 12' Lx8' W

Also Available in 4'x7' and 4'x8'

**5'x8' Starting at \$650**

UTILITY (TILT OR GATE MODEL) SIZES:  
5'x8', 5'x10' 2000# GVW - 5'x10'  
6'5"x10', 6'5"x12', 3000# GVW

**WIDER**

UTILITY WITH GATE-SIZES  
16'x77", 18'x77", 7,000# GVW

**WIDER**

CAR HAULER TRAILER.  
16'x78" & 18'x78" includes 5' Beavertail  
7,000 lb. GVW 4' self storing ramps

**Quality Trailers Built Locally By "PA International"**

**Car Dollie**

Sale \$795

**24' 10 ton w/air Brakes**

**Used 19' 15 Ton Tilt-Axle Trailer**

**Over 300 Trailers In Stock Starting At \$475.00 T-Plates DEALERS WANTED**

**Highway Hydraulic Dump**

**BRI-MAR**

5'x8', 3000# \$2,150  
5'x8', 5000# \$2,495  
6'x10', 7,000# \$3,195  
6'x10', 10,000# \$3,495  
7'x12', 10,000# \$3,995

**FREE BATTERY**

**LOW PROFILE DUMP TRAILERS**

**BRI-MAR**

6'x10' GVW low profile dump trailers w/ landscape gate

7,000# \$3,495  
10,000# \$3,895

**FREE BATTERY**

Starting At \$3995 w/4' Adj. Tail

GOOSENECK SIZES: 20'x8' 12,000# or 14,000# GVW, 24'x8' 14,000# GVW

Low Profile construction  
16'x77" & 18'x77"  
10,000 # GVW

DECK-OVER CONSTRUCTION  
14'x7' With Tail, 3000# or 4000# GVW  
16'x8' With Tail, 7000# GVW  
20'x8' w/Tail 10,000# GVW **\$3,295**