

94 Chevy Suburban, 6.5 turbo, Silverado, clean, 49K miles, blue/grey, \$22,500. Call 717-998-9638

Mitsubishi FEHD. 717-463-3701  
Single axle dump truck. 717-463-3701

## LESHER Mack SALES & SERVICE

27th & Cumberland St. Lebanon, Pa 17042  
Route 422 West

**NEED A SLEEPER OR DAYCAB?**  
Sleeper boxes can be removed - plenty to choose from  
1994's - 1995's

E7-350 RTLO14610B - 10 Spds., DS404 - 3.9OR on Air, Steel Disc Hub Pilot, 295/75R 22.5 192 WB, 42" Highrise, 400,000 Miles



**LEASE IT!**  
1999 Isuzu NPR 14 Ft. Supreme Van Body, Call For Details Ask For Leasing Dept

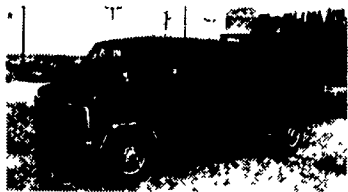


1995 Parker Dump O.A. Length 34ft, 3-Axle Air Ride, 11R22.5, Spoke

1974 Int. Loadstar 392 V8, 4 Spd., Auto, 10 Ft. Bed, 10' Road Plow, New PA Inspection, 26,000 Lb., Runs Good



**717-273-4535**



94 Chevy 3500 15 Passenger Beauville Van 350 V8, AT, Dual Heat & Air, R.W. Defroster, PL, PW T, C, 59,000 Miles  
Was \$16,990 **NOW \$14,990**  
(3) 98 Chev. Contractor Dump Trucks in Stock



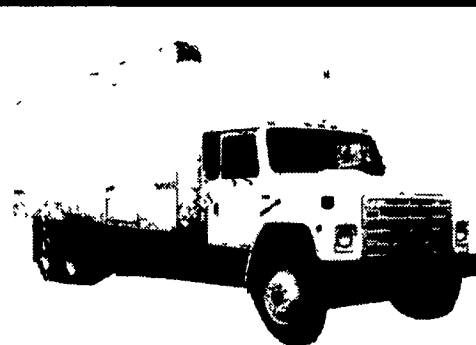
94 Ford F150 XL 4.9L, AT, XL Pkg., AM/FM, Bedliner, Delay Wipers, 30,210 Miles  
**ONLY \$9,990**



4111 Pottsville Pike (Rt. 61 North) Reading, PA 19605 **610-921-0261**

The only way to buy a truck.

**O'CONNOR**



1989 International F1954 tandem axle 24' Morgan Van, new remanufactured DT-466 (245 H.P.), 6 speed, walking beam suspension, power steering, air conditioning, looks great, runs great. Stock #614762 Reduced to \$22,500 firm. Over 300 more to choose from

**O'CONNOR**  
TRUCK CENTERS

SOUTH PHILADELPHIA  
1-800-229-3825  
215-937-4300

HOURS OF OPERATION: MONDAY-FRIDAY 8:30-6:00 • WEDNESDAY TILL 8:00 • SATURDAY 9:00-1:00 SALES ONLY

Lancaster Farming, Saturday, May 23, 1998-D35

### TRUCKERS

27' RATCHETS.....\$15.95  
WINCH STRAPS....\$12.95  
RUBBER T. STRAPS...54¢  
COMPLETE ROLL TARP SYSTEMS  
TIRONIE TARPS  
(800) 874-2928 • FAX: (717) 584-3127

1995 Ford Crew Cab 4x4 XL 350, Long Bed, Powerstroke Diesel, 7.5 Diesel, 127,000 Miles, Vinyl Interior, AT, AC..... **Only \$18,900**

1994 GMC 1500 SL 5 Sp., AC, 4.3 Ltr. Only 23,000 Miles, Teal Green, 2WD, Like New..... **Only \$11,400**

1997 Dodge Ram 1500 Ext. Cab SLT 4x4, 5 Sp., AC, 318 5 Star, Alloys, Maroon, Ground Effects, Showroom Condition, All The Options, 16,000 Miles..... **\$21,900**

1995 Ford F-250 XL Ext. Cab 2WD, Red, AT, AC, 300 6 Cyl. High Miles But Nice Truck, 1 Owner, Was \$10,900..... **\$10,400**

1990 Ford F150 Custom 4x4, V8, AT, AC, Local Trade, Matching Topper, New Exhaust, New Tires, Very Clean Truck, Only 78,000 Miles..... **\$8,900**

28 Foot Travel Trailer, 5th Wheel Hitch, Awning, Sleeps 8, Good Starter Camper..... **\$2,400**

1974 Dodge Van Motor Home, Needs Exhaust But Runs Great, Kitchen, Great To Go To Shore To Fish

1985 GMC 1500, AT, AC, 2WD, 6.2 Diesel, Black, Needs Some Work. . . . **\$1,500 Or Best Offer**

1972 Chev C20 350 4 Sp., Jade Green, New Cam and Lifters, 2WD, Only 77,600 Miles, 1 Owner ..... **\$3,900**



(717) 949-6513

**Birchwood**  
Auto & Truck Sales



95 CHEV K2500 SUBURBAN 4x4, 6.5 Turbo Diesel, LT Pkg., AT, Dual A/C, Leather & Lots Options, Alum Wheels, 64,000 Miles, Dk Green #C470



95 FORD F350 CREW CAB DUALY Power Stroke Diesel, XLT, AT, A/C, C. T, PW, PL, Alum. Wheels, Fiberglass Cap, 73,000 Miles, Dk. Green, #F727



96 FORD F250 SUPER CAB 4x4 Power Stroke Turbo Diesel, Short Bed, XL Trim, 5-Speed, AC, C.T, Dual Tanks, Only 23,000 Miles, Black #F651



93 FORD F250 XLT 7.3 Diesel, AT-OD, A/C, C. T, PL, PW, Dual Tanks, Running Boards, 65,500 Miles, Blue/Dk. Blue, #F649



89 IVECO 14FT. STAKE BODY Turbo Diesel, 5-Speed, PS, PB, 11,000 GVW, 99,000 Miles #IV101



85 FORD F250 HEAVY DUTY 6.9 Diesel, 4-Spd., AM/FM Cass. C.T, Only 95,000 Miles #F733



97 DODGE RAM 3500 CLUB CAB 4x4 DUALY Cummins Turbo Diesel, AT, A/C, Laramie Pkg., All The Bells & Whistles, 1,000 Miles #D226



94 DODGE RAM 3500 DUALY Cummins Turbo Diesel, AT, A/C, PW, PL, C.T, 45,000 Miles, Red/Driftwood #D212



93 FORD E350 SUPER VAN 15 Passenger, XLT, At, 351 V8, Dual A/C & Heat, PW, PL, White, 75,000 Miles #F691



90 FORD F350 COVERED UTILITY BODY 351 V8, AT, A/C, AM/FM, Dual Tanks, 85,000 Miles, White, Very Nice, #F676



90 FORD SUPERDUTY CAB & CHASSIS 7.3 Diesel, AT, PS, PB, Dual Tanks, 111,000 Miles, White, Ready For Your Body, #F725 (also 1991 XLT Chassis in Stock)



94 CHEV K3500 4X4 CONTRACTOR DUMP 6.5 Turbo Diesel, 5-Spd, A/C, Am/Fm Cass, Class III Hitch, Tool Box, 70,000 Miles, #C451



96 GMC 2500 EXT. CAB Heavy Duty, Sierra Pkg, 454 Vortec, AT, A/C, Cruise, 31,000 Miles, Red #G192



95 GMC K-2500 EXT. CAB 4X4 6.5 Turbo Diesel, AT, A/C, C. T, SL Trim, 118,000 Miles, White, Looks & Runs Good #G190



94 FORD F250 H.D. XLT 4X4 Turbo Diesel, 5-Spd., 8600 GVW, A/C, PW, PL and Much More, 73,000 Miles, Grey/Blue. #F712



90 FORD F350 4X4 UTILITY DUMP 460 V8, AT, AM/FM, PS, PB, Dual Tanks, Blue #F734



90 FORD F350 CONTRACTORS DUMP 460 V8, 5-Speed, AM/FM, PS, PB, Dual Tanks, 57,000 Miles, Green #F735



88 CHEV C30 CREW CAB CHASSIS 350 V8, 4-spd., PS, PB, Good Conduon #C467



96 FORD F250 SUPER CAB 4x4 Power Stroke Diesel, XL Trim AT, A/C, 26,000 Miles, Dk Metallic Green #F702



96 FORD F250 SUPERCAB 4X4 Power Stroke Diesel, 5-Spd., A/C, XLT Trim, PW, PL, C. T, and Much More, 18,000 Miles, Electric Red, #F700



95 CHEV K3500 CREW CAB DUALY 4x4, 454 V8, AT, A/C, Silverado Pkg., PW, PL, C. T, 48,000 Miles, Black #C468



94 CHEV. 3500 10FT. FLATBED 6.5 Turbo Diesel, 5-speed, A/C #473 85,000 Miles Tool Box



90 FORD F250 SUPER CAB 4X4 7.3 Diesel, XLT, AT, A/C, PW, PL, C.T, Teal/Grey Int., Hi-Miles #F702



91 DODGE UTILITY DUMP Cummins Turbo Diesel, AT, AM/FM, Dual Wheels, Utility Body w/Dump Insert, 64,000 Miles #D210



97 FORD F350 CREW CAB 4x4, Power Stroke Diesel, AT, AC, XLT Pkg, Alum Wheels, PW, PL, C.T Only 18,000 Miles, Black #F714



97 CHEV 1500 EXT. CAB 3-Dr., 4x4, 350 Vortec, AT, A/C, Silverado (most options), Only 4,000 Miles, Blue #C472



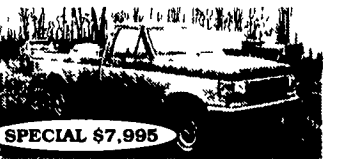
90 FORD F250 SUPER CAB 4X4 7.3 Diesel, XLT, AT, A/C, PW, PL, C.T, Teal/Grey Int., Hi-Miles #F702



91 DODGE UTILITY DUMP Cummins Turbo Diesel, AT, AM/FM, Dual Wheels, Utility Body w/Dump Insert, 64,000 Miles #D210



94 CHEV. 3500 10FT. FLATBED 6.5 Turbo Diesel, 5-speed, A/C #473 85,000 Miles Tool Box



88 FORD F250 4x4 7.3 Diesel AT, A/C, Cass, 8600 GVW Class III Hitch, Hi-Miles, Runs Excellent, 2 Tone Blue #F722

OVER 120 TRUCKS

Preferred Warranties Available on Most Trucks

Bobby Gerhart's

# Truck World

Mon. - Fri. 9-8, Sat. 9-3

2400 E. Cumberland St. Rt. 422 Lebanon, PA 17042 717-273-7995

Special \$5,995

4x4 Diesel

Special \$6,995

SPECIAL \$7,995