

**Salesmen:**  
*Alvin Martin*  
*Bob Lentz*  
*Dave Wenger*

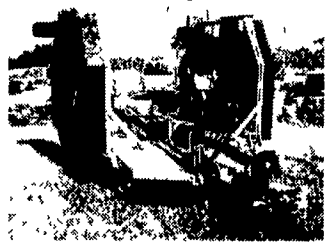
# WENGBERS OF MYERSTOWN FARM MACHINERY



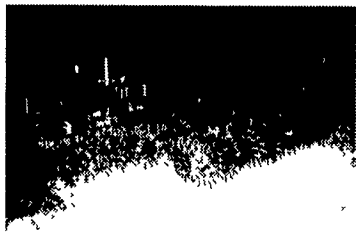
814 S. COLLEGE ST. (ROUTE 501)

**(717) 866-2135**

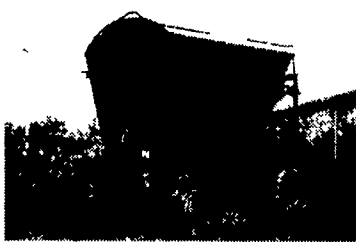
MYERSTOWN, PA 17067



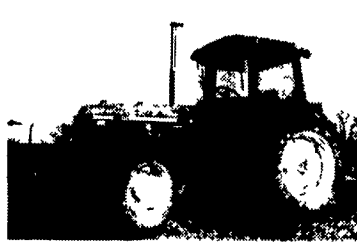
WOODS 3180 15' Batwing  
 New & used on stock



Yetter 12' and 15' Rotary Hoes



RICHARDTON 1200 Side Dump  
 (Sharp)



JOHN DEERE 2950 MFWD,  
 priced right



HOWARD heavy duty 11' 3 pt  
 1000 PTO rotovator



GEHL 970 Tandem Axle, Roof,  
 3 Beater, Good Condition



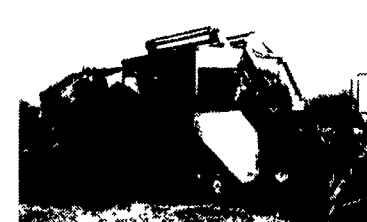
DANCO 20' Aluminum rollback body,  
 complete less pump and reservoir,  
 good condition



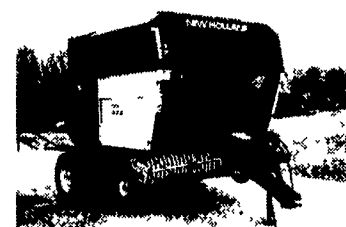
New Holland L555 Skid Loader,  
 Good Condition



1980 GMC w/Jerr Dan 20'  
 rollback, 366 V-8 gas, 27,500  
 GVW, 5+2 trans



NEW HOLLAND 852 Round Baler,  
 Economically Priced



NEW HOLLAND 853 Round  
 Baler



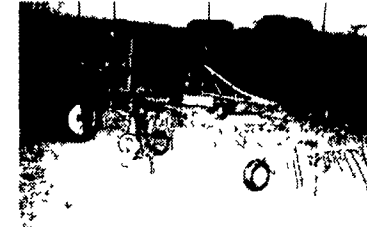
1995 Case IH 7210 MFWD, 3489  
 Hrs 18 4x46, weights, nice



GEHL 980 Hydraulic Drive, Tandem  
 Axle, 18', Near New (No Roof)



INTERNATIONAL 184 w/Loader  
 and 5' Mower



New Holland 254 3 Pt  
 Rake/Tedder Combination

### TRACTORS

Case IH 7210 MFWD  
 JD 4240 CAQ (COMING IN)  
 JD 4030, 4 post, quad-range  
 JD 4430 open station, quad  
 JD 2950 MFWD, cab  
 JD 2640 utility, nice  
 JD 2010 gas, widefront, nice  
 JD 435 2cyl. GM diesel, very average  
 Case IH 265 Hi-Offset w/Cultivator  
 IH 1066, factory cab, weights, nice  
 IH 684 w/2250 loader, nice  
 Ford 6640 open station  
 Ford 4610 w/new 195 loader  
 Ford 4610 rollbar and canopy  
 Ford 445A 4WD Industrial loader w/3pt.  
 Ford 5600 w/Ford 772 loader  
 Ford 6000 Commander diesel  
 White 2-85 w/cab  
 Oliver 550 w/loader  
 Case 430 gas tricycle  
 Case 570 gas w/loader  
 Case VAC w/3 pt. (great one to restore)  
 Allis Chalmers WD 45 gas wide front  
 Farmall H w/Snow blade  
 Farmall MD w/P.S.  
 JD LA w/cultivator  
 JD MT single front wheel

### CORNPLANTERS

AC 2R 3pt Notil cornplanter  
 JD 7000 6R30 Liquid Planter  
 JD 7000 4R Dry Fert.  
 3) JD 80 Planting Units  
 JD No-Til Coulters for 7000 Planters  
 IH 800 4R30, liquid cyclo air  
 JD H 2R Mtd. Planter  
 Black Hawk 2R 3 pt. planter  
 4) Ford 309 2R 3 pt. corn planter

### COMPACT TRACTORS

IH 284 28HP gas 2WD w/snow blade  
 IH 184 low boy w/loader & mower  
 1980 GMC 20' rollback, 27,500 GVW,  
 gas engine  
 IH 154 low boy w/loader

### ROLLOVER PLOWS

3) JD 4200 4x16, 3x base.....\$2200 ea  
 JD 4200 4x16, 3x base.....\$2850  
 JD 4200 4x18, 3x base.....\$2200  
 IH 140 4x16.....\$2600  
 2) IH 125 4x16.....\$2200 ea  
 Ford 145 4x18 on land.....\$2000  
 Case 600 4x16.....\$2750  
 JD 3825 2x switch plow.....\$1950

### CHISEL PLOWS & FIELD CULTIVATORS

Krause 21' Landsman Sharp  
 Willbeck 7T soil saver (sharp)  
 Glenco 7T Soil Saver  
 Glencoe 5T Soil Saver  
 Brillion 3T 3 pt. Soil Saver  
 Brillion 5T 3pt chisel  
 Bush Hog 12T 3pt chisel 8T base  
 IH #11 Auto Reset Sub Soiler  
 2) 1 Shank 3 pt. Sub Soiler  
 Kewanee 11T 3 Pt.  
 Brady 7T 3pt chisel  
 AC 7T 3 pt. chisel  
 IH 4500 13' wing fold field cult.  
 IH 45 16' 3pt f/cult  
 Hiniker 1120 18' flat fold f/cult.

### MOWERS

JD 616 6' 3 pt rotary  
 3) Woods 3180 15' Batwings  
 Woods 2126 10-1/2' mower  
 2) Woods Cadet 7' 3 pt.  
 King Kutter 4' thru 6', 3 pt & pull  
 Woods RD 7200 rear discharge 6'  
 Woods RM 660, 6' estate  
 Woods belly mowers for Cub & A  
 2) Toro reel mowers  
 Bush Hog 7' 3pt. rotary mower  
 IH 6' 3 pt. rotary mower  
 BEFCO 110 9' estate mower  
 Mott 38" Flail w/8 HP engine  
 2) Woods C114 9 1/2' rotary mower  
 Case IH, NH, Deutz 3pt. disc mowers  
 Ford 917, 5 1/2' 3 pt. flail mower

### SKID LOADERS

Ford NH 555 diesel, nice, 40 HP  
 Gehl 3825 33 HP Kub. diesel  
 Hydra Mac 6C mini skid steer  
 Ford NH LX485 (sharp)

### BALERS AND HAYBINES

NH 853 round baler  
 NH 852 round baler  
 JD 410 round baler  
 Farmhand (Vermeer) 405 HDS round baler  
 2) NH 488 9' haybines (nice)  
 FNH 489 9' haybine  
 2) JD 1219 9' haybine  
 Case 550 9' haybine  
 Case IH 8330 9' haybine  
 JD 338 w/40 ejector  
 2) JD 327 baler w/ejector  
 FNH 316 Baler w/Thrower (sharp)  
 NH 65 compact baler

### DISC HARROWS

Case IH 475 13' disc, sharp  
 JD 230 20' wing fold, sharp  
 JD 220 18' Center Fold (Coming In)  
 Kewanee 1100 21' flat fold  
 Kewanee 12' rockflex, nice  
 Kewanee 10' rock flex  
 Case 11' disk, nice  
 Hutchmaster HD 12' offset  
 4) IH 8' & 10' transport disk  
 White 271 18' wingfold rock flex  
 AC 8' transport disk  
 JD 8' transport disk  
 IH drag disks

### COMBINES, HARVESTERS & CORNPICKERS

JD 4420 combine, cab, air, diesel  
 JD 300 Husker w/2RN  
 (2) NH 770 Harvester 1R, 2R and hay  
 IH 82 pull type combine  
 IH 80 pull type combine  
 JD 443 & 643 oil bath corn heads  
 JD 213 13' flex head

### PLOWS

JD 3600 5x18 Auto Reset Pull Type  
 JD 2800 8x Variable Auto Reset  
 Ford 140 3x16 Auto Reset, 3 pt.  
 Oliver 348 3x16 3 Pt. Auto Reset  
 Oliver 3x16 3 pt. cushion trip  
 JD F145 3x16 3 Pt. Trip  
 IH 720 4x18 auto reset  
 2) IH 450 3x16 3 Pt. Auto Reset  
 IH 2x14 3pt. trip bottom  
 IH 1x Fast Hitch Plow  
 Super A and Cub Plows  
 Several 2x 3 Pt. Plows  
 Imco 1x3 pt. Plow  
 Oliver 2x14 Pull Plow  
 IH 2x16 FH  
 IH 3x FH

### ROLLER HARROWS AND PACKERS

Brillion 18' packer w/end trans  
 Brillion 16' Packer w/end trans  
 Brillion 10' packer  
 Dunham 10' cultmulcher  
 Brillion 10' cultmulcher  
 Dunham 12' Cultmulcher  
 Brillion 12' Cultmulcher

### HAY EQUIPMENT

3) Pequea 710 PTO tedder  
 NH 254 rake/tedder  
 NH 56 rake  
 NH tandem rake hitch  
 Ag Wrap 5x5 3pt. bale wrapper  
 3) 3 pt. bale mover  
 Loader mount bale spear (Universal)  
 Loader mount bale hugger  
 Zimmerman 32' corn/hay elevator  
 Zimmerman 40' hay/corn elevator  
 NI 30' corn/hay elevator  
 Allied 40' corn/hay elevator

### MISCELLANEOUS

Richardton 1200 side dump (sharp)  
 JD 8250 14x7 DD w/grass & fert.  
 JD 8300 18x7 DD w/grass  
 JD 8300 24x6 DD w/grass  
 JD 8300 14x7 DD drill  
 IH 510 17 DD w/grass & fert.  
 Woods 6500 3 pt. backhoe attachment  
 Woods 750 3pt backhoe (sharp)  
 Kelley 30 3 pt. backhoe attach.  
 Yetter 12' & 15' rotary hoe  
 (5) Belt 16' Alum. Elevator  
 IH 1R PTO Potato Digger  
 Oliver 2R Potato Digger  
 (10) Gravity Bin Wagons  
 EZ Flow & JD 8' and 10' lime drill  
 2) Howard 11'3 pt. HD rotovator  
 Woods 52" rototiller  
 18.4x38 Open Center Duals

**FINANCING AVAILABLE - TRUCKING AVAILABLE**