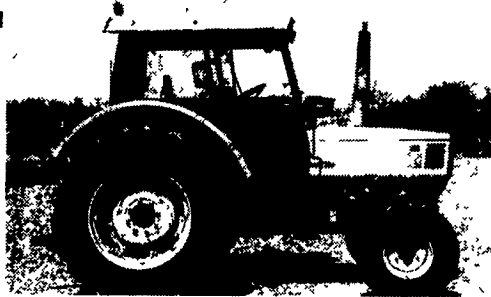




**1993 Ford Explorer XLT 4x4, V6,**  
New Tires, Sharp, 110,000 Miles. **\$7,800**  
**(717) 369-4115**



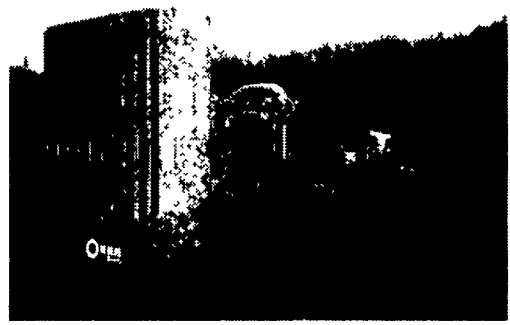
**Deutz 7085**  
**85 HP, Excellent Condition**  
**Special Price \$9,400**  
**Taneytown Farm Equipment**  
**410/751-1500**

**Larry L. Adair**

55 Gal. Drum Delivered Free 50 Mi. Radius From York, PA (No drum deposits)		15W40 SAE 30 Tractor Hydraulic Oil \$159.60
--	--	---

**Bulk oil available  
Call for pricing!**

**(717) 246-9741 • 800-755-OILS (6457)**  
Call Early Morning Or Late Evenings



**175 KW Genset 3-Phase, 115 KW Single Phase, AC Diesel Onan Generator, 1175 Hours..... \$7,800**  
**717-336-7375**  
No Sunday Calls

**IN STOCK**

**Ready to Ship**

**NEW REPLACEMENT PARTS FOR JD TRACTORS**

- |                     |               |                         |
|---------------------|---------------|-------------------------|
| Spindles            | Sway blocks   | Crankshafts             |
| Tie rods            | 3 pt. arms    | Fly wheels              |
| Steer arms          | Toplinks      | PTO shafts              |
| Hubs                | Draw bars     | Clutch discs            |
| Rims                | Fenders       | Rebuilt clutches        |
| Complete wide front | Side screens  | Reground cranks         |
| Seats               | Side panels   | Rebuilt injection pumps |
| Mufflers            | Battery boxes | Rebuilt hydraulic pumps |
| Radiators           | Manifolds     |                         |

**NELSON PARTS**

**Penn Yan, NY**  
**1 (800) 730-4020**

**ALSO -  
Used Parts for  
JD Tractors**

**Leaman Tractor Parts**

**329 Brenneman Rd.,  
Willow Street, PA 17584  
(Lancaster Co.)**

**717-464-2874 Fax 717-464-4130**

**We Now Accept**



Turn Left on Brenneman Rd.  
from 222 S at Refton

**DEALER INQUIRIES WELCOMED**

**TORQUE AMPLIFIERS  
& CLUTCHES**

- ★ 5 Year Warranty (Complete Unit)
  - ★ Heavy Duty Dana Sprag
  - ★ Price \$695.00
  - ★ 20 Years of Proven Results!
- Same day center housing rebuilding, flat rate labor charge \$125.00 + parts

**ENGINE PARTS**

Fuel pumps, injectors and turbos for most brands of tractors - 1 year warranty Engine overhaul kits for most tractors - Perfect Circle, Reliance & Navistar  
Call for competitive pricing

**USED TRACTORS**

- 1991 Magnum 7140, MFD, fully equipped, 3800 hrs, 18x42 tires & duals, very clean \$47,500
- IH 1086 cab, air, non T/A, good tractor, 1981, ~~\$12,900~~ \$12,000
- IH 1086, 1981 model, fresh paint, cab, air, good cond.
- IH 986 cab, **SOLD** 5 yr. TA, very clean
- IH SMTA recent engine & TA fresh paint, very nice cond.
- IH 966 black stripe w/fresh T/A
- Case 1594, cab & air, PS, fresh engine & trans, new paint
- IH 856, 3 pt, 38" tires, good solid tractor
- Several WF ends for IH 56 series
- Case IH 5130, ROPS, MFD, power shift, good tractor Equipped w/14x46" tires, also avail on 38" tires Set up for vegetables
- IH 966 w/3020 original hrs, fresh T/A & clutch, (5 yr) Hmicker 1300 series cab
- Hmicker Year-a-round cab to fit 656 thru 686 very nice cond
- Complete wide front end for JD 3020 or 4020
- Case IH 900 planter, 6x30 excellent cond., highest level monitors, insecticide boxes, new 3-seasons ago
- Farnall 300 w/fast hitch & fresh paint
- Available Agco 6125, MFD, new 1994, all new tires, 4800 hrs, cab, duals

**Recent parts Tractors: JD 8630, 4020, 4010, Ford 9600 & 8000, IH 4586, 1086**

**Call Us For Your Tractor Parts Needs IH & JD  
Over 400 Tractors Dismantled For Parts**

**Evergreen Tractor Co.**

41 South Fairlane Ave., Myerstown, PA 17067

Parts, Sales, Rentals & Service for Bobcat.

Used Equipment & Skid Loader Rentals

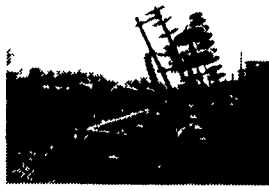


**USED PARTS FOR**

- JD Plows 2500, 2600, 2700 & 2800
- 4200 Plows, F350 Hydraulic 345 Reset Plows
- IH Plows 125, 165 700 710, 720, 450
- Cultivator Parts, IH 45 & JD1000
- Grain Drills
- Trip Plows
- Cultipackers and Roller Harrows (John Deere, Brillion & Kewanee)
- JD 35 & 38 Harvesters
- Grain Platform
- Combine Corn Head
- JD 1240 & 1250 Planters
- IH 56
- JD 7000/7200 Planter
- JD 672 Rake
- NI 314 Sheller
- NI 325 Picker
- JD 4400 Combine



**Kewanee 16 Ft. Hyd. Fold Field Cultivator**



**Deutz-Allis 2500 18 ft. Rock Flex, Good Blades**



**Bobcat 763 F-Series Used-Demo - 180 Hrs - Call -**



**(2) IH 56, 2-row Planters, Good Cond.**



**Hiniker 4-Row No-Till Cultivator, Good Condition**

**TRACTORS**

John Deere Model "L"  
Clark 3,000 lb LP Forklift

**BALER & THROWER**

NH 326 w/Hyd Tension  
NH 326 w/70Thrower  
NH 310  
NH 269 w/Thrower  
JD 336 w/30 Thrower  
MF 124 Baler w/Thrower  
(3) JD #30's & #2  
(4) NH #75 & 58A & 54

**HARVESTERS - HEADS & P/U'S**

IH 830 w/2RN  
NH 782  
Fox 2310 w/1 Row  
NH #33 Grain Chopper  
Gehl 600 Harvester w/Head  
JD 2 RW w/Clutch  
IH 2RN or 2 RW 720-830  
NH #770 Snapper Head  
(2) Hesston 6" Pickup w/Dolly

**BLOWER & RAKES & TEDDERS**

JD 640 w/Dolly Wheels  
JD #350 3 pt Rake  
ZF Rotary Rake  
H&S Bar Tedder  
Gehl 1560 Blower  
NH #28 Blower  
Stoll 3 Pt Tedder/Rake

**HAYBINES & MOWERS**

JD 1460 Discbine  
JD 1209 Haybine  
MC 7' Cuditioner  
JD #350, 3pt Mower  
JD #50 Side Mtd Mower  
3 Pt Offset Mower  
JD #25A Finish Mower  
D/A 6 ft 3 pt Disc Mower  
Woods C80 Pull-Rotary Mower  
Alamo GK-62 Offset Mower

**PLANTERS/ DRILLS**

(3) Holland 2-Row Setters w/Tanks  
2 Row Tobacco Setter  
(2) IH 56 4 Row, w/Fert (Nice)  
JD 8300 DD, Grass  
IH 5100, 21x7, DD & Press  
IH 5100, 21x7, DD Grain & Press  
(2) IH 56, 2 Row w/Fert  
IH 9x15" 3pt Bean Planter  
JD 1500 Power Till Seeder  
Deutz-Allis 385 6x30 Dry Fert  
Insect **Mechanic's Special \$1,900**

**CULTIVATORS**

Brady 12 ft & 15 ft Cultivator w/Harrow  
Kewanee 16' Hyd Fold Field Cult

**ROW CROP CULTIVATORS**

(2) JD 2-Cyl Cultivators  
IH 85, FT Mid Cult  
IH 78 Ft Mount  
Cultivators & Plow (for IH Cub)  
(2) IH 4 & 6 Front Mtd Cult  
JD 6 RN Front Mtd FM  
JD 4 RN Front Mtd  
Brillion 4 Row R C Minimum-Till Cult  
(2) Hiniker 4 & 6 RN No-Till Cult  
(4) JD RM 4 & 6 RN Cult For Super  
Anhydros/Nitrogen Knife Bar

**USED SKID LOADER & ATTACH.**

Bobcat 763H  
Bobcat 543 Loader  
BC 2560 Breaker  
BC Grader Attachment  
7' Dirt Blades Hyd Angle  
Pallet Forks BC & NH \$660 00  
New Buckets in Stock  
New Bucket Bites  
B C 5A Landscape Rake (Used)  
Used B C Manure Forks \$375  
Landscape Grapple Bucket \$1,175

**DISCS PACKERS/MULCHERS**

Oliver 241 10 ft Disc  
Deutz Allis 2500 18' Rock Flex  
IH 500 12 ft Heavyweight Disc  
Kewanee 12 ft Rock Flex  
JD 1635 12' Plowing Disc  
AC 12' Plowing Disc  
IH 475, 22' Hyd Fold  
(2) Krause 1071 9T Disc Chisel  
JD 210 12' Nice  
JD 210 14' V-Good  
Brillion 25 ft X-Fold Packer

**PLOWS & CHISELS**

MF 880 O L 6x Plow, Spring Reset  
White 588 5x18"  
(2) JD 325 3x16 Auto Reset Plow  
JD 350 5x Reset Plow  
Ford 140 S R 3x16, 3 Pt  
(8) JD 2, 3, 4 Btm Plows  
Oliver/White 348, 3x16" S R S  
IH 710, 4x18" SRS, Late Model  
JD 2500, 4x18" Plow  
MF 880, 6x18" S R S  
3 Pt 9 Teeth Chisel



**ATTENTION FARMERS**

**Are You Burning A Lot of Diesel This Time of Year?  
Do You Want Competitive Pricing?**

**BIG DISCOUNTS**

**Available**

**Starting as low as 500 Gallons  
Call for a Quote**

**Diesel \$ .749\***  
**Current Price Per**

**Plus Any  
Applicable  
Taxes**

**GET THE McCULLOUGH ADVANTAGE**

- Serving the Community Since 1953
- Serving the South Central Pennsylvania and Northern Maryland Areas
- Inquire about Alternative Payment Methods for Credit Approved Customers.

**McCullough  
Oil Service**

**717-235-6809  
410-692-2121  
800-296-6809**

• Prices Subject to Change

