

HOG MARKETS



HAY & GRAIN MARKETS

Lancaster Hogs

Lancaster Stockyards
 Wednesday, May 13, 1998
 Report supplied by USDA
HOG MARKET TODAY 840 HEAD; LAST WEDNESDAY 884; LAST YEAR 943.
BARROWS AND GILTS: COMPARED TO LAST WED., PRICES WERE STEADY ALTHOUGH 2-3 3.00-4.00 HIGHER.
 US#1-2: 240-260 LBS. 42.00-42.50.
 US#1-3 220-250 LBS. 40.50-41.50.
 SOWS: STEADY. US#1-3 350-450 LBS. 20.00-23.00, 450-500 LBS. 23.00-25.00, 500-600 LBS. 25.00-27.00.
 BOARS: 300-600 LBS. 15.00; FEW 220-260 LBS. 18.00-21.00.

Indiana Hogs

Springfield, IL
 Thursday May 14, 1998
 USDA-IDA Market News Service
 Indiana-Ohio Direct Hog Flash
 Barrows and Gilts: steady to fully .50 higher. Demand good on light to moderate run.
 Country Plant US 1-2 230-260 LBS. 42.50-43.50, few 44.00-44.50 43.50-45.50
 US 2-3 230-260 LBS. 39.00-42.00
 210-230 LBS. 35.00-39.00
 Sows: steady.
 US 1-3 300-400 LBS. 24.50-26.50
 400-500 Lbs. 25.00-27.00 500-600 LBS. 27.00-29.00 Few over 600 lbs. 29.00-31.00
 Boars: over 300 lbs. 16.00-17.50 under 300 lbs. 20.00-25.00
 Preliminary estimate: 27,000 Source: USDA-Illinois Dept of Ag Mkt News, Springfield, IL 217-782-4925 1000c:jc--O-

New Holland Feeder Pigs

New Holland, PA
 Wed., May 13, 1998
 Report Supplied by USDA
TODAY 615 HEAD LAST WEDNESDAY 615 LAST YEAR 996
TREND: COMPARED TO LAST WED., SMALL SUPPLY FEEDER PIGS MOSTLY STEADY. SUPPLY INCLUDED NEAR 70 PERCENT SOLD FOR SLAUGHTER. ALL PIGS WEIGHED ON ARRIVAL AND SOLD BY THE HUNDRED WEIGHT.
 US#1-2: 117 HEAD 41-55 LBS. 54.00-58.00.
 US#2: 55 HEAD 33-38 LBS. 60.00-67.00.
 SLAUGHTER: 9 HEAD 33 LBS. 120.00; 65 HEAD 32-36 LBS. 80.00-100.00; 154 HEAD 39-66 LBS. 52.00-70.00; 6 HEAD 77 LBS. 48.00; AS IS 58 HEAD 15-23 LBS. 70.00-90.00; 46 HEAD 32-68 LBS. 35.00-42.00.
 ALL PIGS CONSIGNED TO WED. FEEDER PIG SALE MUST ORIGINATE FROM A QUALIFIED NEGATIVE OR MONITORED HERD.

State Graded Feeder Pig Sale

Carlisle Livestock Market, Inc.
 Friday, May 8, 1998
RESULTS ON 1204 PIGS.
TREND: COMPARED TO APRIL 24, STATE GRADED SALE, PIGS WERE STEADY TO 5.00 LOWER. ALL PIGS ARE FROM QUALIFIED OR MONITORED HERDS AND WERE WEIGHED ON ARRIVAL AND SOLD BY THE HUNDREDWEIGHT.
 US#1&2: 976 HEAD. 49 HEAD 20-27 LBS. 70.00-71.00; 76 HEAD 35 LBS. 61.00-80.00; 235 HEAD 41-49 LBS. 58.00-72.00; 404 HEAD 50-59 LBS. 62.00-71.00; 16 HEAD 73-94 LBS. 46.00-75.00.
 US#2: 156 HEAD. 15 HEAD 19-29 LBS. 62.00-65.00; 5 HEAD 28 LBS. 25.00; 82 HEAD 44-49 LBS. 55.00-57.00; 37 HEAD 54-59 LBS. 50.00; 17 HEAD 60-69 LBS. 40.00-45.00.
 US#2-3: 14 HEAD 40-50 LBS. 21.00-32.00.
 AS IS: 58 HEAD 20-115 LBS. 20.00-31.00.
 NEXT STATE GRADED FEEDER PIG SALE MAY 22. RECEIVING FROM 6:30-10:30 A.M. SALE 1 P.M.

Diffenbach Auction Center

New Holland, Pa.
 Monday, May 11, 1998
 Report Supplied by Auction
TOTAL LOADS: 114.
 ALFALFA: 125.00-220.00.
 MIXED HAY: 75.00-217.00.
 TIMOTHY: 96.00-170.00.
 ORCHARDGRASS: 97.00-145.00.
 STRAW: 100.00-132.00.
 EAR CORN: 97.00-102.00.
 OATS: 2.20-2.50 BU.

Green Dragon

May 8, 1998
 Hay, Straw & Grain
 Report Supplied by Auction
TOTAL LOADS: 57.
 MIXED HAY: 20 LOTS, 70.00-205.00.
 ALFALFA: 6 LOTS, 127.00-185.00.
 TIMOTHY: 4 LOTS, 117.00-145.00.
 STRAW: 12 LOTS, 100.00-135.00.
 EAR CORN: 10 LOTS, 88.00-102.00.
 ORCHARD GRASS: 2 LOTS, 100.00-117.00.
 OATS: 2.40 AND 2.45 BU.

Wolgemuth Hay

Leola, Pa.
 Wed., May 13, 1998
 Report Supplied by Auction
TOTAL LOADS: 124.
 ALFALFA: 80.00-230.00.
 STRAW: 92.00-131.00.
 GRASS: 110.00-177.00.
 TIMOTHY: 105.00-135.00.
 CORN: 90.00-103.00.
 MIXED HAY: 42.00-220.00.
 OATS: 2.00 BU.

New Holland Hogs

NEW HOLLAND, PA
 MON MAY 11, 1998
 USDA-PA Dept Ag Market News
 NEW HOLLAND HOG FOR MONDAY MAY 11, 1998
 HOG RECEIPTS TODAY 892 LAST MONDAY 1033 LAST YEAR 720
BARROWS AND GILTS: Compared to last Monday, prices 2.50 higher. US 1-2 220-270 lbs 40.50-42.00 Several up to 43.00 US 1-3 240-300 lbs 38.00-41.00
SOWS: Steady to 1.00 lower. US 1-3 300-400 lbs 22.00-24.00 400-500 lbs 24.00-27.00 500-650 lbs 25.00-28.00
BOARS: 300-700 lbs 16.00-17.00

Leinbach's Hay

Shippensburg, PA
 May 9 and 12
 Report Supplied by Auction
68 LOADS.
 ALFALFA: 100.00-204.00.
 MIXED HAY: 64.00-170.00.
 TIMOTHY: 85.00-160.00.
 CLOVER: 75.00-90.00.
 BROMEGRASS: 92.00-112.00.
 ORCHARDGRASS: 52.00-80.00.
 STRAW: 65.00-110.00.
 EAR CORN: 85.00-100.00.
 OATS: 2.55 BU.
 MULCH: 37.50.
 STUBBLE: 50.00.

The Windmill

Penn Yan, N.Y.
 May 8, 1998
 Report Supplied by Auction
TIMOTHY: 40.00-65.00.
 ALFALFA GRASS: 1ST CUTTING 86.00-104.00, 2ND 175.00-210.00.
 REED CANARY GRASS: 80.00-85.00.
 STRAW: 82.00-85.00.
 HAY SALES FRI. 9 A.M. SHARP.
 PLANTS AND PRODUCE 10 A.M.

Morrison's Cove Auction Hay

Morrison's Cove
 Report Supplied by Auction
 May 11
 GRASS: 115.00-192.50.
 TIMOTHY: 107.50-142.50.
 MIXED HAY: 117.50-167.50.
 REED CANARY GRASS: 167.50.
 STRAW: 75.00-97.50.
 HAY AUCTIONS EVERY MON. AT 12:30 P.M.

Vintage Hay

Paradise, PA
 Thurs., May 14, 1998
 Report Supplied by Auction
ALFALFA: 142.00-226.00.
 TIMOTHY: 95.00-110.00.
 MIXED HAY: 95.00-108.00.
 GRASS: 102.00-133.00.
 STRAW: 105.00-117.00.
 SALE TIME 12 NOON.

Morrison Cove Hay Auction

ROARING SPRING, PA
 May 14
 Report Supplied by Auction
 MIXED HAY: 115.00-185.00.
 TIMOTHY HAY: 75.00-105.00.
 SALE EVERY THURS. AT 1 P.M.

Hay Market Summary

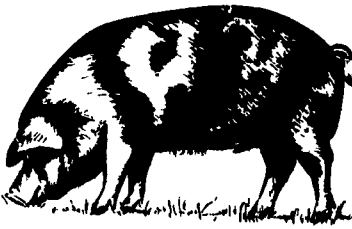
May 11, 1998
 Eastern Pa.
HAY & STRAW MARKET FOR EASTERN PA. - (ALL HAY NO. 2 AND BETTER. PRICES PAID BY DEALERS AT THE FARM & PER TON.) HAY & STRAW MOSTLY STEADY TO WEAK.
 ALFALFA 100.00-160.00 FEW TO 90.00, MIXED HAY 90.00-130.00, FEW TO 150.00; TIMOTHY 80.00-130.00, FEW TO 160.00; STRAW 60.00-95.00; MULCH 45.00-60.00, FEW TO 25.00.
SUMMARY OF LANCASTER CO. HAY AUCTIONS FOR WEEK ENDING 05/08/98. PRICES PER TON: LOADS: 212 HAY, 95 STRAW & 29 EAR CORN.
 ALFALFA 135.00-224.00; MIXED HAY 102.00-177.00; TIMOTHY 100.00-180.00; STRAW 100.00-137.00; EAR CORN 91.00-112.00.
SUMMARY OF CENTRAL PA HAY AUCTIONS FOR WEEK ENDING 05/08/98. PRICES PER TON: LOADS: 189 HAY, 29 STRAW & 19 EAR CORN.
 ALFALFA 120.00-185.00; MIXED HAY 80.00-145.00; TIMOTHY 80.00-135.00; STRAW 77.50-130.00; EAR CORN 80.00-100.00.

Dewart Hay & Livestock

Dewart, Pa.
 Monday, May 11, 1998
 Report Supplied by Auction
STEERS: TOO FEW TO QUOTE. HEIFERS: TOO FEW TO QUOTE. GOOD COWS: 33.00-43.00. CANNERS AND CUTTERS 25.00-33.00.
 BULLS: 40.00-48.50.
 VEAL 130-190 LBS. 100.00-170.00, 90-130 LBS. 30.00-100.00.
 HOGS: ONE PEN AT 39.25.
 SOWS: 23.00-27.00.
 FEEDER PIGS: 15.00-35.00 HEAD.
 HAY: 60.00-145.00.
 STRAW: 1 LOAD AT 95.00.
 WOOD: NONE.
 CORN: 85.00-90.00.
 OATS: 2.00-2.05 BU.

Westminster Hay

Westminster, Md.
 Tuesday, May 12, 1998
 Report Supplied by Auction
52 LOTS.
 ALFALFA: 3.00-3.80 BALE.
 TIMOTHY: 90.00, 2.40-3.20 BALE, 15.00-27.00 LARGE ROUND.
 MIXED HAY: 1.00-3.80 BALE.
 GRASS: 1.95-3.00 BALE.
 STRAW: 1.00-1.80 BALE.
 MULCH: .75 BALE.
 OATS: 3.00 BU.



PIGS
 STATE GRADED SALE
 RECEIVING 6-10:30 AM
FRIDAY
 May 22
 1 P.M.
 AT
Carlisle
 LIVESTOCK MARKET, INC.
 Exit 12 Off I-81 turn South
 (717) 249-4511 or
 Evenings Jim, 249-2359

CARLISLE LIVESTOCK MARKET, INC.
FED and FEEDER CATTLE SALE
TUES. MAY 19, 1998 7:00 PM
 Early Bird Pens Close 2 PM Turn South Off I-81 @ Exit 12
 Evenings Jim (717) 249-2359 Market (717) 249-4511



HERE TODAY • HERE TO STAY
For Buying or Selling Livestock
Call Dunlaps at (717) 397-5136

Slaughter Cattle Every Monday 9:30 AM

Feeder Cattle Sold in Conjunction with Monday Receipts

Receiving Market Hogs Wednesday 6:30 AM To 11:30 AM

Sheep & Goats Auction Back By Popular Demand call Jim Hunsicker

SPECIAL FEEDER CATTLE SALES
May 29 Sale Starts at 12 Noon

Consignments welcome
 Call Butch Brown or Leon Hoover

Walter M. Dunlap and Sons
LANCASTER STOCKYARDS
 An Old Line Commission Firm Dedicated to Livestock Marketing for the 21st Century!

ELCO #72414

14% Flaked Dairy Feed
\$156¹⁹ PER TON BULK
 Price is 4 ton Bulk includes Early Order, Mid Week Volume and Cash Discounts

PENNFIELD GRAIN BANK
 Prices Week Of 5/18/98

Corn \$2.84 Bu
 Soybeans \$6.64 Bu
 Barley \$2.05 Bu

- Use Grain "Same As Cash"
- Prices Updated Weekly
- Grain Back-Hauling
- No Storage Charges When Applied To Feed Purchases
- Yearly Statement of Grain Transactions Available

CUSTOMER SERVICE DEPT
 OPEN 24 HOURS
 1-800-995-0333
 pennfield feeds

Lancaster Farming

Four Sections

DEPARTMENTS

Editorial A10
 Farm Calendar..... A10
 Futures A16
 Mailbox Markets.....B23
 Sale ReportsB30
 Public Auction Register.....B31
 Business News D 4

FEATURES

Farm Bureau Issues..... A20
 PDA Nutrient Management A32
 Leadership Training..... A34
 Tree Farm..... A36
 Logger Certification..... A37
 Bradford FFA..... A40
 Lamb Cook Off.....B 2
 Farm Women Rally.....B12
 Lamb & Wool Queen.....B14
 Wool Festival.....B14
 Capitol DaysB19
 Teacher BanquetB22
 Manor FFAC 2

COLUMNS

Now is the Time..... A10
 On Being A Farm Wife.....B 5
 Family Living Focus.....B 7
 Ida's Notebook.....B 9
 All Gardens.....B16
 Taking Time.....B17
 Consuming Thoughts.....B18
 Classified Ads.....C 4
 Livestock Ledger D 2
 Farm Management D 3

HOME AND YOUTH

Homestead NotesB 2
 Home On The RangeB 6
 Cook's Question CornerB 8
 Kids Kormer.....B10
 4-H Happenings B16, B23
 You Ask, You Answer.....B22

DAIRY

MD DHIA..... A40
 DHIA Focus..... A42
 Top PA DHIA D 6