

OVER 60 YEARS IN BUSINESS!

# WOLF MOTOR CO.

ROUTES 72 & 283, LANCASTER, PA 17601

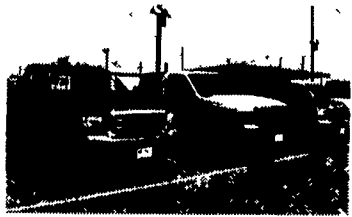
**CENTRAL PA'S**

**FORD TRUCK DEALER**

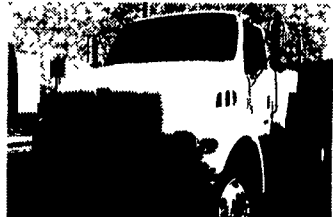
Sales Reps: Charlie Burke, Gary Brennenman, Dennis Asel, Mgr.

717-299-4331

Toll Free 800-637-6612



**1999 SUPER DUTIES  
IN STOCK**  
F-250 - F-350 - F-550



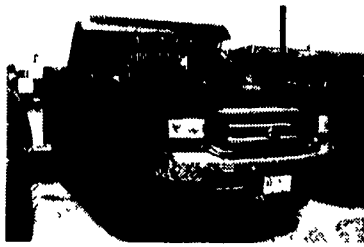
**1999 STERLING L7501**  
33,000 GVW, CAT 210 HP, 6 SPEED  
TRANS, 156" CA



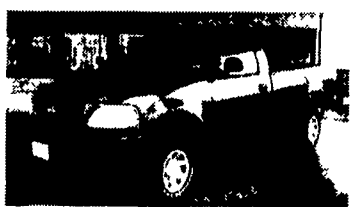
**98 FORD ECONOLINE  
CARGO VANS**  
E150's, 250's & 350's



**1997 FORD L8513**  
250 HP Diesel, 10 Speed Trans,  
10' Dump Body, 33,000 GVW,  
50,000 Miles **\$44,900**



**1999 FORD F450 4x4**  
Power Stroke Diesel, Auto,  
9' Dump Body w/Tarp  
**\$38,953**



**1997 FORD  
'97 LEFTOVER F250 4x4**  
5.4 L V-8, Auto, AC, AM-FM, Trailer  
Towing Pkg.  
**\$20,835**

**1985 Mack Super Liner**  
350 Cummins, 10-Spd. Trans., Good Rubber,  
New Brakes, AC  
**\$9,500**  
**717-529-2512** No Sunday Calls

**1978 GMC Brigidere**, 6V53 Detroit diesel,  
25,000 miles on new engine, 10 speed trans.,  
33,500 GVW, good Michelin radial tires, double  
frame, hyd. PS, mechanically sound, but needs  
some cosmetics.....**\$7,500 OBO**

**1981 1700 IHN**, 9 liter diesel, new rebuilt, 5-  
speed trans. & 2-speed rear, almost new  
Michelen radial tires w/Daffin mobile feed  
grinder, slowed down mill, hyd. feed table  
augers, hyd., air-locks & concentrate auger  
w/rebuilt 471 Detroit. Truck & mill in excellent  
condition. Will separate.....**\$25,000 Complete**

**Daffin Mill Parts:**  
A complete rotor w/pulleys  
Singer feed for feed table  
Roughagizer complete  
Rear mixer shield, fair cond.  
(2) Hyd. tanks  
Pneu-weigh system complete,  
should be rebuilt **Make Offer**  
9 speed Spicer, trans., good cond. **\$500 OBO**

2-way radio system  
(3) 25 watt mobil radios  
(1) 40 watt mobil radio  
10' base antenna, (3) mobil antennas (2) 110 volt  
to 12 volt converters, (1) power booster.  
80' tower **\$1500 OBO** - Will separate.

**ED'S CUSTOM MILLING**  
7500 Rice Road, Shippensburg, PA 17257  
717-530-1778 • 717-532-3842

# JONES

Goodwrench **ENGINE**  
**HEADQUARTERS**

GM GOODWRENCH  
350 V8 1973-85  
Part Number  
10067353  
New Engine - Not  
Rebuilt  
36 Month or 50,000  
Mile  
Warranty  
New Engine - No Core Fee **\$1199.00**

**WE'LL  
MATCH ANY  
COMPETITOR'S  
PRICE!**

**6.5L  
GOODWRENCH  
DIESELS**  
From  
**\$3,175**

Call 394-0711 for prices on other New or  
Remanufactured  
Goodwrench Engines. 2.5 Liter thru  
454 cid. Gas and Diesel

Chevrolet - Pontiac - Olds - Buick - Cadillac - GMC

## JONES GM PARTS CENTER

1335 Manheim Pike, Lancaster, PA 17604  
Easily Located on Rt. 72 Just off of Rts. 283 & 30  
Hours: Mon-Fri 7:30 a.m. - 9 p.m. Sat 7:30-3  
(717) 394-0711

**GM PERFORMANCE  
PARTS**

# JONES BEST BUY 4X4'S TRUCKS

**Largest Stocking &  
Selling Extended  
Cab GMC Dealer in  
7 States**

**PONTIAC • HONDA  
GMC TRUCK**

**1335 Manheim Pike, Lancaster**

Prices based on straight sale, Tax & Tags  
extra. Trades accepted at actual cash  
value. Must present this ad at time of  
purchase for sale price.

# JONES

# 717-394-0711

 <b>'93 DODGE DAKOTA XCAB</b> 4x4, AT, V8, AC, LE, Black #7910 Was \$15,888 <b>SALE \$13,700</b>	 <b>'95 GMC C25 SUBURBAN</b> Diesel, 6.5 Turbo, AT, AC, SLE, #7870, Was \$26,400 <b>SALE \$23,750</b>	 <b>'94 FORD F150 4X4</b> AT, AC, 4.9L, Clean #7869, Was \$11,400 <b>SALE \$9,750</b>	 <b>'95 CHEV K25 XCAB 4X4</b> 8600 GVW, Silverado, AT, AC 350 #7793, Was \$19,900 <b>SALE \$17,400</b>	 <b>'97 GMC XCAB 4x4</b> 5 Spd., AC, SL, Vortec, 4300 Engine #7911 Was \$19,975 <b>SALE \$17,985</b>
 <b>'87 FORD RANGER XCAB</b> AT, V6, XL, Clean #7882 Was \$5,900 <b>SALE \$3,450</b>	 <b>'90 GMC K JIMMY</b> 350, AT, AC, SLX #7867, Was \$9,900 <b>SALE \$7,800</b>	 <b>'93 GMC CONVERSION VAN</b> AT, AC, V6, TV, VCR, T, Low Miles, #7895, Was \$14,888 <b>SALE \$12,488</b>	 <b>'91 FORD RANGER 4X4</b> Auto, AC, V6 #7862, Was \$9,000 <b>SALE \$7,850</b>	 <b>91 GMC 12 CUBE VAN</b> AT, AC, V8, Bi-fuel With Propane #7917 Was \$10,400 <b>SALE \$9,000</b>
 <b>'95 CHEVY K35 4X4 DIESEL</b> AT, 6.5 Turbo, Silverado, AC, Dually #7902 Was \$25,775 <b>SALE \$21,800</b>	 <b>'90 PONTIAC TRANSPORT</b> AT, AC, V6 6 Pass #7909 Was \$7,850 <b>SALE \$5,750</b>	 <b>'93 GMC K25 XCAB 4X4</b> AT, AC, 350, 8' Bed #7822, Was \$15,900 <b>SALE \$12,550</b>	 <b>'96 GMC SUBURBAN 4x4</b> AT, AC, SLE, 350, Clean #7900 Was \$28,400 <b>SALE \$25,800</b>	 <b>'95 DODGE CARAVAN</b> Sport, AT, AC, V6 #7884, Was \$9,995 <b>SALE \$7,985</b>
 <b>'98 GMC CREW CAB 4x4</b> 6.5 Turbo, SLE, 10,000 GVW, Loaded, 10K Miles, #19999, Was \$38,400 <b>SALE \$34,480</b>	 <b>'95 GMC SUBURBAN 4X4</b> AT, AC, SLT, 350 #7903 Was \$25,800 <b>SALE \$23,750</b>	 <b>'95 GMC JIMMY 4x4</b> AT, AC, V6, 2 Dr. #7888, Was \$14,800 <b>SALE \$11,477</b>	 <b>'91 CHEVY S10</b> V6, 5 Spd., AC #7851, Was \$5,900 <b>SALE \$3,850</b>	 <b>'94 GMC K15 4X4</b> AT, AC, V8 #7815 Was \$16,988 <b>SALE \$14,200</b>