



94 Chevy 3500 15 Passenger Beauville Van
350 V8, AT, Dual Heat & Air, R.W. Defroster, PL, PW T, C, 59,000 Miles
Was \$16,990 **NOW \$14,990**
(3) 98 Chev. Contractor Dump Trucks in Stock



94 Chevy C3500 8ft. Contractor Dump Truck
350 V8, Dually, AT, Thiele Dump Body, 11,000 GVW, Elect. Hoist, PTO, only 30,000 Miles
Was \$15,900 **NOW \$14,990**

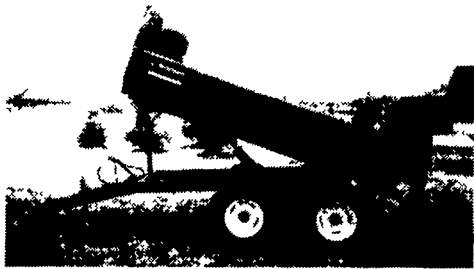


4111 Pottsville Pike (Rt. 61 North)
Reading, PA 19605

610-921-0261

FARM DUMP TRAILERS

(Direct from the Manufacturer)

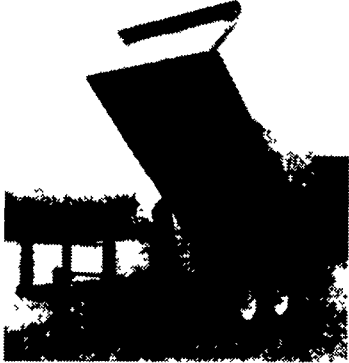


6-Ton Dump Trailer

- 10 ft. x 7 ft.
- Floating Tandem Axle
- 3 ft Front, 3 ft Tailgate & Grain Chute
- 16 in Extendable Sides
- 10 ga. Floor & Sides
- 11Lx15 Flotation Tires
- 2-Way 4 in x 24 in. Hydraulic Cylinder

7-Ton Road Dump Trailer

- Fifth wheel or bumper type
- 16 ft. x 8 ft. deck 3 ft. front rack and pockets side & back
- D.C. hydraulic pump & battery mounted in locking tool box
- 12 ton drop leg jack
- 10 ga. floor
- 6x3x3/16 tube main frame
- Sealed beam lighting
- 7000 lbs. per axle rating
- Electric brakes on both axle
- 16" tires on white spoked rims
- \$6400 U.S. delivered in Northeast U.S.A.



BERKELMAN'S WELDING

RR 7, AYLMEER, ONTARIO, CANADA N5H 2R6
(519) 765-4230

35 TRUCKS & TRAILERS

Utility trailer for sale, 10,000 GVW. Lancaster Co. 717-665-7174.

Valley 18' stock trailer, very good condition, \$3200 firm. 610-799-2649

1990 Mack, CH613, 224" WB, 42" standup sleeper, elite interior, air ride cab, REMACK E7 400 150K mi., Eng. brake, rebuilt RTX14609B, Mack 4000 # air ride suspension 3.65 ratio, 11R22.5 alum. front, steel rear, air slider, A/C, RED. \$27,000

1992 Freightliner, FLD11264ST, 212" WB, 48" air ride sleeper cab full fairings, 350 CAT 170K mi. on rebuild, jake brake, RTX12609B, 40,000 # air ride suspension, Eaton 4.11 ratio rears, L/P 24.5 alum. front, steel rear, air slider, P/S, A/C, Tilt/Tele, blue. \$19,500

(4) 1980 STRICK dry van, exterior post, 48"x96"x13'6", swing doors, LP 24.5 spokes, no slider. \$1600 - \$2200 (sale or rent)

1982 GREAT DANE reefer 45'x96"x13'4", Corner Eagle, swing doors, side door, slider, LP 24.5, steel budds. \$3500

Misc. Parts & Equipment

1982 Corner Eagle Reefer unit, Kubota diesel, \$750
Transmission RT14609A, 9spd, excellent, \$500
Mack R Model Bumper, chromed, new take off, \$200
Mack rear axle housing, no cracks.
Dock plate leveler, mechanical, 7'x6'-16" lip, requires a 23" pit, \$100

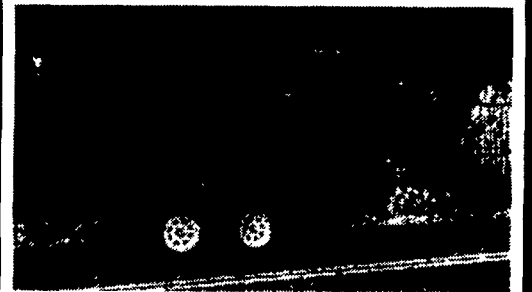
Weekdays 717/362-8117
Nights & Weekends 717/362-3678
Ask for Steve

Lancaster Farming, Saturday, May 16, 1998-D41

WANTED: Gooseneck aluminum cattle trailer; Forage wagon w/roof. 814/749-8489.

White 4000 w/Side-OMATIC boom, tandem axle, 250 Cummins, 10-speed, \$3500. 610-287-1800

Load Boss Trailers



Quality Built Hwy. Dumps

Built To Suit Your Working Needs

6x10 7,000 GVW.....\$2,999

6x10 10,000 GVW.....\$3,299

Delivery Available

Save \$ Buy Direct
From The Manufacturer

814-623-8696

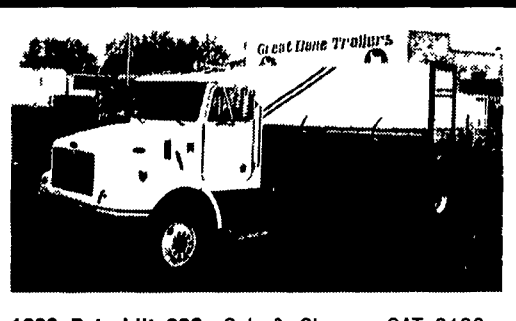
HUNTER KEYSTONE PETERBILT LP



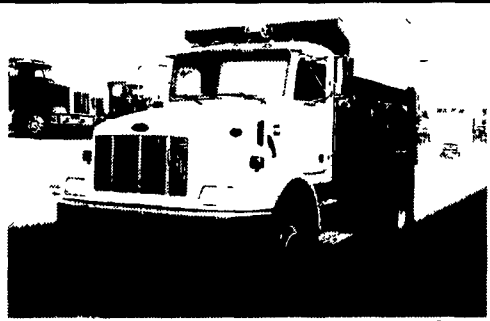
1467 Manheim Pike • Lancaster, PA 17604
717 299-6630 • 800 243-2458



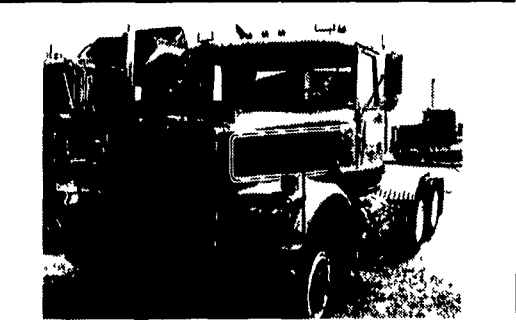
1998 Peterbilt 357 Tri Axle, Dump Chassis, Cat C10/C12, 8LL Trans, 18# Frt. & 46# Rears, Air Trac Susps., Single & Double Frame Avail.



1998 Peterbilt 330, Cab & Chassis CAT 3126 - 250 HP, 12,000 FA, 21,000 RA, 33,000 GVW, 6-spd. Trans, for 24 Ft. Body



1998 Peterbilt 330 Cat 3126, 275 HP, 9 Speed Trans., 10# Frt. & 23# Rear, Air Trac. Susp., 10' Steel Dump



1989 White Glider Cab, NTC 350 Cummins, RTO 146, 13 Speed, Sq. Hd Rear Axle, Hendricks Susp

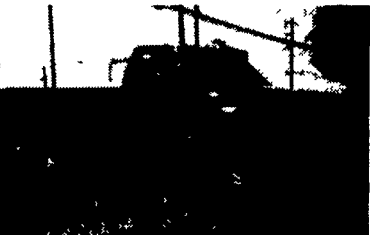
USED TRUCKS



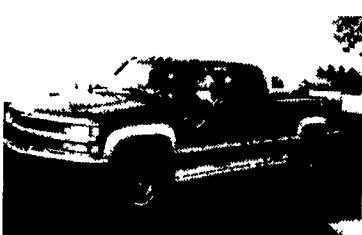
97 GMC SL 2500, Ext-Cab, 4x4, 350 Vortec Eng., AT, AC, AM-FM-Cass., Cruise, Tilt, 3.73 Limited Slip Rear, Local One Owner, 28,000 Miles, Green
\$22,900



97 GMC Crew Cab Dual Wheel SLV, 454 Vortec, AT/OD, PL, PS, PW, Cruise, Tilt, AM-FM-Cass.-CD, 4 10 Ltd Slip Rear, Blue, 12,000 Miles
\$26,500



95 Chevy K-2500 Cheyenne, 4x4, 350, F1 Eng., AT, AC, AM-FM Cass., Cruise, Sliding Rear Window, 8600 GVW, 4 10 Limited Slip Rear, Red, 51,000 Miles
\$16,700



96 Chev 2500 Silverado, Ext Cab, Shortbed, 4x4, 350 Vortec, AT, A/C, Loaded, 4 10 rear, 8600 GVW, Sliding Rear Window, Teal & Silver, 29,000 Mi
\$22,500



94 Chev K-2500, Silverado, 4x4, 6.5 Turbo Diesel, AT, AC, Loaded, 8,600 GVW, 4 10 Limited Slip Rear, 45,000 miles Black & Silver
\$18,300

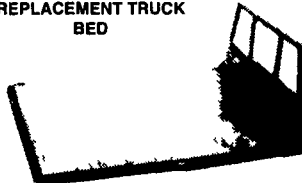


94 Chev 3500, Cheyenne, Crew Cab 350 F1, AT, AC, AM-FM, 9,000 GVW, 4 10 Limited Slip Rear, Local One Owner Maroon, 123,000 Miles
\$12,500

MARTIN'S AUTO SALES

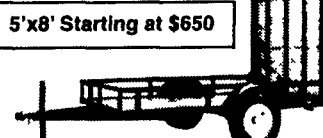
1025 W. Main St. New Holland, PA 17557
(717) 656-6621

ALL STEEL REPLACEMENT TRUCK BED



7'X70"W or 80"W
8 1/2' Lx80"W or 90"W
10'Lx85"W, 12'Lx85"W

Also Available in 4'x7' and 4'x8'



5'x8' Starting at \$650



UTILITY (TILT OR GATE MODEL) SIZES:
5'x8', 5'x10' 2000# GVW - 5'x10'
6'5"x10', 6'5"x12', 3000# GVW



UTILITY WITH GATE-SIZES:
16'x77" 18'x77", 7,000# GVW

CAR HAULER TRAILER:
16'x78" & 18'x78" Includes 5' Beavertail
7,000 lb. GVW 4' self storing ramps

Quality Trailers Built Locally By "PA International"

Car Dollie



Sale \$795

Highway Hydraulic Dump

BRI-MAR



5'x8', 3000# \$2,150
5'x8', 5000# \$2,495
6'x10', 7,000# \$3,195
6'x10', 10,000# \$3,495
7'x12', 10,000# \$3,995

FREE BATTERY

LOW PROFILE DUMP TRAILERS



6'x10' GVW low profile dump trailers w/ landscape gate
7,000# \$2,495
10,000# \$2,995

FREE BATTERY

Starting At \$3995 w/4' Adj. Tail



GOOSENECK SIZES: 20'x8' 12,000# or 14,000# GVW, 24'x8' 14,000# GVW

Low Profile construction
16'x77" & 18'x77"
10,000 # GVW



DECK-OVER CONSTRUCTION
14'x7' With Tail, 3000# or 4000# GVW
16'x8' With Tail, 7000# GVW
20'x8' w/Tail 10,000# GVW \$3,295

Over 300 Trailers In Stock
Starting At \$475.00
T-Plates
DEALERS WANTED



KUTZ FARM EQUIPMENT, INC.
Pine Grove, PA (717) 345-4882 FAX: (717) 345-2881

8 AM-5 PM Monday To Friday
8 AM-12 Saturday Or By Appointment