

'93 Dodge LE 150 Club Cab, 2WD, 360 auto, PS, PB, PW, PDL, cruise, tilt, air, AM-FM cassette, limited slip diff., charcoal & silver w/matching fiber-glass cap, one owner, excellent condition, \$10,900. 717-733-2873

'94 Dodge B350 Maxi Van, 11 pass., 360 auto, PS, PB, cruise, tilt, dual air, AM-FM cassette, 38,000 miles, burgundy, \$11,995. 717-733-2873

'94 Ford XL F250 super cab, 2WD, 351.5 spd, PS, PB, AM-FM cassette, 8,800 GVW, 51,000 one owner miles, black, excellent condition, \$12,500. 717-733-2873

95 Ford dually XLT, 460/4:10 rears, 37,000 miles, excellent condition, \$19,000. 301/698-0954.

'96 FL50 XLT, 4x4, 302, 5-speed, \$31,500. Shortbed w/cover, fully loaded, \$16,000 OBO. 717-336-4635

Auto car, tandem axle, roll back. 717-463-3701 JAY FULKROAD & SONS

Enclosed mechanics tool body, very good condition \$1000, 215-598-3768.

FORD F350, gas, 1989 Dualie, 5 spd, 4:10, 44K miles, 2 hitches, 400" motor, one owner, \$10,000. 410-833-9091

FOR RENT: 32' flatbed trailer, \$15/day, \$80/week. 717-733-8246

FOR SALE: 1985 Transcraft flatbed trailer, spread axel, on air, aluminum wheels. \$4,000/obo. 717-274-7484.

FOR SALE: 1985 42'-Transcraft flatbed trailer, spread axel, on air, aluminum wheels. \$4,000/obo. 717-274-7484.

FOR SALE: 1997 Chevy S10, 500 miles, estate sale, short bed, 4-cyl., auto, \$9000 OBO. Potter Co. 814-274-9388

FOR SALE: 20' heavy, aluminum truck bed, 5' high sides, 30 ton hoist. 717-527-2441.

FOR SALE: 326 NH baler w/thrower. 3 haywagons. 717-527-2441.

Ford 1951, F-8 w/dump, 337V8, 5-speed, 2-speed, AB. 717-367-7403

Ford 1969 N-1000, C&C, 534V8, 5-speed, 2-speed, AB, starts, drives, stops. 717-367-7403

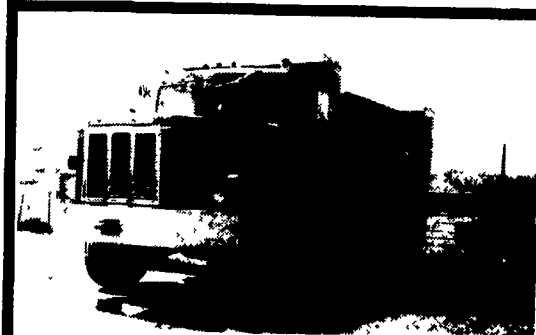
Ford 350 truck, 1978, 460 engine, new tires-transmission-brakes-master cylinder. Trailer brake controls, 5th wheel and rear hitches included. (717)523-8484.

Knapheide utility bed, wide box, 90"x9", \$950 OBO. 717-426-2659

1997 16' Bison stock trailer
Tandem axle, like new
\$3,000
- Call -
410-357-4073
After 7 pm.

1987 Cobra 39' aluminum dump, frameless on spread axle with air ride, 2-way tailgate, roll tarp, 11R-24.5 tires.
410-275-2605

MOTORS
New & Rebuilt
350, 366, 427, 454
6.2 Diesels
Rebuilt & Used
Will Install
Roll Back Service,
(at cost)
717-762-6415



1975 IH Paystar 5000, 290 Cummins, 13 Speed Trans., Good Rubber, New Brakes, Pintle Hook. \$9,000 OBO.
717-354-4160



1992 Volvo WIA64TES, DD Series 60 (425), Jake Brake, Fuller RTO 14613 Trans., RT 40 145 Rears, 3.73, 11x24.5 Tires. Priced to Sell - \$20,000
(717) 653-4084

72 White T-A Truck Tractor Conv. 318 Detroit. Good Rubber. Inspected. Good Cond. Motor is Tired. \$1,200 OBO
717/653-4830

'81 Ford 350, 351 motor, steel 10' bed, 5th wheel hook-up & brake, nice
\$2600

'82 Ford 350 w/300 motor, 10' wooden bed, very nice
\$2600

814-667-2297

Ford 93 150XLT, 4x4, Super Cab, 5L 8-cyl. engine, auto, air, loaded, 43,000 miles, very clean. 717/292-2383.

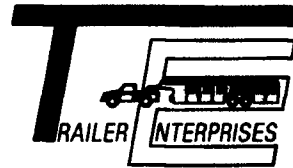
IH 1800 14' Midwest grain & livestock body, nice shape, 610-469-9633

MACK PARTS FOR SALE:
Engines, blocks, heads & cranks, cabs, hoods & doors, trans, rears,
ALL MACK PARTS REASONABLE PRICES
MACK TRUCKS BOUGHT (complete or parts)
888-625-6485.

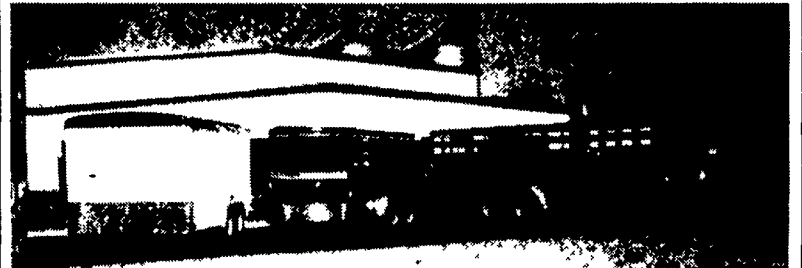


Liquid Manure Spreading Business
Morgantown Area, Serving 4+ Counties
5000 gal Vac Truck, (2) Manure Pumps (Lagoon & Pit),
11-year Established Customer Base Netting \$45K
\$30,000 for all
610-286-9708

"Revvin' to take care of ALL your trailer needs."



HAS BUILT A REPUTATION



United Expressline
8x16 Cargo

Bison
616HPT

EBY Aluminum
7x20 Gooseneck

NEW & USED: STOCK - HORSE - CARGO - INDUSTRIAL - UTILITY - CAR HAULERS

Trailer Enterprises is here to serve you. We are a full service facility providing YOU with the very best service available in the industry!

TRAILER ENTERPRISES, INC.
13121 MAUGANSVILLE ROAD
HAGERSTOWN, MD 21740

Just give us a call at (301) 791-5343.

Hours: 8AM-5PM Monday-Friday
9AM-12 Noon - Saturday



(4) 1998 ISUZU NPR DIESEL 5-Spd., 14,250 GVW, A/C, AM/FM Cass, Will Take 14'-15' Bodies. (How about a 12' Dump?)



1998 ISUZU NPR HD GAS, 250 HP V8, Auto, A/C AM/FM Cass, 14,050 GVW, 10' Omaha Dump

CALL US FOR YOUR New '98 or '99 ISUZU NPRS Arriving Daily



1997 ISUZU NPR 14,250 GVW, Auto Trans; 14' Van, A/C, AM/FM Cass; Stereo **HARD TO FIND**

Berks, Lebanon & Schuylkill Counties ONLY AUTHORIZED Isuzu Dealer

"0" DOWN LEASE RATES AVAILABLE

ISUZU TRUCK OF READING

800-485-2556

4226 Pottsville Pike, Reading, PA

E-TOWN DODGE

'91 Dodge 250 LE diesel, 4WD Reg Cab

(8) Used New Style Pickups mostly SLT's

1998 24 Valve New Style Diesel in stock

'96 Tahoe very nice
(24) '98 Club Cabs, gas & diesel
Full Size & Dakota

(4) 2500 Diesel Quad Cabs in stock

(7) Durango's in stock

ASK FOR MILTON HESS

Certified Truck Specialist
717-367-6644
717-653-6667
Elizabethtown, PA

EBY USED EQUIPMENT

BODIES

8'6"x88"x12" Used Aluminum Dump Body
18'x96" Cattle Body
1991 Eby 19'x8'x7'6" Horse & Cattle Body
(2) 10' Eby Cattle Bodies
(1) 9'x92" Eby Cattle Body

GOOSENECK

1988 Steel Wilro, 16'x76"x6'9"
(3) 1997 Eby Ruffnecks 24'x8'x6'9"

BUMPER HITCH

1992 Eby 16'x76"x6'6"

M.H. Eby, Inc.

1194 Main Street (Route 23)
Blue Ball, PA 17506
(717) 354-4971
(800) 292-4752
FAX (717) 355-2114
4435 State Route 29
West Jefferson, OH 43162
(614) 879-6901
(800) 752-0507
FAX (614) 879-6904

When agriculture is your life, the equipment choice is Eby.

EBY is the leading manufacturer of aluminum bodies and trailers for agri-transportation. Our products are designed for superior strength, reduced weight for greater payload capacity, minimum maintenance and higher resale value. In addition to premium standard features, we offer full custom options built to your specs.

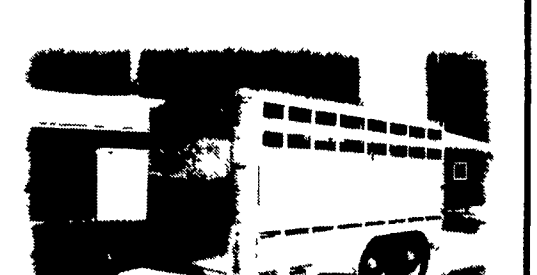
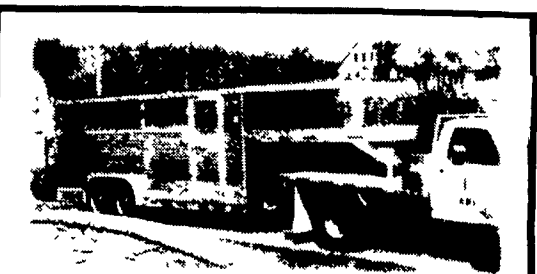
EBY's complete line includes models for every requirement:

- Gooseneck Trailers- lengths 14' - 32'; widths 7', 7'6", 8' and 8'6"
- Bumper Hitch Trailers- lengths 12' - 18'
- Grain Bodies- lengths to 24', plus landscape and general purpose dumps to 12'
- Flatbed Bodies- lengths to 32' in 5 widths
- Landscape Bodies- lengths to 12'

For quality equipment and customer service that works as hard as you do, nobody offers more than EBY.



Blue Ball, PA (800) 292-4752



Call for FREE color literature.