



CASE W30 4X4 WHEEL LOADER...\$25,000

Heavy Equipment Loader Parts, Inc.
10070 Allentown Blvd, Grantville, PA 17028
(717) 469-0039 - (800) 446-0505



CATERPILLAR 931B CRAWLER LOADER,
New Undercarriage.....\$18,000

Heavy Equipment Loader Parts, Inc.
10070 Allentown Blvd, Grantville, PA 17028
(717) 469-0039 (800) 446-0505

1a CONSTRUCTION EQUIPMENT

1946 D4 Caterpillar, very good undercarriage. 717-443-9931

1973 JD 500C backhoe. (717)366-8813.

1975 Cat 951C track loader, recent \$10K in overhauls, ready for work. \$14,500. 410/893-2405.

1992 Yale forklift, 5,000/lb, solid tire, LP gas, 2 stage mast, high-free lift 82x128, excellent cond. \$7,800/o b o . 717-203-0040.

(1) D9G Dozer; (2) D9H Dozers. Starting at \$32,000. 814-793-2829

24" Bucket, fits 225 Cat, excellent condition, used less than 400 hrs., \$1995. 717-527-2390

1990 Case 580K, 4WD, cab, E-stick, 4n1 bucket, auxiliary hydraulics, VG condition, \$27,500. (301)371-5500.

1990 Roger's 35 ton detach, 22.5' deck, excellent cond. 215-357-1123.

1991 INT 4000 Rollback Recon DT466. Airbrakes, 5spd. \$17,500. JCB Backhoe for parts \$2,500. 717-698-8311.

1985 JD 862 scraper, cab/air, good flights & chains, 5100 original hrs, excellent runner, excellent appearance. \$55,000. 410/893-2405.

1988 JD 310C, closed cab, used very little, only 3200 hrs. \$25,000. 717/743-0432.

1988 JD 455G crawler loader, excellent condition, \$29,000. (301) 371-5500.

UNDERCARRIAGE

PA Track & Welding Has Used Parts For Following Track Type Machines

CAT	CASE
D-3/931	450A/B/C
D-4D/941	855
D-5/D-5H/955	MISC
D-6H/963/955L	KM-D-31/37
JOHN DEERE	KM-D-53/58
450/455/555	TD-6/7/100E
655/750/755	TD-15E
755B/850	Liebherr-621/731
	631/731

- All parts inspected & Ready To Install
- 6 Month Warranty
- Delivered

CALL DALE AT 1-888-387-2510
Toll Free

THIS WEEKS SPECIAL

1) Set Case 450 A/B/C/D Track Groups
50% Rails, 60% Pads, Excellent P&B
Also, 2) Case 450C/455C Idlers
\$1300 For All

PA TRACK & WELDING

777 Forest Avenue, Bellefonte, PA 16823
(814) 383-2510; FAX: (814) 383-2069

1960 CAT D-4C 40A series with 4-A angle blade, Hyster D-4E winch, 500 hours on undercarriage, 3100 hours total, new paint and seat, super sharp, runs same. \$12,750 Flushing Ohio 740-968-3183

1977 White S/A dump truck, 318 Detroit diesel, 10 speed, PS, 38,000 GVW, \$5,500. 1987 Eager Beaver tag-along 9 ton trailer, \$2,000. JD 450-C bulldozer, 6-way blade, new U/C, \$13,000. Case 680-B tractor, loader, backhoe, \$6,500. Call after 6pm, (717)665-3180.

1980 45C Clark loader, forks, bucket, \$17,000. 717-244-7844 leave message

1984 Lull 844 8,000 lbs telescopic boom forklift, VG condition, \$24,500. (301)371-5500.

580E Case backhoe. 717-463-3701 JAY FULK-ROAD & SONS

'95 Case 1840 skid steer loader, Cummins engine, 650 hrs., \$14,000. 717-753-3391

AC forklift, 8000#, pneumatic tires, 2-stage mast, rebuilt, \$7900. 717-203-0040

AC rough terrain construction forklift, 4000lb, 21' lift, runs & works like new, \$6500. 215/598-3528.

Bantem T-644 excavator. 717-463-3701 JAY FULK-ROAD & SONS

Bros VP4D, 48" towable smooth drum roller w/ Wisconsin engine, VG condition, \$4,500. IR SPGEAS20 36" walk-behind smooth drum vibratory roller, water system, Kohler engine, \$1,500. Double drum towable sheep's foot roller, \$2,900. Wacker WDH86-110 double drum trench roller, \$4,500. Ralph Carter 4" water pump, diesel engine, towable, \$4,500. (301)371-5500.

Buckeye 302 trencher, good operating condition, factory installed hyd. system for all functions, w/ quick detachable boot, \$7500 OBO. 717/938-2241.

Case 1845C Uniloader w/ high flow hyd., Lowe 2150 auger attachment w/12" & 15" augers, 72" Hanson snowblower attachment. New condition, 62 hrs. \$27,500. 717/538-5654.

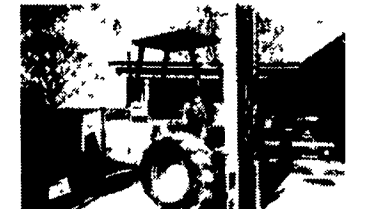
Case 1845 Skid Loader, good cond, tires, \$7,200. Call Jack 301-371-9346.



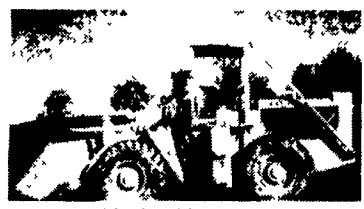
Furukawa FX040 Trackhoe, Rubber tracks, blade, side shift boom, cab, 2300 hrs, nice.....\$14,500



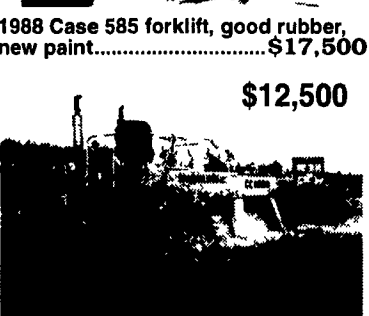
Condor 48 ft manlift, 4x4, good rubber, new paint, rotating basket..... \$14,500



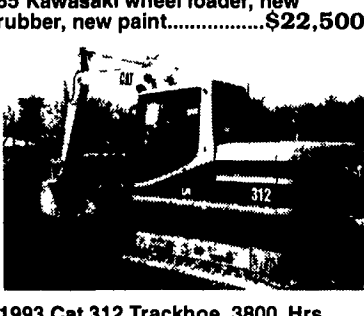
1988 Case 585 forklift, good rubber, new paint.....\$17,500
\$12,500



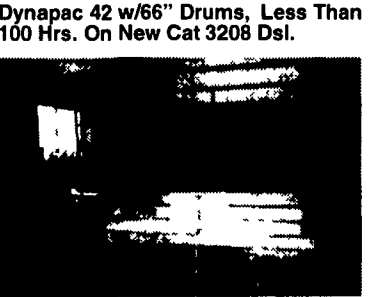
85 Kawasaki wheel loader, new rubber, new paint.....\$22,500



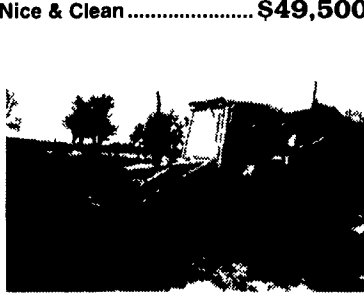
Dynapac 42 w/66" Drums, Less Than 100 Hrs. On New Cat 3208 Dsl.



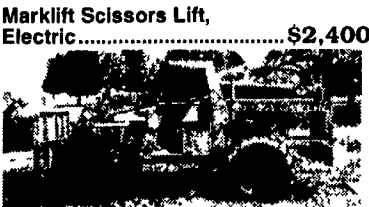
1993 Cat 312 Trackhoe, 3800 Hrs., Nice & Clean.....\$49,500



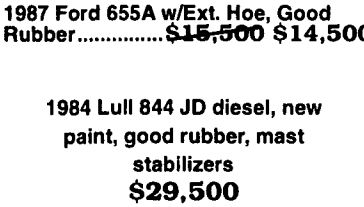
Marklift Scissors Lift, Electric.....\$2,400



1987 Ford 655A w/Ext. Hoe, Good Rubber.....\$15,500 \$14,500



1988 Lull 844, New Paint, Good Rubber.....\$30,500



1984 Lull 844 JD diesel, new paint, good rubber, mast stabilizers \$29,500

- JD 450C Crawler Loader..... Coming In
- 1990 Lull 522-4 JD diesel 4x4, 22 ft, new rubber, new paint...\$24,000
- 1987 Cat 416 TLB, full cab, heat.....\$17,500
- 1995 Gehl 4625 SX Skid Loader, low hours, new rubber.....\$12,900
- 1965 Cat 966B, 23.5x25 Rubber, Good Condition.....\$21,000
- 1993 Bobcat 7753, good rubber, nice.....\$13,200
- 1984 Condor 42, 4x4, manlift, new paint, good rubber.....\$14,900

AA Equipment

717/529-2512
No Sunday Calls

1797 Robert Fulton Hwy., Quarryville, PA 17566

- We Buy & Sell
- Financing Or Lease Purchase Available
- 90 Down NO Payment For 90 Days



DIGGING DOWN? POWER UP!

Kubota introduces the KX-Series mini-compact excavators from 22.2 HP to 42.7 HP, featuring Kubota's "Power Up" hydraulic system that increases digging performance and traveling speed

Whatever your construction needs, we have the right excavator for you. The KX-41 and KX-71 come with a two speed swing system that improves operator feel in delicate digging areas, while the KX-101 and KX-151 are equipped with the "TIPS" two pattern selection system that lets the operator choose the most comfortable operating pattern

If you require an excavator that delivers superior performance and digging capabilities, work a Kubota KX Excavator and "Power Up"



Kubota

Model	HP	Digging Depth	Operating Weight
KX-41	22.2	6'9" 1" - 7'11" 3"	3,615 lbs
KX-71	32.2	8'9" 1" 10" 2"	6,415 lbs
KX-101	36.6	10'1" 3" 12" 5"	8,115 lbs
KX-151	42.7	12'0" 3" - 12'8"	12,025 lbs

Prices Starting As Low As **\$356⁰⁰** per month.*

MESSICK FARM EQUIPMENT, INC.

Rheems Exit - Rt. 283, Elizabethtown, PA 717-367-1319, 717-653-8867



SUPER SAVINGS SALE

Purchase a new Bobcat® 773, 863 or 873 skid-steer loader and receive:



AVAILABLE AT:

EVERGREEN TRACTOR CO.

41 S. Fairlane Ave., Myerstown, PA 17067

717-866-2585 • 1-800-441-4450

*Financial program available only through Bobcat Financial Services on approved credit