

National Grain Market

St. Joseph, MO
Wed, May 06, 1998
USDA-MO Dept. Ag Market News
DAILY NATIONAL GRAIN SUMMARY
Sharp advances again for grain and soybean bids as weather conditions and some fund buying on the board added support. Wheat 3 to 7 cents higher. Corn 3 to 6 cents higher. Sorghum 11 to 15 cents higher. Soybeans 5 to 8 cents higher. Dry conditions in parts of the US Plains and wet weather in the Eastern Corn Belt region continued to push wheat bids higher, today. An overnight export sale of US wheat to Taiwan was also a price booster. Corn bids jumped sharply higher due to continued planting delays in the Eastern Corn Belt. Wet weather delays have sparked concerns over the potential for lower yields. Additional strength was offered due to some fund buying on the Board. There are still no export announcements for corn this week. Sharp gains were seen in soybean bids in reaction to improved soybean meal and oil demand. Forecasts for drier conditions in the Eastern Corn Belt next week offered some support to bean bids as it cuts the risk of swing acres going to oilseeds. Continued lack of foreign trade for soybeans, limited upturns.
U.S. Export Sales: PURCHASERS COMMODITY TONNAGE DEL DATE
Taiwan 12.5 pct Hard Red Winter Wheat 29,100 Jun/Jul 14.5 pct Dark Northern Spring Wheat 59,900 Jun/Jul 9.0 pct Western White Wheat 13,000 Jun/Jul
Totals: Wheat 102,000 tonnes.
Date Change Year ago Truck Bids: 05/06/98 05/05/98 05/07/97 Wheat: Kansas City (HRW, ORD) 3.35 up 7 4.55-4.57

Minneapolis (DNS, 14%) 4.05 1/2 up 4 1/2 4.45 3/4 Portland (SW) 3.36-3.40 up 5-6 4.70-4.76 St. Louis (SRW) 3.02-3.06 up 3-6 3.87-3.90
Corn, US 2 Yellow: Kansas City 2.57-2.59 up 5-6 2.81-2.82 Minneapolis 2.51 up 4 1/2 2.75 1/4 Southern Iowa 2.55-2.60 up 5 2.83-2.88 Omaha 2.45-2.46 up 3-4 2.72
Soybeans, US 1 Yellow: Kansas City 6.58-6.59 up 8 8.90-8.92 Minneapolis 6.46 up 5 3/4 8.80 Southern Iowa 6.50-6.59 up 5-7 8.85-8.93 Cent IL Processors 6.57-6.73 up 5 3/4-7 3/4 8.95-9.02
Futures: Kansas City (July) Wheat 3.35 1/4 up 7 1/4 4.25 Minneapolis (July) Wheat 3.78 1/2 up 9 1/2 4.22 3/4 Chicago (July) Wheat 3.16 up 7 4.04 1/4 Chicago (July) Corn 2.61 up 4 1/2 2.85 1/4 Chicago (July) Soybeans 6.56 up 7 3/4 8.84
Export Bids: Barge or rail, Port of New Orleans or North Texas Gulf. US 1 HRW Wheat, Ord. Protein: 3.60 1/4-3.65 1/4 up 9 1/4-7 1/4 4.73 US 2 Soft Red Winter Wheat: 3.21-3.23 up 7 4.24 1/4 US 2 Yellow Corn: 2.79-2.81 up 5-6 1/2 3.04 1/4-3.05 1/4 US 2 Yellow Sorghum: Rail 4.78-4.82 up 7-8 5.22 Barge 4.95-4.98 up 8-6 5.24-5.25 US 1 Yellow Soybeans: 6.81-6.83 up 7 3/4 9.15-9.17

CHOICE AND PRIME 2-4 1170-1465 LBS. 63.75-67.00, CHOICE 2-3 1190-1460 LBS. 61.25-64.50, 1480-1625 LBS. 57.75-61.00, SELECT 1-3 56.50-61.75, HIGH YIELDING UP TO 63.25, STANDARD 1-2 50.00-56.50.
HOLSTEIN STEERS: HIGH CHOICE AND PRIME 2-3 1425-1630 LBS. 57.50-59.75, ONE 1830 LBS. 60.25, CHOICE 2-3 1395-1565 LBS. 55.00-58.00, SELECT 1-2 50.00-55.75, STANDARD 1-2 41.75-50.00.
HEIFERS: HIGH CHOICE AND PRIME 2-4 1110-1355 LBS. 63.50-66.50, CHOICE 2-4 1125-1310 LBS. 60.00-63.75, SELECT 1-3 55.00-60.75, STANDARD 1-2 43.00-53.25.
COWS: FEW EARLY SALES BREAKING UTILITY AND COMMERCIAL 2-4 38.00-43.00, CUTTER AND BONING UTILITY 1-3 35.00-41.75, CANNER AND LOW CUTTER 1-2 30.75-36.00, SHELLS DOWN TO 24.00.
BULLS: YG#1 1145-2030 LBS. 48.00-51.75, ONE 55.75, FEW YG#2 895-1860 LBS. 42.00-46.75.
FEEDER CATTLE: STEERS MED. AND LRGE 1 350-550 LBS. 75.00-90.00, 625-785 LBS. 67.50-80.00, 800-960 LBS. 61.00-72.00, LARGE 2 370-475 LBS. HOLSTEINS 58.00-72.00, 635-850 LBS. 52.00-60.00; HEIFERS MED. AND LRGE 1 300-540 LBS. 66.00-78.00, 640-950 LBS. 57.50-66.50, MED. 2 300-700 LBS. 58.00-67.00, LARGE FRAME 2 315-375 LBS. HOLSTEINS 48.00-53.00, 650-875 LBS. 44.50-55.00; BULLS MED. 1 200-350 LBS. 80.00-95.00, 410-535 LBS. 67.00-79.50, 675-1090 LBS. 53.00-65.50, MED. AND LRGE 2 375-505 LBS. 52.50-65.00.
CALVES: 354...VEALERS STANDARD AND GOOD 80-105 LBS. 29.00-39.00, UTILITY 60-80 LBS.

11.00-24.00.
FARM CALVES: HOLSTEIN BULLS STEADY TO 5.00 HIGHER, HEIFERS 8.00-10.00 HIGHER...#1 HOLSTEIN BULLS 85-125 LBS. 90.00-131.00 MOSTLY 100.00-126.00, #2 80-120 LBS. 30.00-85.00, #1 HOLSTEIN HEIFERS 90-125 LBS. 112.50-165.00, #2 70-90 LBS. 37.50-85.00.
BEEF TYPE BULLS AND HEIFERS 60-115 LBS. 60.00-110.00.
HOGS: 30...BARROWS AND GILTS FEW US#1-3 220-265 LBS. 33.50-36.50, FEW US#2-3 300-385 LBS. 32.00-37.00.
SOWS: US#1-3 395-495 LBS. 24.00-29.00, 510-600 LBS. 28.00-30.50, MED. 300-415 LBS. 13.00-21.50.
BOARS: FEW 390-690 LBS. 15.50-18.00.
FEEDER PIGS: NO MARKET TEST.
SHEEP: 38...SLAUGHTER LAMBS STEADY. SLAUGHTER LAMBS CHOICE 35-65 LBS. 95.00-105.00, 70-85 LBS. 87.00-95.00.
OLD CROP LAMBS: FEW CHOICE 105-115 LBS. 51.00-55.00.
SLAUGHTER SHEEP: 24.00-39.00, YEARLINGS 41.00-46.00.
GOATS: 87...BY THE HEAD, MED. AND LARGE WETHERS 45.00-80.00, LARGE BILLIES 81.00-170.00, MED. 42.00-77.50, FEW LARGE NANNIES 35.00-65.00, MED. 32.50-71.00, LARGE KIDS 20.00-45.00, SMALL 11.00-22.50 HEAD.

TY 38.00-42.00; HIGH DRESSING 42.50-44.00; CANNERS 33.00-38.00; SHELLY 33.00 DOWN.
BULLS: 2 HEAD. NO HEAVY-WEIGHTS OFFERED. 900-1100 LBS. 48.00-51.00.
FED STEERS: 5 HEAD. 2 CHOICE HOLSTEINS 1700-1835 LBS. 52.25; LOW CHOICE HOLSTEINS 1600-1700 LBS. 49.75-51.50.
VEAL CALVES: 156 HEAD. CULLS 85-110 LBS. 25.00-32.00; 60-85 LBS. 19.00-29.00.
FARM CALVES: HOLSTEIN BULLS, ACTIVE BIDDING! #1 95-120 LBS. 97.00-127.00; FEW 85-95 LBS. 80.00-107.00; 125-135 LBS. 84.00-100.00; #2 95-120 LBS. 70.00-95.00; 80-95 LBS. 45.00-70.00; HOLSTEIN HEIFERS #1 95-120 LBS. 120.00-147.00; #2 90-120 LBS. 85.00-115.00; BEEF X BULLS 85.00-110.00; HEIFERS TO 67.00.
BUTCHER HOGS: 49 HEAD, 1.00 HIGHER. US#1-2 230-270 LBS. 37.00-37.50; #1&3 235-275 LBS. 35.00-36.75.
SOWS: 1 675 LB. AT 27.00.
STOCK CATTLE: STEERS, NONE. HEIFERS: SM. TO MED. FRAME 300-500 LBS. 58.00-71.00; 500-700 LBS. 55.00-60.00.
BULLS: 300-500 LBS. LARGE FRAME 72.00-77.00; 300-600 LBS. SM. TO MED. FRAME 62.00-64.00; HOL 600 LBS. 48.00-51.00.
SHEEP: 20.00-35.00; 1 LAMB 145 LBS. AT 60.00.
GOATS: MED. 50.00-60.00; SMALL FLESHY 30.00-37.00.
PIGS AND SHOATS: BY THE LB. 80-105 LBS. 40.00-44.00.

Greencastle Livestock

Greencastle, Pa.
May 4, 1998
CATTLE 521...PDA...SUPPLY INCLUDED 254 SLAUGHTER STEERS AND HEIFERS, 173 SL. COWS, 19 BULLS AND 75 FEEDER CATTLE COMPARED TO LAST MON.'S SALE, SL. STEERS 1.50-2.00 HIGHER, BULLS UNEVENLY STEADY.
SLAUGHTER STEERS: HIGH

Frederick Livestock Auction

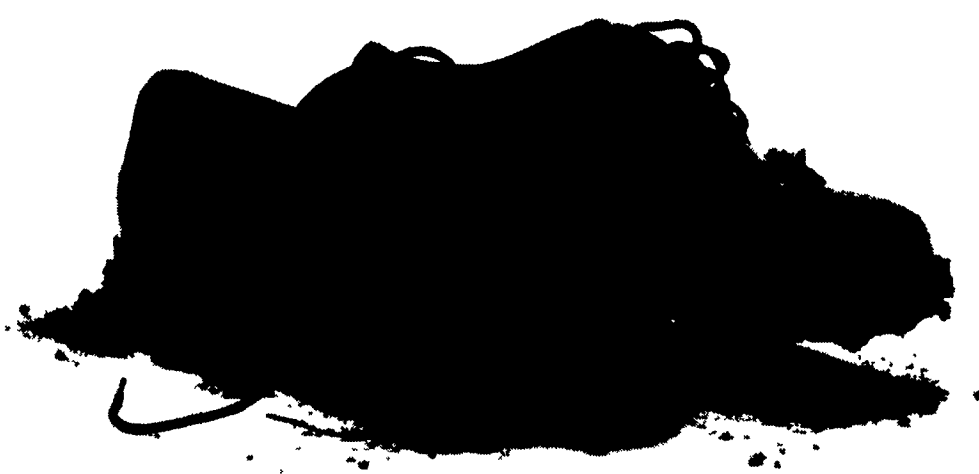
Frederick, Md.
May 4, 1998
Report Supplied by Auction
SLAUGHTER COWS: 90 HEAD, STEADY, SPOTS 1.00 LOWER. UTILI-

Forney Longenecker
Vice President/Financial Consultant
Commodities Only
SMITH BARNEY 717-295-8914 • 800-441-1997
A Member of TravelersGroup
SMITH BARNEY INC.
29 East King Street
Suite 200
Lancaster, PA 17602-2852

PARS, INC.
(POSITIVE APPROACH FOR REVITALIZING SOILS)
805 MILTON GROVE ROAD SOUTH • ELIZABETHTOWN PA 17022 9648
DISTRIBUTORS OF: **Agri-SC** soil treatment
SEEDS
NA-CHURS Liquid Fertilizer
Call our office for the salesman nearest you.
1-800-929-2676
Dealer Inquiries Welcome

DISTRIBUTORS FOR: SILO QUEEN
North Coast Seed Corn
• 475 • 2090 - 97 Day • 2518
• 502 - 109 Day
• 2400 - 110 Day
• 2525 - 117 Day
SOYBEANS
Boydell Farms #363
#3500 (2nd Place BACS Trials)
North Coast
354.284
The All New Roundup Ready 2830
Also Avail. Resnick General.
• Fertilizers ALFALFA
• Chemicals • Vernal
• Lawn-Garden • 94 MPR
Seeds • Premium Blend
• Full Line of Ag Seeds **BALER TWINE**
WHOLESALE & RETAIL
BOYDELL FARMS
302 Iona Road, Lebanon, PA 17042
Phone: 717-272-8943

Out standing in your field.



The Agri-specialists from Farmers First aren't a bunch of deskbound bankers waiting around for the phone to ring. We get involved with you. Right where you live and work. We lend the money farmers need to keep growing. And, we can help your business in a lot of other ways, too. We talk the talk. And we walk the walk. (wherever that might lead us)



ANDY TERRELL
(717) 626-4735
EXT. 264

The Agri-specialists
FARMERS FIRST BANK
A SUSQUEHANNA BANC Member FDIC



JAY HERSHEY
(717) 768-8256

Paul B. ZIMMERMAN INC.
Heavy Duty Headlocks
Finished with TGIC Polyester Powder Coating.. Superior to Epoxy!

3 Sizes Available To Meet Your Cattle Handling Needs
• CA Series: 7 locks per 10'
• HE Series: 6 locks per 10'
• CO Series: 4 or 5 locks per 10'
• Extra Heavy Construction
• yokes lock on individual catches
• Yoke stabilizer on large sizes
• Designed for easy entry & exit
• Removable neck bar


LAPP'S BARN EQUIPMENT
5935 OLD PHILADELPHIA PIKE, GAP, PA 17527
PHONE: 717-442-8134 • FAX 717-442-3112
SALES & SERVICE
Call or write for free catalog.