

35 TRUCKS & TRAILERS

1990 Mack, CH613, 224" WB, 42" standup sleeper, elite interior, air ride cab, REMACK E7 400 150K mi., Eng. brake, rebuilt RTX14609B, Mack 4000 # air ride suspension 3.65 ratio, 11R22.5 alum. front, steel rear, air slider, A/C, RED. \$27,000

1992 Freightliner, FLD11264ST, 212" WB, 48" air ride sleeper cab full fairings, 350 CAT 170K mi on rebuild, Jake brake, RTX12609B, 40,000 # air ride suspension, Eaton 4.11 ratio rears, L/P 24.5 alum front, steel rear, air slider, P/S, A/C, Tilt/Tele, blue. \$19,500

(4) 1980 STRICK dry van, exterior post, 48"x96"x13'6", swing doors, LP 24.5 spokes, no slider. \$1600 - \$2200 (sale or rent)

1982 GREAT-DANE reefer 45"x96"x13'4", Carrier Eagle, swing doors, side door, slider, LP 24.5, steel budds. \$3500

Misc. Parts & Equipment

1982 Carrier Eagle Reefer unit, Kubota diesel, \$750

Transmission RT14609A, 9spd, excellent, \$500

Mack R Model Bumper, chromed, new take off, \$200

Mack rear axle housing, no cracks.

Dock plate leveler, mechanical, 7'x6'-16" lip, requires a 23" pit, \$100

Weekdays 717/362-8117

Nights & Weekends 717/362-3678

Ask for Steve



1999 FORD HEAVY DUTY PICKUPS

In Stock - Ready To Sell

4x4 & 4x2

- Hard To Get -

We Have Them

6-In Stock, More Coming

1996 FORD F250

4x2, 37,350 Miles, I6 with

5-Speed, #P3513

WORK TRUCK

PRICED TO SELL AT

\$14,399

1996 FORD F150 SUPERCAB

Eddie Bauer, 4x4, Only

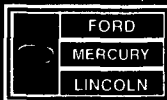
24,000 Miles, V8, AT, A/C,

Loaded #PF3450

Was

\$22,999 NOW \$21,495

Unless the Chapman Emblem is on Your Car or Truck, You Probably Paid Too Much!



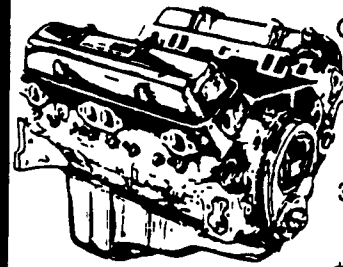
LEBANON



20th & CUMBERLAND STS. - RT. 422 WEST

9-9 DAILY 9-5 SATURDAY • SHEEHY HOTLINE (717) 272-7671 OR 513-5293

JONES Goodwrench ENGINE HEADQUARTERS



GM GOODWRENCH

350 V8 1973-85

Part Number

10067353

New Engine - Not

Rebuilt

36 Month or 50,000

Mile

Warranty

\$1199⁰⁰

New Engine - No Core Fee

WE'LL MATCH ANY COMPETITOR'S PRICE!

6.5L GOODWRENCH DIESELS From \$3,175

Call 394-0711 for prices on other New or Remanufactured Goodwrench Engines. 2.5 Liter thru 454 cid. Gas and Diesel

Chevrolet - Pontiac - Olds - Buick - Cadillac - GMC

JONES GM PARTS CENTER

1335 Manheim Pike, Lancaster, PA 17604

Easily Located on Rt. 72 Just off of Rts. 283 & 30

Hours: Mon-Fri 7:30 a.m. - 9 p.m. Sat 7:30-3

(717) 394-0711



SHIRN'S GMC & ISUZU TRUCKS

1804 Lycoming Creek Road, Rt. 15, Williamsport, PA 17701

Bus: (717) 326-1581, Ext. 35, 36 & 37 **(800) 343-7456**



1992 Volvo, L 10 Cummins 9 spd 190 000 Miles Good Dump or Grain Truck Chassis



1992-1994 GMC C&C Van Flats Dump Call for Details



New 1987 GMC Tandem Axle Dump: 275 HP 10-Spd 56 000# GVW Call For Details



NEW GMC 8000 & 7000 Models in Stock; (Various Specs) 25 950# GVW To 33 000# GVW



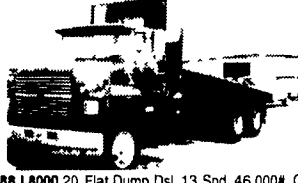
1987 GMC Brigadier, 6V71, 9-Spd, New 10' Box, ALL TRUCK



1992 GMC Del 250 HP 6 Spd New 16 Grain Body



1990 F700 16 Flat Dump Dsl 5+2



1988 L8000 20 Flat Dump Dsl 13 Spd 46 000# GVW

WE CAN INSTALL GRAIN SIDES

JONES BEST BUY 4X4'S TRUCKS

Largest Stocking & Selling Extended Cab GMC Dealer in 7 States

PONTIAC • HONDA GMC TRUCK

1335 Manheim Pike, Lancaster

Prices based on straight sale, Tax & Tags extra. Trades accepted at actual cash value. Must present this ad at time of purchase for sale price.

JONES 717-394-0711



'93 DODGE DAKOTA XCAB

4x4, AT, V8, AC, LE, Black #7910 Was \$15,888

SALE \$13,700



'95 GMC C25 SUBURBAN

Diesel, 6.5 Turbo, AT, AC, SLE, #7870, Was \$26,400

SALE \$23,750



'94 FORD F150 4X4

AT, AC, 4.9L, Clean #7869, Was \$11,400

SALE \$9,750



'95 CHEV K25 XCAB 4X4

8600 GVW, Silverado, AT, AC 350 #7793, Was \$19,900

SALE \$17,400



'97 GMC XCAB 4x4

5 Spd, AC, SL, Vortec, 4300 Engine #7911 Was \$19,975

SALE \$17,985



'88 CHEV K15

4x4, Scottsdale, 350, AT, AC #7881, Was \$8,950

SALE \$6,840



'90 GMC K JIMMY

350, AT, AC, SLX #7867, Was \$9,900

SALE \$7,800



'93 GMC CONVERSION VAN

AT, AC, V6, TV, VCR, T, Low Miles, #7895, Was \$14,888

SALE \$12,488



'91 FORD RANGER 4X4

Auto, AC, V6 #7862, Was \$9,000

SALE \$7,850



'97 GMC 14' CUBE VAN

AT, AC, Ramp, Nice Shape #7889, Was \$24,800

SALE \$19,877



'95 CHEVY K35 4X4 DIESEL

AT, 6.5 Turbo, Silverado, AC, Dually #7902 Was \$25,775

SALE \$21,800



'94 GMC SUBURBAN 4X4

Starcraft Conv, AT, AC, V8, 40K Miles #7786 Was \$26,500

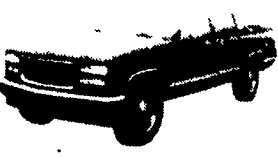
SALE \$22,800



'93 GMC K25 XCAB 4X4

AT, AC, 350, 8' Bed #7822, Was \$15,900

SALE \$12,550



'96 GMC SUBURBAN 4x4

AT, AC, SLE, 350, Clean #7900 Was \$28,400

SALE \$25,800



'95 DODGE CARAVAN

Sport, AT, AC, V6 #7884, Was \$9,995

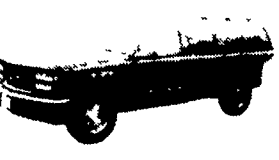
SALE \$7,985



'98 GMC CREW CAB 4x4

6.5 Turbo, SLE, 10,000 GVW, Loaded, 10K Miles, #19999, Was \$38,400

SALE \$34,480



'95 GMC SUBURBAN 4X4

AT, AC, SLT, 350 #7903 Was \$25,800

SALE \$23,750



'95 GMC JIMMY 4x4

AT, AC, V6, 2 Dr. #7888, Was \$14,800

SALE \$11,477



'91 CHEVY S10

V6, 5 Spd., AC #7851, Was \$5,900

SALE \$3,850



'94 GMC K15 4X4

AT, AC, V8 #7815 Was \$16,988

SALE \$14,200