

**For Sale**

**1993 GMC Sonoma SL5 PU**  
V6, Loaded, 51,000 Miles  
**\$5,300.00**

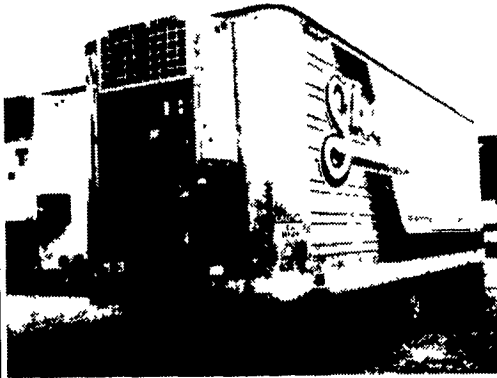
**1993 Ford F150 XL 4x4**  
AT, PS, AC, Long Bed, 51,000 Miles, V8  
**\$9,900.00**

**1995 Chevy Astro Van AWD**  
8 Passenger, AT, AC, PW, PDL, Cruise, Rear Heat, Tilt, 73,000 Miles  
**\$11,500.00**

**1994 Plymouth Voyager SE**  
Handicap Van, 10" Lowered Floor, IMS Conversion, Loaded, 41,000 Miles

**Marietta Motors Inc.**

1407 River Road, Marietta, PA 17547  
**(717) 426-4650**



**28 ft & 45 ft Reefer Trailers**  
*Bargain Time*

**Curry Supply Co., Curryville, PA**  
**1-800-345-2829**

**LESHER Mack SALES & SERVICE**

27th & Cumberland St.  
Route 422 West

Lebanon, Pa  
17042

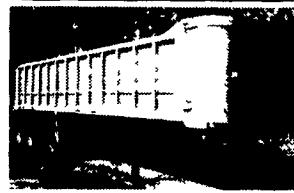
**NEED A SLEEPER OR DAYCAB?**

Sleeper boxes can be removed - plenty to choose from  
1994's - 1995's

E7-350 RTLO14610B - 10 Spds., DS404 - 3.9OR on Air, Steel Disc Hub Pilot, 295/75R 22.5 192 WB, 42" Highrise, 400,000 Miles



**LEASE IT!**  
1998 Isuzu NPR 14 Ft. Supreme Van Body, Call For Details  
Ask For Leasing Dept



**1995 Parker Dump**  
O.A. Length 34ft., 3-Axle Air Ride, 11R22.5, Spoke

**1974 Fruehauf Tank**  
Steel w/3 Hoppers, 11R22.5, Spoke, Spring Susp. Good Caps



**717-273-4535**

**72 White T-A Truck**  
Tractor Conv. 318  
Detroit. Good Rubber, Inspected, Good Cond. Motor is Tired.  
**\$1,200 OBO**  
**717/653-4830**

**MOTORS**

New & Rebuilt  
350, 366, 427, 454

6.2 Diesels  
Rebuilt & Used

Will Install  
Roll Back Service,  
(at cost)  
**717-762-6415**

**1987 Cobra 39'**  
aluminum dump,  
frameless on  
spread axle with  
air ride, 2-way  
tailgate, roll tarp,  
11R-24.5 tires.  
**410-275-2605**

'81 Ford 350,  
351 motor, steel 10'  
bed, 5th wheel hook-  
up & brake, nice  
**\$2600**

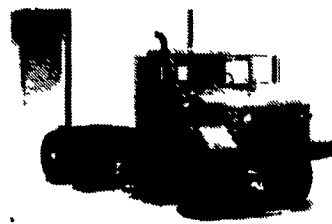
'82 Ford 350  
w/300 motor, 10'  
wooden bed,  
very nice  
**\$2600**

**814-667-2297**

**ARMY TRUCK PARTS**

CHAMBERSBURG, PA

**COMPLETE TRUCK INVENTORY**  
**COMPLETE PARTS INVENTORY**  
**THE NATION'S LARGEST ARMY TRUCK AND PARTS DEALER**



**6x6 TRUCKS**  
**2 1/2 & 5 TON**  
**UNITS AVAILABLE**  
**ENGINES**  
**TRANSMISSIONS**  
**TRANSFER CASES**  
**DRIVE TRAIN**  
**CAB KITS**

Army truck parts catalogs available

**MEMPHIS EQUIPMENT**

821 Lincoln Way West  
P.O. Box M  
Chambersburg, PA 17201

**717/263-4194 FAX 717/263-4555**



GLENN ALLEMAN, GEN. MGR.  
MARK SIPES, PARTS MGR.



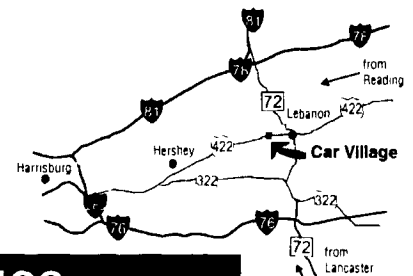
**Business Hours:**  
**Mon.-Fri. 9 to 9;**  
**Sat. 9-4**

**RTE. 422 WEST**  
**LEBANON, PA**

(Across From Lebanon Valley Mall)

**CAR VILLAGE**

**HEAVY DUTY TRUCKS**



**PHONE 717-274-2000 Toll Free 1-800-650-1420**



**4x4 CLUB CAB DUALLY**  
**95 DODGE**  
Black Beauty is Here, Cummins Turbo Diesel, AT, A/C, 4:10 Gears, Tow Pkg, Chrome, Simulators, 32,000 Miles



**QUAD CAB - 4 DOOR, 98 DODGE 3500 4X4**  
Almost New, Only 700 Miles, Cummins Turbo Diesel, 5 Spd., AC, 4:10 Limited Slip Axle, Great Tow Machine



**5 SPD DUALLY**  
**97 DODGE 3500 SLT LARAMIE**  
Awesome Tow Machine, Cummins Turbo Diesel, 5 Spd., AC, Tilt, Cruise, Heavy Duty Frt & Rear Dana Axles, 4:10 Gear, New Truck Warranty



**94 DODGE 3/4 TON 4X4**  
Heavy Duty 8800 GVW, Cummins Turbo Diesel AT, A/C, Tow Pkg, 40,000 Miles, Remaining New Tk Warranty \$19,900



**PERFECT 92 DODGE 250 2 WHEEL DR**  
You Must See This One Looks New Only 37,000 Original Miles, Cummins Turbo Diesel AT, A/C, Perfect Body



**97 DODGE 2500 HEAVY DUTY PICKUP**  
A Real Looker, All New TK Warranties, Only 22,000 Miles, Cummins H D 5spd L.S 4 10 Gears, Tow Pkg.



**5 Sp Cummins 90 DODGE HEAVY DUTY,**  
3/4 Ton, Power to pull Cummins Turbo Diesel 5 sp., A/C, Gooseneck Hitch Give It A Try



**4X4 CLUB CAB 93 DODGE 250 LE**  
Nice Tk - Only 65,000 miles, Cummins - Auto, A/C, Tow Pkg. Real Clean



**4X4 DODGE CLUB CABS**  
Cummins Turbo Diesel 97 - Auto - 31,000 miles 95 - 5sp - 49,000 miles New Tk Warranty, very nice



**SUPER DUTY CHASSIS 94 FORD SUPER DUTY**  
Big 15,000 GVW, Turbo, 7.3 Diesel 5sp, A/C, Dual Tanks, Long 161 W B



**2-WHEEL DRIVE 96 CHEVY CREW CAB DUALLY**  
Perfect, Like New, Only 11,000 Miles, High Output, 6.5 Turbo Diesel, Auto, AC, Tilt, Cruise, 4 10 Limited Slip Gear, Nice Tow Machine



**5SPD POWERSTROKE 97 FORD F250 SUPER CAB**  
4 Wheel Drive, Great Tow Machine, Like New, Only 23,000 Miles, Tow Pkg., Aluminum Wheels



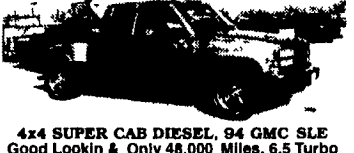
**WESTERN HAULER**  
**94 CHEVY CREW CAB DUALLY**  
Only 58,000 Original Miles, Strong 454 f i V8, Auto, A/C, Gooseneck Hitch, This Truck Will Tow Big Loads \$17,900



**4 Wheel Drive**  
**94 CHEVY 4 DOOR DUALLY**  
Excellent Tow Machine 5sp, High Output 6.5 Turbo Diesel 4 10 gears, Gooseneck Hitch, Only 40,000 Miles, New Tk Warranty



**AFFORDABLE 4X4 DIESEL SUPER CAB**  
**90 FORD F250**  
Heavy Duty, 7.3 Diesel 5spd A/C



**4x4 SUPER CAB DIESEL, 94 GMC SLE**  
Good Lookin & Only 48,000 Miles, 6.5 Turbo Diesel, AT, A/C, Capt Chairs, Console, Aluminum Wheels, Remaining Factory Warranty \$18,900



**4X4 UTILITY 95 FORD F350 XL**  
460 V8 Auto, 9ft body, Ladder Racks, will sell as Chassis



**1 TON DIESEL 4x4 - 2 Available**  
97's Powerstroke Turbo Diesel, AT, A/C, Tow Pkg, Aluminum Wheels



**4 DOOR F250 4X4**  
**WE HAVE (3)**  
97 Powerstroke, AT, 13,000 Miles 96 Powerstroke, AT 32,000 Miles



**4-Door Crew Cab, 94 CHEVY** Room for the Family or Work Crew, Local 1 Owner Trade, Only 50,000 Miles, 6.5 Turbo Diesel, AT, A/C, Silverado Pkg, Beautiful



**12 FOOT BOX TRUCK**  
**88 FORD F350**  
Very Nice, Very Clean, Only 33,000 Original Miles, V8, Auto, Runs & Drives Great, Will Sell As Chassis



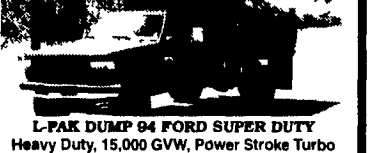
**4X4 Diesel 92 FORD F250**  
Heavy Duty 3/4 Ton Runs Good, Looks Good, 7.3 Diesel, AT, A/C, Only 56,000 Miles Work Style Interior



**Work Van,**  
**95 FORD E250 Super Cargo Van**  
Nice & Clean, 47,000 Miles, Heavy-Duty 3/4 Ton V8, Auto, A/C, Rear Glass Only



**Looking For This? Like New 12 Ft. Rack Body Dump With Hoist \$3500**



**L-PAK DUMP 94 FORD SUPER DUTY**  
Heavy Duty, 15,000 GVW, Power Stroke Turbo Diesel, 5spd, Only 32,000 Miles, Will Sell as Chassis