

# Kirkwood Ag Auction

**Produce**  
Kirkwood, PA  
May 6  
10:00 A.M.

Report Supplied by Auction  
ASPARAGUS: .50-1.20 BUNCH.  
RADISHES: 2.00-3.00 BOX.  
RHUBARB: 4.50-5.50 BOX.  
SPINACH: 2.00 BOX.  
STRAWBERRIES: 13.50 8 QT. FLAT.  
VEGETABLE PLANTS: COLE  
PLANTS .50-2.50 FLAT; TOMATOES  
2.00-8.00 FLAT; TOMATOES, SM. POT  
1.25-3.00, LARGE 3.00-4.00 EACH.  
HERBS: .30-1.00 POT.  
FLOWERS: ANNUALS 5.00-8.00  
FLAT, POTTED .10-.50 EA.; GERA-  
NIUMS 1.10-5.50 POT; PERENNIALS  
SM. POT 2.50-3.00 EA., LARGE  
3.00-3.50 POT, 3.50-7.50 FLAT.  
HANGING BASKETS: BLEEDING  
HEART 5.00; ASSORTED 4.00-8.00  
EACH.  
NURSERY STOCK: AZALEAS  
3.50-4.50 EA.

## Oklahoma City Feeder Cattle

Oklahoma City, OK  
Wed May 6, 1998

USDA-OK Dept Ag Market News  
Oklahoma National Stockyards - Week-  
ly Cattle Summary

Compared to last week: Feeder steers  
steady to 1.00 higher. Feeder heifers steady  
to 1.00 lower. Demand good for feeder  
cattle despite some increase in flesh. Mark-  
et improved throughout the day with  
strength noted midsession thru close. Light  
supply stocker cattle and calves steady  
with good demand. Quality of feeder supply  
improved from last week with decline in  
Brahman cross and increase in English and  
exotic crosses. Flesh condition medium to  
fleshy with bulk supply feeders medium  
plus to moderately fleshy. Weigh condi-  
tions mostly average. Slaughter cows  
steady to 1.00 lower, decline on Breakers.  
Slaughter bulls steady. Packer demand  
very good with all areas participating. This  
the first week in many months that upper  
midwest packers were firmly in the market.  
Total of 550 cows and bulls sold with 50  
percent to packers. Receipts this week  
15,250; last week 11,337; last year 12,847.  
Supply consisted of 85 percent yearlings  
over 600 lbs; 11 percent calves under 600  
lbs; 4 percent cows and bulls of which half  
went to packers. Prices follow with weight-  
ed average weight and price in parenthesis.

Feeder Steers: Medium and Large 1  
300-400 lbs (350 lbs) 105.50-112.50  
(108.65); 400-500 lbs (450 lbs)  
101.50-110.50 (105.60); 500-600 lbs (550  
lbs) 88.00-96.00, pkg thin 98.50 (92.56),  
few new crop calves 80.00-90.00; 600-650  
lbs (636 lbs) 84.50-88.75 (87.78); 650-700

lb stockers (672 lbs) 82.75-88.25 (86.23);  
700-730 lb stockers (716 lbs) 78.25-84.00  
(81.95); 650-700 lb feeders (685 lbs)  
77.50-83.75 (80.24); 700-750 lbs (735 lbs)  
74.25-80.75 (76.40); 750-800 lbs (777 lbs)  
73.50-76.50 (74.78); 800-850 lbs (821 lbs)  
71.50-76.75 (73.78); 850-900 lbs (865 lbs)  
70.25-74.00 (71.84); 900-950 lbs (926 lbs)  
67.75-71.00 (69.68); 950-1000 lbs (976  
lbs) 66.50-68.75 (67.58); few 1000-1025  
lbs (1012 lbs) 67.25-68.25 (67.39).

Feeder Heifers: Medium and Large 1  
350-400 lbs (379 lbs) 84.50-94.00 (90.33);  
400-500 lbs (450 lbs) 86.50-90.00, few  
fleshy 79.00-87.00 (86.56); 500-550 lbs  
(523 lbs) 79.50-85.00 (82.70); 550-600 lbs  
(579 lbs) 77.25-81.00 (78.49); 600-650 lbs  
(627 lbs) 73.50-77.00 (75.88); 650-700 lbs  
(669 lbs) 72.00-75.25 (73.81); 700-750 lbs  
(722 lbs) 70.25-73.50 (71.87); 750-800 lbs  
(770 lbs) 68.25-72.25 (69.75); 700-800 lb  
fleshy 66.50-71.00 (68.79); 800-850 lbs  
(821 lbs) 66.25-70.00 (68.62), fleshy  
65.00-66.50 (65.87).

Slaughter Cows: Average dressing: Cut-  
ters 34.00-36.75, Utilities 36.00-39.50;  
high dressing: Cutters 36.00-39.00, Utili-  
ties 38.50-41.50; low dressing: Cutters  
31.00-33.75, Utilities 33.00-36.00. Can-  
ners 27.00-31.00.

Estimated dressed cost at Oklahoma  
National Stockyards: Cutters 75.85; Bon-  
ers 75.15; Breakers 71.25, Y.G. 4-5 66.30;  
Canners 71.55. Bulls 87.20.

Slaughter Bulls: Yield Grade 1  
1300-2050 lbs average dressing  
48.00-50.00; high dressing 49.50-52.50,  
high dressing/high boning 52.00-55.50;  
low dressing 44.00-45.50.

Replacement Cows: Pretested for  
Bangs, pregnancy, and age Medium and  
Large 1 4-6 yr old 925-1175 lbs 5-8 mo  
bred avg quality 520.00-580.00, 2-3 mo  
bred avg quality 410.00-465.00.

Pairs: Medium and Large 1 Average  
quality : 5-7 yr old 850-1175 lb English  
cows bred back 2-4 months with 250-300  
lb calves 630.00-700.00. 3-7 yr old  
800-1200 lb cows with 100-300 lb calves  
600.00-660.00. 7-8 yr old 800-1000 lb  
cows with 150-200 lb calves  
590.00-600.00.

## Carlisle Livestock

Carlisle, Pa.  
May 5, 1998

SLAUGHTER CATTLE: STEERS  
CHOICE 1050-1450 LBS. 63.75-67.50,  
SELECT 900-1450 LBS. 62.50-64.75;  
HOLSTEINS CHOICE 1500-1700 LBS.  
61.75-65.50, SELECT 1500-1750 LBS.  
50.75-60.75; HEIFERS CHOICE  
60.75-65.00, SELECT 58.75-60.00;  
COWS, ACTIVE/ BREAKING UTILITY  
AND COMMERCIAL 39.00-47.00, CUT-  
TER AND BONING UTILITY  
35.00-42.00, CANNER AND LOW CUT-

TER 30.00-38.00, MOSTLY 30.00-36.00,  
SHELLY 29.00 AND DOWN; BULLS,  
HOLSTEINS 1360-2625 LBS.  
48.00-48.25.

FEEDER CATTLE: STEERS 650-900  
LBS. 67.00-76.00; HEIFERS 400-650  
LBS. 60.00-73.00, HOLSTEINS 400-600  
LBS. 60.00-67.00; BULLS, HOLSTEINS,  
DAIRY TYPES 500-850 LBS.  
46.00-50.00; CALVES, VEALERS,  
GOOD! 200-260 LBS. 76.00-81.00,  
RETURNING TO FARM, STRONG  
DEMAND! HOLSTEIN BULLS #1  
95-125 LBS. 110.00-125.00, #2 130-160  
LBS. 80.00-100.00; HOLSTEIN HEIFERS  
#1 80-120 LBS. 100.00-130.00; BEEF X  
BULLS TO 95.00.

SWINE: HOGS US#1-3 ACTIVE!  
220-270 LBS. 38.50-39.00, 290-340 LBS.  
33.00-36.75; BOARS ALL WEIGHTS  
16.50-21.00; SOWS US#1-3 300-650 LBS.  
24.00-32.00; THIN, WEAK, ROUGH TO  
23.00; FEEDER PIGS BY THE HEAD,  
ACTIVE! 16-25 LBS. 13.00-27.00, 30-45  
LBS. 33.00-41.00, 50-60 LBS.  
43.00-44.00.

GOATS: BY THE HEAD, MED. TO  
LRGE. NANNIES AND BILLIES  
47.50-110.00; FLESHY KIDS  
36.00-55.00; SMALL/THIN KIDS  
12.00-47.50.

LAMBS: GOOD 60-130 LBS.  
73.00-95.00.

SHEEP: ALL WEIGHTS 38.00-67.50.  
SALE EVERY TUES. 5 P.M. FOR  
RABBITS, POULTRY AND EGGS, 6:30  
P.M. FOR LIVESTOCK, STARTING  
WITH CALVES.

NEXT FED AND FEEDER CATTLE  
TUES., MAY 19.

STATE GRADED FEEDER PIG  
SALES FRIDAY, MAY 22. RECEIVING  
FROM 6:30 A.M. TO 10:30 A.M. SALE  
STARTS AT 1 P.M. PEN LOTS OF  
CATTLE SOLD IN ORDER RECEIVED.  
EARLYBIRD PENS CLOSE TUES. 2  
P.M.

## Four States Livestock

Hagerstown, Md  
May 6, 1998

Report supplied by Auction

SLAUGHTER COWS: 79 HEAD,  
PRICES STEADY. UTILITY 38.00-42.00;  
HIGH DRESSING 42.00-43.75; CAN-  
NERS 34.00-38.00; SHELLY 34.00  
DOWN.

BULLS: 7 HEAD 1100-1200 LBS.  
YG#1 49.50-51.25; YG#2 43.75-48.00.

FED STEERS: 98 HEAD STEADY TO  
1.00 HIGHER. HIGH CHOICE AND  
PRIME 1100-1450 LBS. 66.00-68.75,  
1450-1600 LBS. 61.50-62.50; CHOICE  
1200-1450 LBS. 63.00-66.00; LOW  
CHOICE 60.00-63.00; SELECT  
57.00-61.00.

FED HEIFERS: FEW HIGH CHOICE  
1100-1200 LBS. 65.00-67.00; LOW  
CHOICE HOLSTEINS TO 48.25.

VEAL CALVES: 96 HEAD. CULLS  
85-110 LBS. 29.00-36.00; 60-85 LBS.  
20.00-29.00.

FARM CALVES: HOLSTEIN BULLS  
#1 95-120 LBS. 100.00-130.00, 85-95  
LBS. 75.00-107.00; WEAKER CALVES  
40.00-75.00; HOLSTEIN HEIFERS, FEW  
OFFERED; BEEF X BULLS AND HEIF-  
ERS 60.00-102.00.

BUTCHER HOGS: US#1-2 230-260  
LBS. TO 38.25.

STOCK CATTLE: 227 HEAD.  
STEERS MED. AND LRGE. FRAME:  
200-400 LBS. 83.00-102.00; 400-600 LBS.  
76.00-88.00; 600-800 LBS. 65.00-77.00; 4  
HOLSTEINS 550 LBS. AT 63.00.

HEIFERS: MED. AND LRGE. FRAME  
300-500 LBS. 70.00-83.00; 500-700 LBS.  
62.00-73.00, FEW TO 78.00; 700-900  
LBS. 52.00-59.00.

BULLS: MED. AND LARGE FRAME  
200-400 LBS. 75.00-88.00; 400-600 LBS.  
66.00-80.00; 600-800 LBS. 53.00-67.00;  
800-900 LBS. TO 51.50.

DAIRY REPLACEMENTS: LARGE  
FRESH AND SPRINGING  
850.00-1025.00; MED. 550.00-800.00;  
MED. OPEN HEIFERS 240.00-350.00; 2  
HEAD SMALL 230 LBS. AT 98.00 PER  
HUNDRED.

SHEEP: 33.00-36.00.

LAMBS: CHOICE 90-100 LBS.  
84.00-86.00.

GOATS: LARGE 70.00-88.00; SMALL  
23.00-26.00.

PIGS AND SHOATS: BY THE LB. 16  
HEAD 88-105 LBS. 54.00-61.00.

NEXT SPECIAL DAIRY CATTLE  
CONSIGNMENT SALE WED., MAY 20,  
7:15 P.M.

## New Holland Sales Stables

Monday, May 4, 1998

Calves Sheep Goats

Today 211 864 1076

Last Week 142 894 768

CALVES: COMPARED TO THURS-  
DAY'S AUCTION, A SMALL SUPPLY  
OF VEAL CALVES SOLD SHARPLY  
HIGHER. SLAUGHTER CALVES  
WERE MOSTLY 5.00 LOWER. HOLS-  
TEIN BULLS AND HEIFERS RETURN-  
ING TO FEED SOLD 5.00-20.00  
LOWER.

VEALERS: FEW GOOD AND  
CHOICE 75-95 LBS. 35.00-60.00. FEW  
STANDARD AND LOW GOOD 60-85  
LBS. 15.00-20.00.

SLAUGHTER CALVES: GOOD AND  
CHOICE 200-350 LBS. 95.00-105.00;  
350-600 LBS. 65.00-80.00. UTILITY  
AND GOOD 200-350 LBS. 85.00-95.00;  
350-600 LBS. 50.00-65.00.

RETURNED TO FARM: HOLSTEIN  
BULLS 95-125 LBS. 100.00-120.00.  
PLAINER CALVES 90-120 LBS.  
60.00-100.00. HOLSTEIN HEIFERS  
90-120 LBS. 105.00-130.00. FEW PLAIN-  
ER CALVES 80-100 LBS. 80.00-105.00.

SHEEP: COMPARED TO THURS.'S  
AUCTION, OLD CROP SLAUGHTER  
LAMBS WERE ONLY LIGHTLY  
TESTED. SPRING LAMB PRICES  
WERE MOSTLY STEADY. SLAUGH-  
TER EWES SOLD STEADY TO 5.00  
HIGHER.

NEW CROP LAMBS: CHOICE 2-3  
25-60 LBS. 100.00-125.00, FEW PLAIN  
75.00-100.00; 60-90 LBS. 95.00-105.00;  
90-100 LBS. 90.00-100.00.

SLAUGHTER EWES: GOOD AND  
CHOICE YEARLINGS AND 2 YEAR-  
OLDS 40.00-60.00; UTILITY AND  
GOOD 1-3 30.00-45.00. AGED BUCKS  
200-300 LBS. 35.00-40.00.

GOATS: BY THE HEAD, LARGE  
BILLIES 100.00-140.00, FEW TO 160.00,  
MED. 75.00-100.00; GOOD AND  
CHOICE MUTTON 75.00-100.00;  
LARGE NANNIES 60.00-90.00, MED.  
35.00-60.00; CHOICE YEARLINGS  
70.00-90.00, GOOD 50.00-70.00; GOOD  
AND CHOICE KIDS 40.00-65.00, UTILI-  
TY 20.00-40.00.

## North Jersey Livestock

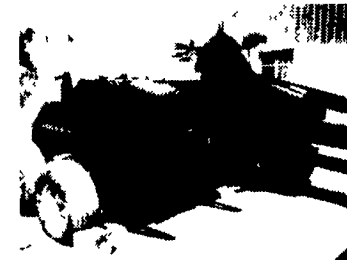
Hackettstown, NJ

Report Supplied by Auction

Tuesday, May 5, 1998

CALVES .10-1.22% .  
COWS .22% -.43% .  
EASY COWS .21-36% .  
FEEDERS 300-600 LBS. .28-.91.  
HEIFERS .25% -.60.  
BULLS .25-.63.  
STEERS .30-.75.  
HOGS .12-.44.  
ROASTING PIGS 12.00-31.00 EA.  
BOARS .10-18.  
SHEEP .18.  
LAMBS EACH 15.00-81.00.  
LAMBS PER LB. .31-1.55.  
GOATS EACH 42.00-145.00.  
KIDS EACH 10.00-97.50.  
HIDES EACH 4.00.  
TOTAL 892.

## FORAGE EQUIPMENT



NH 900 Chopper w/kernal  
processor, good cond.  
\$17,500

John Deere & NH harvesters w/kernal processors! Rolling  
your corn silage is the way to go. More milk with no more  
kernals in cow gutter or barn yard!

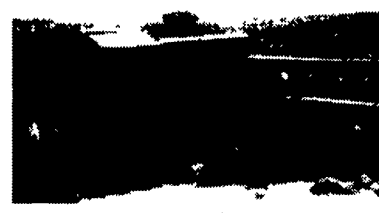
Lanc. Silo Roller Mill Blower  
(like new) SPECIAL \$17,500  
NH 892 w/kernal processor, exc  
cond \$12,800  
NH 892 w/kernal processor, elect  
controls \$11,900  
JD 3950 w/kernal processor, electric  
controls, exc cond \$17,500

Without Kernal Processors  
JD 3970, elec control, hydro swing,  
good condition \$8,500  
JD 3940, manual controls, very nice  
\$4,900

NH 892, manual control **SOLD** \$4,200  
NH 890, good cond \$3,200  
NH 770 harvester **SOLD** good cond  
\$1,500

Gehl 800, new knives \$2,750  
Gehl 800, new spout, good cond \$2,450  
Gehl 600 w/table, exc c **SOLD** \$2,895  
Massey Ferguson harvester w/table  
\$2,495  
Gehl 1200 CALL  
Badger harvester, nice w/corn &  
grass head \$995

Corn & Grass Heads  
(1) 3N2 JD 3 row narrow corn head,  
new belts, completely rebuilt. \$4,200  
(4) 880 W grass heads. \$300 to \$600  
(3) 880 N2 corn heads. \$400 to \$550  
(1) 1-row Gehl corn head. \$395  
(1) 2 row Gehl corn head \$475



JD 3960 w/kernal processor,  
elect. controls, hydro. swing,  
good cond \$12,900.

CALL FOR EARLY ORDER DISCOUNTS  
ON KNIVES, HARVESTERS,  
KERNAL PROCESSORS, ETC!

**Hay Equipment**  
NH 276 baler  
w/new Kohler engine (like new)  
\$5,695

NH 311 baler  
knotters checked (exc. cond.)  
\$3,975

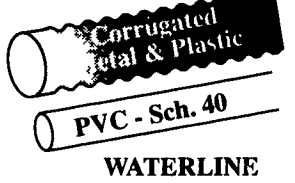
New NH 900 Chopper  
\$20,990

**MISCELLANEOUS**  
"Special on Kohler Engines"  
23 HP ..... \$1,475  
25 HP. .... \$1,340  
(1) 120 Ton Press. .... \$950  
(1) 8 Drum Oil Station. .... \$375  
(1) Electric Hoist ..... \$295

Call for current stock & pricing on all grass &  
corn heads. We are now making new  
harvest tables! We also have new & used  
harvt parts, knives, shear bars, grind  
stones, etc!

**Georgetown Hydraulics**  
610-593-2753  
(answering service)

# PERRY PIPE

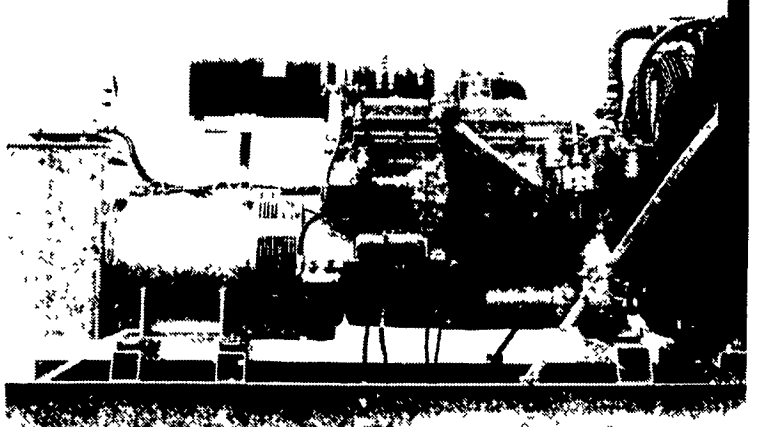


RR 2 Box 345 Elliottsburg, PA 17024

FITTINGS  
HYDRANTS  
Sewer & Drain  
SDR Pipe  
QUEST-PEX

(717) 582-2758

# GENERATORS



**MARTIN ELECTRIC PLANTS • Manufacturer of:**  
DIESEL, LP GAS, NATURAL GAS, PTO  
Automatic & Manual Start Systems  
**USED UNITS ALSO AVAILABLE**

Call Us For All Your Generator Needs!

**MARTIN ELECTRIC PLANTS**  
280 Pleasant Valley Rd., Ephrata, PA 17522-8620  
800-713-7968  
Tel: 717-733-7968 Fax: 717-733-1981

## HAY, STRAW & GRAIN SALE

Every Thursday  
at 12 NOON

**Vintage Sales Stables, Inc.**

(Rt. 30, 10 miles east  
of Lancaster  
in Paradise, PA)

For info.  
(717) 442-4181 bus.  
(610) 458-8518 home

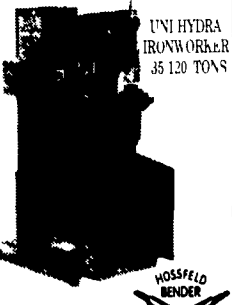
## DAVID S. KING

IRON WORKER  
Manufacturer of  
Church Bench  
folding hinges.

SCOTCHMAN BEWO  
CIRCULAR COLD SAW

CHECK Us For USED  
IRON WORKERS

Selling  
Scotchman Uni-  
Hydra and Mubea



UNI HYDRA  
IRONWORKER  
35 120 TONS  
HOSSFIELD  
BENDER  
873 South Railroad Street,  
Myerstown, PA 17067  
717-866-6556