

INT: 5088 w/cab; 3230 w/loader; 3088; 1486 w/cab; 1130 4WD w/loader; 1120 4WD w/loader & mower; (2)1086 w/Cab, 986 w/cab; 885 w/canopy; 886 w/cab; 766; 686; 684 w/loader; 685 4WD w/loader; (2) 400; 354 w/loader; (2) 300; 585 4WD w/loader; 560; 460; 186 hydro w/cab.

JD 2940; Towmotor forklift; 4600 SU w/loader; Bobcat 743 skid steer; JD 310A backhoe loader.

**Round Balers:** NH 855; 852, 853, NH 850, JD 430, Case IH 3440, Case IH 8450; (2) NI 484.

**Square Balers:** IH 430 w/thrower; JD 337 w/thrower; NH 315 w/thrower; JD 24T w/thrower

**Hay Rakes:** NH 256, NH 56; JD 640; NI

**Haybines:** NH 488; NI 5109

**Misc.:** IH 2000 loader; IH 2350 loader, Reo spreader truck; JD 4400 combine.

New Farmco Hay Wagons  
Farmco Feeders, Tedders  
Hurst Trailers

From

**LEADER'S FARM EQUIPMENT**  
Everett, PA  
**814-652-2809**  
Closed Sundays & Mondays

All Types Of Farm Equipment  
Call before you come



**VanDale 3300 Slinger**  
Rental Unit. 3 pt. Hookup

Also Lagoon Pump  
For Sale or Rent • Leasing Available

**MILLCREEK FENCE AND FARM SYSTEMS**  
2285 Old Phlla. Pike • Lanc., PA 17602  
**717-396-8987**



IH 460 gas utility tractor.....\$1,500  
Case 1830 gas skid loader.....\$4,200  
NH L553 diesel skid loader, new tires....\$7,800  
Ford CL30 skid loader, gas.....\$3,600  
Mustang diesel skid loader.....\$3,300  
Hay kicker wagon.....\$595  
JD 2010 Tractor on Steel, gas.....\$1,600  
JD 24 Skid Loader, gas.....\$3,000

**WANTED TO BUY LOADERS**  
**717-354-0266**

**USED SKID LOADERS**



**1816C Case, 43" bucket, 16hp Onan, 700 lb lift \$4,900**

- 825 Bobcat, diesel, boom hydraulics.....\$5,800
- 1994 L555 Deluxe NH, boom hydraulics, 1400 hr.....\$9,500
- 4500 Gehl.....\$3,900
- 11 HD Bradco Backhoe, fits Kubota tractor, 300 hrs.....\$5,900
- 620 Bobcat.....\$4,500
- L555 NH boom hydraulics.....\$7,500
- L445 NH.....\$4,700
- L555 NH.....\$6,500
- 170 John Deere.....\$3,200
- 722 Bobcat.....\$4,500

**Hydrostatic Transmission Rebuilding**  
Save Up To 50% on Parts - Hard To Find Parts  
**Hydraulic System Vacuum Flushing**  
Engine Parts and Service  
Kubota Perkins Ford Wisconsin Yanmar Etc. Related to Skid Loaders

Used Parts for Most Makes and Models of Skid Loaders

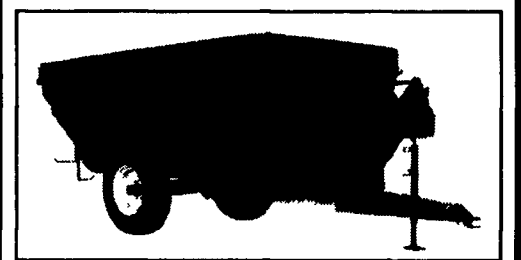
Wanted to Buy - Loaders for Salvage or Repair

**GD Equipment**  
385 W. Metzler Rd.  
Ephrata, PA 17522  
**717-859-3533**

**AG PRODUCTS COMPANY, INC.**  
234 Johnston's Lane, Mercersburg, PA 17236  
**TEL. 717-328-3177**



**KELLY RYAN** Dependable farm equipment since 1945  
**CENTERLINE BAGGERS**  
• New & Used • Repair Parts



**KELLY RYAN AUGER/MIXER FEED WAGONS**

The right size at the right price  
Pull-type, truck-mounted or stationary



3+ Yrs. Super-Life Silage Bags  
Competitive Pricing  
Early Order Pricing  
Custom Bagging  
Financing Available

**BIOTAL INOCULANTS**  
**DIXIE CHOPPER - World's Fastest Mower**

**AG INDUSTRIAL INC.**

50 North Greenmont Road Rising Sun, MD 21911  
**410-658-5568 800-442-5043**



N.H. 2115 Forage Harvester, 4WD, 960 Hours, N.H. 360 N4 4-Row Corn Head, N.H. 340W Windrow Pickup, Real Sharp



Ford 6640S Tractor, 76 Hp Powerstar Engine, Sharp

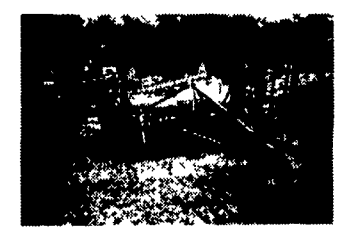
**TRACTORS & LOADERS**  
Ford 8670 4WD Tractor Hydramac 8C Skid Steer  
Ford 5000 Gas  
Ford 650 Gas  
Ford 1520 23 HP 4WD  
Ford 841 Gas  
Ford 5000 Tractor w/ Cab  
Ford 6610, 72 HP  
Ford 6640S, 76 HP  
Ford 655 TLB 4WD, Cab w/A/C  
Ford 345 C w/Loader  
Ford 550 TLB, 2WD, Cab  
Ford 777 B Loader Attachment  
NH 425 Skid Steer, Gas  
NH L455 Skid Steer  
NH L553 Skid Steer  
(2) NH L555 Deluxe Skid Steer  
(2) NH L785 Skid Steer  
AC 5040 Tractor  
AC 6080 w/Loader  
Bobcat 641 skid steer  
Case 580B Tractor Loader  
Case 1835-B skid steer  
Deutz 1920 L&G Tracto w/60" Deck Int. 656 Gas Tractor  
JD F912, Frt Cut Mower w/60" Deck  
Mitsubishi 650G Tractor w/ Front Blade  
Yale Forklift, 5000 Lb Lift

NH 258 Rake  
NH 320 Baler  
NH 415 Discbine w/Swivel Hitch  
(2) NH 411 Discbine  
(2) NH 463 Disc Mower  
NH 495 Haybine  
(2) NH 499 Pivot Tongue Haybine  
NH 1034 bale wagon  
NH 770 Harvester 2RN & WPU  
NH 849 Round Baler  
NH 855 Round Baler  
NH 890 Harvester  
NH 892 Harvester  
NH 939 N4 Corn Head  
NH 2 RN Snapper Head  
Badger BN950 Forage Wagon  
CIH 8455 Round Baler  
Deutz 360 Rake  
Hesston 1010 Hydroswing Haybine  
Hesston 1120 9' Haybine  
Hesston 1150 12' Haybine  
MC Rotary Scythe

**MISCELLANEOUS**

NH 510 Spreader  
NI 213 Manure Spreader  
Ag Wrap 5x5 Bale Wrapper  
BH 257 7" Rotary Mower  
Case Int. 475 12' Rock Flex Disc  
Cub 41/2' Pull Type Disc  
Brillion 12' Packer w/ (2) 5' Pups  
JD 3 Bottom PLOW  
JD 4 Bottom PLOW  
Bolens ST120 lawn tractor  
Ber-Vac 24' Field Cultivator  
Cushman 5' front cut mower  
Vermeer TS60 truck mount tree spade

**HAY & FORAGE**  
NH 144 Windrow inverter  
NH 640 Round Baler Silage Special  
NH 273 Baler w/54 thrower  
NH 2115 Self Propelled harvester  
NH 489 Haybine  
NH 1495 Haybine, Gas, Hydro  
NH 276 Baler w/58 thrower



Ber-Vac 615 24' Field Cultivator w/Land Leveler & Rolling Baskets.



Woods S 260 3 pt. Side Mount Rotary Cutter w/Dollie Wheel.



**DEUTZ Like Never Before**

**Meet the World's Most Advanced Line of Industrial Diesel Engines**



**Deutz FL-912/913 Air Cooled**  
THE LEGEND - Stubbornly reliable - known survivors. Field repairable. Unmatched portability. Redesigned for more power. They just get better and better. **35-175 Hp**

**Deutz FL-1011F Oil/Air Cooled**

SMALLER - SMOOTHER - QUIETER. Eight years of evolution keeps improving the lead. Outstanding array of accessories make this series exceptionally adaptable. Sold extensively to the construction industry. **20-75 Hp**



**Deutz FM1012/1013 Liquid Cooled**  
CLEAN - QUIET - PROVEN. Extremely fuel efficient. Designed from the ground up to meet all proposed emissions standards. Available with Integrated radiator or conventional radiator. **75-235 HP**

**Deutz FM1015 Liquid Cooled**

BIG - CLEAN - QUIET. Extremely fuel efficient. Compact V-design. Big engine feature; individual cylinder heads, 4-valves per cylinder. Deutz Quality at a competitive price. **276-608 HP**



All Deutz engines EPA certified for Off-Highway duty.

Check our low price program engines:  
• 912 Blue Line Diesels  
• 913 Orange Line Diesels

**Call For The Name of Your Nearest Deutz Dealer**



**Stauffer Diesel Inc.**

Ephrata, PA 17522 PH: (717) 738-2500  
Branch Office: Irwin, PA (412) 864-6969 (Pittsburgh Area)