

**Excellent Ford Tractors**

- 8730, cab, air, 4WD, PS, 4 remotes, 20 8x38, 1,200 hrs.
- TW-20, cab, air, 20.8x38, weights, 4,600 hrs.
- TW-5 II, 4WD, canopy, 20 8x38, 1, **SOLD**
- 9600, cab, air, DP, dual remotes, 5,000 hrs
- 8210, cab, air, 4WD, 18 4x38, weights, 4,100 hrs
- 7740 SLE, cab, air, 4WD, 18.4x34, 2,600 hrs
- 7700, DP, dual remotes, 18 4x34, 5,800 hrs
- 7600, DP, 1 remote, 16 9x38, weights, local trade
- 7000, DP, 1 remote, 16 9x38, 197 **SOLD**
- 6610 II, cab & air, DP, dual remote, creeper, 2,800 hrs
- 6610 II, rollbar, DP, 18 4x34, 1,800 hrs
- 6610, rollbar, DP, dual remotes, 16 9x30, 3,400 hrs
- 6610, DP, 18 4x34, 1985 model, 1,600 hrs
- 6600, DP, dual remotes, 540/1000, 15 5x38, 3,100 hrs
- 5000, diesel, 8 spd, dual remotes, 15 5x38, 1971, 5,000 hrs
- 4630, 4WD, shuttle w/Ford ldr, 1,000 hrs
- 4610 II, SU, diesel, 8 spd, 14 9x28, 1,600 hrs
- 4100, diesel, 8 spd, 16 9x24, 1 remote, 3,700 hrs
- 4000 SU, diesel, 14 9x28, 3,800 hrs
- 4000 SU, diesel, 8 spd, 14 9x28, 2,900 hrs
- 4000 SU, gas, 8 spd, w/Ford QT ldr, 1,400 hrs
- 3910 II, 4WD, 1989 w/Ford ldr, 350 hrs
- 3910, diesel, 14 9x28 w/Ford QT ldr, 1,400 hrs
- 3000, gas, 8 spd, PS, 1975, 5,000 hrs
- 1900, 4WD power steering w/Ford ldr, 1,600 hrs
- 1700, 2WD, rollbar w/Ford 4' mower, 1,700 hrs
- JD 4440, cab, air, quad, 18 4R38, 4,900 hrs
- JD 2955, cab, air, hi low, 18 4x38, 1,900 hrs
- JD 2750, 4WD, hi-low w/JD 245 ldr, 2,900 hrs
- JD 2550, hi low, canopy, 1,000 PTO, 1,800 hrs

**Equipment**

Ford 151 plow, 4x18 btms, auto reset  
Sauder 7' snow blade  
18 4x38 Ford Axle Duals  
Weights to fit most Ford tractors

**Ford Loaders**

7413 QT fits TW25 thru 8830  
777D fits 6700 thru 7710 2WD  
DuAL 210 fits 7700 & 7710, 2WD & 4WD  
JD 146 w/valve, off JD 2630  
JD 145 w/valve, off JD 2030

All Tractors Tested On Our Farms.

Tractors Stored inside

-Please Call For Appointment-

**Burkholder Bros.**

Lebanon, PA 17042

(2 miles West of Schaefferstown)

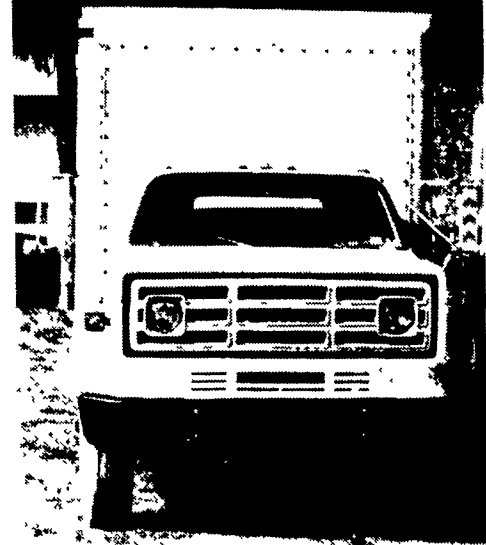
2 Locations

717-272-2352

717-949-2123

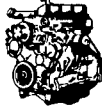
Lloyd  
330 Crest Rd.  
Lebanon, Pa.

Leon  
400 Flintville Rd.  
Lebanon, Pa.



**2 - 1982 GMC 7000 366**  
with 18' and 22' van bodies, 23,000 GVW  
**\$3,500/obo 717-386-2635**

**SAVE \$\$ ON NEW HOLLAND ENGINES**



CHECK OUT THESE PRICES...  
On in Stock Replacement Engines for Tractors, All Engines Include Injection Pump, Injectors, Oil Pan, Water Pump, Starter, Fuel Filter, Manifolds and 1 year warranty. We need old engine core or a \$2,000 charge will be applied

- 82840609.....LIST \$4,972.95.....SALE \$4,095.00  
201 cu in - 3.3 Liters - Max Gross HP 64.5
- 4000, 4100, 4200, 4500, 4600, 4610, 455C, 615, 530A, 531, 532, 535, 540, 540B, 545A, 545C, 560, 555, 555ALX, 555B
- 82840611.....LIST \$6,041.95.....SALE \$4,850.00  
5000, 5100, 5200, 5500, 5610, 6500, 6600, 6610, 6700, 6710, 355C, 650, 655A, 655C 7000, 755, 755A, 755B
- 82841507.....LIST \$7,387.95.....SALE \$5,975.00  
268 cu in - 4.4 Liters - Mx Gross HP 102 with turbo  
7710, 7700

**SKID LOADER ENGINES**

- 82841436.....LIST \$4,858.95...SALE \$3,950.00  
L783, L785 Frd Eng 57 HP Diesel 3 Cyl, w/Elect Shutoff
- 9827706.....LIST \$6,150.95.....SALE \$5,395.00  
LX665 ISM 50 HP Diesel 4 Cyl Turbocharged
- 86508761.....LIST \$4,645.95.....SALE \$4,095.00  
L&LX 865, 885 67 HP Diesel 3 Cyl w/EFSO & turbocharger Engines For L455, L553, L555 With Kubota Engines Available Now!



110 South Railroad Ave  
New Holland, PA 17557  
(717) 355-2121

M-F 7:30 to 5:00  
Sat. 7:00 to Noon



**48" Potato Washer**  
**(610) 286-9510**

1992 7110 Magnum, FWD, 2,662 hrs.  
1982 FMC Multi-row green bean harvester  
Baur hard hose irrigation, 950'  
—All Shed Kept & Excellent—  
**(609) 935-0348**

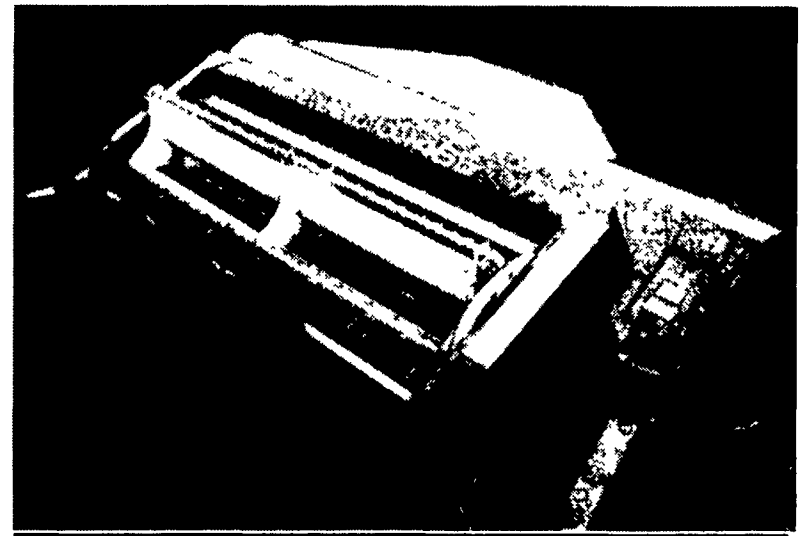
**Quality haymaking**

The New Holland Model 1465 Haybine® mower-conditioner features a new header with a five-bat reel for more uniform crop flow. You get a cleaner cut and less scalping in a proven design. And the "1465" can be ordered with a mechanical tongue shift or hydraulic tongue shift. Other great features include:

- A torsion-bar roll-pressure system
- Chevron-design rolls for thorough, gentle conditioning and fast drydown
- 100% bolted knife assemblies



When performance, reliability and durability count, you can count on the "1465".



**QUALITY USED EQUIPMENT FOR SALE**

- IH 584 Tractor
- NH 499 Haybine w/New Rolls
- MF 520 12 ft. Disc Harrow
- NH 489 Haybine, New Rolls & Paint
- NH L35 Skid Loader
- (2) NH 489 Haybines
- NH 900 Harvester w/919N3 3 Row  
Corn Head & Hay Pickup
- NH 412 Discbine
- NH 770 Harvester
- JD 1219 Mower Conditioner
- NH 890 Harvester
- (2) NH 256 Rake
- Dion Forage Box on 10 Ton Gear
- JD 894A Hay Rake
- NH 27 Blower
- NH 162 Tractor **SOLD**
- NH 28 Blower
- NH 144 Windrow Inverter
- IH 430 Baler w/thrower
- NH 326 Baler w/Thrower
- Hesston 555T Round Baler
- NH 310 Baler w/thrower
- JD 27 14 ft Flail Chopper
- NH 273 Baler w/thro **SOLD**

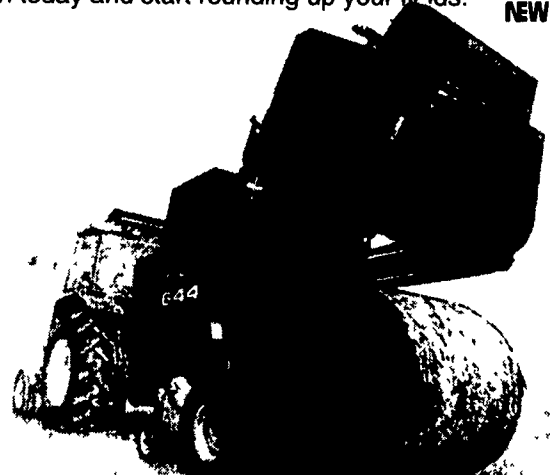
**New Holland lets you bale wet or dry**

If you want to make hay, straw or silage, look no further than the New Holland Model 644 Silage Special round baler. The "644" is filled with features you demand so you can bale the way you want:

- Bale-Slice™ option (on Fastnet™ mode) cuts the crop as the bale is being formed so it's easier to feed or grind
- Wide, floating pickup for large windrows
- Endless belts for added durability in tough crops



Stop in today and start rounding up your fields.



**BHM FARM & LAWN EQUIPMENT**  
SALES - PARTS - SERVICE  
Route 934, 2 Miles North of Schaefferstown, PA  
Telephone 717-867-2211

**"Your Need is Our Challenge" Coopers**

John Deere Sales and Service EST. IN 1937  
Chestertown, MD • Cecilton, MD • Glasgow, DE  
410-778-3464 410-275-2195 302-834-0114

**Cecilton Location • 1-888-JD DEALS**

**COMBINES & HEADS**

Interest Waiver Till Sept 1, 1998 or 6.5% Financing

- JD 9500, 2WD, field ready, excellent shape
- JD 7720, 1980, excellent condition w/220 flex head
- JD 7720, 1979, good cond w/216 flex head
- JD 6600 1978 JD 643 CH, w/poly corn snouts
- (2) JD 643 Corn Heads, excellent
- JD 920 Flex Head

**TRACTORS**

- Case IH 722 **SOLD** 50 hrs
- Case IH 395 w/400 hrs
- Belarus 505, Excellent Condition
- Ford 9N, Gas \$2,500
- JD 950, 2WD, Turf Tires

Large Selection of Used Lawn Mowers in Stock!

**IN STOCK TRACTORS**

JD 7810 JD 7410 JD 7405

**DRILLS & PLANTERS**

Great Plains 14' No Till Drill w/Coulter Cart  
Great Plains 30' Drill

**MISCELLANEOUS**

- JD 145 5 Btm. Plow, Excellent Condition
- JD 230 Wing Disk, 18'
- Krause 14' Disk
- JD 310 14' Disk
- IH 6 Row Cultivator
- JD 720 Mower Conditioner, exc. cond, like new
- Dunham 22' Crowfoot Packer
- Brillion 21' Crowfoot Packer

Call Us On Our Web Page [www.wnc-cooper.com](http://www.wnc-cooper.com)

Salesmen: Mike Kern, Paul Lake



**Chestertown Location**

**COMBINE & HEADS**

Interest Waiver Till Sept. 1, 1998 or 6.5% Financing

- JD 9600 1994 4WD w/duals 355 Sep. hrs
- JD 9600 1990 4WD
- JD 9600 1995 4WD w/Green Star, JD 930 Tilt Cutter Bar, JD 893 Corn Head
- JD 9600 1996 4WD w/275 Sep. Hrs
- JD 9500 1996, 4WD, Low Hrs.
- JD 9500 1991, 920 Flex Cutter Bar, 643 Corn Head
- JD 9400 w/920 Cutter Bar, 1989
- JD 9400 1996, Low Hrs.
- JD 8820 w/220 Platform
- JD 893 Corn Head
- JD 643 Corn Head
- JD 224 Flex Cutter Bar
- JD 220 Cutter Bar

**TRACTORS**

- JD 8870 1996 4WD, 914 Hours, 710/70R/38 Tires
- JD 7600 1993, MFWD, Cab, PS, 1,252 Hrs.
- JD 7400 1995 2W **SOLD** r Quad 748. Hrs.
- Kubota L4200, MFWD w/Loader

**ANTIQUA COLLECTOR TRACTORS**

- Allis Chalmers C
- Allis Chalmber CA w/Woods 59 Mower

**IN STOCK TRACTORS**

JD 8100 JD 9300 JD 8300

**DRILLS & PLANTERS**

- JD 7240 11R Planter, Vacuum, Corn & Bean Box, Insect
- JD 7000 12R Planter, Front Fold Liq. Fert., Insect. Monitor
- JD 750 15' No Till Drill
- JD 8300 23x7 Double Disc

**NEW SPECIAL**

- JD 1780 23 Row Max Emerge II

**MISCELLANEOUS**

- Brillion 25' Packer
- JD 610 12' Chisel Plow
- JD 960 18' Field Cultivator
- JD RM8 Cultivator
- Woods 214 Rotary Cutter
- JD 220 Disc Harrow, 23'
- JD 215 Disc Harrow, 14'
- JD 660 Rotary Tiller
- Woods 20' Batwing Mower
- Woods P990 Mower, Like New
- JD 900 5 Shank Ripper
- JD 201 Implement Trailer
- JD 115 Rear Blade
- JD 622 Gator

Salesmen: Bill Cooper, Jack Wright, Buddy Bramble

