

NI Model 5109 haybine, 9' cut, 1989, good condition, shed kept. 609-298-4374

NI manure spreader, model 3639, tandem axle, 400 bushel capacity, clean, excellent condition, \$4,200. (610)255-0479.

NURSE TANK: 525 gal. horizontal polly mounted on heavy oak skid, \$225. 717-328-2336.

NH 351 mower, excellent condition (717)365-3898

NH 354 grinder mixer, in very good condition, \$2000. 717-733-9204

NH 36' elevator, good condition, too long for my barn, \$1000. Matthew Stoltzfus, 346 Millwood Rd, Gap, 717/442-4753 after 7pm.

NH 36 flail chopper. Stoltzfus 27' green chp feeder wagon. 717/665-4743.

NH 404 hay conditioner, excellent. 717-949-3769 early mornings

NH 462 Disc mower, 7'10" cut, demo 3 acres only. Possible financing or trade equal value \$4700. 717/938-3517.

NH 477 haybine, looks & runs like new, \$2700. Chester. 610-932-2508

NH 477 haybine, in good working cond, stub guards. \$2,500. York County. 717-938-2267.

NH 479 haybine, excellent rollers, well maintained, field ready. York Co. 717-235-1766.

NH489 Haybine, good condition, new knife and skid plates installed. \$3000 717-375-4591

NH 492 haybine, excellent condition, \$6,500. (301)791-5468.

NH 499 haybine, working condition, \$2,500. Franklin County. 717-597-4485.

NH 499 hydro-swing haybine, like new rolls, good shape. \$5,400 or make offer. 717-438-3833. 717-354-0338.

NH 553 Skid loader, 1400 hrs New tires, \$7,900. 717-369-4225.

NH555 Skid Loader, new tires, good condition, \$6500 call 354-6706

NH 56R Rake, dual dolly wheels, rubber teeth, like new, all original, best 56 rake you will find. York Co. 717-235-1766.

NH 575 baler 1/4 turn, \$8,900. JD 1460 discbine \$9,500. NH 162 tedder \$2,800. Kuhn 300 GT gyro rake \$2,000. NH 1037 bale wagon \$9,500. (609)267-6071.

NH 770 Harvester, 1000 RPM, field ready, w/very good 770W pickup head. JD 450 crawler loader w/9300 backhoe, will separate (814)766-3687.

NH 790 forage harvester w/corn & grass heads, 6 years old, very good condition. 717/349-2611.

NH 846 round baler excellent condition \$4000 717-752-1817.

NH 850 round baler, good condition, \$2,200. (814)467-8839.

NH 853 round baler, like new, \$6750. 301/582-4738 leave message.

NH L250 skid steer loader, 18hp, 42" bucket, good tires, work lights, very good condition, \$6,800 OBO. After 6pm, (215)536-7997.

NH miniature baler, 8"x12" bales, string tie, \$5,500. (908)213-8943.

NI 12A Manure Spreader, 3 beater, like new, best you will find. York Co. 717-235-1766.

NI 400 hay rake, totally rebuilt, like new, \$1200. 610-799-2649

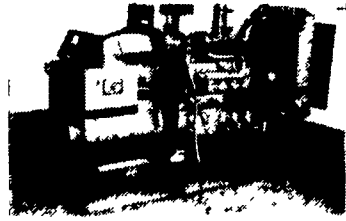
NI #507 7' Hay bind, new tires, \$2000, NH 5 bar Hay rake \$1500, NH 273 square baler w/58 thrower, excellent condition \$3500. 717-242-1933

NI 708 Uni-system, 1300 hrs, 767 superchopper, 3R-WN corn head, hay head. 717/865-4650.

NI 803C RWA, 850 hours, cab, air, 23.1x26 tires 70%. 419/924-2669.

NI Kinze corn planter, no till, double frame bean meters, excellent shape. (717)284-4628

POWER SYSTEMS ELECTRIC, INC.



SPECIALIZING IN GENERATOR SALES, SERVICE AND RENTALS
(717) 933-5617 (800) 875-6964

- (1) 175 KW Volvo Diesel, Used
 - (1) 100 KW AC, Diesel
 - 35 KW Chrysler L-P-G
 - (1) 24 KW AC LPG Used
- New PTO Generators in Stock

New & Used Transfer Switches

- (2) IH 886, Cab & Air, New Paint.....\$17,900 each
- IH 784, Rebuilt Engine, New Rubber.....\$12,500
- IH Hydro 70.....\$10,500
- Dunham Loader, fits 544 to 686, Excellent Condition.....\$2,250
- IH 986, Cab & Air, 477 Original Hours, Showroom New.....\$26,000

Financing Available
717-776-5515
JEFF SHOWAKER

- Located at Virginia Sales Lot
- IH 766, New TA & Clutch, Rubber & Paint.....\$12,500
- IH 686, New Rubber & Paint.....\$11,900

Call Mark At 540/289-9290

Clean off-the-farm, field test tractors
Most Reconditioned And Sold With Warranty
Positively no out-of-state Personal checks

Do you have storage problems?
If so we can help. Check this out!

Many Different Sizes Of:

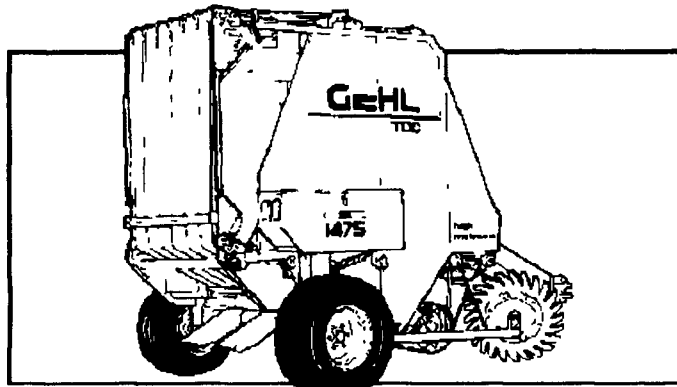
- Pallet Racking •
 - Shelving •
 - Cabinets •
 - Parts Bins •
 - New & Used Electrical Supplies •
 - Office Furniture •
- And many more Items.

Diversified Liquidators

310 S. Broad St.
Hellam, PA 17406
Hours: Mon. - Fri. 7:00 - 5:00
Sat. by Appointment
1-800-891-4208 717-755-7450



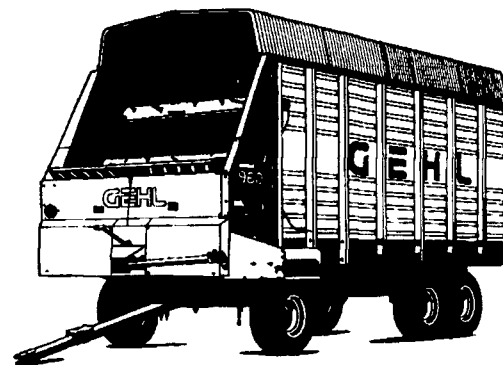
TOTAL BALE CONTROL



With Gehl's variable chamber round balers

- Total density control (TDC) - Custom-build bales.
- Bale control system - Monitors complete baling function
- Quick-wrap option - Speeds baling, preserve quality
- Constant velocity driveline - For smooth operation
- Electric dual twine wrap - With manual or auto control
- Low horsepower requirement - Needs only 40 h p

YOUR BEST FORAGE BOX VALUE



Gehl's new BU980 Self-unloading forage box has been redesigned for improved performance and durability
Features include:

- True variable-speed drive for infinite unloading speeds
- Single lever control
- Improved beater design.
- Stronger drive chain and reinforced roof
- Standard highway light package
- Optional folding 18-inch conveyor extension

FREEDOM FINANCING
9.9% for 48 months
With Full Cash Rebates

Stretch your equipment purchase dollars with Gehl Finance. Talk to your participating Gehl dealer about our current programs.

Waiver of Finance on new Gehl Equipment until **Jan. 1, 1999** Then 9.9% APR for up to 36 months

CASH REBATES

0% for 12 months - OR - 1.9% for 24 months - OR - 2.9% for 36 months - OR - 3.9% for 48 months

* Certain restrictions may apply. See your participating Gehl dealer for complete details. Gehl Company reserves the right to interpret, modify or cancel these programs at any time without prior notice.

Available From Your Local Participating Dealer

BINKLEY & HURST BROS.
133 Rothsville Station Rd. Lititz, PA

D.W. OGG EQUIPMENT CO.
5149 Cap Stine Rd. Frederick, MD
961 Leisters Church Rd. Westminster, MD

ECKROTH BROS. FARM EQUIPMENT
RR 02, Box 24A New Ringgold, PA

GUTSHALLS, INC.
RD 2 Rte. 850W Loysville, PA and
1201 Spring Rd. Carlisle, PA

HINES EQUIPMENT
PO Box 5, Rt. 22 Cresson, PA
RR 03, Bcx 550, Altoona (Bellwood)

ICKES FARM SUPPLY
Rt. 1 Hwy. 869 West Osterburg, PA

LEBANON VALLEY IMPLEMENT CO., INC.
700 E. Linden St. Richland, PA

LEHIGH AG EQ. INC.
6670 Ruppssville Rd. Allentown, PA 18106

.LINCOLN SUPPLY CO.
Rt. #2, Box 217A Somerset, PA

MILLER EQUIPMENT CO.
RR 01 Stauffer Rd. Bechtelsville, PA

MILLER-LAKE
RR 02, Box 273A Belleville, PA

PEOPLE'S SALES & SERVICE, INC.
Route 35 Oakland Mills, PA

STOUFFER BROS. INC.
1066 Lincoln Way West Chambersburg, PA

TOM DUNLAP
Rt. 220-Main St. Jersey Shore, PA

UMBERGER'S OF FONTANA
RR 04 (Fontana) Lebanon, PA

WERTZ FARM & POWER EQUIP.
PA Route 516 Glen Rock, PA

A.L. HERR & BRO.
312 Park Ave. Quarryville, PA