

Sale Reports

MELLINGER SALE

A sale of antiques and household goods was held Saturday for Charles and Mable Mellinger, 2439 Lincoln Highway E. There were 162 registered bidders at the sale, which was conducted by Robert E. Martin, Leola; Jeffrey R. Martin, New Holland; and Randall Ranck, Lancaster.

Items sold included an oak drop-leaf extension table, \$550; six plank-bottom chairs, \$135; a server, \$120; a child's chair, \$105; a potbelly stove, \$150; a youth rope bed, \$110; a cedar wardrobe, \$130; a Troy-Bilt mower, \$210; a four-gallon crock, \$52; a two-gallon jug, \$57.50; a miniature Conestoga Wagon, \$100; a toy covered bridge, \$105;

several postcards, \$42.50; three braided rugs, \$150, \$160, and \$200; a storage shed, \$250; and a Homer Laughlin dinner set, \$300.

DILLER SALE

A Public Auction of real estate and household goods was held April 25 by Lester and Lean Diller, 248 E. Main st., Leola, Lanc. Co., Pa.

The 1 1/2 story brick house with a 4 car garage was sold for \$84,000.

Other prices received were: antique banjo \$320; old settee, \$250; fold-up high chair on wheels \$210; Remington 308 bolt action gun \$210; break-front china closet \$150, 16 gauge double barrel gun \$130, old refrigerator \$75, chest freezer \$55 and milk cans up to \$18 each.

Carl Diller was the auctioneer.

CONSIGNMENT SALE

A Public Sale of personal property was held April 21 at Fremont Firemen's Social Hall, Mt. Pleasant Mills, Pa.

Some items sold were: punched tin pie safe \$400, oak extension table \$275, Sheraton style dresser \$300, flow blue meat platter \$210, Carnival glass bowls \$50 to \$115, World War II mine detector \$25 and flow blue plates \$25 to \$95 each.

Hassinger & Courtney were the auctioneers.

McCALLISTER SALE

A Public Sale of large doll collection was held April 25 by Ruth McCallister, 62 Fairfield St., Newville, Pa.

Some prices included: wicker baby buggies \$220 & 130, small wicker buggy \$55, old

child's shoes \$85 & \$80, old child's dress & shoes \$80, china head dolls \$20 to \$85, German bisque dolls \$100 to \$325, Bye Lo doll \$300, black Patty Pla doll \$130, Ideal Chatty doll \$120,

unmarked composition dolls \$30 to \$160, Alexander doll \$70, Betty Boop dolls \$15 to \$28 and 1972 Shirley Temple doll \$50.

Kevin M. Wicard was the auctioneer.

ABSOLUTE AUCTION

20 FARM TRACTORS

GREENCASTLE LIVESTOCK MARKET

Greencastle, PA

SAT., MAY 16, 1998 - 10:00 am

JD 4555 QR, duals, quickhitch	JD 4450 cab, power shift, 4300 hrs
JD 4840 cab, powershift, duals	JD 2555 canopy top
JD 4440 cab, powershift, duals	JD 4020 w/158 loader
JD 4440 cab, p shift, duals, q hitch	JD 2840 canopy top
JD 4250 cab, QR	JD 2630
JD 4240 4 post, QR, duals	JD 4620 synchrorange
JD 4240 4 post, synchrorange	JD 4010 tricycle
JD 4430 cab, QR	INT 966 8 speed
JD 4430 cab, synchrorange	FORD TW20 cab, duals
JD 3020, side console	Agco Allis 4660, 800 hrs
JD 7200, cap top, 1600 hrs	

If you have a tractor that you can sell at absolute auction, you may consign it to this sale. Please deliver Friday, May 15

Sale Ram or Shine
Terms Cash or Good Check
All tractors sell as is, where is

For further information about buying or selling a tractor contact:
Ben Blythe - Sale Manager Mel Hoover - P.A.L. AU-003111-L
757-562-6384 717-354-8397
Bert Blythe 814-632-7524

FARM EQUIPMENT AUCTION

FRIDAY, MAY 8, 1998

9:00 AM

LOCATED AT A&C DIFFENBACH AUCTION INC.,
100 W. JACKSON ST., NEW HOLLAND, PA

***** IMPORTANT *****
Consign Your Tractors & Farm Equipment NOW!
Call 717-355-7253 or Fax to 717-355-9547

ABSOLUTE ABSOLUTE APPROX. 1:00 P.M.
ABSOLUTE EQUIP Other Items Not Mentioned.

New 8', 10', 12', 14' Hay Racks; New 8', 10', 12', 14' Gates w/Hinges & Springs. Also will also be here for the auction. New 8', 10', 12', 14' & Hudson Trailers for Sale. New 8', 10', 12', 14' & Hudson Trailers for Sale.

ALL ADVERTISED ITEMS WILL BE SOLD AT THE AUCTION. NO SMALL ITEMS FOR SALE. SOME EQUIPMENT WILL BE SOLD AT RECEPTION DAYS.

RECEIVING DAYS - MONDAY THROUGH THURSDAY, MAY 4 THRU 7 - 7 AM - 7 PM. FRIDAY, MAY 8 - 9:00 AM - 12:30 PM. SATURDAY, MAY 9 - 9:00 AM - 12:30 PM. SUNDAY, MAY 10 - 9:00 AM - 12:30 PM. ALL EQUIPMENT WILL BE SOLD AT THE AUCTION. ABSOLUTE ROW OF EQUIP.

A & C DIFFENBACH AUCTION INC.
100 W. JACKSON ST., P.O. Box 186
New Holland, PA 17557
Phone: (717) 355-7253
Fax (717) 355-9547 Alan Diffenbach Auct. - AU2258-L

ACTION PACKED 2-DAY EVENT

Martin's 27th Annual Spring Auction of Carriages, Sleighs & Antiques

Friday, May 8 & Saturday, May 9, 1998
Lebanon Fairgrounds • Lebanon, Pennsylvania

ACTION PACKED 2-DAY EVENT

Friday, May 8th - 9:00 a.m.

Approx. 195 Catalogued Session of Coaches, Carriages & Sleighs

Competition Carriages, Commercial Wagons, 2 & 4 Wheel Pleasure Driving Carriages, Sporting & Hunting Carriages, Farm & Hitch Wagons In All Conditions (Restore!) Orig, New) Pony, Cob, Horse, Draft Horse Sizes, & Miniature Horse A Good Variety Of All Types & Sizes Also, A Nice Selection Of Sleighs

FRIDAY - IMMEDIATELY FOLLOWING

THE LAST CATALOGUED CARRIAGE/SLEIGH,

WE WILL BEGIN SELLING AT 2 PLACES.

- Equine Book Collection For The Carriage Museum of Am & Other Consignments of Books
- Inventory Reduction For Paul Z Martin, Jr Approx 300 Lots Of Good Quality Driving Appointments, Stable Fixtures & Other Horse Related Items

FRIDAY EVE. SESSION

Approx 300 Catalogued Lots of Coaching & Driving Appointments Harness, Carriage Lamps, Holly Whips, Etc

Something of interest for all persons involved in any type of horse related activities; be it driving, coaching, riding, restoring, decorating and the list goes on.

Something for everyone in all price ranges, including carriages and sleighs.

Plan now to attend both days!!

TERMS: Cash, Travelers Checks, Certified Checks - Personal or Business Checks Accepted
Only With A Current Bank Letter Of Guaranteed Payment, Made Payable to Martin Auctioneers, Inc

Saturday, May 9th - field session 9:00 a.m.

The field session includes over 6,000 lots and we will be selling with 4 or 5 auctioneers all day. *Plan to come Early!!*

TENTATIVE AUCTION SCHEDULE FOR SATURDAY - FIELD SESSION

9:00 a.m. - SECTION #3 Rows of Non-horse related items, primitives, tools, etc

TENT #1 - Remainder of Inventory Reduction For Paul Z Martin, Jr of Good Quality Appointments, Stable Fixtures, etc

10:00 AM - MAIN TENT - Horse Related Items, Harness, Carriage & Wagon Lamps & New & Used Tack Many Items Too Numerous To Mention Carriage Section - Approx 200 Carriages, Farm Wagons, Sleighs, Including Restored, New & Orig Cond In/All Sizes

12:00 NOON - SECTION #2

- Rows of Horse Related Items, Carriage & Wagon Parts, Poles, Shafts, Wheels
- SECTION #5 - Horse & Carriage Trailers, Flat-Bed Utility & Carriage Trailers

12:30 PM - MAIN TENT - HARNESS ONLY Draft Horse, Team Pair, Tandem, Single, Horse & Pony Sizes - Work, Show & Pleasure

1:30 PM - MAIN TENT - Saddles Of All Types & Sizes

2:30 PM - Private Collection of Approx 100 Strings of Bells

CONTACT OUR OFFICE (717) 354-6671

NO BUYERS PREMIUM

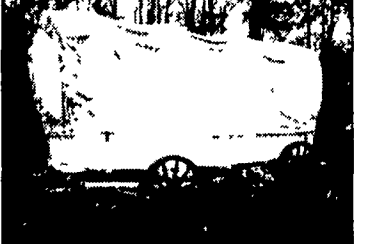
CATALOGUE INFORMATION - A limited number of catalogues will be printed. We will gladly send it to you by first class mail upon receipt of payment (5.15 00 U.S. \$ 12.00 U.S. Funds Canada & Overseas). Or send payment and up on to post, we will hold it for pick-up when you arrive at the auction site. Catalogues available on a first come first serve basis.



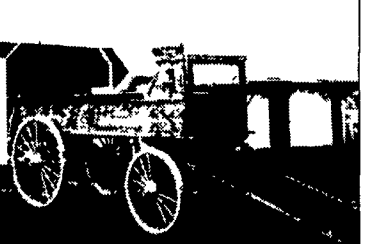
Some of the bells included in the private collection from Salisbury, MD selling on Sat at 2 30 PM



CIRCUS CALIOPE in good condition and it works One of approx. 200 horse drawn carriages and sleighs in the field carriage session at 10:00 AM



COVERED WAGON (Fri catalogued session)



HITCH WAGON Pony & horse sizes (Fri. session & Sat. sessions)



MULTI-PASSENGER COMMERCIAL WAGON (Sat. field session)



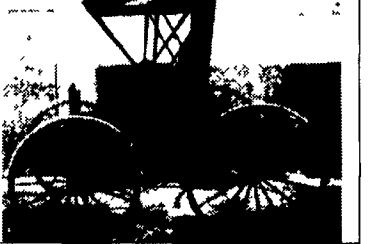
PAIR OF LAMPS (Many good quality single and pairs in Fri & Sat sessions)



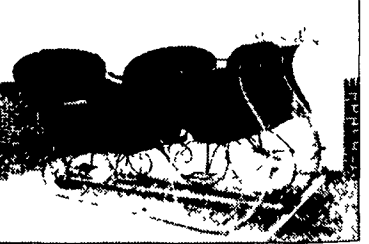
SINGLE SET OF PONY HARNESS SELLING IN SPECIAL SESSION OF HARNESS ONLY ON SAT. AT 12:30. Other sets will include pairs, tandem, 4-in hand, single, horse, pony & draft horse sizes, work, pleasure, show, etc



ONE OF MANY SADDLES SELLING DURING SPECIAL SADDLE SESSION ON SAT. AT 1:30 PM



TOP BUGGY (One of approx. 190 vehicles in Friday's session)



VIS A VIS SLEIGH (Fri. catalogued session)



P.O. BOX 99 • NEW HOLLAND, PA 17557
PHONE: (717) 354-6671
FAX: (717) 354-8248
 Auctioneers: Paul Z. Martin, Jr.
 Roger Spencer, Patrick Morgan
 #AU001863-L • #AU001454-L • #AU003557-L

Paul Z. Martin, Jr.
 President