

HUNTER KEYSTONE PETERBILT LP



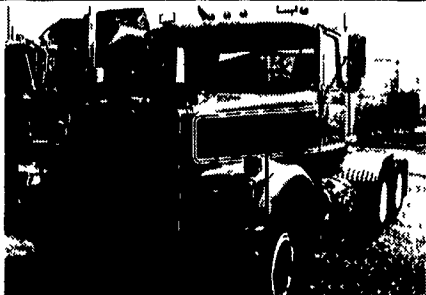
1467 Manheim Pike • Lancaster, PA 17604
717 299-6630 • 800 243-2458



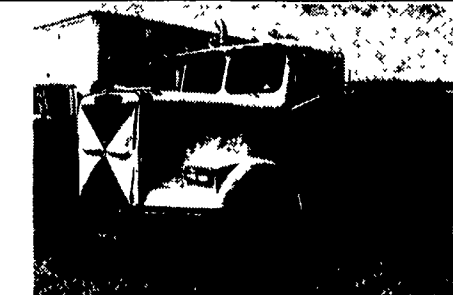
1998 Peterbilt 330 Cat 3126, 275 HP, 9 Speed Trans., 10# Frt. & 23# Rear; Air Trac. Susp., 10' Steel Dump



1998 Peterbilt 357 Tri Axle, Dump Chassis, Cat C10/C12, 8LL Trans, 18# Frt. & 46# Rears, Air Trac Susps., Single & Double Frame Avail.



1989 White Glider Cab, NTC 350 Cummins; RTO 146; 13 Speed; Sq. Hd Rear Axle, Hendricks Susp.



88 Freightliner NTC 350; RTX 12609, Rockwell Rears, 38,000; 355 Ratio; Air Ride Susp.

2 Axle & 3 Axle Tractor (Without 5 Wheel)



1977 Mack, 300 Mack Eng., 6 Speed Trans., Spring Susp.



1977 Mack RD 487 10' Dump, Scania Eng., 5 Speed Direct, 29,900 GVW

Warehouse Direct To Your Door!

Free UPS Over \$35

Trailer Hitches



Brake Controls



Fold-down Gooseneck



Convert - a - Ball



Ball Mounts



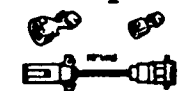
"PLUG-IN" Simple Wiring Hook



Pintle Hooks



Elec. Plugs & Adapters



WEAVER DISTRIBUTING 1-800-WEAVER-D
RR21 Fredericksburg, PA 17026

Free Catalog



(4) 1998 ISUZU NPR DIESEL 5-Spd., 14,250 GVW, A/C, AM/FM Cass. Will Take 14'-15' Bodies (How about a 12' Dump?)



1985 MACK 'R' MODEL E6 350, 15-Speed Fuller, 38RA on Camelback, Very Good Condition



1998 ISUZU NPR HD GAS, 250 HP V8, Auto, A/C AM/FM Cass., 14,050 GVW, 10' Omaha Dump



1997 ISUZU NPR 14,250 GVW, Auto Trans, 14' Van, A/C, AM/FM Cass, Stereo HARD TO FIND

Berks, Lebanon & Schuylkill Counties ONLY AUTHORIZED Isuzu Dealer

"0" DOWN LEASE RATES AVAILABLE HURRY! REBATE ENDS 4/30/98

READING MACK



610-929-9433

4226 Pottsville Pike, Reading, PA

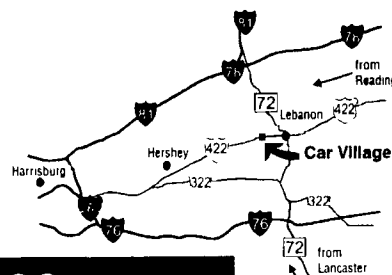
Business Hours:
Mon.-Fri. 9 to 9;
Sat. 9-4

RTE. 422 WEST
LEBANON, PA

(Across From Lebanon Valley Mall)

CAR VILLAGE

HEAVY DUTY TRUCKS



PHONE 717-274-2000 Toll Free 1-800-650-1420



4x4 CLUB CAB DUALLY 95 DODGE Black Beauty Is Here, Cummins Turbo Diesel, AT, A/C, 4:10 Gears, Tow Pkg, Chrome, Simulators, 32,000 Miles



QUAD CAB - 4 DOOR, 98 DODGE 3500 4X4 Almost New, Only 700 Miles, Cummins Turbo Diesel, 5 Spd., AC, 4:10 Limited Slip Axle, Great Tow Machine



5 SPD. DUALLY 97 DODGE 3500 ST. LARAMIE Awesome Tow Machine, Cummins Turbo Diesel, 5 Spd., AC, Tilt, Cruise, Heavy Duty Frt. & Rear Dana Axles, 4:10 Gear, New Truck Warranty



94 DODGE 3/4 TON 4X4 Heavy Duty 8800 GVW, Cummins Turbo Diesel, AT, A/C, Tow Pkg, 40,000 Miles, Remaining New Tk Warranty \$19,900



PERFECT 92 DODGE 250 2 WHEEL DR You Must See This One. Looks New Only 37,000 Original Miles, Cummins Turbo Diesel AT, A/C, Perfect Body



97 DODGE 2500 HEAVY DUTY PICKUP A Real Looker, All New TK Warranties, Only 22,000 Miles, Cummins H.D. 5spd L.S. 4:10 Gears, Tow Pkg.



5 Sp. Cummins 90 DODGE HEAVY DUTY, 3/4 Ton, Power to pull Cummins Turbo Diesel 5 spd., A/C, Gooseneck Hitch. Give It A Try



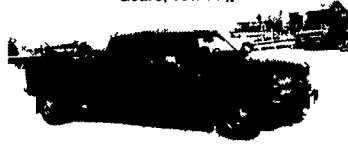
4X4 CLUB CAB 93 DODGE 250 LE Nice Tk - Only 65,000 miles, Cummins - Auto, A/C, Tow Pkg. Real Clean



4X4 DODGE CLUB CABS Cummins Turbo Diesel 97 - Auto - 31,000 miles 95 - 5sp - 49,000 miles New Tk Warranty, very nice



2 WHEEL DR. CREW CAB 95 FORD F350 XLT Very Nice, Very Clean, Only 22,000 Miles, Powerstroke Turbo, Diesel, AT, All Options, 4 10 Gears, Tow Pkg, Strong Tk



2-WHEEL DRIVE 96 CHEVY CREW CAB DUALLY Perfect, Like New, Only 11,000 Miles, High Output, 6.5 Turbo Diesel, Auto, AC, Tilt, Cruise, 4:10 Limited Slip Gear, Nice Tow Machine



58SPD POWERSTROKE 97 FORD F250 SUPER CAB 4 Wheel Drive, Great Tow Machine, Like New, Only 23,000 Miles, Tow Pkg., Aluminum Wheels



WESTERN HAULER 94 CHEVY CREW CAB DUALLY Only 58,000 Original Miles, Strong 454 f.i. V8, Auto, A/C, Gooseneck Hitch, This Truck Will Tow Big Loads \$17,900



4 Wheel Drive 94 CHEVY 4 DOOR DUALLY Excellent Tow Machine, 5sp, High Output 6.5 Turbo Diesel 4 10 gears, Gooseneck Hitch, Only 40,000 Miles, New Tk Warranty



4X4 DIESEL SUPER CABS 96 FORD F250's - 2 Available Powerstroke Turbo Diesel, AT, A/C, Tilt, Cruise, All Options - Aluminum Wheels, Low Miles, New Tk Warranty



4x4 SUPER CAB DIESEL, 94 GMC SLE Good Lookin' & Only 48,000 Miles, 6.5 Turbo Diesel, AT, A/C, Capt. Chairs, Console, Aluminum Wheels, Remaining Factory Warranty \$18,900



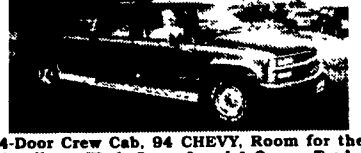
5 SPD POWERSTROKE SUPER CAB 96 FORD F250 4 Wheel Drive, Awesome Tow Machine, Gooseneck & Class 3 Hitch, Diesel Power, 5 Spd, A/C, 4:10 Gears, Dual Tanks, 32,000 Miles



1 TON DIESEL 97 FORD F350 XLT It's Perfect Only 23,000 Miles, All Fact Warranties, Powerstroke Turbo, AT, A/C, Sola Frt. Axle, A Real Truck



4 DOOR F250 4X4 WE HAVE (3) 97 Powerstroke, AT, 13,000 Miles 96 Powerstroke, AT, 32,000 Miles 96 Powerstroke, 5 Sp., 44,000 Miles



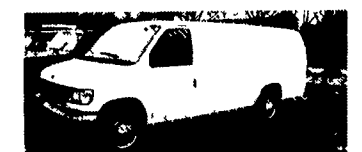
4-Door Crew Cab, 94 CHEVY, Room for the Family or Work Crew. Local 1-Owner Trade. Only 50,000 Miles, 6 5 Turbo Diesel, AT, A/C, Silverado Pkg., Beautiful



12 FOOT BOX TRUCK 88 FORD F350 Very Nice, Very Clean, Only 33,000 Original Miles, V8, Auto, Runs & Drives Great, Will Sell As Chassis



4X4 Diesel 92 FORD F250 Heavy Duty 3/4 Ton Runs Good, Looks Good, 7.3 Diesel, AT, A/C, Only 56,000 Miles Work Style Interior



Work Van, 95 FORD E250 Super Cargo Van Nice & Clean, 47,000 Miles, Heavy-Duty 3/4 Ton V8, Auto, A/C, Rear Glass Only



Looking For This? Like New 12 Ft. Rack Body Dump With Hoist \$3500



L-PAK DUMP 94 FORD SUPER DUTY Heavy Duty, 15,000 GVW, Power Stroke Turbo Diesel, 5spd, Only 32,000 Miles, Will Sell As Chassis