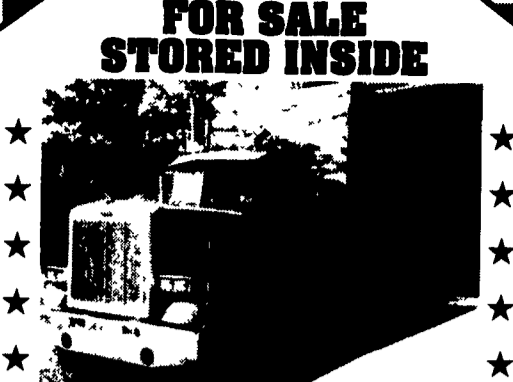


1987 Cobra 39' aluminum dump, frameless on spread axle with air ride, 2-way tailgate, roll tarp, 11R-24.5 tires. 410-275-2605

MOTORS
New & Rebuilt
350, 366, 427, 454
6.2 Diesels
Rebuilt & Used
Will install
Roll Back Service,
(at cost)
717-762-6415

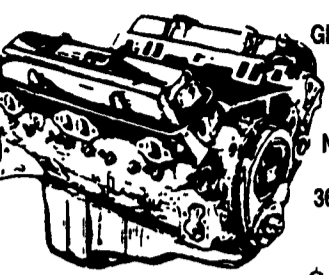
White 1-1/2 Tonne
Tractor Conv. 318
Detroit. Good
Rubber. Inspected.
Good Cond.
Motor is Tired.
\$1,200 OBO
717/653-4830



FOR SALE STORED INSIDE

1976 PETERBILT TRI-AXLE;
359 Conventional; 350 Cummins; Roadranger 915; Jake; 16/44's; Turner Lift; 90% Rubber; (RED); New Double Frame; J&J Aluminum Box; 3-Way Tail Gate Bed-Excellent; Truck Good, Stored Inside
\$23,000 Or Best Offer
(814) 237-0189

JONES
Goodwrench **ENGINE HEADQUARTERS**



GM GOODWRENCH
350 V8 1973-85
Part Number
10067353
New Engine - Not
Rebuilt
36 Month or 50,000
Mile
Warranty
\$1199⁰⁰

New Engine - No Core Fee

WE'LL MATCH ANY COMPETITOR'S PRICE!

6.5L GOODWRENCH DIESELS
From
\$3,175

Call 394-0711 for prices on other New or Remanufactured Goodwrench Engines. 2.5 Liter thru 454 cid. Gas and Diesel

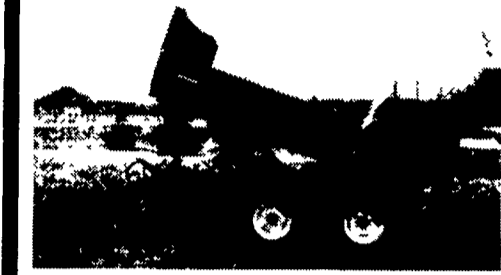
Chevrolet - Pontiac - Olds - Buick - Cadillac - GMC

JONES GM PARTS CENTER

1335 Manheim Pike, Lancaster, PA 17604
Easily Located on Rt. 72 Just off of Rts. 283 & 30
Hours: Mon-Fri 7:30 a.m. - 9 p.m. Sat 7:30-3
(717) 394-0711



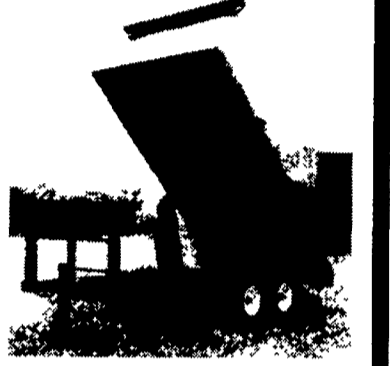
FARM DUMP TRAILERS
(Direct from the Manufacturer)



6-Ton Dump Trailer
• 10 ft. x 7 ft.
• Floating Tandem Axle
• 3 ft. Front, 3 ft. Tailgate & Grain Chute
• 16 in. Extendable Sides
• 10 ga. Floor & Sides
• 11Lx15 Flotation Tires
• 2-Way 4 in. x 24 in. Hydraulic Cylinder

7-Ton Road Dump Trailer

• Fifth wheel or bumper type
• 16 ft. x 8 ft. deck 3 ft. front rack and pockets side & back
• D.C hydraulic pump & battery mounted in locking tool box.
• 12 ton drop leg jack
• 10 ga. floor
• 6x3x3/16 tube main frame
• Sealed beam lighting
• 7000 lbs. per axle rating
• Electric brakes on both axle
• 16" tires on white spoked rims
• \$6400 U.S. delivered in Northeast U.S.A.



For Sale By Owner!
1995 Kenworth T-800-B Tri-axle Aluminum Dump, Bought New In 1996, Excellent Condition, 85,000 Miles, Cat-3306 300 HP, 8LL Trans., 40 Rears, 20 Front, Exc. Michelin Tires, 262" W.B. 18.5 Ton Legal, 17 Ft. Rts. Body.
\$69,900.00/offer
703-754-4523

BERKELMAN'S WELDING
RR 7, AYLMEER, ONTARIO, CANADA N5H 2R6
(519) 765-4230

JONES BEST BUY 4X4'S TRUCKS

Largest Stocking & Selling Extended Cab GMC Dealer in 7 States

PONTIAC • HONDA GMC TRUCK
1335 Manheim Pike, Lancaster
Prices based on straight sale, Tax & Tags extra. Trades accepted at actual cash value. Must present this ad at time of purchase for sale price.

JONES
717-394-0711

<p>'94 TOYOTA 4x4 5spd, 4cyl, 43K Miles #7748, Was \$13,900 SALE \$10,880</p>	<p>'95 GMC C25 SUBURBAN Diesel, 6.5 Turbo, AT, AC, SLE, #7870, Was \$26,400 SALE \$23,750</p>	<p>'94 FORD F150 4X4 AT, AC, 4.9L, Clean #7869, Was \$11,400 SALE \$9,750</p>	<p>'95 CHEV K25 XCAB 4X4 8600 GVW, Silverado, AT, AC, 350 #7793, Was \$19,900 SALE \$17,400</p>	<p>'95 CHEV 12 PASS. VAN BEAUVILLE AT, AC, 350, 30K Miles, #7813, Was 19,900 SALE \$17,700</p>
<p>'88 CHEV K15 4x4, Scottsdale, 350, AT, AC, #7881, Was \$8,950 SALE \$6,840</p>	<p>'90 GMC K JIMMY 350, AT, AC, SLX #7867, Was \$9,900 SALE \$7,800</p>	<p>'93 GMC CONVERSION VAN AT, AC, V6, TV, VCR, T, Low Miles, #7895, Was \$14,888 SALE \$12,488</p>	<p>'91 FORD RANGER 4X4 Auto, AC, V6 #7862, Was \$9,000 SALE \$7,850</p>	<p>'97 GMC 14' CUBE VAN AT, AC, Ramp, Nice Shape #7889, Was \$24,800 SALE \$19,877</p>
<p>'95 TOYOTA 4 RUNNER 4X4 SE, V6, AT, Air, 25K Miles #7787, Was \$25,800 SALE \$21,970</p>	<p>'94 GMC SUBURBAN 4X4 Starcraft Conv, AT, AC, V8, 40K Miles #7786 Was \$26,500 SALE \$22,800</p>	<p>'93 GMC K25 XCAB 4X4 AT, AC, 350, 8' Bed #7822, Was \$15,900 SALE \$12,550</p>	<p>'94 OLDS BRAVADA AWD, AT, AC, V6, Loaded #7784, Was \$17,700 SALE \$14,800</p>	<p>'95 DODGE CARAVAN Sport, AT, AC, V6 #7884, Was \$9,995 SALE \$7,985</p>
<p>'98 GMC CREW CAB 4x4 6.5 Turbo, SLE, 10,000 GVW, Loaded, 10K Miles, #19999, Was \$38,400 SALE \$34,400</p>	<p>'91 CHEV K15 4x4 AT, AC, 6.2 Diesel, Silverado #7850, Was \$11,400 SALE \$9,150</p>	<p>'95 GMC JIMMY 4x4 AT, AC, V6, 2 Dr #7888, Was \$14,800 SALE \$11,477</p>	<p>'91 CHEVY S10 V6, 5 Spd., AC #7851, Was \$5,900 SALE \$3,850</p>	<p>'98 GMC SIERRA XCAB 4X4 AT, AC, 350, 271, 3rd Dr #7879, Was-New \$29,000 SALE \$24,500</p>