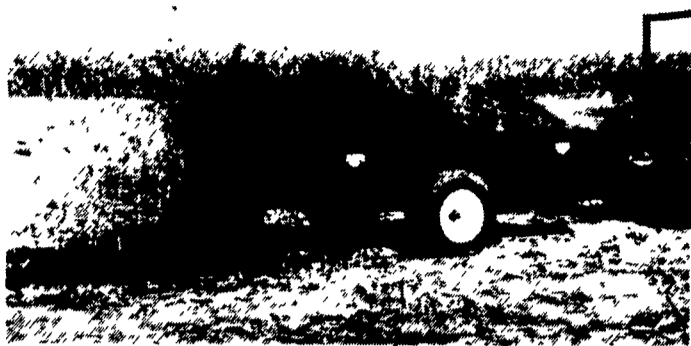


At Last...A Line Of Manure Spreaders Designed For The Low-Input Farmer.

Affordable and well-built, but no extra frills design.
Made for the way you work.



- 7 Sizes available from 25 to 128 bu.
- Ground Drive or PTO
- High-Density polyethylene floor comes with 20 year warranty.
- Prices start under \$1,000 (plus freight)

If you're in need of a manure spreader but can't justify spending \$4,000 for one, then call us now for a free brochure and price list.



2617 Stumpton Rd., Dept. LF
Bird-In-Hand, PA 17505
(717) 656-3050

Dealer Inquiries Invited

AG INDUSTRIAL INC.

50 North Greenmont Road, Rising Sun, MD 21911

410-658-5568 800-442-5043



N.H. 2115 Forage Harvester, 4WD, 960 Hours, N H 360 N4 4-Row Corn Head, N H 340W Windrow Pickup, Real Sharp

TRACTORS & LOADERS

- Ford 5000 Gas
 - Ford 650 Gas
 - Ford 1520 23 HP 4WD
 - Ford 841 Gas
 - Ford 5000 Tractor w/ Cab
 - Ford 6610, 72 HP
 - Ford 6640S, 76 HP
 - Ford 7710 2WD, 86 HP
 - Ford 655 TLB 4WD, Cab w/A/C
 - Ford 345 C w/Loader
 - Ford 550 TLB, 2WD, Cab
 - Ford 777 B Loader Attachment
 - NH 425 Skid Steer, Gas
 - NH L455 Skid Steer
 - NH L553 Skid Steer
 - (2) NH L555 Deluxe Skid Steer
 - (2) NH L785 Skid Steer
 - AC 5040 Tractor
 - AC 6080 w/Loader
 - Bobcat 641 skid steer
 - Case 580B Tractor Loader
 - Case 1835-B skid steer
 - CIH385 TL, 2 WD
 - Cub 154 Lo-Boy
 - Deutz 1920 L&G Tractor w/60" Deck
 - Int. 656 Gas Tractor
 - JD F912, Frit Cut Mower w/60" Deck
 - Myers Forage Box
 - Mitsubishi 650G Tractor w/ Front Blade
 - Yale Forklift, 5000 Lb Lift
- ### HAY & FORAGE
- NH 273 Baler w/54 thrower
 - NH 2115 Self Propelled harvester
 - NH 489 Haybine
 - NH 1495 Haybine, Gas, Hydro
 - NH 276 Baler w/58 thrower
 - NH 258 Rake
 - NH 320 Baler
 - NH 415 Discbine w/Swivel Hitch
 - (2) NH 411 Discbine
 - (2) NH 463 Disc Mower

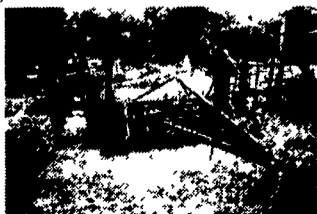


Ford 6640S Tractor, 76 Hp Powerstar Engine, Sharp

- NH 495 Haybine
- (2) NH 499 Pivot Tongue Haybine
- NH 716 Forage Wagon
- NH 1034 bale wagon
- NH 770 Harvester 2RN & WPU
- NH 849 Round Baler
- NH 855 Round Baler
- NH 890 Harvester
- NH 892 Harvester
- NH 939 N4 Corn Head
- NH 2 RN Snapper Head
- Badger BN950 Forage Wagon
- CIH 8455 Round Baler
- Deutz 360 Rake
- Hesston 1010 Hydroswing Haybine
- Hesston 1120 9' Haybine
- Hesston 1150 12' Haybine
- Kuhn GMD 66 HD Disc Mower
- MC Rotary Scythe

MISCELLANEOUS

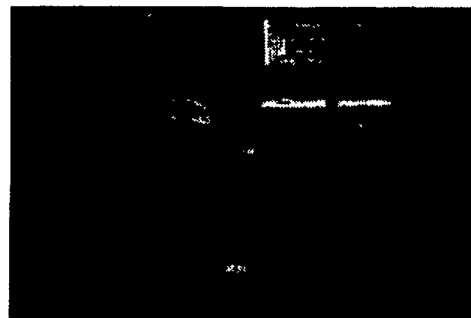
- NH 510 Spreader
- NI 213 Manure Spreader
- NI 245 Manure Spreader
- Ag Wrap 5x5 Bale Wrapper
- BH 257 7" Rotary Mower
- Case Int. 475 12' Rock Flex Disc
- Cub 41/2' Pull Type Disc
- Brillion 12' Packer w/ (2) 5' Pups
- JD 3 Bottom Plow
- JD 4 Bottom Plow
- Bolens ST120 lawn tractor
- Ber-Vac 24' Field Cultivator
- Cushman 5' front cut mower
- Vermeer TS60 truck mount tree spade



Ber-Vac 615 24' Field Cultivator w/Land Leveler & Rolling Baskets



ONLY 1 LEFT NEW 1715 27Hp 4WD Turf Tires, 1 0% Fin - \$2200 Down, 3yrs. \$258/month



Kubota B8200
4x4 w/Belly Mower, Low Hrs., New Ldr. Available
(717) 865-7575



John Deere 644B
Rebuilt Trans \$22,500
Curry Supply Co. Curryville, PA
1-800-345-2829

LESTER HORNING

585 Indiantown Rd
Ephrata, PA 17522

717-738-1677

JD 650 4x4, Nice	\$5,800
Farmall 230 Fast Hitch	\$2,200
NI 3632 Spreader, Tandem Axle, 2 Years Old, Like New	\$5,800
NI 9200 4R No-til Corn Planter, Dry Fert, w/Monitor, Very Nice	\$4,800
JD 7000 4RN, Dry Fert. SOLD	\$2,450
JD 3950 harvester, elec. controls w/5 1/2' hay head, excel cond	\$7,800
NH 354 grinder mixer, good cond.	\$1,850
JD 7000 6RN Corn Planter, No Fert	\$3,900
NH 492 haybine, 9', rolls excel	\$4,500
NH 326 baler w/chute, needs paint	\$2,850
NH 770 hay head, nice	\$650
NH 28 Blower	\$1,000
White 508 Plow, 4x18, SRS	\$1,950
Kuhn 12' Tedder, Pull Type	\$1,250

ALL AMERICAN MOWER SALE

(New, brand name only, Woods & Bush Hog)

FINISH MOWERS

5' 3pt. hitch belt drive	\$1395
5' 3pt. hitch side discharge	\$1675
6' 3pt. hitch side discharge	\$1550
6' 3pt. hitch side discharge w/tunnel	\$1650
6' 3pt. hitch rear discharge	\$1725

ROTARY CUTTERS

42" pull type for ATV w/engine	\$1495
5' 3pt. hitch	\$795
6' 3pt. hitch	\$1195
7' 3pt. hitch	\$1695
7' 3pt. hitch 2 blade offset	\$1945
10' pull type	\$4495
15' pull type bat wing	\$9895

DISC MOWERS

7' disc mower, 3 pt. hitch	\$4795
----------------------------	--------

A. L. HERR & BRO.
Established 1890
Park Ave., Quarryville, PA 17566
(717) 786-3521

HERR & LEAMAN

Quality Used Farm Equipment

10 miles S. of Lancaster, PA along Rt. 222



TRACTORS & COMBINES
DYNOED, RECONDITIONED, SERVICED &
AVAILABLE WITH 100% WARRANTY ON
ENGINE & DRIVE TRAIN



BUY - SELL - TRADE

Tractors

- JD 4255 power shift, cab, air, 2WD, very nice
- JD 2955 cab, air, MFV, 2318 hrs, 1-owner
- JD 4250 cab, air, power shift, MFWD
- JD 4050 cab, air, power shift, MFWD
- JD 2350 hi-lo indpt, PTO, 3000 hrs
- JD 4640 cab, air, power shift
- 1982 JD 4440, quad, factory cab & air, 1 owner
- JD 4440, quad cab, air, 4100 hrs, 1-owner
- JD 4240, 1982, quad w/year-a-cab & air
- JD 2240 w/hi-low, indpt PTO, 38" rubber
- JD 4430 Cab, air, quad
- JD 4320 w/or without cab, 1 owner, 5000 hrs, nice
- JD 4020D, power shift, side console, WF, 1-owner
- 1971 JD 4020D, WF, dual hyd, syncro, very sharp
- 1970 JD 4020D, dual hyd, WF, factory cab
- Case IH 7210, 1994 model, MFWD, 42" rubber, 965 hours
- Case IH 7110 Magum, 4 sp **SOLD** WD
- Case IH 5240 Maxxum, MFWD, cab, air, power shift, 2364 hrs
- Case IH 5130, cab, air, syncro w/reverser
- IH 784 year-a-round cab & air, 302 original hrs, 15.5x38 tires, w/adjustable axles, like new
- Case IH 585 w/IH loader
- IH 584 w/IH loader, 1900 hrs
- IH 584 diesel, 15 5x38 tires
- Late IH 1086 cab, air new T/A & clutch, nice
- IH 1086, 1981, cab, air, 2706 hrs, 1-owner
- IH 1086 cab, air, good local trade
- IH 986 cab, air, w/new TA & clutch, 1-owner
- IH 886 cab, air, **SOLD**
- IH 886 factory cab, air, 358 German engine, very sharp & original
- IH 886 factory cab, air, local trade, fair cond
- IH 1568, V8, w/factory cab, air, good cond
- IH hydro 100 fender tractor, 1976, black stripe
- IH 1466 factory red cab w/air, new TA
- IH 1066 fender, very nice, low hrs
- IH 766 fender tractor, new T/A & clutch, sharp
- IH 1456 fender dual, PTO & hydraulics, original
- White 2-85 cab, air, 2940 hours, 1-owner
- White 2-70 diesel, 1800 hrs, 1-owner, 13-6x38 tires
- Ford 800, good **SOLD**

Lawn & Garden

- JD 445 w/60" deck, 400 hrs., very nice
- JD 165 w/38" deck, hydro, nice cond.
- IH Cub Cadet 782, hydro, w/50" deck, 550 hrs, nice
- JD belly mower 72" to fit JD 850 & 950
- Case IH 60" 3 pt grooming mower, 3 **SOLD**

Combines (Shed Kept)

- 1990 JD 9500 low hours, loaded, very nice
- JD 6620 Titan II, 1985 w/1050 original hrs., very nice
- 1984 JD 6620 level land, turbo, hydro, 2-speed cyl, very nice
- JD 6620 side hill, 1982 model, very nice
- 1982 JD 6620 level land, turbo hydro, 2300 hrs
- JD 6600 diesel, air, hydro, 23" tires, nice cond
- 1979 JD 4400 diesel, air, heavy final, 2040 hrs
- 1991 Case IH 1660 axial flow, Cummins, 1524 hrs nice, w/1063, 6RN

Heads

- MF 1143 4RN, good,
- JD 643 lo-tin oil bath
- JD 643's hi tin, lo tin
- JD 443 4RN
- JD 444 4RW
- JD 915 flex
- JD 215 flex
- JD 213, flex head
- JD 213 rdgid grain head
- Case IH 1020, w/ 15' flexhead, fore & aft
- IH 820 13' flex head
- IH 810, 13' grain head

Implements & Misc.

- New Koyker Quick Attach Loaders
- For most JD & IH Farm Tractors
- Case 1840 skid steer, w/ Cummins diesel
- Case 1835C diesel skid steer
- Woods HD315, 15' batwing mower
- IH 50 stalk chopper, nice cond
- IH 40 stalk chopper
- JD 146 loader for JD utility tractor, w/ rear axle mount
- JD 220 center fold disc, good cond, 500 Acres since new blades
- JD 347 baler w/#40 ejector
- 5' 3pt mounted rotary mower
- (2) Glenco 9 shank soil savers
- 5 Shank Brillion soil saver, like new
- JD 7 shank mounted chisel
- IH 420 3b 16" mounted plow, nice cond
- New wide fronts to fit 3020 thru 4020
- Dual wheels-34's and 38's
- IH #80 snowblower, 2-stage, like new
- JD #275 7 1/2' snowblower, 2-stage

Box 191 New Providence, PA 17560

(717) 786-1606

Mon.-Fri. 8-6, Sat. 8-12

FAX 717-786-4773