

Public Auction Register

Closing Date Monday 5:00 P.M.
of each week's publication

FRI NOV 27 - 6PM New Holland Sales Stables, Inc., 101 W Fulton St., New Holland, Lanc Co., PA Feeder Cattle Sale. 717-354-4341.
SAT NOV 28 - 8:30AM - Tack 11AM Horse Sale. Middleburg

Lvst. Auct. Sis. Inc., Middleburg, PA. Clarence Shirk & John Shirk, Owners. 717-837-2222
MON. NOV 30 - 10AM 100 W Jackson St., New Holland, Lanc Co., Pa. Hay, grain & straw auction. A & C Diefenbach Auction, Inc.

DECEMBER

TUES. DEC. 1 - 548 Alexander Spring Rd., Carlisle, PA. Fed Cattle Sale. Carlisle Livestock Market, Inc., 717-249-4511.

TUES. DEC. 1 - Rogers Comm. Auct. 20 mi S of Youngstown, OH on St. Rt. 7, to Rogers, OH, 1 mi W on SR 154 to auction. Equipment Consign. Auct., lawn & garden, firewood, lumber & more. Rogers Community Auction, Inc., 330-227-3236.

WED. DEC. 2 - 109 N Maple Ave., Leola, Lanc. Co., PA Lumber & Building Materials Sale Wolgumuth Auction, 717-656-2947.

WED. DEC. 2 - 10AM Wolgumuth Auction, 109 N. Maple Ave., Leola, Lanc. Co., PA. Wolgumuth Hay Sale. Dennis Wolgumuth, Auct.

WED. DEC. 2 - 6:30PM. 100 W Jackson St., New Holland, Lanc. Co., Pa. Winross, Hess, farm & toys. A&C Diefenbach Auction Inc.

FRI. DEC. 4 - 7PM. New Holland Sales Stables, Inc., 101 W. Fulton St., New Holland, Lanc. Co., PA Horse Sale 717-354-4341.

FRI. DEC. 4 - 7PM Fingertakes Livestock Exc., 3865 Rt 5&20, Canandaigua, NY. Feeder Cattle Sale. 716-394-1515.

Lancaster Farming, Saturday, April 25, 1998-B51

Dairy and Livestock Sales

SAT. DEC. 5 - 10:30AM Mel's Stables, 834 Wallace Rd., New Holland, Lanc Co., PA. Horse Sale. Mel Hoover, Auct. 717-354-8397.

MON. DEC 7 - 10AM 100 W Jackson St., New Holland, Lanc Co., Pa. Hay, grain & straw auction A & C Diefenbach Auction, Inc.

WED. DEC. 9 - 10AM. Wolgumuth Auction, 109 N Maple Ave., Leola, Lanc. Co., PA Wolgumuth Hay Sale. Dennis Wolgumuth, Auct.

FRI. DEC. 11 - 9AM. 100 W Jackson St., New Holland, Lanc Co., Pa. Tractors, farm equip., & supplies. A&C Diefenbach Auction Inc.
FRI. DEC. 11 - 12 Noon. Middleburg Livestock Auct. Sis., Inc Middleburg, PA. Dairy Sale. Clarence Shirk & John Shirk, Owners. 717-837-2222.

Willier, Inc.
Quality Cattle
We are always looking for Dairy Cattle - Registered & Grade
Call 717-626-3113

SAT. DEC. 12 - Lebanon Valley Lvst. Mkt., 1 mi E of Fredericksburg, PA along Rt. 22. Work, driving & riding horse sale. Consign. welcome, 717-866-5783 Keith Byers & Gerald Hoover, Aucts.

MON. DEC. 14 - 10AM. 100 W Jackson St., New Holland, Lanc Co., Pa. Hay, grain & straw auction A & C Diefenbach Auction, Inc.

TUES. DEC. 15 - 548 Alexander Spring Rd., Carlisle, PA Fed Cattle Sale. Carlisle Livestock Market, Inc., 717-249-4511

TUES. DEC. 15 - 7PM 548 Alexander Spring Rd., Carlisle, PA Christmas Sale, lambs & goats. Carlisle Livestock Market, Inc., 717-249-4511

TUES. DEC. 15 - 7:30PM 548 Alexander Spring Rd., Carlisle, PA Feeder cattle sale Carlisle Livestock Market, Inc., 717-249-4511.

WED. DEC. 16 - 10AM. Wolgumuth Auction, 109 N Maple Ave., Leola, Lanc. Co., PA Wolgumuth Hay Sale Dennis Wolgumuth, Auct.

WED. DEC. 16 & THURS DEC 17 - 8:30AM. 5174 Horst Rd., Chambersburg, PA Lawn & garden, misc (Wed), farm machinery & tractors (Thurs) Marion Auction Service, 717-375-4700

FRI. DEC. 18 - 1PM. 548 Alexander Spring Rd., Carlisle, PA State graded feeder pig sale. Carlisle Livestock Market, Inc., 717-249-4511

SAT. DEC. 19 - 10:30AM Mel's Stables, 834 Wallace Rd., New Holland, Lanc Co., PA Horse Sale Mel Hoover, Auct. 717-354-8397

MON. DEC. 21 - 10AM 100 W Jackson St., New Holland, Lanc Co., Pa. Hay, grain & straw auction A & C Diefenbach Auction, Inc.

SAT. DEC. 26 - 8:30AM - Tack 11AM Horse Sale Middleburg Lvst. Auct. Sis. Inc., Middleburg, PA Clarence Shirk & John Shirk, Owners 717-837-2222

MON. DEC. 28 - 10AM 100 W Jackson St., New Holland, Lanc Co., Pa. Hay, grain & straw auction A & C Diefenbach Auction, Inc.

TUES. DEC. 29 - 548 Alexander Spring Rd., Carlisle, PA Fed Cattle Sale Carlisle Livestock Market, Inc., 717-249-4511

WED. DEC. 30 - 10AM Wolgumuth Auction, 109 N. Maple Ave., Leola, Lanc. Co., PA. Wolgumuth Hay Sale Dennis Wolgumuth, Auct

The Vintage Sales - Willier, Inc.

SPRING DAIRY HEIFER SALE

Friday, May 1, 1998 10:00 AM

Vintage Sales Stables, Paradise, PA

800 HEAD SELL



REGISTERED & GRADE

SALE ORDER: Open Heifers sell first, with springers and bred heifers throughout the rest of the day.
SOME FEATURES!!!

OPEN HEIFERS:

- A Super Set of High Quality Open Heifers Sell!
 - * A top group of Delaware open heifers: Wormed, Vaccinated and ready to go!
 - * A top set of weaned heifers: Clean, stylish and perfect for summer pasture!
 - * A Super Set of Breeding Age Sire Identified Heifers!
- ATTENTION: All Open Heifers Sell Vaccinated, Dewormed and ready to make you money!**

BRED HEIFERS:

- If you need Shortbreds We've got them!
- * A top set of 25 sire identified shortbreds: Select Sires Breeding!
 - * Over 100 Head of the Fanciest Shortbreds Around!

SPRINGERS!!! SPRINGERS!!! SPRINGERS!!!

- 200+ Head Sell. If you make your living selling milk, We have a super set of springers that could stand in ANYONE's barn!
- * A Super Fancy Daughter of To-Mar Blackstar Sells! She is Super Fancy with a Perfect Udder!
 - * A local dairyman sends four sire identified May due heifers
 - * 10 Fancy Springing Heifers
 - * Hundreds of other Fancy Springers sell!

SIRES FEATURED:

Luke, Blackstar, Leadman, Delight, Polo, Melwood & Many More!

BUY WITH CONFIDENCE:

As always, all cattle pregnancy examined and are inoculated with Triangle 9-HS for IBR, BVD, P13, Lepto, & H Somnus. NEW THIS YEAR! Open Heifers & Shortbreds sell dewormed and de-liced.

TO CONSIGN HEIFERS AND FOR MORE INFORMATION:

Contact Willier, Incorporated at 717-626-3113. Although Health Charts are no longer required, we recommend them because of the strong out of state buyer interest. All cattle can be delivered to Vintage on Wednesday, April 29 and Thursday, April 30

DIRECTIONS: Vintage Sale Stables are located on Route 30, 10 miles east of Lancaster just before the town of Gap.

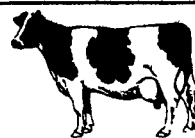
OUT OF STATE BUYERS NEED A BANK LETTER OF CREDIT.

VINTAGE SALES STABLES
Paradise, PA
(717) 442-4181



WILLIER, INCORPORATED
Lititz, PA
(717) 626-3113

NEW HOLLAND SALES STABLES, INC.



New Holland, Pa.
Located 12 Miles East of Lancaster, just off Rt. 23

MAY 2, 1998
AMERICAN LINEBACK PROMOTIONAL SALE
12:00 Noon
50 Head Sell

12 Open and Shortbred Heifers Come To Us From New York -- 40 Years of Breeding Top Lineback ...

- Several Calves From Wisconsin, Including A Red Lineback --
- 5 Cows and Heifers From Lanc. Co. Herd --
- 2 Breeding Age Bulls With Dams over 20,000 Milk --
- 1 Really Good Fresh Heifer and Bull Coming From Maine --

If you have wondered about the Lineback Breed, Come To This Sale -- The Association Will Be Here To Help You Into The Opportunity For the Future.

Sale will be at New Holland Sales Stables, Inc.

Barn 717 354 4341 Fax 355 0706 Home 717 397 5538
Norman & David Kolb, Mgrs. 61L

DENNIS KOLB

LANCASTER, PA

FRESH COWS/BRED HEIFERS
GRADE & REGISTERED
STOCK BULLS
GOOD HERD AVAILABLE!

PRIVATE SALES DAILY

The Next Public Auction

Will Be At
Lancaster, PA

NITE SALE

NITE SALE

THURSDAY, MAY 7, 1998
7:30 P.M.



Phone 717-569-6800 - Dennis Kolb
717-569-2106

Sale Manager: Dennis Kolb Pedigrees: Henry Kettering
Auctioneer: Robert C. Mullendore (AU-000644-L)