

# Kutztown Young Farmers Hold Banquet

KUTZTOWN (Berks Co.) — The Kutztown Young Farmer Chapter recognized its own outstanding members during its annual banquet held recently.

Receiving the 1998 Outstanding Young Farmer over 30 (years) Award were Robert and Melinda Tercha.

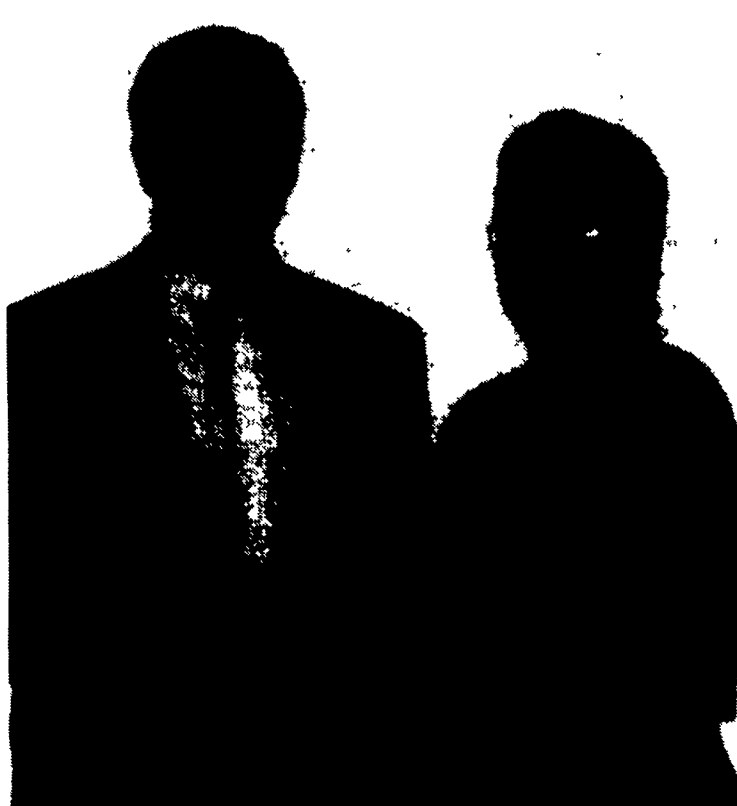
Ken and Denise Sanner were the recipients of the 1998 Community Service Award.

A short slide presentation during the meeting showed the farming practices and involvements achieved by the Terchas and the Sanners.

The plaques were sponsored by Crop Production Services in Macungie.



Ken and Denise Sanner receive the 1998 Community Service Award from the Kutztown Young Farmer Chapter.



Robert and Melinda Tercha receive the 1998 Outstanding Young Farmer Over 30 (years) Award, presented by Kutztown Young Farmer Chapter.



BUY, SELL, TRADE OR RENT THROUGH THE  
**CLASSIFIED ADS**

## LANCO CONCRETE WALLS, INC.

• Agricultural • Commercial • Residential

**We Do NRCS Approved Work • Quality Workmanship**

- Retaining Walls
- Bunker Silos
- Manure Pits
- Slatted Floor Deep Pits
- Footers
- Flatwork

### LANCO CONCRETE WALLS, INC.

PO BOX 256, Bird-In-Hand, PA 17505

CONTACT: Steve Petersheim, Jr (717)291-4585 • FAX (717)291-4686

### LONG DISTANCE PHONE SERVICE As Low As 6.9 cents a minute

For 1+ and 800/888 service 24 hrs. a day 7 days a week

Rates vary depending in which state you're located

- NO Prepayment
- 18/6 second Increment Billing
- Monthly Billing
- Verified Account Codes and individual billing for community phone use
- NO Access Codes
- Low Foreign Rates - Canada 12 cents a minute

#### Inquire About 13.9 cpm Phone Card Calls

NO surcharge. \$5 rechargeable cards are activated and ready to use. Call anywhere in the world. May use your social security # as a pin number. Activate for any amount you want over \$10

Tel-Com Phone Services 539 Hilltop Rd. Myerstown, Pa. 17067

For more information call 717-866-6520 or 800-779-7729

only during office hours from 8 AM to 5 PM Monday thru Friday

**Part time or full time sales people wanted**  
**Inquire about the \$50,000 annual income plan**  
**Customers cut your bill to zero with our referral plan**

### 21st Annual Shalom Christian Academy

## Dutchfest

May 1 & 2, 1998

#### Friday Evening • 7 pm

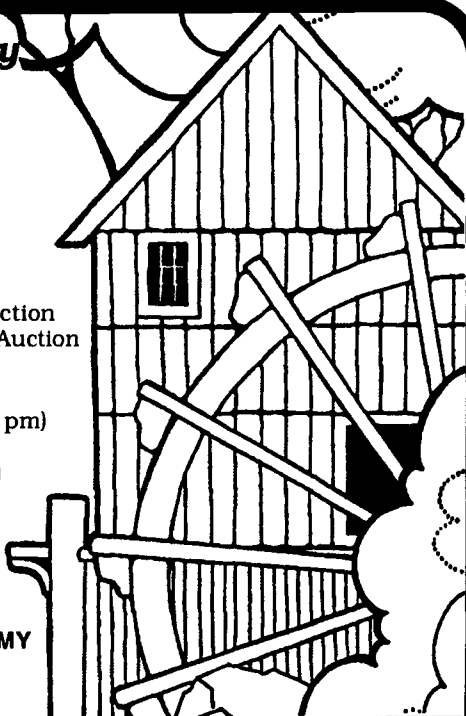
- Food Concessions • Craft Show (5:30-9 pm)
- Orioles Memorabilia Auction (6:30 pm) • Heifer Auction
- Winross Truck & Toy Auction • Longaberger Basket Auction

#### Saturday • 7 am

- Breakfast (7-9:30 am) • Craft Show (8:30 am-3:30 pm)
- General Merchandise Auction (9:00 am)
- Meat Auction (11:30 am) • Quilt Auction (1:30 pm)
- Chicken Bar-B-Que • Children's Activities
- And much More!

1/2 MILE NORTH OF  
Marion, PA

US ROUTE 11 & SOCIAL ISLAND RD  
SPONSORED BY SHALOM CHRISTIAN ACADEMY  
FOR INFORMATION CALL (717) 375-2223



This Ad Sponsored By.

Martin's Equipment Co.  
General Farm Supplies  
537 Falling Spring Road  
Chambersburg, PA 17201  
717-263-3505

Meyers Implements Inc.  
400 North Antrim Way  
Greencastle, PA 17225  
717-597-2176

Clugston Ag & Turf Inc.  
John Deere Equipment Sales & Service  
3213 Black Gap Road  
Chambersburg, PA 17201  
717-263-4103

### Auto-Darkening Safety For Every Welder

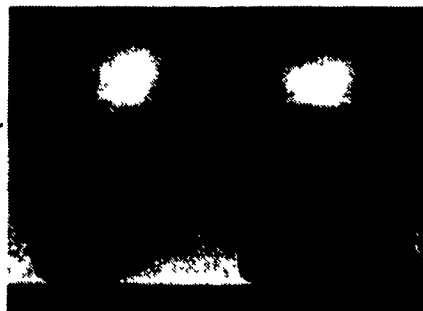
Hornell manufacturers highly-advanced welding lenses, helmets and respiratory systems to meet the needs of virtually any welder. Ask your Speedglas distributor for additional information and product literature for each of the products shown here.

Welding Hard Hats. Available with Speedglas APC or APC-V lenses, or with the Speedglas XL lens with a large 2.16"x4.21" (55mmx107mm) viewing area.

|      |        |
|------|--------|
| AP   | 149.00 |
| APC  | 216.00 |
| APCV | 269.10 |
| XL   | 351.00 |

Speedglas-SideWindows™ lenses increase the viewing area by 100% in Speedglas XL models and by 113% in Speedglas APC models. Ideal for Speedglas Fresh-air respiratory systems.

New Models Available  
9000x 369.00  
Speed Glass Fresh  
Air II 719.10  
Free UPS Service on  
Helmets Only



### D.S. Machine Shop

238B Old Leacock Rd., Gordonville, PA 17529

717-768-3853