

Melard's Truck & Auto Sales

1289 Division Hwy.
Ephrata, PA 17522
Specializing in Mini Vans
(717) 738-4870

- 1996 Dodge Grand Caravan SE, 3.3 Auto, Air, Cruise, Cass, Privacy Glass, Tilt, Elec. Locks, Windows, Silver Fern, 64,000 Miles.....\$14,900
- 1995 Plymouth Grand Voyager SE Rally, 3.3 Auto, Dual Air & Heat, Elec. Windows, Locks, Cruise, Tilt, Cass, Privacy Glass, 48,000 Miles, Black.....\$14,400
- 1995 Dodge Grand Voyager SE 3.3 Auto, Air, Cruise, Tilt, AM-FM Cass, Elec. Windows, Locks, Privacy Glass, 64,000 Miles, Maroon.....\$11,900
- 1995 Ford Aerostar XLT 4.0 Auto, Dual Air & Heat, Elec. Windows, Lock, Cruise, Tilt, AM-FM Cass, Privacy Glass, 33,000 Miles.....\$13,500
- 1994 Plymouth Grand Voyager SE 3.3, Auto, Dual Air & Heat, AM&FM Cass., Elec. Window Locks, Cruise, Tilt, Privacy Glass, Child Seats, 27,000 Miles, Green.....\$14,400
- 1994 Plymouth Grand Voyager LE 3.8 Auto, Dual Air & Heat, Elec. Windows, Seat Locks, Cruise, Tilt, AM-FM CD Privacy Glass, 48,000 Miles, Black.....\$12,900
- 1994 Plymouth Grand Voyager Sport 3.3 Auto, Air, Cruise, Tilt, AM-FM Cass, Elec. Windows, Locks, Privacy Glass, 59,000 Miles, Black.....\$11,500
- 1992 Mazda MPV V6, Auto, Air, Elec. Windows, Locks, Cruise, Tilt, Privacy Glass, 53,000 Miles, Dark Blue.....\$9,500
- 1990 Dodge D300 Cummins Diesel, Auto, Utility Body, 87,000 Miles, Good Work Truck, Red.....\$8,000
- 1994 Pontiac Grand Prix SE 2 Dr, 3100, Auto, Air, Cruise, Tilt, Elec. Windows, Locks, Steering Wheel Radio Controls, 42,000 Miles, Green.....\$10,500
- 1994 Geo Metro 4 Dr, 5 Speed, Air, 44,000 Miles.....\$4,400
- 1993 Ford Temp 4 Dr., 4 Cyl., Auto, Air, 85,000 Miles, Teal.....\$3,900
- 1995 GMC Safari Ext. AWD, 4.3 Vortex Auto, Dual Air & Heat, Elec Windows, Priv Glass, Locks, Seats, Cruise, Tilt, AM/FM Cass, 47,000 Miles, 2-Tone Teal.....\$15,900
- 1995 GMC Safari Ext. AWD, 4.3 Vortex Auto, Air, Elec Windows, Priv Glass, Cruise, Tilt, AM/FM Cass, 42,000 Miles, Tan.....\$14,900
- 1996 Ford Aerostar XLT ETD AWD, Auto, Dual Air & Heat, Elec Windows, Locks, Cruise, Tilt, AM/FM Cass, Priv Glass, 49,000 Miles, Green.....\$14,500

USED TRUCKS



97 GMC SL 2500 Ext Cab 4x4 350 Vortex Eng AT AC AM-FM Cass Cruise Tilt 171 Limited Slip Rear Local One Owner 28 000 Miles Green
\$22,900



88 GMC 2500 SL 4.3 FI 5 Spd PS PBS Sliding Rear Window 7200 GVW Clean Truck 55 000 Miles Local One Owner Silver
\$5,900



95 Chevy K 2500 Cheyenne 4x4 350 FI Eng AT AC AM FM Cass Cruise Sliding Rear Window 8600 GVW 4 10 Limited Slip Rear Red 51 000 Miles
\$16,700



94 Ford F 250 Super Cab XL 7.3 Direct Injection Turbo 5 Spd AM FM Cass 8800 GVW 355 Rear Local One Owner Dk Blue, 87 000 Miles
\$13,500

MARTIN'S AUTO SALES

1025 W. Main St. New Holland, PA 17557
(717) 656-6621

1996 Ford F-350 Crew Cab, Dually XL Package, 5 Spd., AC, Green With Grey Int., Powerstroke Turbo Diesel, Low Miles, Fully Serviced, Balance of Factory Warranty.....\$22,900

1996 Ford F-250 XL, Ext. Cab, Heavy Duty, 4x4, AT, "Ton's of Factory Warranty Left", Only 6,000 Mile, Wow - Like New Yet!
.....\$21,900 Sale \$21,400

1995 Ford F-250 XLT Ext. Cab, Heavy Duty, 4x4, AT, AC, PW, PL, Tilt, 1 Owner Truck, Blue/White, Matching Topper, Meyers Snow Plow, Alloys (Will Sell Without Plow), Powerstroke Diesel, 51,000 Miles, Nice Truck.....\$23,900

1995 Ford E-350 XL Club Wagon, 15 pass Van., AT, 351, Dual AC, 42,000 Miles, Blue, Won't Last Long, Was \$15,900 Now \$15,500

1983 Ford F150 XLT, AT, AC, 351, 2 Wheel Drive, Black, New Rebuilt Trans, Good Running Truck, 98,000 Miles.... Only \$3,500

1988 K5 Blazer 4x4 AT, AC, 350, Local 1 Owner, Only 49,000 Miles, Brown, Many New Parts.....\$7,900

(717) 949-6513

Birchwood
Auto & Truck Sales



HOSTETLER

Truck Bodies & Trailers
717-667-3921

Milroy, PA - Located between Lewistown And State College on Rt. 322 in PA.



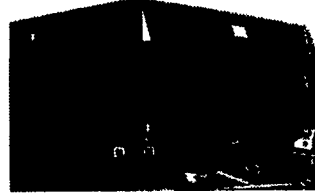
Tool Boxes, 36"x18"x18" \$147
24"x18"x18" \$132 42"x18"x18" \$155
30"x18"x18" \$140 48"x18"x18" \$163



Hostetler 7'x12' Contractor Dump Trailer, Dump Truck Body, with Truck Scissor Hoist, 10,000# GVW, 30" Front with 20" Sides & Tailgate, Heavy Duty
\$5,695



Dump Trailers
5'x8' Single Axle 5000# GVW \$2,650
6'x10' Tandem Axle 7000# GVW \$3,495
6'x10' Tandem Axle 10,000# GVW \$3,655



We have developed a Dump Body Tailgate for Knapherde Grain Bodies Call for More Information

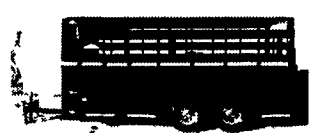
Financing & Leasing Available



Corn Pro Bumper Pull Livestock Trailer, Corn Pro, Rubber Torsion Axles, Treated Pine Floor
6'x16' 3500# Axles \$3,350
6'8" Wide x 16 Long 3500# Axles \$3,575
6'8" Wide x 16 Long 6000# Axles \$3,895



Eby Trailers In Stock, Both Gooseneck & Bumper Pull
CALL FOR PRICES AND AVAILABILITY



New Design Moritz Livestock Trailers Semi Round Front New Sides and Rear
6'x16 7000# GVW \$3,350
6'8" x 16 Long 7000# GVW \$3,575



Grain Bodies, Removable Sides, Various Rears Available, With or Without Hoist 16' w/40 Sides Not Installed
\$2,550



Skid Loader Trailers 82" Between the Fenders, 10,000# GVW
14' Long \$2,495
16' Long \$2,595
18' Long \$2,760

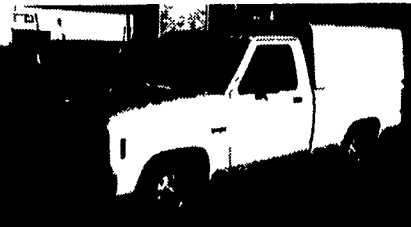


YORK MACK YORK GMC TRUCK

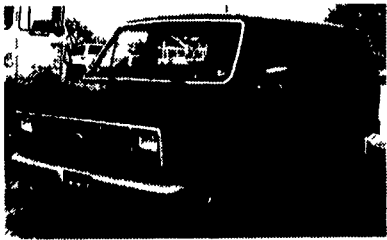
55 S. FAYETTE ST.
YORK, PA 17404-0833
(717) 792-2636
BRIAN SACKETT



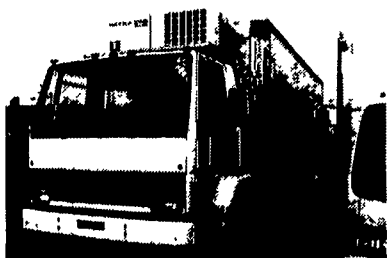
1987 MAC LS250 - Mack Diesel, 33,000 GVW
\$6,500



1988 Ford Ranger w/cap, 4 Cyl, 5 Speed, 49,000 Miles, New Tire, PA Insp.
\$3,700



1991 Ford Econoline 150 Cargo Van High Miles, Good Mechanically
\$2,900



1986 Ford CF700 29,500 GVW, 20' Reefer w/TK-MDI Diesel, 5&2 Speed
\$12,500



(1) 89 & (1) 91 International 9670 Cab Overs, Cummins Diesel, 9-Spd. Trans, Call for Individual Specs. **\$9,900**



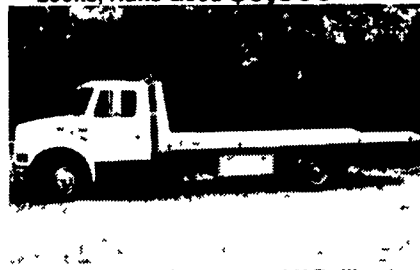
1988 Chevy Silverado, V8, 305 Engine, Automatic, Ext. Cab, Bedliner, 6' Bed, AC (4x4), Excellent Looks, Runs Good **\$9,900**



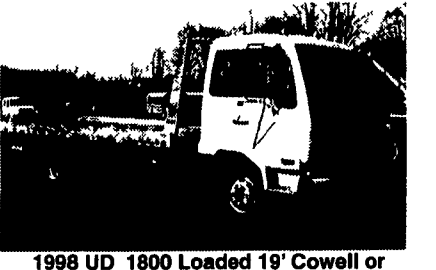
1990 Ford F350 14 ft. Alum. Stake Dump, V8, At, New Inspection, 90,200 Miles
\$9,900



'97 & '98 UD 1400 & 1800, 16' & 18' Van Bodies and Cab & Chassis Avail. - Call for Details -



1998 International 19' & 20' Rollbacks (Cowell or Danco) w/Wheel Lift, Loaded - Call for Details -



1998 UD 1800 Loaded 19' Cowell or Danco Rollback, Wheel Lift - Call for Details -

CENTRAL GARAGE, Inc.

610-889-4581 or 800-860-4581

South 2nd St.
(Rt. 419) Womelsdorf, Berks County, PA



1993 GMC Diesel w/14' Van Body, Auto Trans, AM/FM
\$9,700