

WENGBERS OF MYERSTOWN FARM MACHINERY

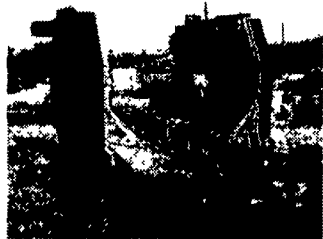


Salesmen:
Alvin Martin
Bob Lentz
Dave Wenger

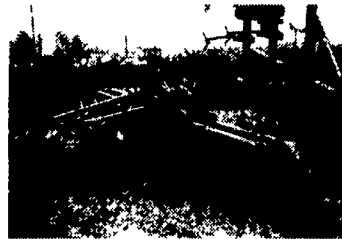
814 S. COLLEGE ST. (ROUTE 501)

(717) 866-2135

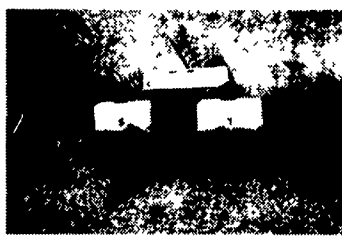
MYERSTOWN, PA 17067



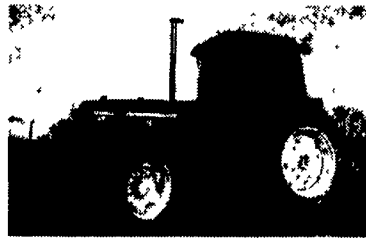
WOODS 3180 15' Batwing
Definitely the Cadillac of its' class.
Don't miss the savings
New & used on stock



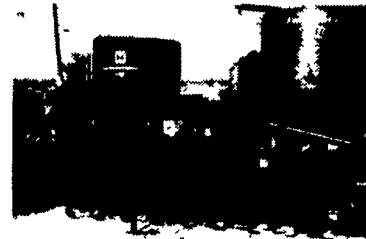
BRILLION 16' and 18'
end transport packers



IH 800 4 row 30" cyclo air corn planter,
liquid fertilizer, 1000 PTO pump



John Deere 2950 MFWD, good
mechanically, poor appearance,
priced right



Howard heavy duty 11' 3 pt.
1000 PTO rotovator



FORD 5600 60HP, Loader, wheel
weights, 2 remote hydraulics, load
monitor, rollbar

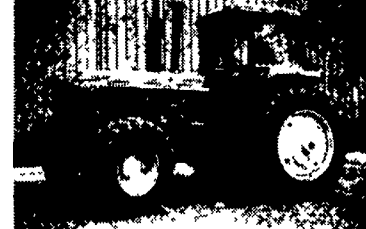


Kubota L35 Tractor/Loader/Backhoe,
75 Hrs, Sharp As New

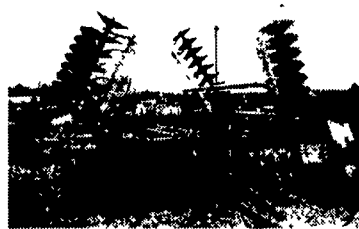
**YOUR WOODS
EQUIPMENT SOURCE**
WOODS
SEE OUR
NEW & USED
WOODS EQUIPMENT
AD ON PAGE C43



1980 GMC w/Jerr Dan 20'
rollback, 366 V-8 gas, 27,500
GVW, 5+2 trans



John Deere 4450 MFWD



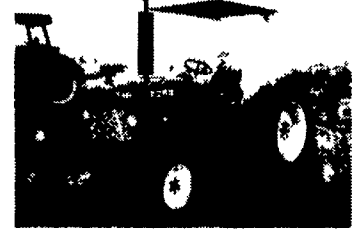
John Deere 230 20' wing fold
very nice disk



1995 Case IH 7210 MFWD, 3489
Hrs. 18.4x46, weights, nice



JD 7000 4-row with no-tills,
dry fert. can be wide or narrow



Ford 4610, 3 of these on stock



JD 7000 6R planter
w/no tils, liquid, nice

TRACTORS

- Case IH 7210 MFWD, duals
- JD 4450 MFWD, 15 spd powershift
- JD 4240 CAQ (COMING IN)
- JD 4030, 4 post, quad-range
- JD 2950 MFWD, cab
- JD 2640 utility, nice
- JD 2630, reverser, sharp
- JD 2010 gas, widefront, nice
- JD 435 2cyl. GM diesel, very average
- IH 1566 w/cab
- IH 1066, factory cab, weights, nice
- IH 684 w/2250 loader, nice
- Ford 6640 open station
- 3) Ford 4610 rollback and canopy
- Ford 445A 4WD Industrial loader w/3pt.
- Ford 5600 w/Ford 772 loader
- Ford 5000 diesel w/loader
- Ford 2600 diesel, rollbar and canopy
- Ford 6000 Commander diesel
- White 2-85 w/cab
- Oliver 1600 diesel
- Case 570 gas w/loader
- Case VAC w/3 pt. (great one to restore)
- Allis Chalmers WD 45 gas wide front
- Farmall H w/Snow blade
- Farmall MD w/P.S.
- JD LA w/cultivator
- JD MT single front wheel

CORNPLANTERS

- JD 7000 6R30 Liquid Planter
- JD 7200 4R low acres (sharp)
- JD 7000 4R Dry Fert.
- 3) JD 80 Planting Units
- JD No-Til Coulters for 7000 Planters
- IH 800 4R30, liquid cycle air
- JD H 2R Mtd. Planter
- Black Hawk 2R 3 pt. planter
- 3) Ford 309 2R 3 pt. corn planter

COMPACT TRACTORS

- Kubota 2150 HST 4WD w/loader
- IH 284 28HP gas 2WD w/snow blade
- Kubota B7100 HST 4WD w/loader
- IH 184 low boy w/loader & mower
- Bolens Iseki, 172 2WD w/mower
- 1980 GMC 20' rollback, 27,500 GVW, gas engine
- Kubota L305DT 4WD

ROLLOVER PLOWS

- JD 4600 5x18 On Land.....\$3500
- 3) JD 4200 4x16, 3x base.....\$2200 ea
- JD 4200 4x16, 3x base.....\$2850
- JD 4200 4x18, 3x base.....\$2200
- IH 140 4x16.....\$2600
- 2) IH 125 4x16.....\$2200 ea
- Ford 145 4x18 on land.....\$2000
- Case 600 4x16.....\$2750
- JD 3825 2x switch plow.....\$1950

CHISEL PLOWS & FIELD CULTIVATORS

- Wilbeck 7T soil saver (sharp)
- Glenco 7T Soil Saver
- Glencoe 5T Soil Saver
- Brillion 3T 3 pt. Soil Saver
- IH #11 Auto Reset Sub Soiler
- 2) 1 Shank 3 pt. Sub Soiler
- Kewanee 11T 3 Pt.
- JD 1600 10T 3 Pt. Chisel
- AC 7T 3 pt. chisel
- Kasco 5T 3pt chisel
- IH 4500 13' Field Cult.
- IH 4500 13' wing fold field cult.
- IH 45 16' 3pt f/cult
- JD 740 12' danish f/cult
- Hiniker 1120 18' flat fold f/cult.

MOWERS

- JD 1508 15' batwing
- JD 616 6' 3 pt rotary
- 3) Woods 3180 15' Batwings
- Woods 2126 10-1/2' mower
- Woods 12' Turf Batwing
- 2) Woods Cadet 7' 3 pt.
- King Kutter 4' thru 6', 3 pt & pull
- 2) Woods RD 7200 rear discharge 6'
- Woods RM 660, 6' estate
- Woods RM500 5' estate
- Woods belly mowers for Cub & A
- Mott 5' 3pt. flail
- 2) Toro reel mowers
- Bush Hog 5' & 6' 3pt. rotary mower
- IH 6' 3 pt. rotary mower
- BEFCO 110 9' estate mower
- Woods 59 Belly Mower for 8N
- Mott 38" Flail w/8 HP engine
- 2) Woods C114 9 1/2' rotary mower
- Caselh, NH, Deutz 3pt. disc mowers

BALERS AND HAYBINES

- NH 853 round baler
- NH 852 round baler
- JD 410 round baler
- Farmhand (Vermeer) 405 HDS round baler
- 2) NH 488 9' haybines (nice)
- FNH 489 9' haybine
- 2) JD 1219 9' haybine
- Case 550 9' haybine
- 2) JD 327 baler w/ejector
- FNH 316 Baler w/Thrower
- NH 65 compact baler

DISC HARROWS

- Case IH 475 13' disc, sharp
- JD 230 20' wing fold, sharp
- JD 225 7' HD offset disc, new blades
- JD 220 18' centerfold, new blades
- Krause 16' centerfold disk
- Kewanee 12' rockflex, nice
- Kewanee 11' HD rock flex
- Case 11' disk, nice
- Hutchmaster HD 12' offset
- 4) IH 8' & 10' transport disk
- AC 8' transport disk
- IH drag disks

COMBINES, HARVESTERS & CORNPICKERS

- JD 4420 combine, cab, air, diesel
- JD 300 Husker w/2RN
- (2) NH 770 Harvester 1R, 2R and hay
- IH 82 pull type combine
- IH 80 pull type combine
- JD 443 & 643 oil bath corn heads

PLOWS

- Ford 140 3x16 Auto Reset, 3 pt.
- Oliver 348 3x16 3 Pt. Auto Reset
- Oliver 3x16 3 pt. cushion trip
- JD F145 3x16 3 Pt. Trip
- IH 720 4x18 auto reset
- IH 450 4x16 3pt plow, reset
- 2) IH 450 3x16 3 Pt. Auto Reset
- IH 2x14 3pt. trip bottom
- IH 1x Fast Hitch Plow
- Super A and Cub Plows
- Several 2x 3 Pt. Plows
- Imco 1x3 pt. Plow
- Oliver 2x14 Pull Plow

ROLLER HARROWS AND PACKERS

- Brillion 18' packer w/end trans
- Brillion 16' Packer w/end trans
- Brillion 10' packer
- Brillion 12' packer w/rear transport
- Dunham 10' cultmulcher
- Brillion 10' cultmulcher
- Dunham 12' Cultmulcher
- Brillion 12' Cultmulcher

MISCELLANEOUS

- Richardton 1200 side dump (sharp)
- JD 8250 14x7 DD w/grass & fert.
- JD 8300 18x7 DD w/grass
- JD 8300 24x6 DD w/grass
- JD 8300 14x7 DD drill
- IH 510 17 DD w/grass & fert.
- Woods 6500 3 pt. backhoe attachment
- Woods 750 3pt backhoe (sharp)
- Kelley 30 3 pt. backhoe attach.
- Yetter 12' & 15' rotary hoe
- Long 6' stalk shredder
- Brady 5' stalk shredder
- IH 50 12' stalk shredder
- JD 27 14' stalk shredder
- (5) Belt 16' Alum. Elevator
- IH 1R PTO Potato Digger
- Oliver 2R Potato Digger
- 4) Pequea hay tedder
- (8) Gravity Bin Wagons
- Danuser 3pt. PTO post pounder
- (3) Danuser post hole diggers
- EZ Flow & JD 8' and 10' lime drill
- 2) Howard 11'3 pt. HD rotovator
- Woods 52" rototiller
- NH 328 spreader
- New Idea 362 w/tailgate & top beater
- New Idea ground drive spreader
- 18.4x38 Open Center Duals
- 20.8x38 open center duals
- Used Plow Colters (good selection)
- Herd 750 3 pt Spin Spreader
- Mechanical 2R 3 pt. Transplanter
- 2) Corn drag elevator
- 1995 Delta 16' stock trailer
- Several New & Used Loader Buckets
- Zimmerman 40' skeleton elevator
- NH 30' corn & hay elevator
- Allied 40' elevator
- Zimmerman 32' elevator
- New Idea 30' elevator
- 20' bale conveyor

SKID LOADERS

- Ford NH 555 diesel, nice, 40 HP
- Gehl 3825 33 HP Kub. diesel
- Hydra Mac 6C mini skid steer
- Ford NH LX485 (sharp)