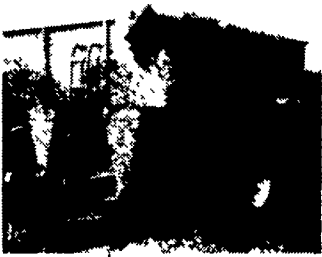


# Best Buys in Used Equipment

## MISCELLANEOUS MACHINES

### John Deere Model 500 Grain Cart



UM 3688 - Approx 500 Bu., 1000 PTO with 23.1x26 10 Ply Tires, Safety Warning Lights, Auger Unload from Hopper Sump Area, Good Paint, Nice - Ask For Don Hoover  
**ONLY \$6,900**

### Nice R Model Mack Truck Tractor, Twin Screw



Ask For Dean

### Purchase Or Rent This 4WD Extendahoe Tractor Loader Backhoe Ford 455 55HP 1988 Model

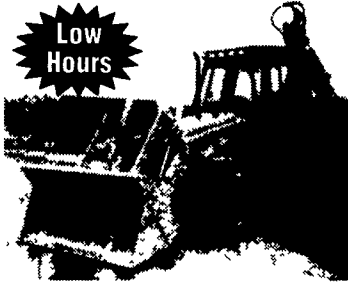


Rent \$150 per day • \$500 per week  
If you purchase - Use Case Credit Financing

**\$24,800**

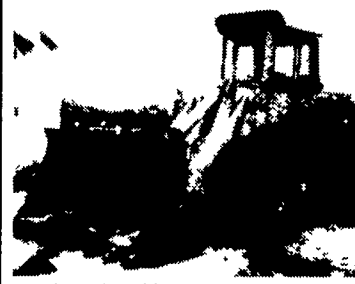
Very Good Cond., Serviced & Ready To Work, Torque Converter & Power Shuttle Reverser

### Case 580 Super L Turbo



**Low Hours**  
Cab Air Heater, Extendahoe, 4 in 1 Loader Bucket, Wobble Stick Controls, Deluxe Cloth Seat  
Ask For Dean or Leonard

### John Deere 644



Articulated Loader With Cab & Heater, Very Tight 3 Yd Loader with Heavy Duty Tooth Edge, 25x25 Tires, 1978 Good Solid Machine.  
Ask For Dean or Leonard

### This Truck Is Ready For Work IH 1800 Diesel DT 466 5 Speed 2 Sp. Rear



UT 3757 - Inspected, 30,000 GVW, 20 Foot Flat Bed, Runs Strong. Was \$6,900 For This Good Running Diesel Flatbed Truck, Stop In and Ask For Dean (Price Reduced - Must Go!)

### Case 1996 Model 590L



4x4 Extendahoe, UT 3889 With Front Aux Hyd., 890 Hrs  
**\$59,800**

UM 3740  
**LATE MODEL GEHL MODEL 175**  
Box Type Manure Spreader, 3 Years Old  
**\$2,950**

UM 3473  
**9 TON 3 AXLE TRAILER**  
16 Foot Deck Over Wheels  
**\$1,750**

### Rent By Week or Month or Purchase w/ Competitive Case Credit Financing Case 1550 Dozer with Cab & Air

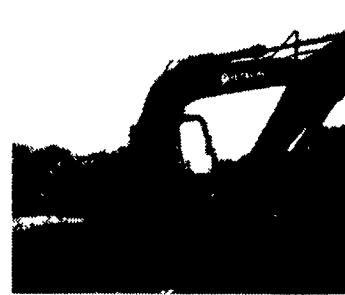


10' Straight Blade with Hyd. Axle, Cummins 6-T 830, 15 Ton Rear Winch, 90% New U.C.

**\$49,800**

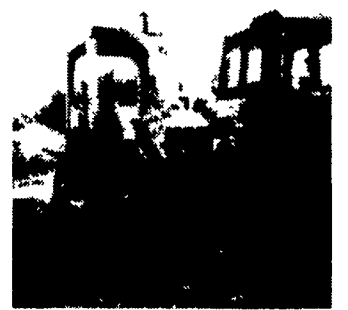
Must See To Appreciate  
Ask About Financing

### Long Reach Excavator In Stock - Hitachi EX100 Similar to JD 290



23,600 Lb. Rating, Very Good Condition  
**\$29,000**

### Price Reduced!



UT 3950  
Cat 951C, 90% New U.C., Rebuilt Engine, Ready to Work, Case Credit Financing  
**ONLY \$19,500**

### Check Out Our Used Skid Loaders, Serviced And Ready To Work

Ask About Competitive Financing Through Case Credit!

NE 4708  
**DEMO MCEL RATH**  
16,000 LB. GOOSENECK TRAILER With 20' Flat Deck and Additional 5 Foot Flip Deck and Ramps  
Ask Dean For Discount Price

UT 3978  
**CASE 580D DIESEL**  
6,000 Lb. Forklift, 21' Mast with 5' Forks with Side Shift Mast  
**\$14,800**

### DM Mack With Spreader



With 4000 Gallon Top Fill Tanker  
Ask For Dean  
Ask About Financing

UT 3971  
**CASE 1840 50 HP**  
Case Cummins Diesel with 63" Wide Bucket, Work Lights  
**\$10,900**

UT 3954  
**CASE 1845 C**  
(1221 Hours) With Ground Bucket with Teeth  
**\$14,500**

UT 3965  
**GEHL 4625 44 HP**  
Kubota Diesel Power with Self Leveling Loader, Sold New in 1994, 65" Bucket  
**\$10,900**

UT 3944  
**CASE 1835B DIESEL**  
With Quick Attach, 63" Wide Bucket

UT 3937  
**GEHL 3510**  
1985 Model with Ford Water Cooled Gas Engine, Good 8 50x15 Tires and Very Good 60" Heavy Duty Bucket  
**\$5,580**

UT 3959  
**CASE 1845C**  
With 73" Dirt Bucket with Teeth and Aux Hyd  
**\$11,500**

UT 3930  
**GEHL 52 HP MODEL 5620**  
1990 Model with 1872 Hours, Aux Hyd and 72" Bucket, Nice  
**\$13,500**

UT 3985  
**CASE 1835C DIESEL**  
**\$7,950**

UT 3952  
**CASE 1840 DIESEL**  
With 72" Ground Bucket, 1990 Model

UT 3829  
**GEHL 4610**  
44 HP Diesel

UT 3837  
**GEHL 4610 DIESEL**  
With Self Leveling Loader, Nice  
Ask For Rick  
**\$8,900**

UT 3814  
**GEHL SL4625 DIESEL**  
Kubota Power with Aux Hyd. and Foot Operated Loader Controls

UT 3928  
**CASE 50 HP 1840 DIESEL**  
2182 Hours, Aux Hyd, 63" Bucket  
**\$12,500**

UT 3923  
**CASE 1835B DIESEL**  
Come and See!  
**\$7,950**

UT 3918  
**CASE 1835B DIESEL**  
With 70" Bucket - Ask For Rick  
**\$8,950**

UT 3874  
**CASE 1845 UNILOADER**  
1995 Model, with 80" Bucket, Aux. Hyd., 1888 Hours  
**\$17,600**

UT 3886  
**GEHL 4510**  
Only 1600 Hours With 66" Bucket and Aux. Hyd  
**\$8,500**

UT 3879  
**CASE 1840 DIESEL**  
1991 Model, Aux. Hyd  
**\$10,800**

UT 3798  
**CASE 1840**  
1990 with Aux Hyd  
**\$12,900**

UT 3575  
**73" BUCKET**  
To Fit 1845-1845B - **\$400**

UT 3909  
**CASE 1845 DIESEL**  
1978 Model - **\$6,900**

Ask About Our Fast Credit At Competitive Rates Through Case Credit. Choose Your Machine Today! Ask For Rick

## We Have A Good Clean Selection Of Quality Pre-Owned Hay Tools And Forage Harvesting Equipment

UM 3543  
**NEW IDEA 9' 5 BAR GROUND DRIVE RAKE**  
Good Condition  
**\$1,295**

UM 3636  
**NEW HOLLAND 326 BALER WITH THROWER**  
With Rebuilt Knottter, Hyd Bale Tension  
**ONLY \$5,980**

UM 3635  
**GEHL 1540 BLOWER**  
540 PTO with Water Attachment  
**\$1,375**

UM 3651  
**456 NEW HOLLAND 3 PT. 9' DISC MOWER**  
With Tarp Protector Used Very Little  
**\$3,995**

UM 3720  
**JOHN DEERE 3960 FORAGE HARVESTER**  
With Hyd Spout & Deflector, 1000 PTO, 6 Foot Hay Pickup and 2 Row 30" Corn Head  
**\$6,000**

UM 3525  
**JOHN DEERE 716 TANDEM AXLE FORAGE BOX**  
3 Beater & Roof, 12 Ton Tandem  
**\$4,750**

UM 3620  
**HORST 14 TON TANDEM RUNNING GEAR**  
With 12 5Lx15 Tires  
**\$1,750**

UM 3330  
**KELLEY 6 FOOT 3 PT. ROTARY MOWER**  
Was \$425  
now **\$385**

UM 3618  
**DION TANDEM AXLE FORAGE BOX**  
12 Ton Tandem Gear  
**\$1,475**

**Just Traded Several Used Gehl 970 Forage Boxes**



UM 3690  
**IH 600 FORAGE BLOWER**  
**\$1,650**

UM 3749  
**ZIMMERMAN 36 FOOT BALE ELEVATOR**  
Good Cond  
**\$1,900**

UM 3762  
**BADGER BLOWER**  
540 PTO Blower, Good Paddles, Good Condition  
**\$500**

UM 3761  
**DANCO STATIONARY CONVEYER BOX**  
**\$2,500**

UM 3514  
**JOHN DEERE 336 BALER**  
Was \$4,250  
**\$3,450**

# BINKLEY & HURST BROS., INC.

133 Rothsville Station Rd.  
P.O. Box 0395, Lititz, PA 17543-0395  
Located 1/2 Mile North of Rothsville

(717) 626-4705

1-800-414-4705  
Fax 717-626-0996