

Search Begins For York Dairy Princess

YORK (York Co.) - Once again, the Pennsylvania dairy industry is seeking candidates to serve as County Dairy Princesses in their local area throughout the State. All single young women from a dairy background or with an interest in the dairy industry should consider devoting a year of their spare time helping to further the interests of that industry in their home county. York Dairy Princesses will be selected on June 20, at the York County 4-H Center, Bair.

The winner will serve the dairy industry of York for one year beginning on July 1, 1998. She will make appearances at schools, malls, and grocery stores and have the opportunity to speak to civic clubs, senior cit-

izens groups, farm and non-farm audiences. In addition, she will represent the dairy industry in parades and at fairs and will represent York County at the Pennsylvania Dairy Princess Pageant in Harrisburg in September.

The winner of the York County pageant will attend three days of training at Lycoming College, Williamsport. Non-material benefits include tremendous personal growth, development of self confidence and speaking ability, the opportunity to travel and meet new friends.

Any single woman between 16-24 years of age, never married, whose parents or guardians are engaged in dairy

farming or are employed in a dairy related industry is eligible to compete for the title. A young woman is also eligible if she, herself, is employed as above or is the owner of at least two animals of the six major dairy

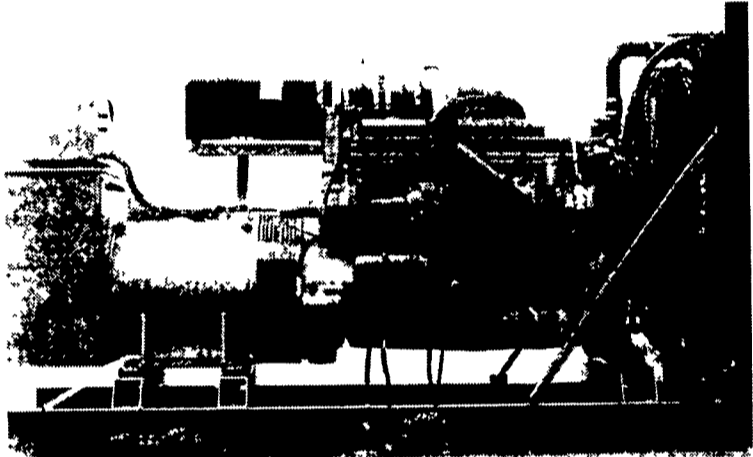
breeds in a bona fide 4-H or FFA project prior to May 1, 1998. Anyone interested in entering the York County Dairy Princess contest should contact Gail Thoman at 1886 Dunkard Valley Road, Dallastown, PA 17313 or

phone (717)428-1832 by April 30.

We also need girls to vie for the follow titles (age as of July 1, 1998): Little Miss Dairy (ages 4-6), Dairy Miss (ages 7-12) and Dairy Maid (ages 13-15).

got milk?™

GENERATORS



MARTIN ELECTRIC PLANTS • Manufacturer of:
DIESEL, LP GAS, NATURAL GAS, PTO
Automatic & Manual Start Systems
USED UNITS ALSO AVAILABLE

Call Us For All Your Generator Needs!

MARTIN ELECTRIC PLANTS

280 Pleasant Valley Rd., Ephrata, PA 17522-8620
800-713-7968

Tel: 717-733-7968 Fax: 717-733-1981



Water Quality
an IMPORTANT
Ingredient In
Livestock Management

It's a fact! Contaminated water can have a costly effect on your livestock and poultry performance. Our years of experience plus hundreds of farm related treatment systems has proven the validity and practicality of correcting contaminated water.

Martin
WATER CONDITIONING
Your Water Treatment Center

Call us today for treatment of:
Nitrates • Bacteria • Iron • Sulfides
pH - Acidity/Alkalinity

740 E. Lincoln Ave.
Myerstown, PA 17067
Ph: (717) 866-7555
800-887-7555

548 New Holland Ave.
Lancaster, PA 17602
Ph: (717) 393-3612
800-224-3612

308 W. Penn Ave.
Cleona, PA 17042
Ph. (717) 273-7555

RD #3 Box 109G
Stoytown, PA 15563
Ph. (814) 893-5081
800-893-5081

309 W. 4th St.
Quarryville, PA 17566
Ph. (717) 786-7373



Grand Opening

Saturday, May 2 at 8:00 a.m.

GP FASTENER

AND INDUSTRIAL SUPPLY

factory outlet store

Grade 5

- Nuts & Bolts
- Screws • Washers

99¢/lb.*

Pound for pound, GP Fasteners are a great buy! At our new outlet store, you can buy Grade 5 nuts and bolts, washers and screws by the pound! Mix n' match for just 99¢/lb.!*

EVERY SATURDAY *FREE Coffee and Donuts!*

Buy factory-direct. Save 30%—60%!

- Hex bolts
- Carriage bolts
- Lag screws
- Plow bolts
- Ideal hose clamps
- Grease fittings
- Triumph drill bits
- Taps & dies
- Hitch pins
- Chains
- Cable
- Turnbuckles

Custom parts are manufactured by our in-house production facility. Call us with your special requests.

* 25 lb. minimum purchase.

Store Hours:

Monday-Friday 8:00 am - 4:00 pm
Saturday 8:00 am - 12 noon

1450 Main Street ▲ Shoemakersville, PA 19555
(610) 562-3029

REGISTER TO WIN!
100 lbs. Nuts & Bolts

Winner to be announced May 11, 1998
No purchase necessary

ENTRY FORM

Name _____

Address _____

Phone _____

Deposit in store entry box. Mailed in entry forms not accepted.

